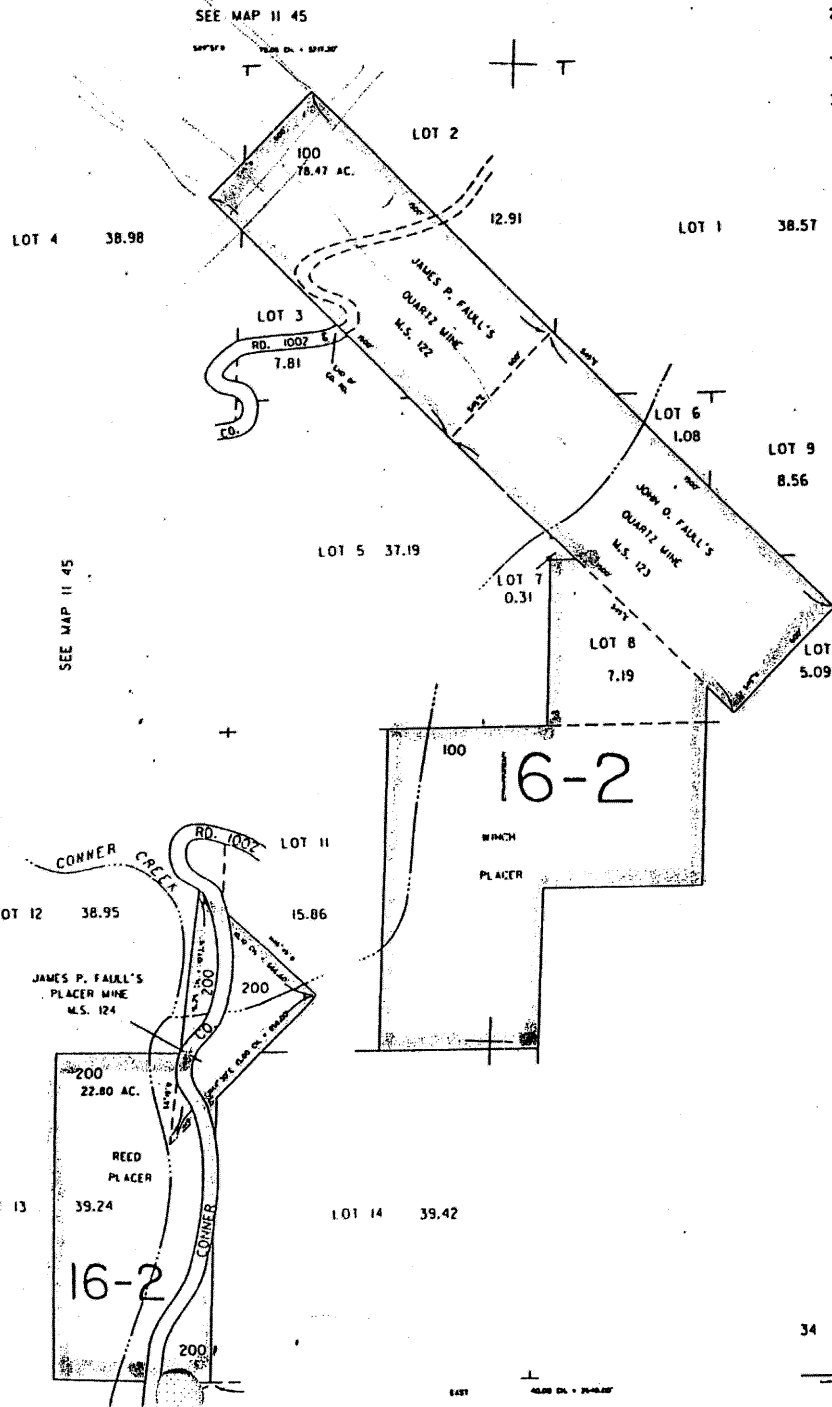
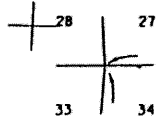
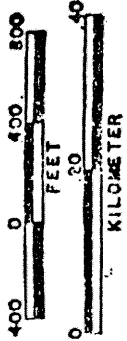


THIS MAP WAS PREPARED FOR  
ASSESSMENT PURPOSE ONLY

SECTION 34 T.11S. R.45E. W.M.  
BAKER COUNTY

1" = 400'

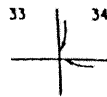
SCALE 1:9600.



WENCH  
M.S. 123

SEE MAP 11 45

RECEIVED  
JUN 4 1992  
DEPT. of REVENUE STATE OF OREGON  
ASSESSMENT & APPRAISAL DIV.



WENCH  
M.S. 124

WENCH  
M.S. 123