

DIAGRAM
SHOWING

The Quartz Claims known as the **KEY STONE GROUP**,
located on Sections 20 and 21 in Township 9 South
Range 41 East W.M. in Baker County Oregon.
Also showing the location and extent of the improvements
on each claim.

Surveyed and platted Sept. 16 to 20th 1913.
by C.M. Foster Surveyor.

SCALE 250 FT. = ONE INCH.

REFERENCES.

EMPIRE CLAIM.

- N^o 1. a Shaft 6'x10' and 40' deep; original depth unknown.
- N^o 2. an open cut 15' long 4'x5'.
- N^o 3. an open cut 37' long 2½'x3'.
- N^o 4. an open cut 52' long 3'x4'.
- N^o 5. an open cut 12' long 3'x3'.
- N^o 6. an open cut 30' long 3'x3'.
- N^o 7. an open cut 17' long 4'x4'.
- N^o 8. Prospect hole 4'x6' and 7' deep.
- N^o 9. a Tunnel 156' long 4'x6'.

MAY FLOWER CLAIM.

- N^o 1. a Prospect shaft.
- N^o 2. Discovery cut 37' long 5'x5'.

AMADORE CLAIM.

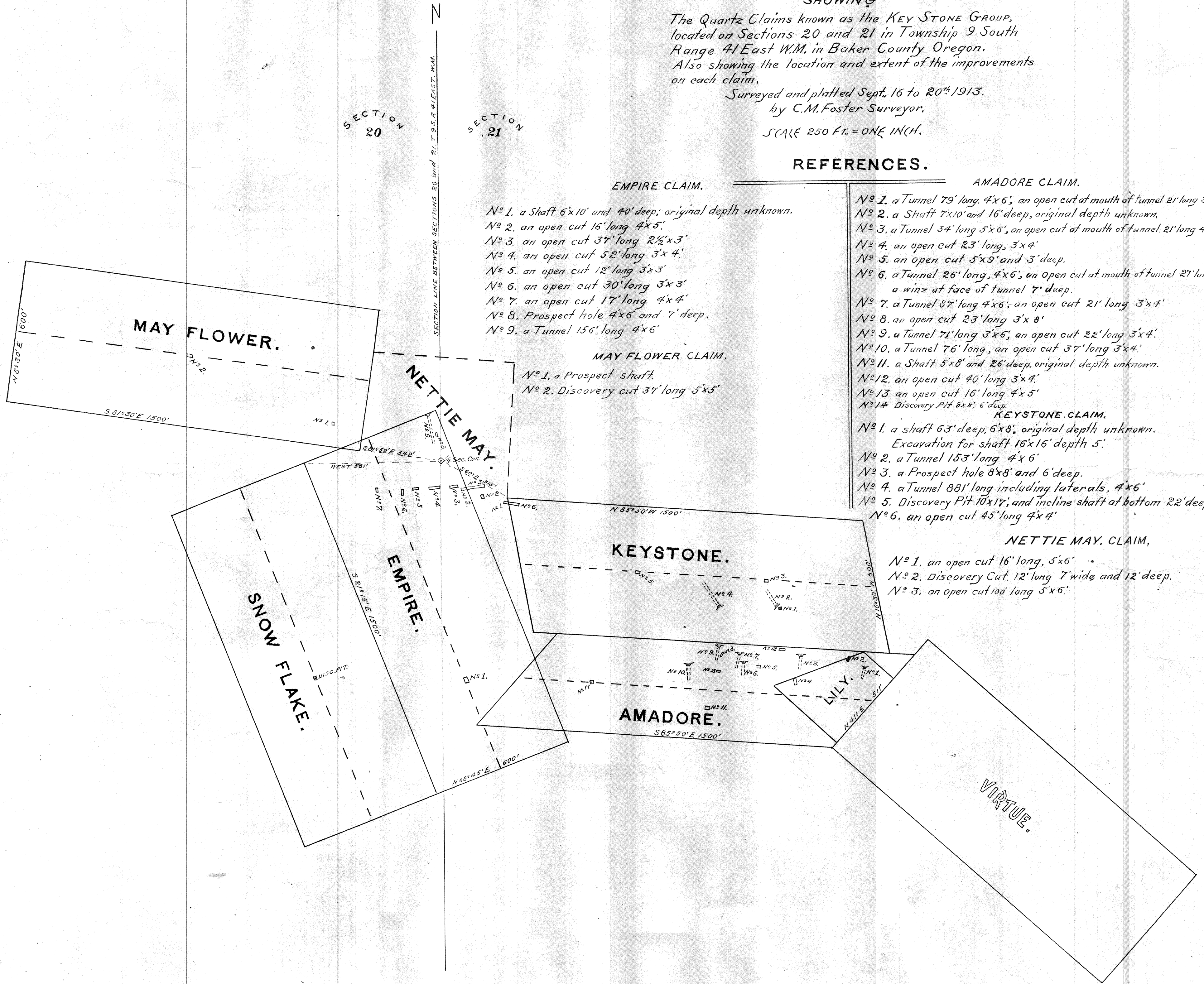
- N^o 1. a Tunnel 79' long, 4'x6'; an open cut at mouth of tunnel 21' long 3'x4'.
- N^o 2. a Shaft 7'x10' and 16' deep, original depth unknown.
- N^o 3. a Tunnel 34' long 5'x6', an open cut at mouth of tunnel 21' long 4'x4'.
- N^o 4. an open cut 23' long, 3'x4'.
- N^o 5. an open cut 5'x9' and 3' deep.
- N^o 6. a Tunnel 26' long, 4'x6'; an open cut at mouth of tunnel 27' long 4'x6' a winz at face of tunnel 7' deep.
- N^o 7. a Tunnel 87' long 4'x6'; an open cut 21' long 3'x4'.
- N^o 8. an open cut 23' long 3'x8'.
- N^o 9. a Tunnel 71' long 3'x6'; an open cut 22' long 3'x4'.
- N^o 10. a Tunnel 76' long, an open cut 37' long 3'x4'.
- N^o 11. a Shaft 5'x8' and 26' deep, original depth unknown.
- N^o 12. an open cut 40' long 3'x4'.
- N^o 13. an open cut 16' long 4'x5'.
- N^o 14. Discovery Pit 8'x8', 6' deep.

KEYSTONE CLAIM.

- N^o 1. a shaft 63' deep, 6'x8', original depth unknown.
Excavation for shaft 16'x16' depth 5'.
- N^o 2. a Tunnel 153' long 4'x6'.
- N^o 3. a Prospect hole 8'x8' and 6' deep.
- N^o 4. a Tunnel 881' long including laterals, 4'x6'.
- N^o 5. Discovery Pit 10'x17', and incline shaft at bottom 22' deep 5'x8'.
- N^o 6. an open cut 45' long 4'x4'.

NETTIE MAY CLAIM.

- N^o 1. an open cut 16' long, 5'x6'.
- N^o 2. Discovery Cut, 12' long 7' wide and 12' deep.
- N^o 3. an open cut 100' long 5'x6'.



SECTION
20

SECTION
21

SECTION LINE BETWEEN SECTIONS 20 and 21 T. 9 S. R. 41 E. W.M.