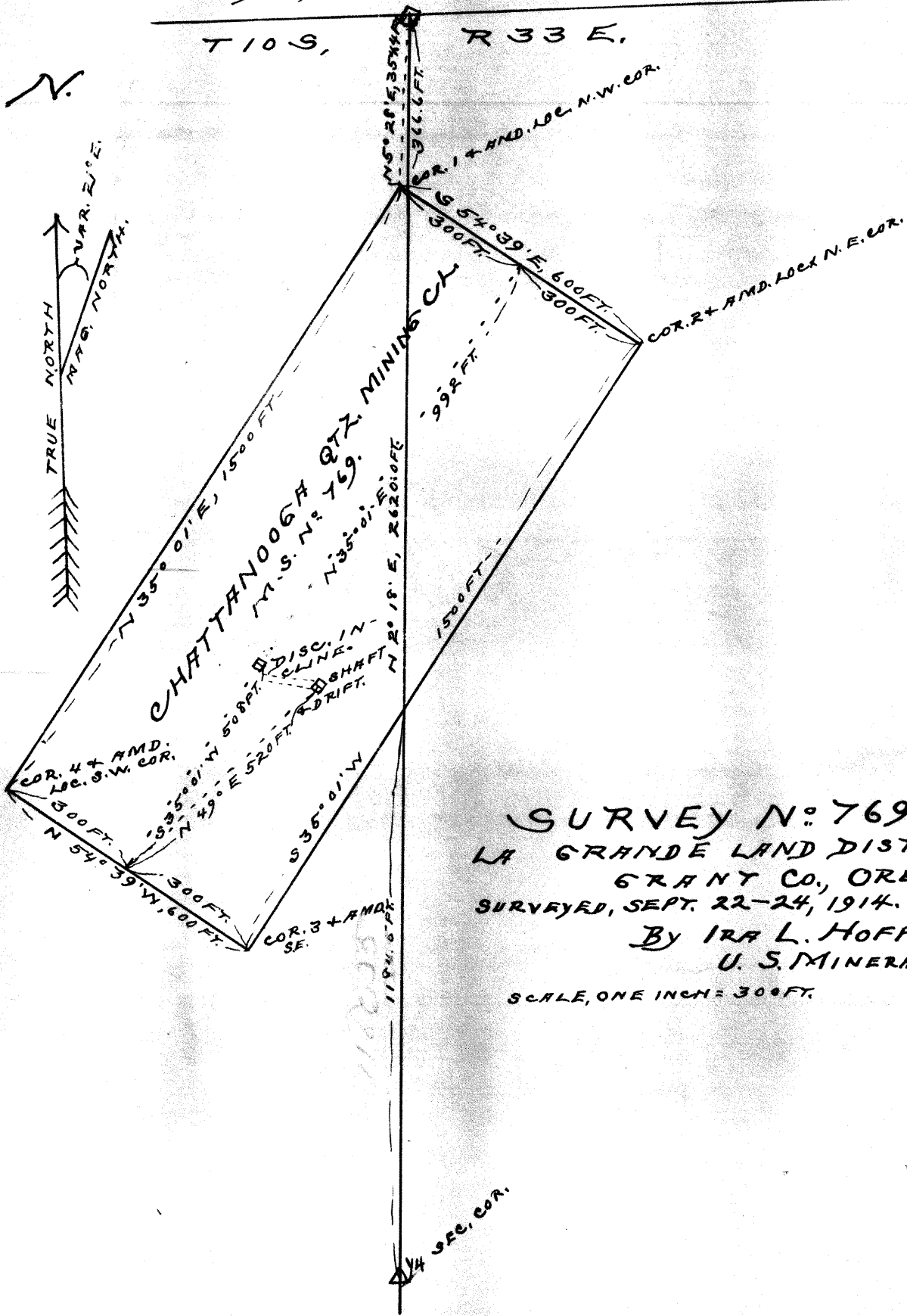
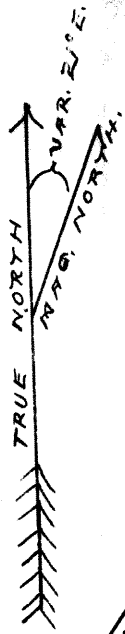


T 9 S, R 33 E, W. M., ORE.

T 10 S, R 33 E.

N.



SURVEY N: 769.  
 LA GRANDE LAND DISTRICT,  
 GRANT CO., ORE,  
 SURVEYED, SEPT. 22-24, 1914.  
 BY IRA L. HOFFMAN,  
 U. S. MINERAL SURVEYOR.

SCALE, ONE INCH = 300 FT.