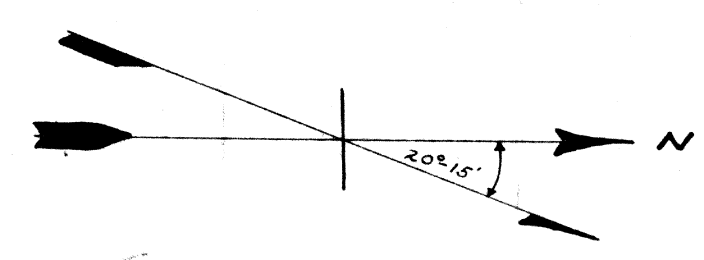
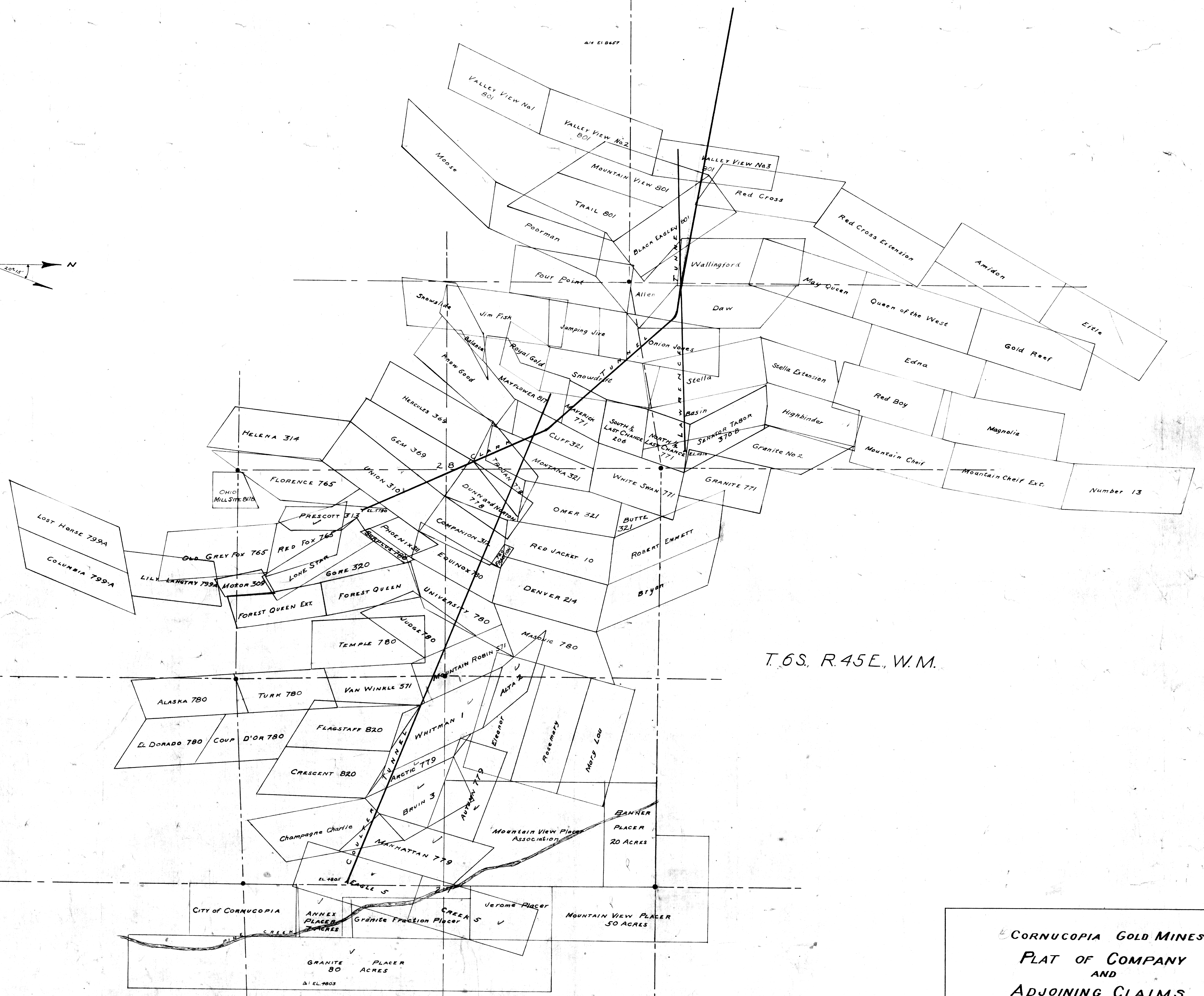


12000E
14000
16000
18000
20000
22000
24000
26000E
3000S
1000 S
1000 N
3000
5000
7000
9000
11000
13000
17000 N



PORTLAND No 2
784
PORTLAND No 1
784



T. 6S. R. 45E. W.M.

**CORNUCOPIA GOLD MINES
PLAT OF COMPANY
AND
ADJOINING CLAIMS**
NOVEMBER 1941 SCALE: 1"=600' R. Dunn ENGR.
NOTE:
All patented claims labeled with capital letters and
unpatented with lower case letters.
Where possible corners have been tied to triangulation control.
Remaining claims located from patent plats and other
available records.