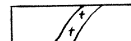


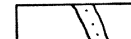
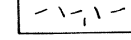



GENERALIZED GEOLOGIC CROSS SECTION

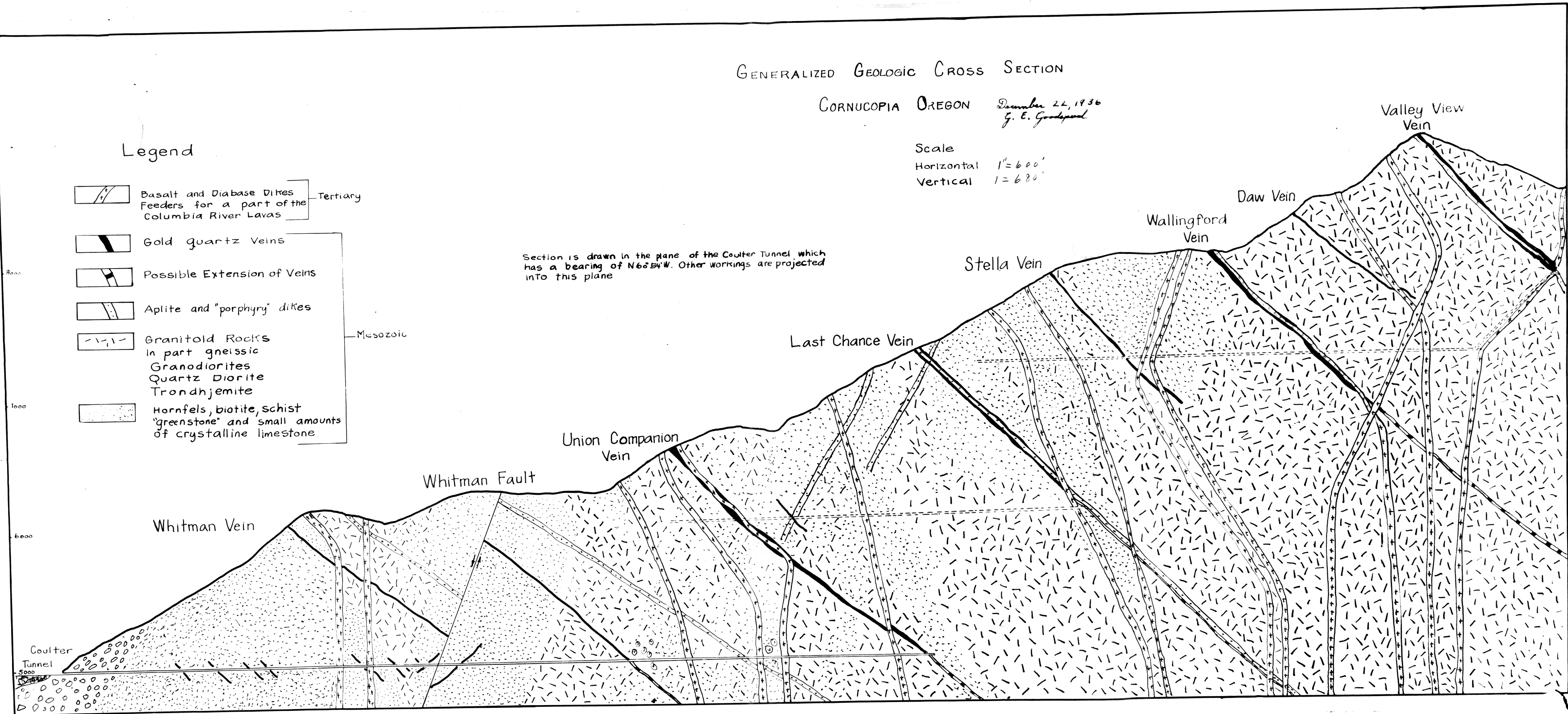
CORNUCOPIA OREGON December 22, 1936  
G. E. Goodspeed

Scale  
Horizontal 1" = 600'  
Vertical 1" = 600'

Legend

-  Basalt and Diabase Dikes  
Feeders for a part of the  
Columbia River Lavas — Tertiary
-  Gold quartz Veins
-  Possible Extension of Veins
-  Aplite and "porphyry" dikes
-  Granitoid Rocks — Mesozoic  
In part gneissic  
Granodiorites  
Quartz Diorite  
Trondhjemite
-  Hornfels, biotite, schist  
"greenstone" and small amounts  
of crystalline limestone

Section is drawn in the plane of the Coulter Tunnel, which has a bearing of N68°E-W. Other workings are projected into this plane.



Cornucopia - Geologic Cross Section

41-1-218