

**PLAN AND VERTICAL SECTION
MAXWELL-HIGHLAND AND BAISLEY ELKHORN MINE**

TOWNSHIP 8 SOUTH RANGE 37⁺ 38 EAST

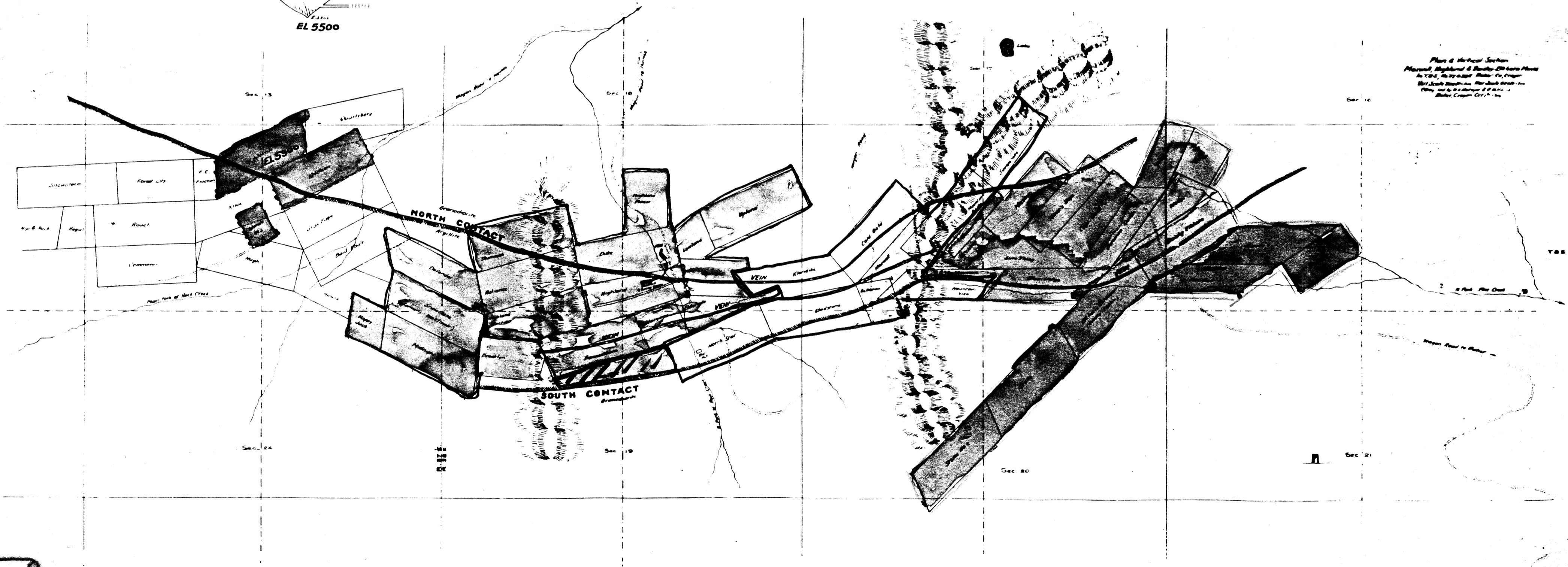
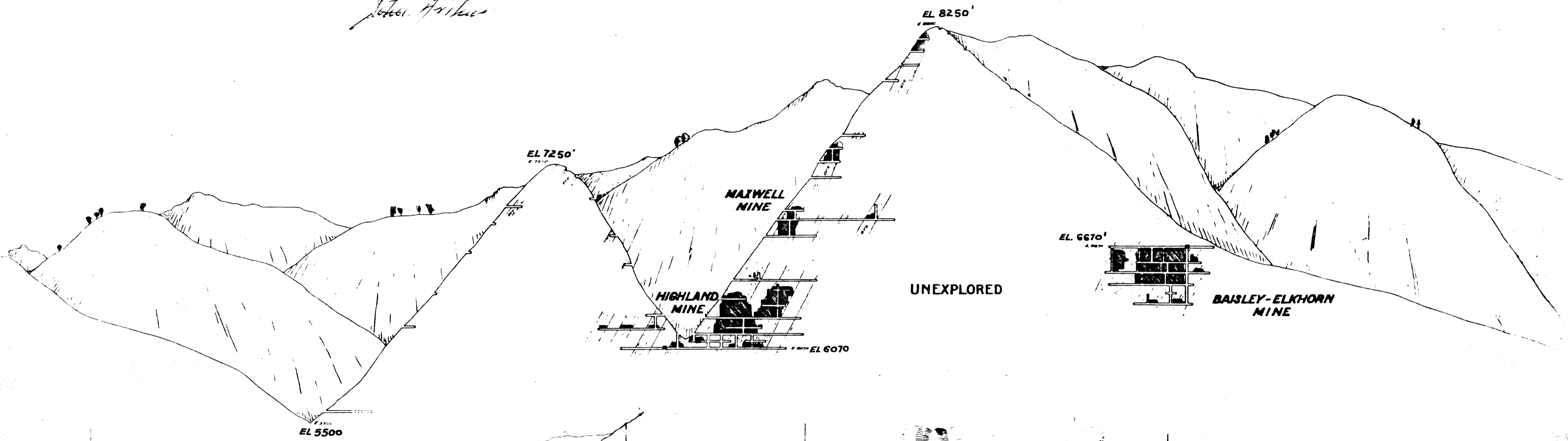
BAKER, OREGON

By G.E. METEGUR + Assistants --- Oct 1-1916

Vertical Scale -- 600 ft = 1"

ADDITIONS + COLOR By JOHN ARTHUR -- FEB 1954

John Arthur



*Plan of Vertical Section
Maxwell-Highland & Baisley-Elkhorn Mines
As Shown on 22' x 36' Plan of Baker, Oregon
By G.E. Metegur + Assistants, Oct 1-1916
Plan by G.E. Metegur + Assistants, Oct 1-1916
Additions + Color by John Arthur, Feb 1954*

MAXWELL MINE
HIGHLAND MINE
BAISLEY ELKHORN MINE

