

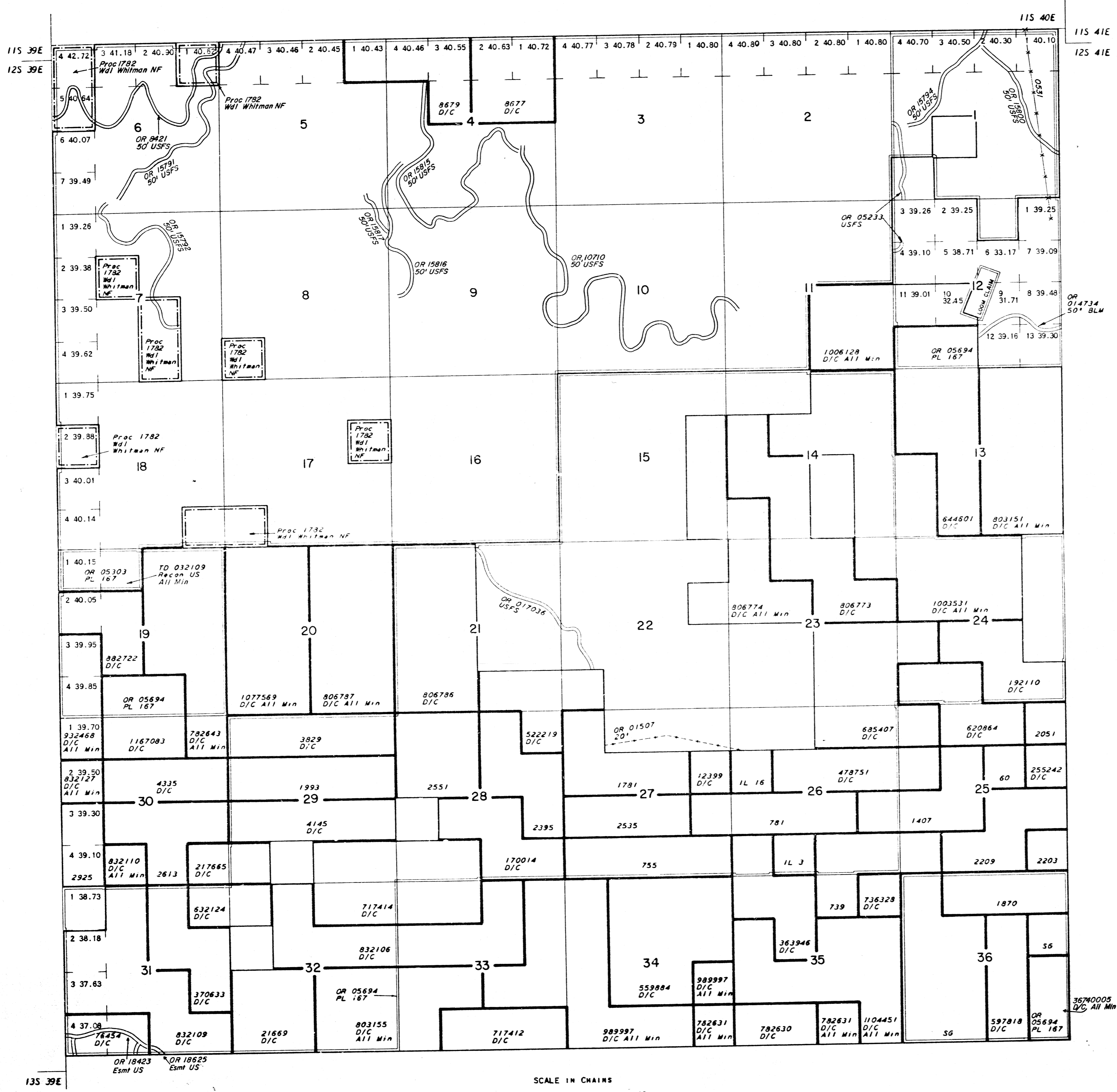
# TOWNSHIP 12 SOUTH RANGE 40 EAST OF THE WILLAMETTE MERIDIAN, OREGON

BAKER COUNTY  
BAKER

STATUS OF PUBLIC DOMAIN  
LAND AND MINERAL TITLES

## MT PLAT

INDEX TO SEGREGATED TRACTS				
RESURVEY	ORIGINAL SURVEY			
TRACT NO	T	R	SEC	SUBDIVISION



FOR ORDERS EFFECTING DISPOSAL OR USE OF UNIDENTIFIED LANDS WITHDRAWN FOR CLASSIFICATION, MINERALS, WATER AND/OR OTHER PUBLIC PURPOSES, REFER TO INDEX OF MISCELLANEOUS DOCUMENTS.

- TD 032109 WD to US  
Secs 5,6,7,8,17 excluding 22 01 A Hwy R/W
- OR 05694 Det PL 167 (Act of Cong 7/23/1955)  
completed 1/22/1964, all PD surface Mgmt by BLM
- OR 05303 Det PL 167 (Act of Cong 7/23/1955)  
completed 2/10/1964, all NF surface Mgmt by USFS  
Sec 7; S<sup>1</sup> Sec 8; excluding Dooley Mtn Perlite Group (3 claims)

THIS PLAT IS THE BUREAU'S RECORD OF TITLE AND SHOULD BE USED ONLY AS A GRAPHIC DISPLAY OF TOWNSHIP SURVEY DATA. RECORDS HEREON DO NOT REFLECT TITLE CHANGES WHICH MAY HAVE BEEN EFFECTED BY LATERAL MOVEMENTS OF RIVERS OR OTHER BODIES OF WATER. REFER TO THE CADASTRAL SURVEY FOR OFFICIAL SURVEY INFORMATION.

CURRENT TO	BY
18 AUG 1982	
6 OCT 1983	W. J. S.
6 OCT 1983	W. J. S.
	R. 40. E.

