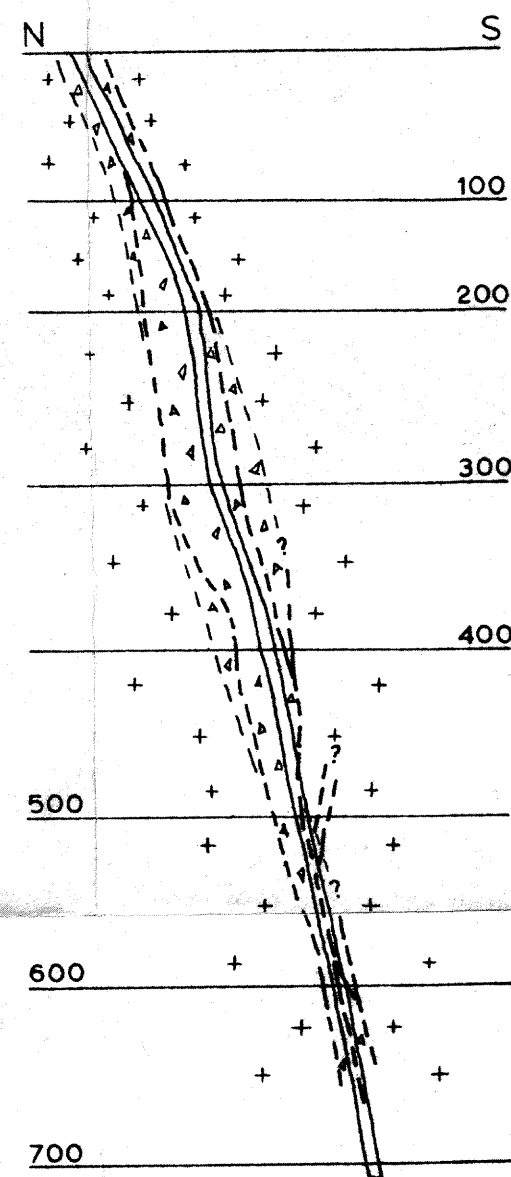
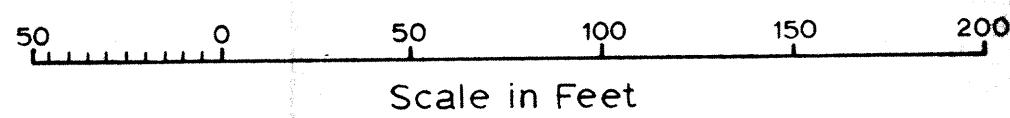
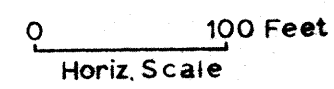


VERTICAL SECTION, line A-A' of Fig. 13,
with limited projection to plane of section
(G. L. Ojala, 1963)



SECTION of SHAFT LOOKING EAST
(Libbey & Corcoran, 1962; geology by G. L.
Ojala, 1963)



EXPLANATION

- | | |
|----------|-------------------|
| | |
| Andesite | Gouge, shear zone |
| | |
| Breccia | Ore |

Contact, dashed where
inferred or projected

Fault, dashed where inferred or
projected; "?" indicates high
degree of uncertainty of position

Ore vein or vein with
abundant sulfides, dashed
where inferred or projected

Stringers or veinlets of ore,
or with abundant sulfides

Quartz vein, dashed where
inferred or projected

Shaft

300
Drift, with level designation