

Arizona Mining Journal
- August 16, 1941.

A 60-ton car of ore was shipped from the **Oregon Argonaut** gold mine the latter part of June, and a second car will go soon, according to Bascom Parker, Jr., operator, Baker, Oregon. Regular shipments are planned. The mine is in the Bourne district of Baker County seven miles north of Sumpter, Oregon.

Crocker Creek Area
Baker Co.

Bascom Parker and Bascom Parker, Jr., Baker, Oregon, and associates of Niles, Michigan, have purchased the **Argonaut** group of 11 claims in the Bourne district of Baker County near Sumpter. They are actively engaged in the development of several veins that are producing fine gold values.

The Mining Journal Sept. 30 1937

An assay office is under construction at the Argonaut group of 11 claims in the Bourne district of Baker County, Oregon, near Sumpter. The property is being operated by Bascom Parker and Bascom Parker, Jr., of Baker, Oregon, and associates of Niles, Michigan. A survey and map of the mine was recently completed by Philo Anderson of Baker. Mine development is reported to be progressing satisfactorily.

Argonaut Mine
Oregon Journal, Sept. 21st, 1937

Rich Ore Found At Argonaut Mine

Baker, Sept. 21.-(P)-What is believed to be one of the richest gold ore strikes made in Oregon during 1937 was reported Monday by operators of the Argonaut mine, 40 miles west of here.

Tests of the ore show it to carry values ranging from \$100 to \$400 a ton. The ore will be shipped in a crude state to a smelter. Bascom Parker, Bascom Parker Jr. and F. N. Bonine of Niles, Mich., are owners of the mine, one of the new properties in Eastern Oregon.

Argonaut Group
Mining Jour.(Phoenix) v. 21, no. 6, p. 32, Aug. 15, 1937

"Bascom Parker and Bascom Parker, Jr., Baker, Oreg., and associates of Niles, Mich., have purchased the Argonaut group of 11 claims in the Bourne district of Baker Co. near Sumpter. They are actively engaged in the development of several veins that are producing fine gold values."

Mining Jour.(Phoenix) v. 21, # 9, p. 49, Sept. 30, 1937.

"An assay office is under construction at the Argonaut group of 11 claims in the Bourne dist. of Baker Co., Oreg., near Sumpter. The property is being operated by Bascom Parker and Bascom Parker, Jr., of

Check up to

Mining & Contract. Review Nov. 16 1937

Baker County

The Argonaut mine, near Sumpter, is trucking its first ore shipment to Baker.

Handwritten notes at top of page

Mining & Contract. Review Nov. 23 1937

Handwritten signature

With the shipment of its first car of gold ore to the Tacoma Smelter the Argonaut mine, in the Bourne section, north of Sumpter, has entered the shipping class and Bascom Parker, Jr., manager, expects to operate all winter. Development during the winter is expected to block out enough ore to justify the building of a 40-ton mill. The property is controlled by Bascom Parker, Sr. and F. N. Bonine, both of Niles, Michigan.—Eastern Oregon News.

The Mining Journal December 15 1937

Construction of a 40-ton mill next spring is under consideration by Bascom Parker and Bascom Parker, Jr., of Baker, Oregon, and associates of Niles, Michigan, who are operating the Argonaut group of 11 claims in the Bourne district of Baker County. The first carload shipment of gold ore was recently sent from the property to the Tacoma smelter. Operations are to be carried on throughout the winter.



Bascom Parker, Sr.

Mining & Contract. Review March 15 1938

Placer County

Bascom Parker, Sr., of the Argonaut Mine, Sumpter, has acquired the 100-ton flotation mill from the **Balm Creek Gold Mining Co.**, through **John Arthur**, receiver. The mill will be rebuilt at the Argonaut mine as soon as weather permits transporting it to its new site. **Bascom Parker, Jr.**, is manager.

Record-Courier

~~Eastern News~~ News, Baker

March 31, 1938

**SAYS SNOW DEEP NEAR
ARGONAUT MINE**

Bascom Parker Jr. is in town this week from the Argonaut mine of the Bourne district and reports that the 10 feet of snow there makes access and egress difficult. It requires about 11 hours to take a load of supplies the 11 miles from Sumpter to the mine with a four-horse team, he said. The manager expects to have about two carloads of high grade ore ready for shipment by the time the road is open to trucks and before work is commenced on erection of a mill.

The 100-ton flotation mill of the Balm Creek Gold Mining Company near Keating, Oregon, is reported to have been purchased by Bascom Parker of Baker, Oregon, and associates of Niles, Michigan, for the Argonaut mine in the Bourne district of Baker County. The plant is to be rebuilt at the Argonaut property as soon as weather permits. Purchase was made through John Arthur of Baker, receiver for the Balm Creek company.

NEW INTERESTS IN CONTROL OF THE ARGONAUT

Wilmot Associated With
Parkers in Mine Development
Near Bourne

MILL TO BE BUILT BY LATE SUMMER

New Camp to Be Built,
2000-Foot Working Adit
to Open Veins 300 Feet
Below Present Work.

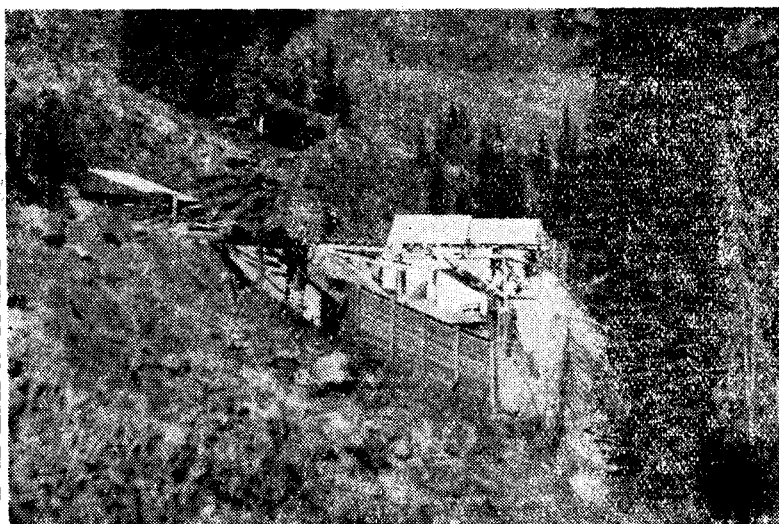
Control of the Argonaut mine in the Bourne district north of Sumpter passed this week from Bascom Parker, Sr., and Bascom Parker, Jr., to H. C. Wilmot and associates, according to announcement made by Mr. Wilmot.

In announcing taking over the Argonaut mine, Mr. Wilmot stated that he and associates have joined the Parkers in acquiring the interest of F. N. Bonine of Niles, Mich., in the property. They take over control and will continue development along the lines followed by the Parkers. Mr. Wilmot will be in active charge of the operation.

Negotiations for the deal have been underway for more than two months, during which Mr. Wilmot check-sampled the ore showings. As a result of the examinations contracts were entered into for carrying on operation of the mine. The general character of the formation is a black argillite country rock with intrusions of granite.

100-TON MILL TO BE BUILT

The elevation of the present tunnel is 7,500 feet with the apex of the mountain rising to over 8000 feet. It is the plan, Mr. Wilmot states, to establish a new camp at about 300 feet lower elevation, and from this point drive the main working adit a distance of 2000 feet to open the ore bodies at a greater depth. A site will be selected for a 100-ton mill near the portal of this adit.



Camp Buildings at Argonaut Mine

(Courtesy Oregon Mining Review)

The indicated ore bodies warrant building the mill at this time, Mr. Wilmot states, and this is included in the plans of work to be undertaken as soon as the weather permits at that elevation. The mill is expected to be completed for operation by late summer. Two of the most important jobs to be undertaken first will be improvement of the road and installing electric power. The transmission line of the Eastern Oregon Light and Power company passes about 2000 feet from the proposed new camp.

ORES DEEP SEATED

The values in the ore are found principally in an arsenopyrite indicating deep-seated ore. That the veins will go to depth is indicated by the favorable geological conditions. This calls to mind the statement of Waldemar Lindgren, noted geologist, made in his report on the "Blue Mountain Gold Fields of Eastern Oregon," applied to the Mother Lode of the Bourne district as being equally applicable. "I expect them (the veins and ore bodies) to go to the greatest depth yet attained by man," are his words.

The Argonaut mine is about three miles northerly from the

Columbia mine and about a mile northwest of the North Pole mine, both of which properties are on the Mother Lode of the Bourne district.

Tests of the ore are being made in California to determine the best flow sheet for the mill to be erected.

SIX KNOWN VEINS ON PROPERTY

There are six known veins outcropping on the surface of the Argonaut holdings. On one of these, known as the Tunnel vein, there is 900 feet of drift, with a drift of 500 feet off from the Tunnel vein on No. 1 vein. This work has opened two ore shoots with a total length of 700 feet. The grade of the ore is approximately \$20 per ton.

West of the No. 1 vein, and practically paralleling it are three other veins, cropping higher up the mountain, which sampled from surface cuts show equally as attractive ore as found in the croppings of No. 1 vein.

The Argonaut mine was acquired by the Parkers and F. N. Bonine in August, 1935, as a prospect, purchased from Aaron and Sam Proffet and W. W. Gibbs, all of Sumpter. The development to the present has been under direction of Bascom Parker, Jr., with John Arthur of Baker, as consulting engineer.

It is a new property with no production record, save three cars of ore shipped crude to the smelter at Tacoma. The ore which carried from one ounce to 1.87 ounces gold per ton was taken out in the course of development.

Argonaut Mine Changes Hands

New Development Work Planned At Eastern Oregon Property

BAKER, Jan. 28.—Control of the Argonaut mine in the Bourns district north of Sumpter passed recently from Bascom Parker and Bascom Parker Jr. to H. C. Wilmot and associates, according to announcement made by Wilmot. In announcing taking over the mine Wilmot said that he and associates had joined the Parkers in acquiring the interest of F. N. Bonine of Niles, Mich., in the property.

New Ore Bodies Sought At Greater Depths

They take over control and will continue development work along the lines followed by the Parkers. Wilmot will be in active charge of the operation.

Negotiations for the deal had been under way for more than two months, during which Wilmot checked-sampled the ore showing. As a result of the examination contracts were entered into for carrying on operations.

The elevation of the present tunnel is 7500 feet, with the apex of the mountain rising to 8000 feet. It is the plan, Wilmot said, to establish a new camp at about 300 feet lower elevation and from this point drive the main working adit a distance of 2000 feet to open the ore bodies at a greater depth. A site will be selected for a 10-ton mill near the portal of the adit.

The indicated ore bodies warrant building the mill at this time, Wilmot said, and this is included in the plans of work to be undertaken as soon as the weather permits at this location. The mill is expected to be completed for operation by late summer.

The Argonaut mine is about three miles northerly from the Columbia mine and about one mile northwest of the North Pole mine. There are six known veins outcropping on the surface of the Argonaut holdings.

*Crocker Wash
Baker*

Starting Operation at Argonaut Mine

The work of putting the Argonaut mine, 13 miles north of Sumpter into operation is to get under way at once. H. C. Wilmot was in Baker yesterday arranging to start the work.

The first work will be to improve and rebuild the road to the mine. A new caterpillar will be used on the job. When the road is open for hauling materials for new buildings and establishing the camp and other improvements to be made.

The 100-ton flotation mill at the Balm Creek mine east of Baker was purchased by Mr. Wilmot in December and has been dismantled, ready for hauling to the Argonaut for treating ores from the mine.

The Oregon Argonaut Gold, Inc., is the name under which the operating company has been formed. Mr. Wilmot and associates purchased a controlling interest in the Argonaut mine from Bascom Parker, Sr., and Bascom Parker, Jr., last December.

WORKING GETS UNDERWAY AT THE ARGONAUT

Road Has Been Built and Good Progress Is Being Made

NEW CAMP IS IN SHELTERED COVE

Work Is Pioneering in Preparations for Larger Operations When Mine Starts Mill

Good progress has been made with the work at the Argonaut mine, north of Sumpter. The road has been rebuilt and made over into a good mountain highway. A new camp has been established at a cove about a half mile below the old camp. The new camp is about 300 feet lower on the mountain than the former one and is in a location more protected from winter storms than before.

It is from this point that H. C. Wilmot, manager of the property is starting a new working adit through which ore will be brought to the mill which will be built. This tunnel will be about 1600 feet in length.

The past few months have been busy ones for Argonaut workers with all the pioneering to be done in preparing for the larger operations with production when the mill is erected.

The control of the Argonaut mine was taken over last winter by H. C. Wilmot and associates, from Bascom Parker, Sr., and Bascom Parker, Jr., who had developed the property sufficient to justify carrying it on to production. On taking charge of the mine Mr. Wilmot was faced with the necessity of building a new road, new camp buildings for accommodation of the larger crews of men to be employed under the expanded operation.

Gordon C. Smith, an engineer of Boise, Idaho, was engaged to survey the claims for patent and other work such as mapping the underground workings and surveying for the electric power line.

The 100-ton flotation mill at the Balm Creek mine was purchased by Mr. Wilmot and during the winter and spring it was torn down and prepared for trucking to the mine when the work is ready for it.

The Argonaut mine has been incorporated under the name of Oregon Argonaut mine, Inc. The address of the company is Baker, Oregon.

Eastern Oregon News July 28 1939

CROSSCUT AT THE ARGONAUT REACHES VEIN

Tunnel Cuts Vein About 25 Feet Below Old Workings

WORK TO CONTINUE DURING WINTER

New Camp Built and Preparations Made for Continuing Work During the Winter.

Early in the fall a crosscut was started at the Argonaut mine to cut the veins about 125 feet below the upper workings. The crosscut is about 600 feet in length and last Saturday broke into the vein at approximately the point the survey showed it to be.

All preparation has been made for carrying on work at the mine during the winter. The Argonaut Gold Inc., property is high on the mountains north of Sumpter at an elevation of about 7000 feet.

A new road has been built a distance of about four miles to the mine; new buildings built, a connection has been made with the Eastern Oregon Light and Power company power line which passes near the mine, supplies for the winter are being laid in and timbers and wood piled up to carry over the winter months.

H. C. Wilmot, manager of the property, is pushing the development with the purpose of being prepared by next spring for building a 100-ton flotation mill.

The Argonaut is a virgin mine the development of which will bring a new mine into production. Mr. Wilmot and associates acquired control of the property a year ago from Bascom Parker, Sr., and Bascom Parker, Jr., and since has been carrying out his plan for operating it.

BIG STRIKE OF GOLD MADE AT ARGONAUT MINE

Discovery - One of
Most Important
In Years

SOME OF ORE
ASSAYS \$300

5 important Veins
Are Uncovered
In Mine

By H. E. HENDRYX

Editor Oregon Mining Review

A gold strike which is developing into one of the most important discoveries made in eastern Oregon in recent years was made at the Oregon Argonaut Gold, Inc., property north of Sumpter the latter part of February. Since the ore was first encountered the drift has been extended on the ore shoot about 100 feet with high grade gold ore still showing in the face and the full length of the shoot yet to be determined.

From the first the ore shoot has shown a rich streak of ore on the hanging wall side from a foot in width to as much as five feet wide. Along side the rich streak there is milling ore consistently carrying values of more than \$20 in gold. At one point there is a width of eight feet sampling \$26 per ton, with two feet of \$200 ore, and three feet of \$85 ore in the rich streak on the hanging wall side. The latest samples at this writing taken from the face of the drift gave a return in the rich streak, which was 18 inches wide, of more than \$300 per ton.

The strike is on what is known as the East and West vein on which a drift was driven on the level above to cut No. 1 vein. Drifting is now underway on the new level toward the No. 1 vein, which on the level above made a better showing than was encountered on the East and West vein.

In addition to these two veins there are three other prominent veins showing commercial values and no doubt these when encountered on the deeper levels will make similar showings of high grade ore.

SCENE AT ARGONAUT MINE



Elevation of the Argonaut mine camp is about 7000 feet with elevations on the property reaching to more than 8000 feet. Winter at this altitude means snow and portion of the camp, under 6 to 10 feet of snow is shown in the picture.

The No. 5, or big vein, is considered by many who have visited the property to be the most important for tonnage, as on the surface the vein shows great length and width, with about the same showing of surface ore.

The present tunnel, on an intermediate level encountered the East and West vein 175 feet below the upper workings on the dip of the vein, or approximately 280 feet below the surface on the dip. When extended to encounter the other veins much greater depth will be attained. As, for instance, on the No. 5, or big vein, the level will have a depth of about 1000 feet.

In addition to this development now underway at the Argonaut, a lower tunnel was started last fall which will be driven about 3000 feet to reach the veins and will again add a vast tonnage to the property.

Control of the Argonaut mine was taken over by H. C. Wilmot and associates in December, 1938, from Bascom Parker, Sr., and Bascom Parker, Jr., and since that time they have carried on development operations. A company was formed under the title of Oregon Argonaut Gold, Inc., Baker, Oregon, under which name the operation is conducted.

The values are found principally in an arsenopyritic indicating a deep-seated ore. The prediction that the gains will go to great depth, as made by geologists on the basis of the favorable geological conditions, it seems now is being proven by developments at the mine. This brings to mind the statement made by the late Waldemar Lindgren, not-

ed geologist, in his report on the "Blue Mountain Gold Fields of Eastern Oregon," as applied to the mother lode of the Bourne district as being equally applicable to the Argonaut mine. "I expect them (the veins and ore bodies) to go to the greatest depth yet attained by man," are his words.

In the past year the company has spent several thousand dollars improving the road to the mine, which is about 13 miles from Sumpter. An electric power line has been connected with the lines of the Eastern Oregon Light and Power company, mining equipment installed and new camp buildings erected.

With the success of the new development the building of a mill will probably be on the program for the coming season and another producer will be added to the expanding mining industries of the state.

The Argonaut is a new property, not the re-opening of one of the old mines. For this reason many mining men look upon the development with more than usual interest, as they see in the making of a new mine a greater inducement for others to undertake the development of other promising prospects.

With the same reasoning the fortunate owners of the mine will be able to get the cream of the early operations as well as have a property that gives every promise of carrying on production for many years to come.