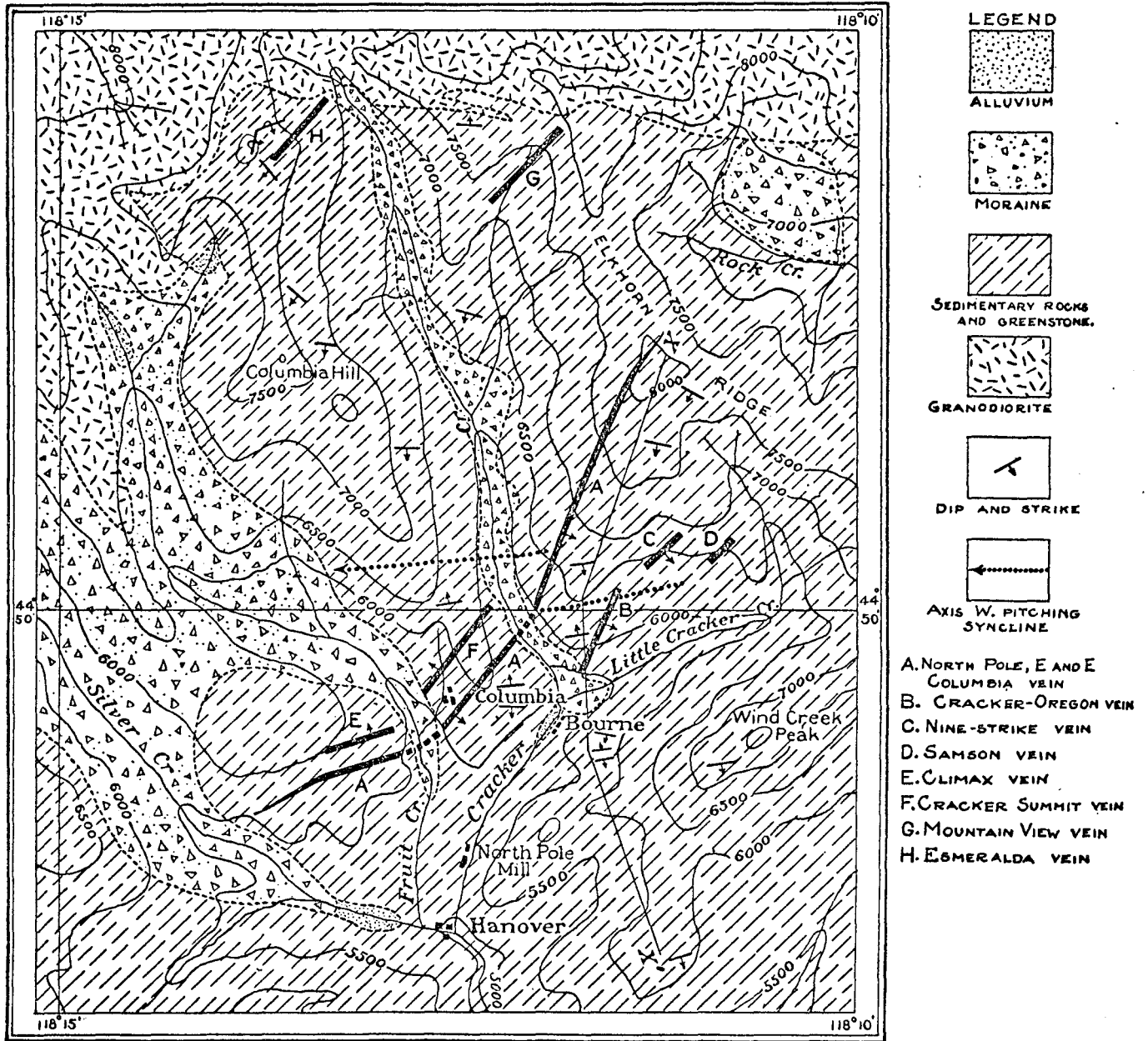


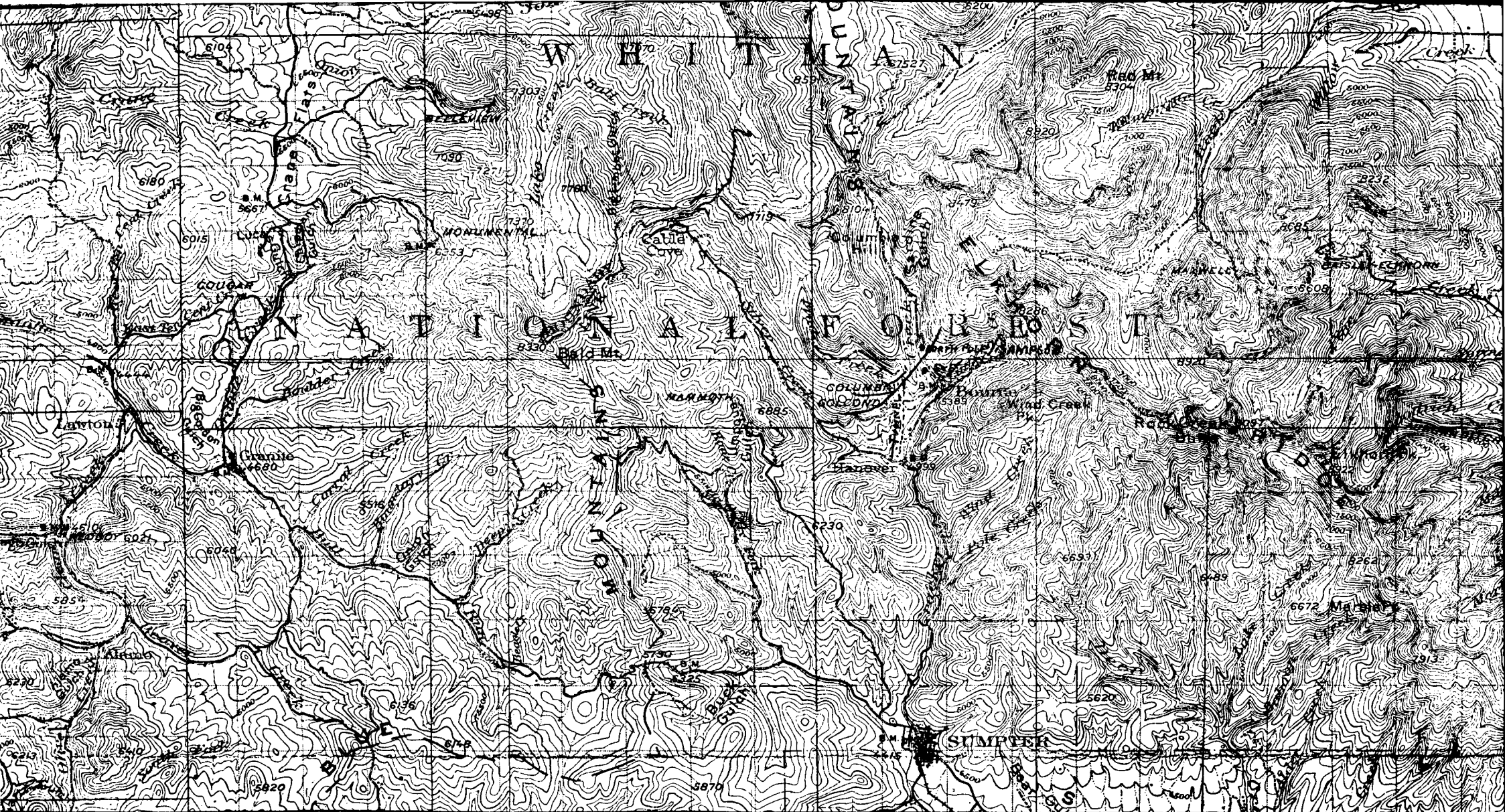
Copied From Bulletin 380

Department of the Interior—U. S. Geological Survey in 1908

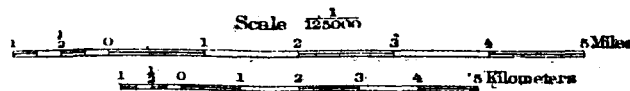
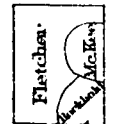
Contributions by J. T. PARDEE
of the United States Geological Survey



0 1 2 3 Miles
GEOLOGIC VEIN MAP OF PART OF CRACKER CREEK MINING DISTRICT, BAKER COUNTY, OREGON



R. 35 E. ENGRAVED JUNE 1901 BY U.S.G.S. R. 35½ E. 20' R. 36 E. (Ironsides Mountain) R. 37 E. 10' R. 38 E.
 J. Goode, Geographer in charge.
 Angulation by S.S. Gannett.
 Topography by L.C. Fletcher; R.H. Mc.Kee and J.E. Rockhold.
 Surveyed in 1899-1900



Contour interval 100 feet.
 Datum is mean sea level.

Edition of Nov. 1901, reprinted

Topographic Map of the Sumpter Quadrangle, at Bourne, Baker County, Oregon.

SUM