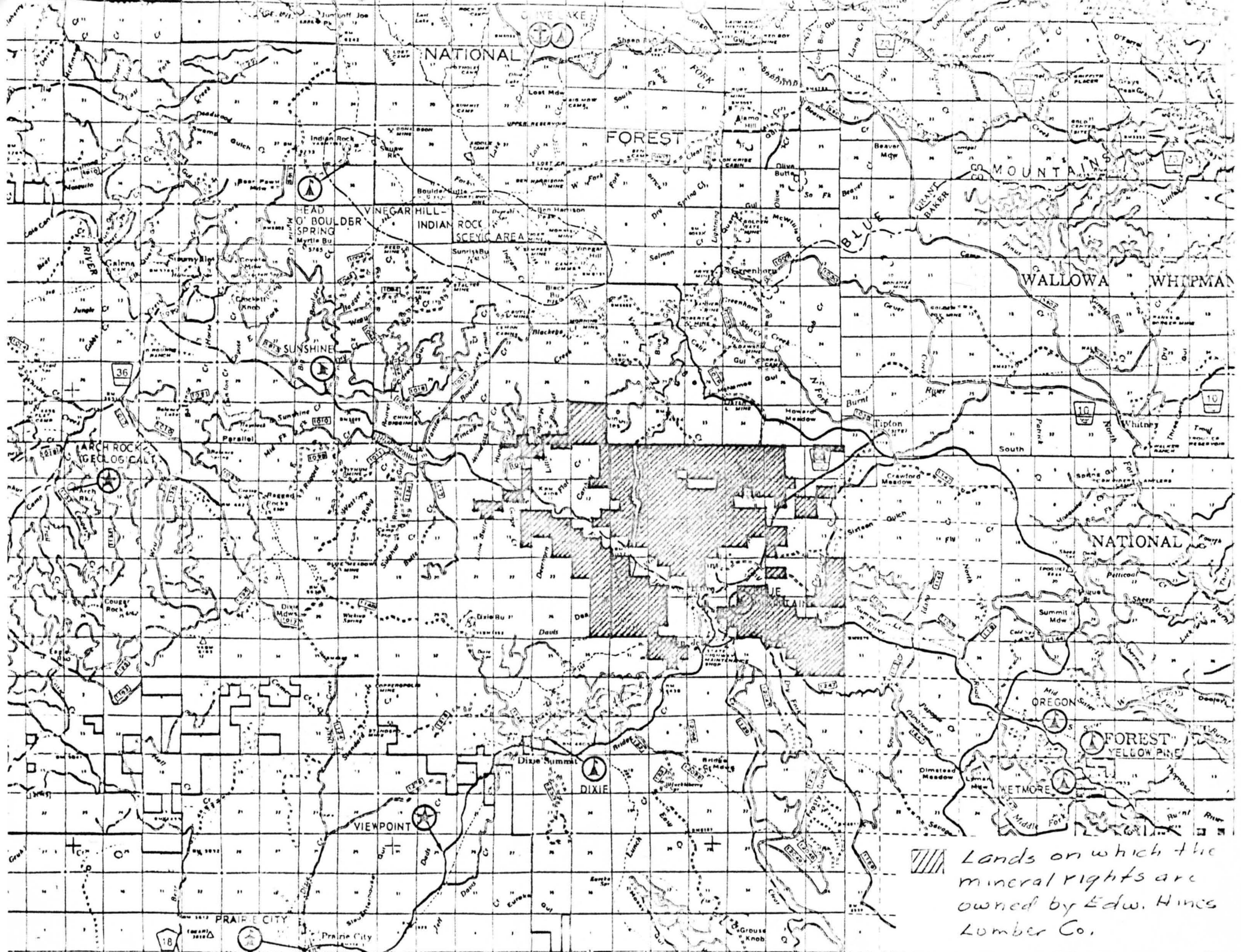


 Lands on which the mineral rights are owned by Edw. Hines




 Lands on which the mineral rights are owned by Edw. Hines Lumber Co.

34 E

R 35 E.
118°30'

N 35 1/2 E 22°30'

KEY TO RECREATION SYMBOLS

- CAMPGROUND
 - TRAILER SITES
 - PICNIC AREA
 - SHELTER
 - RESTROOMS
 - DRINKING WATER
 - CAMPFIRES
 - PETS ON LEASH
 - PARKING
 - LAUNCHING RAMP
 - SAILBOATING
 - ROWBOATING
 - CANOEING
 - SWIMMING
 - FISHING (LAKE)
 - FISHING RESERVOIR
 - FISHING (STREAM)
 - WINTER RECREATION AREA
 - INFORMATION
 - LODGE AND CABINS
 - RANGER STATIONS
 - FOREST SERVICE STATIONS
- | | |
|--------------|-------|
| MAP LOCATION | |
| T118 | R31 |
| T118 | R29E |
| T118 | R30E |
| T125 | R32E |
| T125 | R34E |
| T145 | R28E |
| T145 | R34E |
| T145 | R35E |
| T155 | R30E |
| T155 | R38E |
| T155 | R33E |
| T155 | R31VE |
| T160 | R35E |
| T165 | R32E |
| T165 | R33E |
| T165 | R32VE |
| T165 | R32E |
| T165 | R33VE |
| T165 | R31E |
| T118 | R34E |
| T165 | R33VE |
| T145 | R34E |
| T165 | R35E |
| T155 | R33E |
| T155 | R31E |
| T118 | R |
| T165 | R34E |
| T155 | R30F |

T95

95

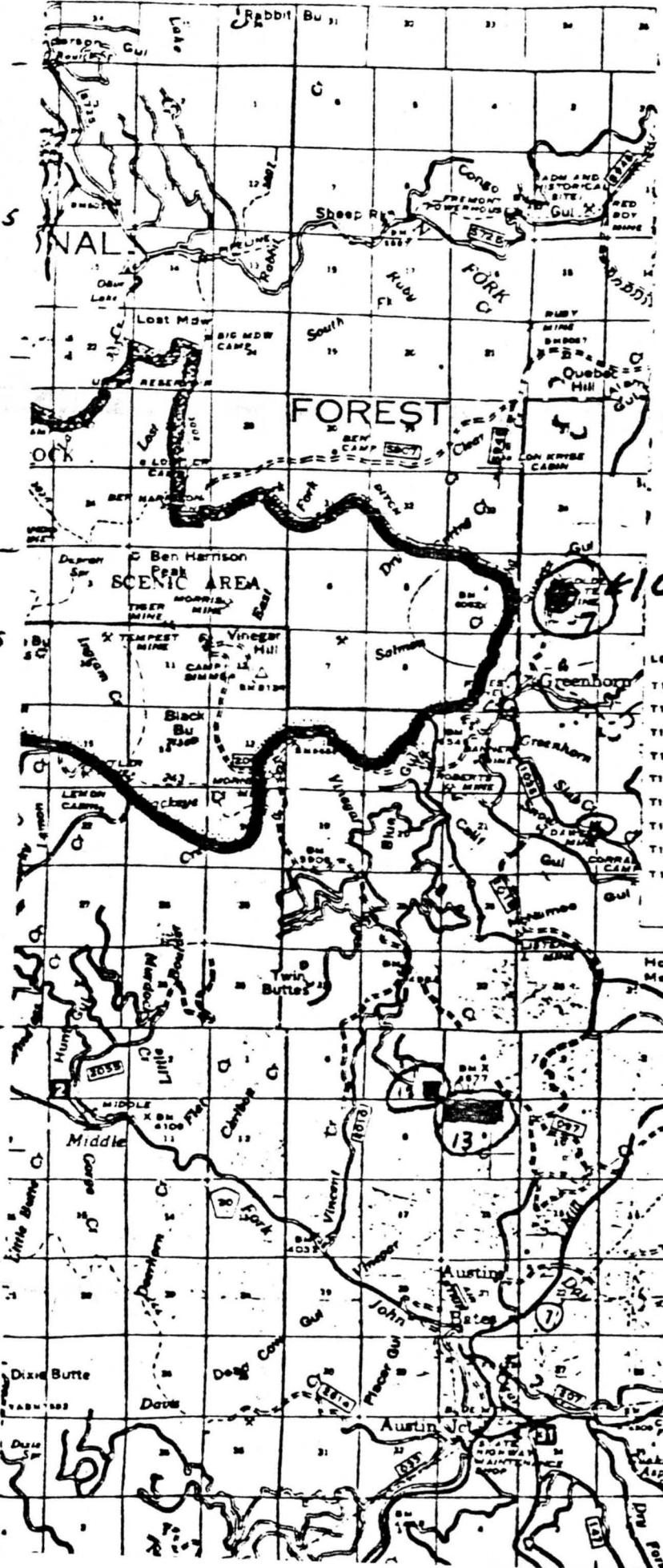
#107

T105

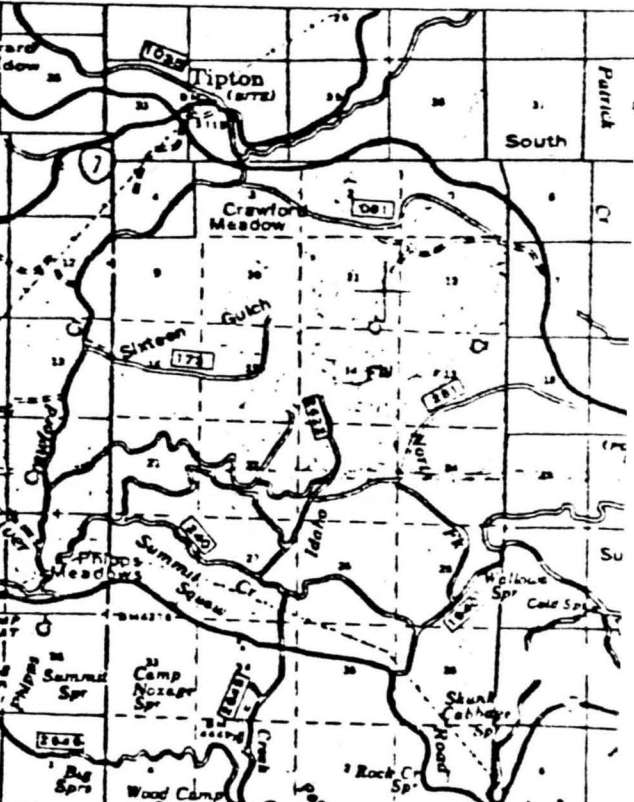
- MAP LOCATION
- T105 R31E
 - T105 R32E
 - T115 R35E
 - T115 R36E
 - T155 R32E
 - T165 R34E
 - T165 R32E
 - T165 R32E
 - T165 R32E
 - T165 R32E
 - T165 R32E
 - T165 R32E
 - T165 R32E
 - T165 R32E
 - T165 R32E

SUPPLEMENT HAS BEEN

Additional base revisions have been made in 1962



T115



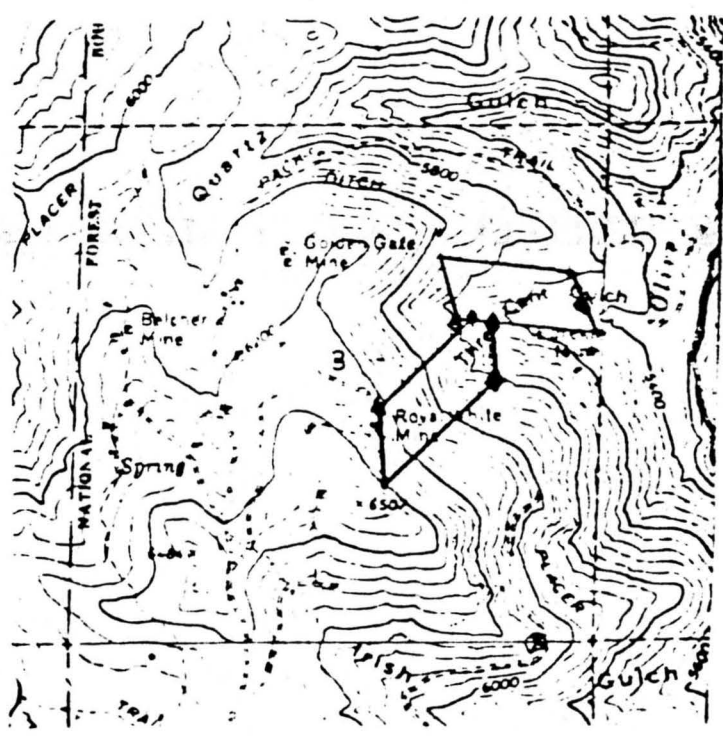
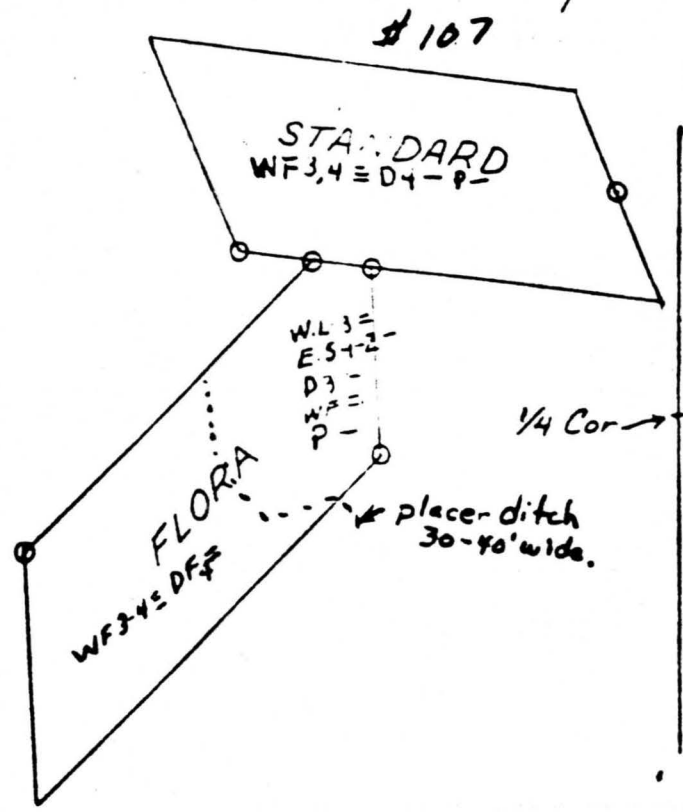
Legend

Type	Symbol	Type Name
D	○	Douglas fir
P	○	Ponderosa pine
W	○	western larch
WF	○	white fir
LP	○	Lodgepole pine
J	○	Juniper
RR	○	noncommercial-racky (Area within commercial forest zone too rocky, steep, or sterile to produce a merchantable stand)
A	○	Agricultural (cultivated or steep pasture)
S	○	Grass or Brush
R	○	Residual stand after partial cut

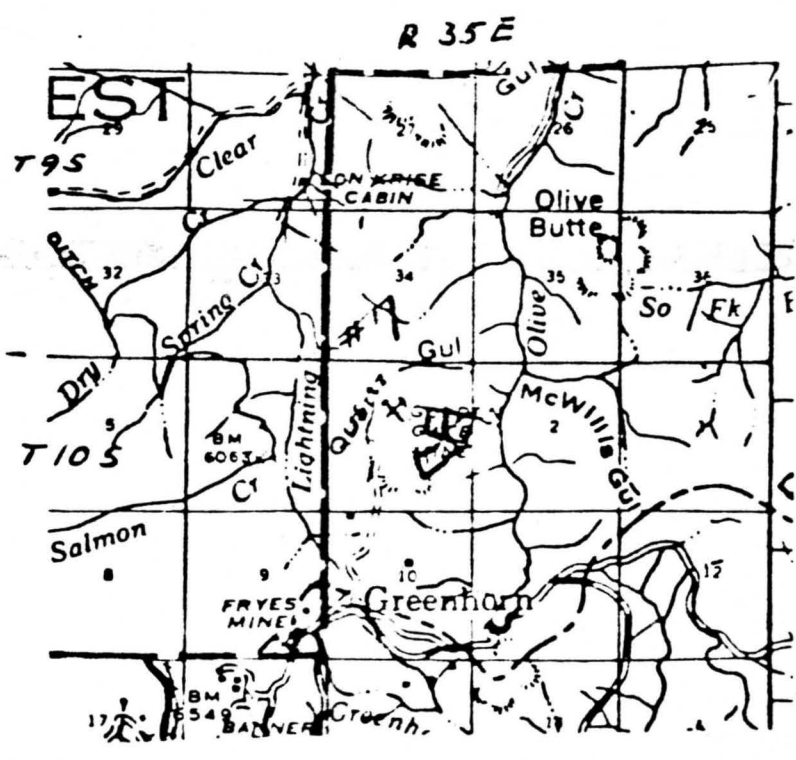
Symbol	Stand size Class	Description
1	Seedlings and saplings	0 to 5 inches d.b.h.
2	Pole timber	5 to 11 inches d.b.h.
3	Small saw timber	11 to 21 inches d.b.h. mainly young growth
4	Large saw timber	21 inches and larger d.b.h. mainly old growth (except for D which is chiefly so-called "red fir")

Symbol	Density	Description
-	fairly stocked	10 - 39 percent
-	moderately stocked	40 - 69 percent
-	well stocked	70 - 100 percent

Symbol	Description
○	Sight-board on Section line
○	Approx. Corner found
○	Good Corner found
○	Caps found - 1983 Survey



U. S. Quadrangle Map GREENHORN



District Fireman Map LONG CREEK R.D.

