

Miscellaneous News Items on Mines

Sparta District: The Gem Mine has driven an inclined shaft 75 feet down on the "8 foot" vein, and is milling the ore therefrom. Values are apparently quite low. 9/19/39.

Arizona Mining Journal

— March 1, 1941

Sparta Baker

Production is reported by the Gem Mines, Inc., which operates the Gem of Sparta property at Sparta, Oregon. S. A. Matthews, 2639 Third Street, Baker, is superintendent. During 1940 the shaft was dewatered and retimbered and some ore was shipped. H. C. Kloppenstein of Tacoma, Washington, is president and Hans M. Anderson, 3722 North Proctor Street, Tacoma, is secretary and manager.



Gem of Sparta mine buildings at the right. The collar of the old shaft is inside the building. The new shaft inclines into the hill behind. The mill buildings are at the left of the picture.

Gem of Sparta

TEST run of the mill on ore raised in the course of development attendant upon sinking a new incline shaft at the Gem of Sparta mine, Sparta, Ore., was made recently by Gem Mines, Inc.

This company is headed by H. C. Kloppenstein, 935 Broadway, Tacoma, with Hans Anderson as manager.

S. A. Matthews is superintendent.

In recent months operations have been devoted to pumping out the main shaft and to sinking an incline on another vein, called the "Eight Foot Vein," lying a short distance to the eastward of the main lode, and paralleling it on a 37-degree dip.

Pumping has been done with two Cameron pumps, supplemented by bailing with the skip. The main shaft is vertical for 200 ft. and then inclines on the vein for 600 ft., with drifts at several levels. Dip is so flat as to make rather difficult mining—"too

much mucking for comfort," according to Mr. Matthews.

Power for the mine and mill is supplied by a pair of Atlas-diesel engines, a 6-cyl., 140-hp. motor driving the Ingersoll-Rand compressor, 18 by 16 and 11 by 16; and a 90-hp. 4 cyl. Atlas furnishing most of the power.

Mr. Matthews looks affectionately at the little Atlas and remarks: "That's sure one fine engine. She runs like a watch."

"What about the big one?"

At the left is the main 140-hp. Atlas diesel engine, driving the Ingersoll-Rand compressor, partly seen at the right. Air receiver appears at the left. In the right-hand picture, S. A. Matthews, superintendent, stands beside the 90-hp. Atlas diesel which provides most of the power for the mill.

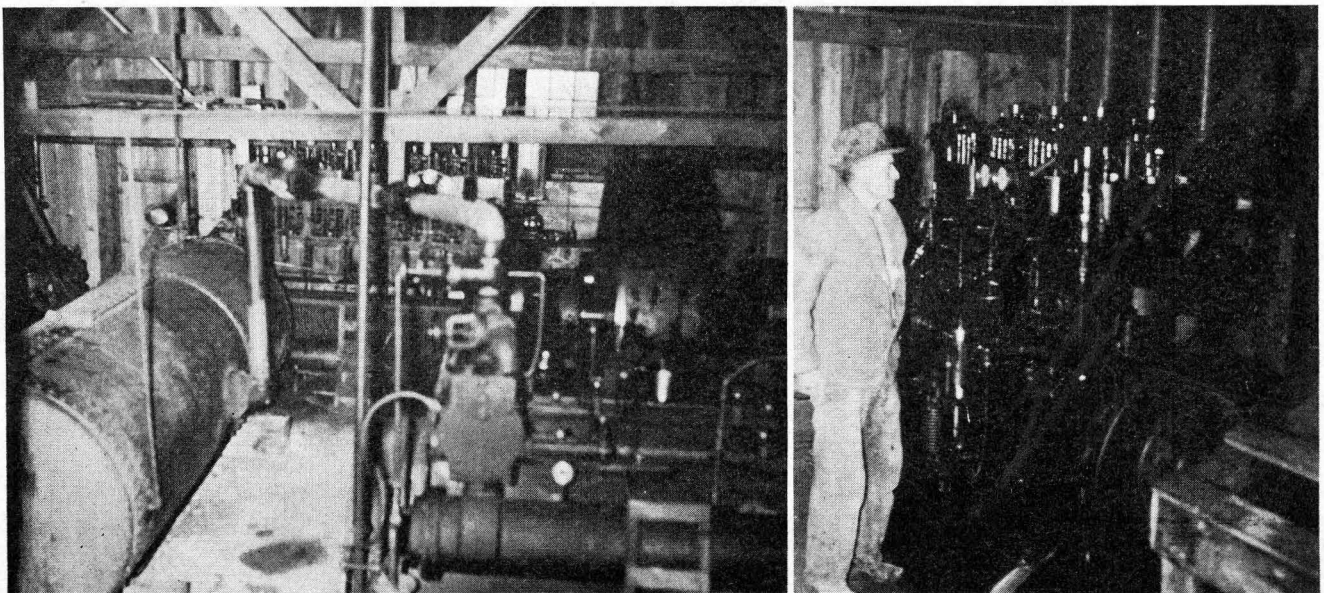
"She comes from the same family. That goes for her, too."

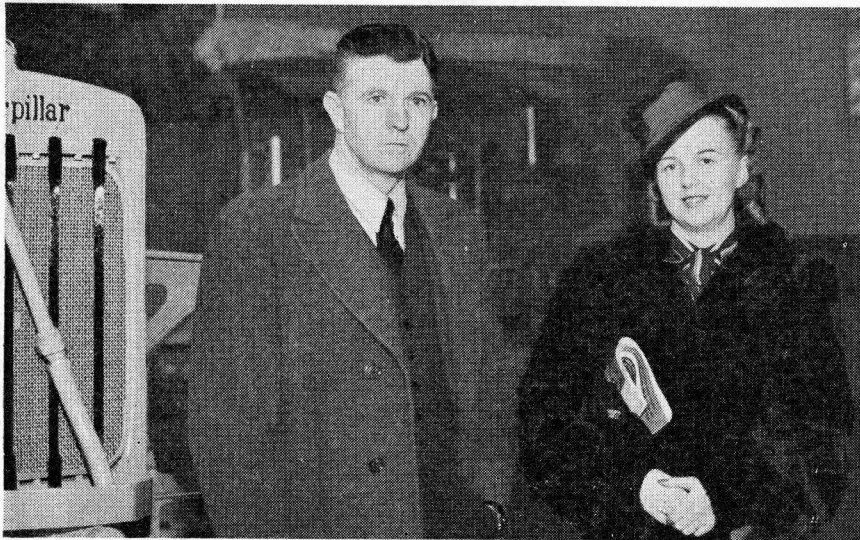
The coarse ore entering the mill goes through a grizzly and into a 10 by 12 Gates type jaw crusher, then through a battery of 10 stamps to two Wilfley amalgamation tables. Overflow from the tables is handled in a Marcy ball mill and then goes through a Denver Equipment Co. 4-cell Sub.-A flotation machine.

The main hoist is air-driven, a Capital City, sold by the Washington Machinery & Storage Co., Seattle.

The mine uses Ingersoll-Rand drills and detachable bits.

The Gem of Sparta mine is an old one, the first mill having been erected on the property in 1873. The strike is virtually due north and south through a deeply decomposed granite country rock. The vein filling consists of crushed and altered granite with streaks and lenses of coarse quartz.





Mr. and Mrs. L. McGee of Hughes, Alaska, stopped at Peoria, Ill., in December while on a trip through the middle west and south. This picture was taken while they were visiting the Caterpillar Tractor Co. plant. Mr. McGee owns and operates the Utopia Creek Mining Co. on the Koyukuk River, 190 miles northwest of Fairbanks.

Mill and Smelter Plan for Grand Coulee

A group of businessmen and small mine owners in the region of Washington tributary to the Grand Coulee Dam in January initiated a movement looking to the construction of a custom mill at the town of Grand Coulee this year. The general plan calls for construction of a smelter adjacent to the dam in 1941, with other mills to be built later in tributary centers as ore supplies warrant.

A. A. Elmore, president of the Washington Prospectors and Miners Association, is a leading figure in the movement, and the units of the association at Grand Coulee, Nespelem, Almira and Wilbur have been taking an active part in promoting the program.

At the end of January a delegation of those interested made a trip through the Chelan and Okanogan regions to acquaint mine owners with the details of the program.

**ASSAYERS • CHEMISTS
METALLURGISTS**
Established 1908

LAUCKS LABORATORIES

314 Maritime Building, Seattle
325 Howe St., Vancouver, B. C.

SCIENTIFIC SUPPLIES CO.
COMPLETE STOCKS

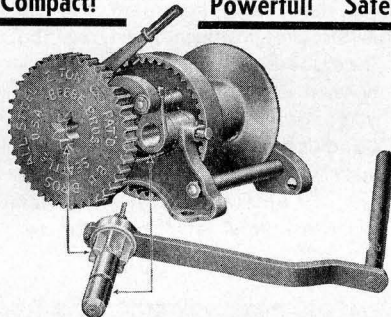
Assay Equipment—Chemicals
Flotation Reagents
Braun Specialties—DFC Clay Goods

Write for Literature
122 Jackson St. SEATTLE

Option Dunwell Mine

Samis, Wilson & Company, Vancouver investment house, has taken an option on the Dunwell mine, at one time one of the best known properties in the Portland Canal area. Adjacent to the Silbak Premier property, the Dunwell mill has a 25 ton capacity that can be increased to 100 tons at small cost.

Compact! Powerful! Safe!



**MONEY HAS BEEN SAVED
ON THESE JOBS**

with

ALL STEEL HAND HOIST

SEATTLE, U.S.A.

DISTRIBUTABLE CONTROLLED POWER

1200' assembled pipe (132 tons) were lowered to bed of Mississippi at St. Paul with 9-5 Ton Beebes.

Longest wooden trusses in world were installed with ONE 5-Ton Beebe after power hoists proved impractical.

The answer to raising, lowering or placing problems is the right number of MANNED IN UNISON, steel hand hoists made by Beebe Bros., 2730-6th Ave. S., Seattle, U. S. A. Available in 2, 5, and 15-ton sizes. Sold through leading dealers everywhere. Send for list of dealers nearest you.

**"THE STRONGEST GEARED POWER
FOR ITS WEIGHT IN THE WORLD"**

W. B. Burnett Again Heads B. C. Chamber

Dr. W. B. Burnett, president of Cariboo Gold Quartz, was re-elected president of the British Columbia Chamber of Mines at its annual meeting in Vancouver Jan. 10.

Vice-presidents are A. E. Jukes, president of Gold Belt Mining Co. and director of Sheep Creek Gold Mines, and W. C. Ditmars, president of Bayonne Mines. Frank Woodside continues as secretary.

The advisory committee consists of C. J. Campbell, S. J. Crocker, Dr. Victor Dolmage, G. S. Eldridge, B. W. Fleck, A. C. Foreman, H. McN. Fraser, J. D. Galloway, Gomer P. Jones, G. F. McDonnell, A. D. MacGillivray, W. G. Norrie-Loewenthal, Morley Shier, R. C. Sweatt and A. M. Whiteside, K. C.

Greenhorn Dredging Co. At Nevada City

A new 1½ cu. yd. dragline and Judson-Pacific washing plant have been placed in operation on a 170-acre tract near Nevada City, Calif., by the Greenhorn Dredging Co., with a crew of 10 men employed.

The dragline is digging to a depth of only 18 ft., but is capable of working to 30 ft. depth. Willard and Devine of the International Trucking Co., Stockton, and Rhoads Grimshaw, Auburn, are associated in the Greenhorn company.

A. C. Hougland Leaves Eureka for Lava Cap

Albert C. Hougland has resigned as superintendent of the Eureka Mining & Milling Co. at Republic, Wash., to join the Lava Cap Mine at Nevada City, Calif. He has been succeeded at the Eureka by Robert S. Wells, who came from the Holden Mine of The Howe Sound Co.

Mr. Hougland and his brother recently sold the Valley Mine near Republic to the James W. Gerard interests.

Jesse R. Villars, E. M.

Mining and Petroleum Geologist
SPECIALIZING IN FAULTS AND
UNUSUAL GEOLOGICAL SITUATIONS

Examinations, Appraisals and
Management of Mines and Prospects
418 Realty Bldg. Spokane, Wash.

Commercial Boiler Works

53 West Lander, SEATTLE

WELDED STEEL HULLS
and BARGES

BOILERS, TANKS,
STEEL PLATE PRODUCTS

GEM OF SPARTA MINE TO START WORKING SOON

**All Claims Against Prop-
erty Satisfied and Set
for New Start**

MINE LOCATED IN SPARTA DISTRICT

**Gem Was One of the First
Quartz Mine Operations
in Eastern Oregon, Re-
opened Two Years Ago.**

The Gem of Sparta mine which was closed more than a year ago by financial difficulties is set for resuming operations early in the spring. All claims against the property have been satisfied and with a reorganization of the company, a Washington corporation, finances for future working have been provided.

Dick DeVine, who has been at the property during the winter was in Baker the fore part of the week. The Gem of Sparta is in the Sparta district northeast of Baker. It was one of the first quartz mine operations in Eastern Oregon.

The new company which undertook to open the mine about two years ago dewatered the shaft and milled some of the ore which was found rich in free gold. The present plan of work is understood to call for pumping out the water and doing some development work before undertaking milling.

Mining & Contract. Review March 15 1938

Sparta Lint Baker County

The Gem of Sparta mine is out of financial difficulties and the operating company reorganized. It is planned to resume operations early in the spring with dewatering and development work.

Sparta Dist.
Baker Co.

Baker Democrat Herald Nov. 9 1940

Suing Mining Company—M. A. Grant filed suit Friday against the Gem Consolidated Gold Mining company et. al., for several sums of money alleged due for labor and as state industrial accident commission and state unemployment compensation fees. The plaintiff, represented by Hallock, Donald and Banta, asks for foreclosure of liens and sale of certain mining property for satisfaction of judgment.

Eastern Oregon News Nov. 17 1939

WORKING AT GEM

At the Gem of Sparta mine in the Sparta section the work is progressing. The shaft has been pumped clear of water and other work is planned. S. A. Mathews is in charge of the work.
