

GRAY EAGLE MINE  
VIRTUE AREA  
BAKER CO.  
Scale 1" = 60 ft.

old raises  
old chutes



see also later  
large scale  
map in files

4/42

25' Winze

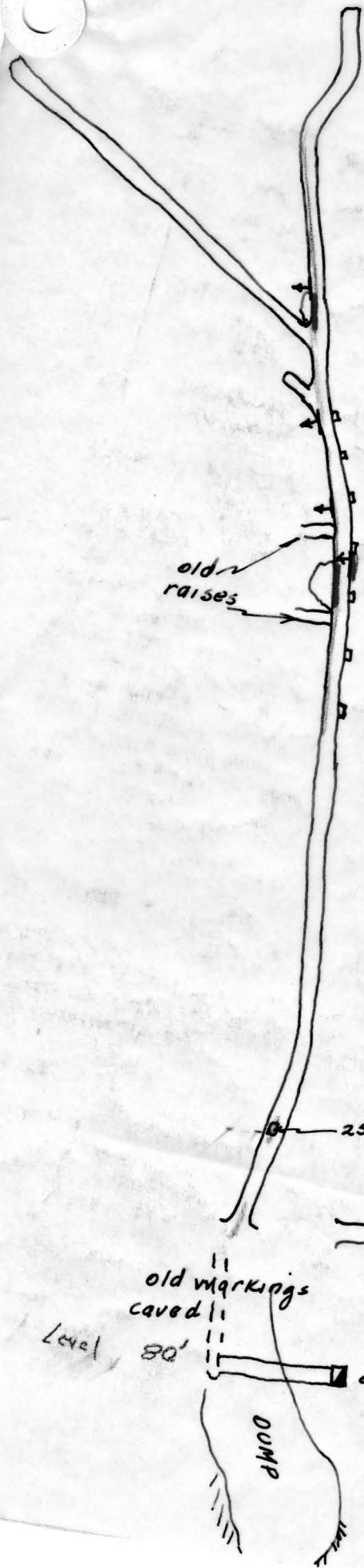
600' N80°E

No mineralization

old markings  
caved  
Level 80'

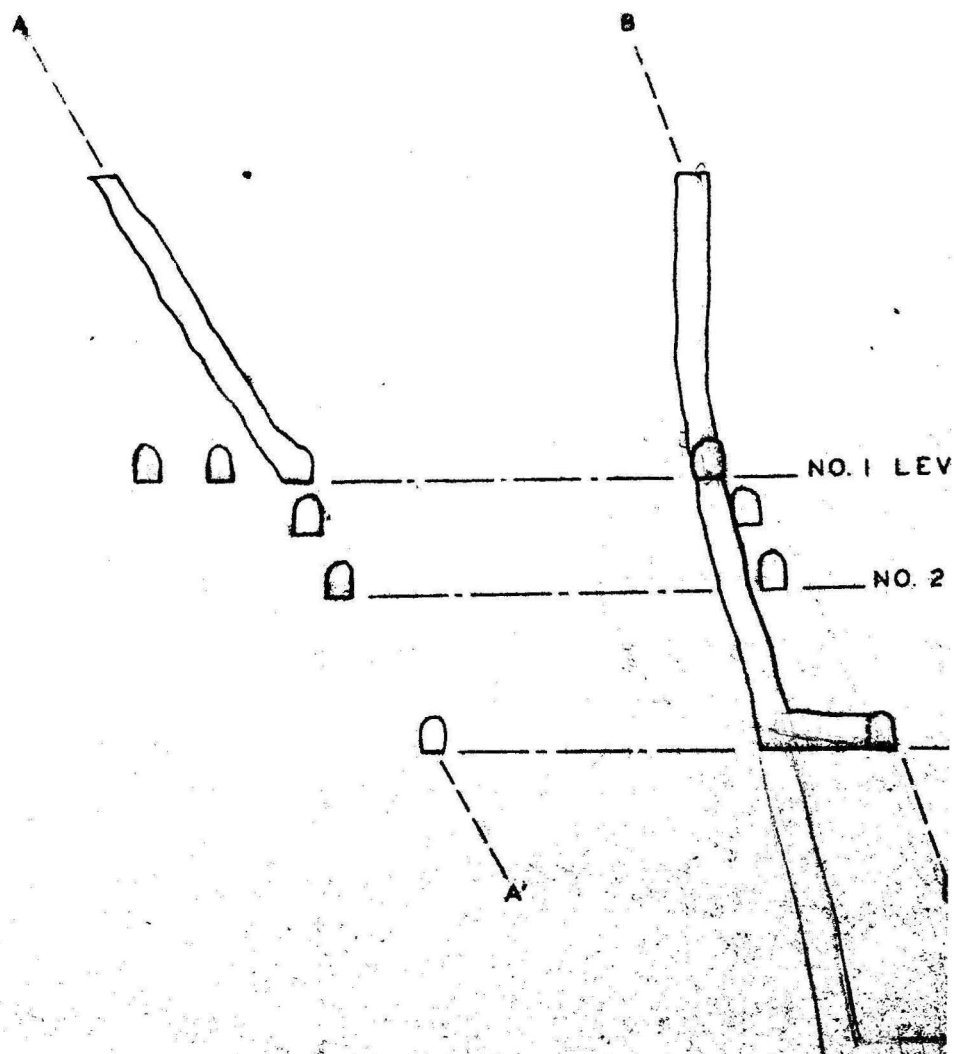
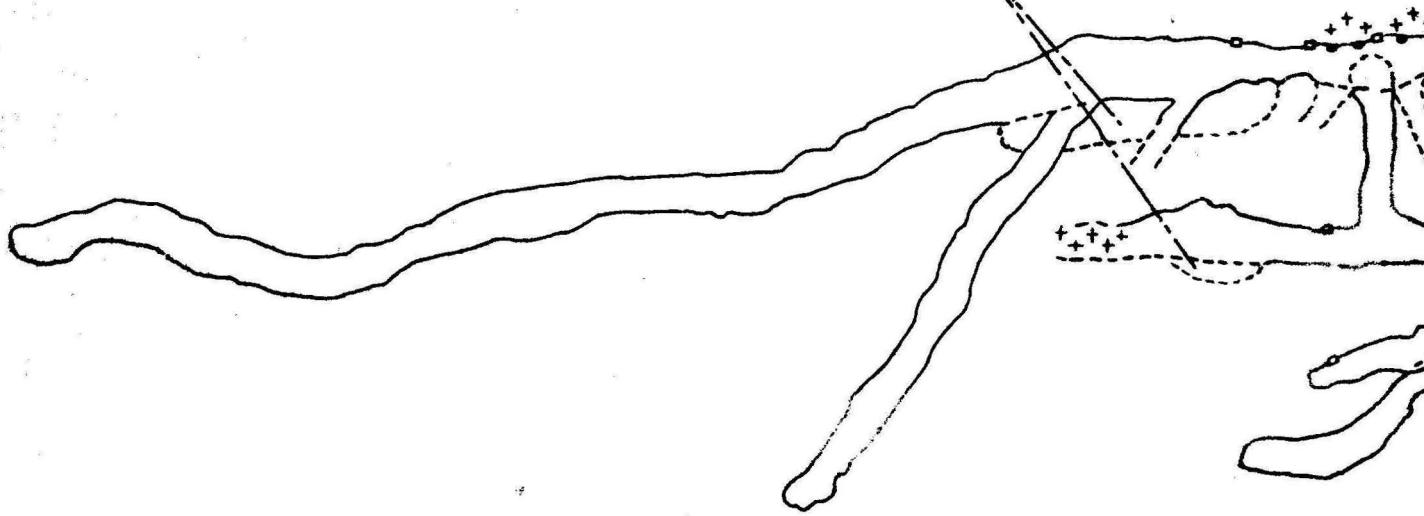
OLD SHAFT.  
55'-80' deep.

DUMP



UNDERCUT STOPE

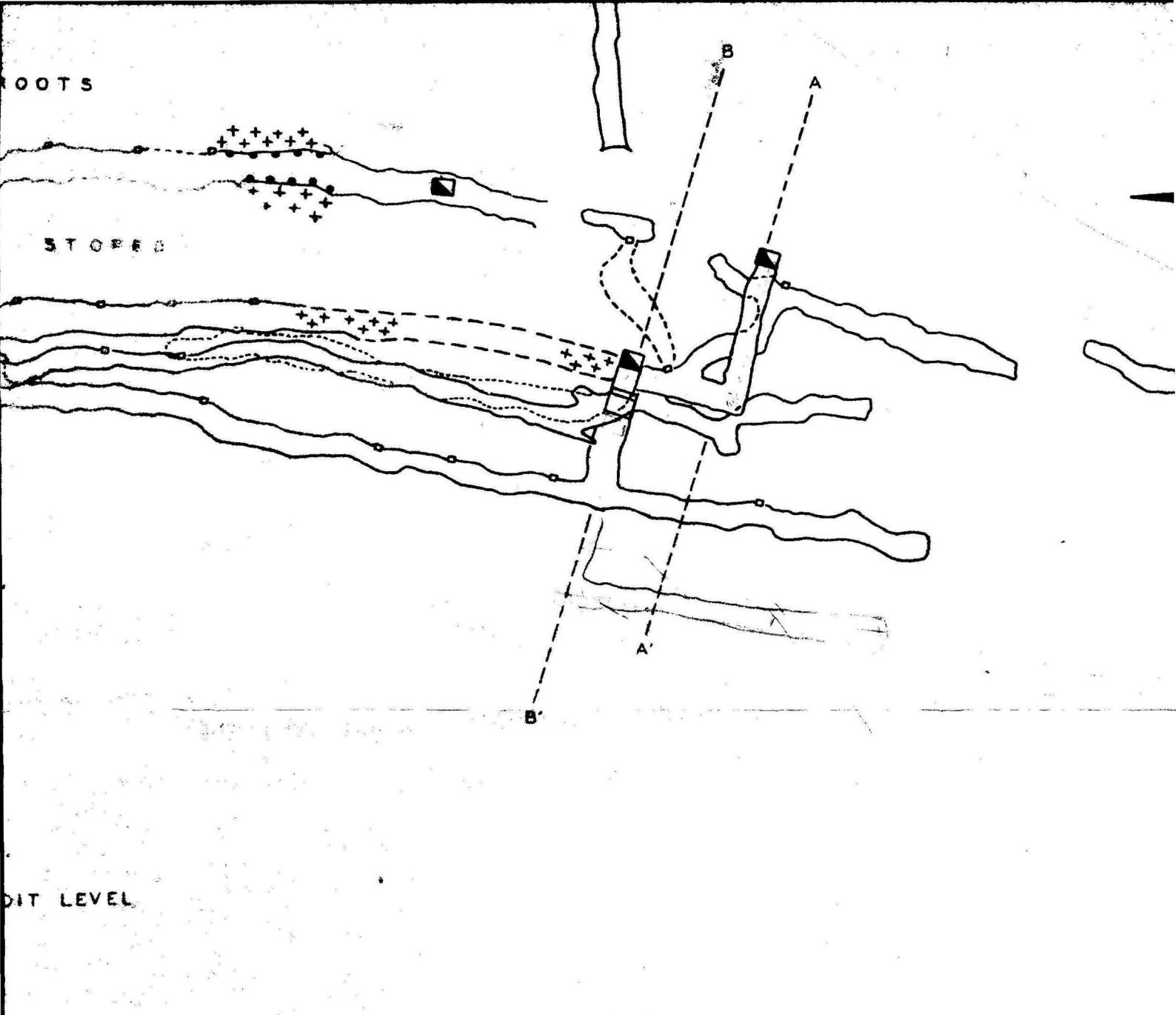
STOPED T



ROOTS

STOPED

DIT LEVEL



**GRAY EAGLE MINE**  
 T9 S. R 41 E. S7. BAKER CO.



COMPILED FROM COMPASS SURVEYS  
 MADE BY NORMAN WAGNER BETWEEN  
 AUGUST 1943 AND DECEMBER 1946

FILLS      + + + +  
                   + + +