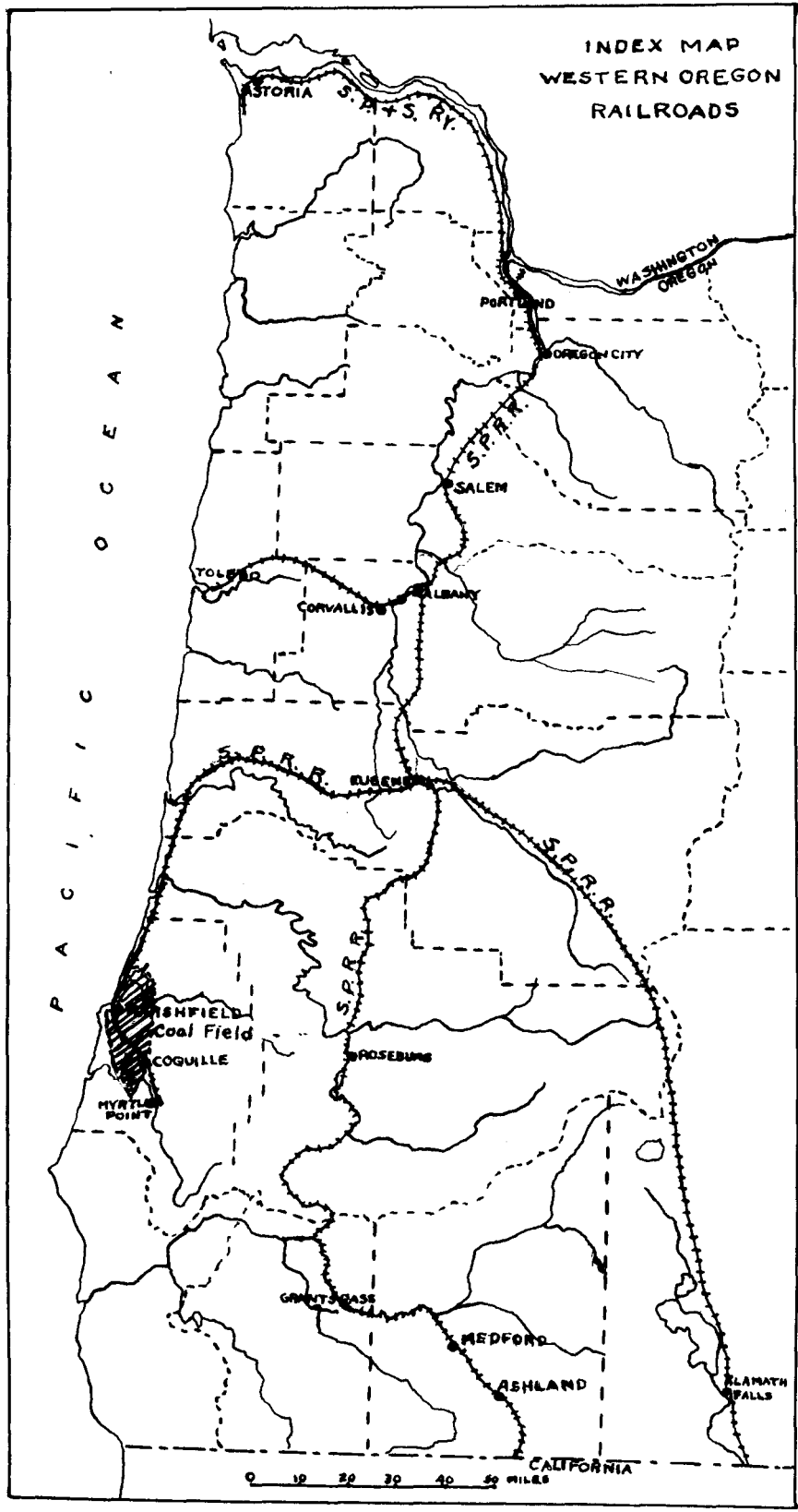


INDEX MAP
WESTERN OREGON
RAILROADS

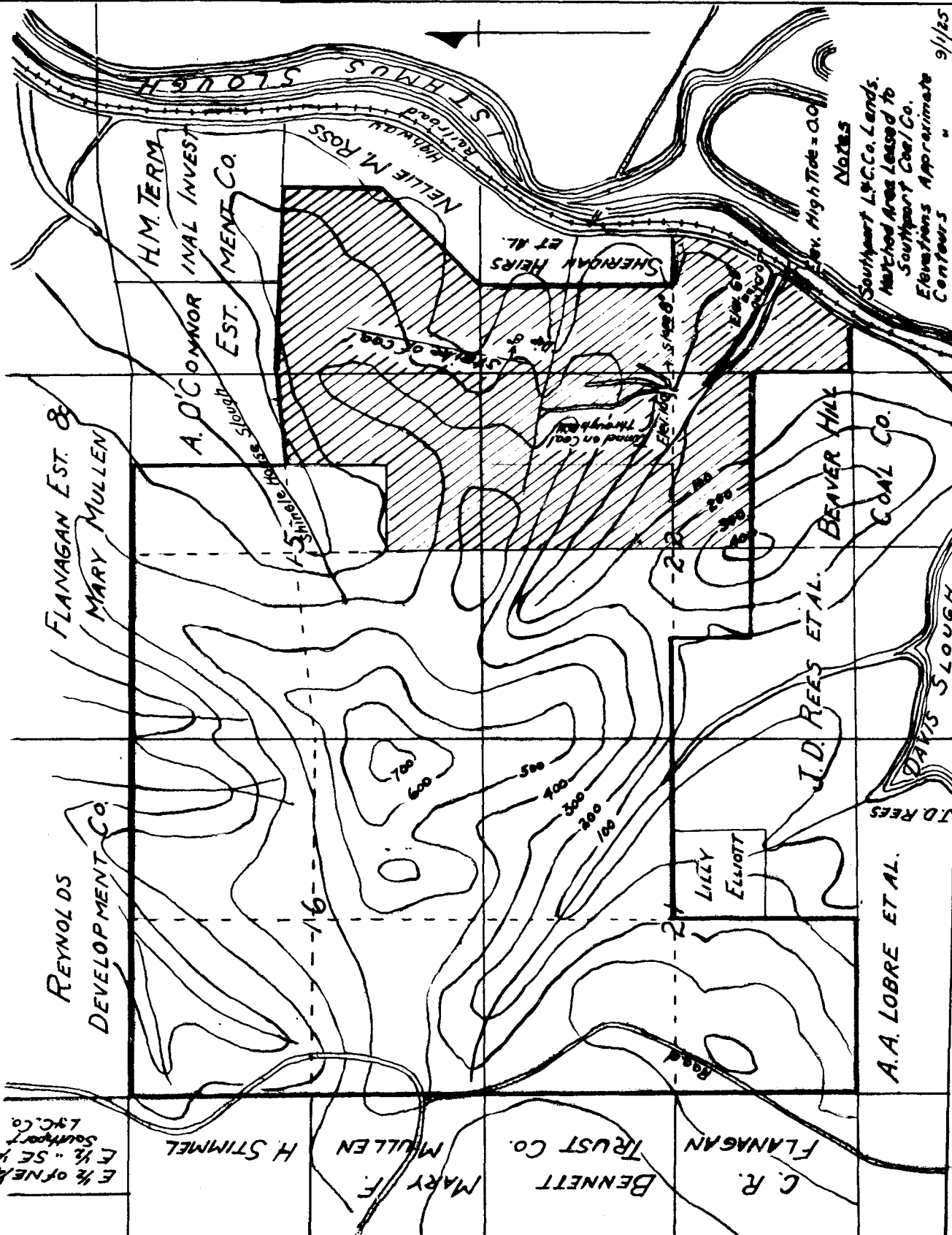


**MAP SHOWING
COAL LAND OF SOUTHPORT LAND & COMMERCIAL COMPANY**

in T.26 S. R.13 W. of Willamette Meridian COOS BAY, OREGON

Scale: 3 inches = 1 mile.

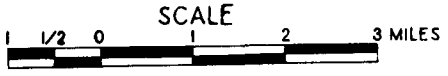
E 1/2 of NE 1/4 Sec 8
Southport
L&C Co.



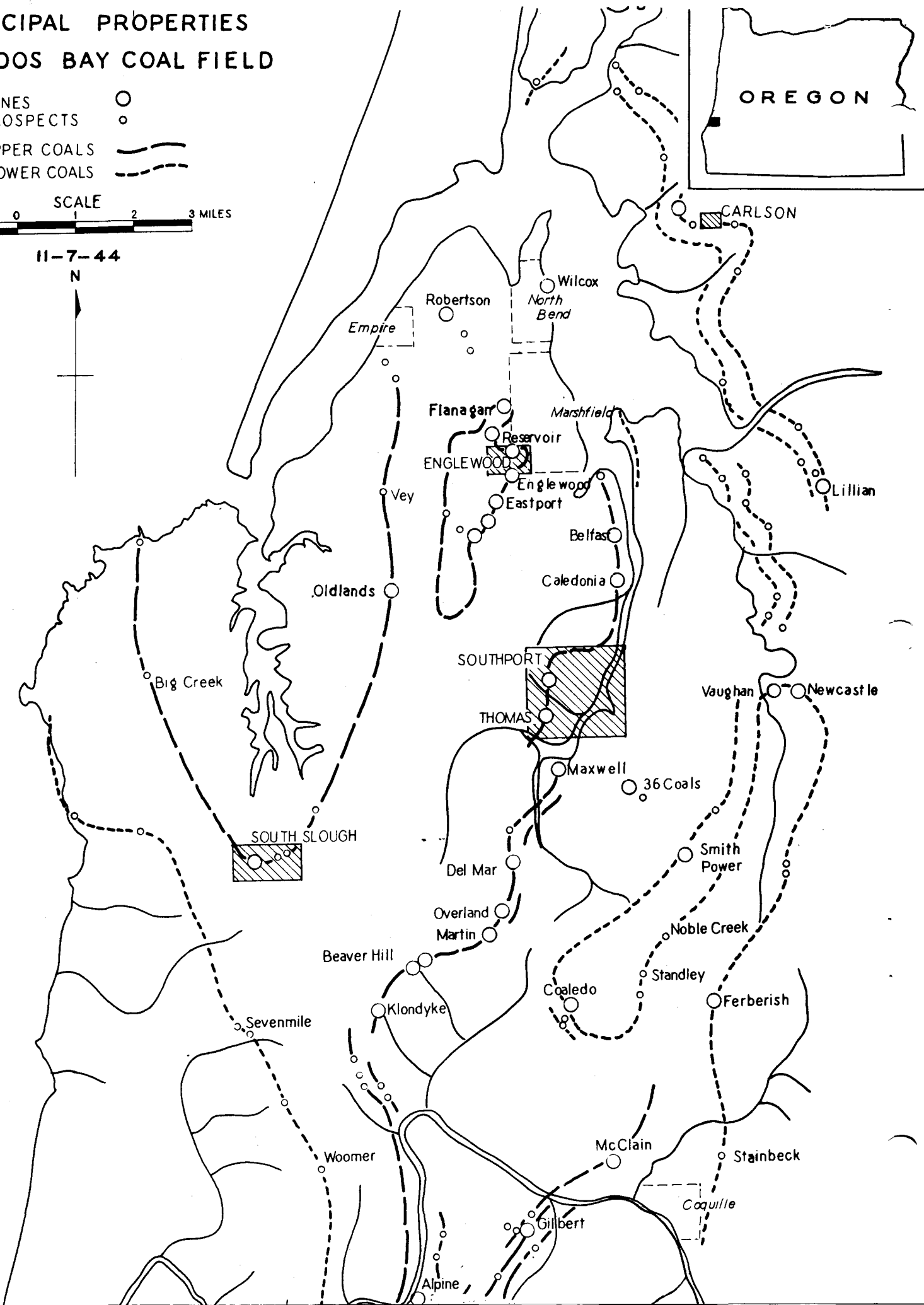
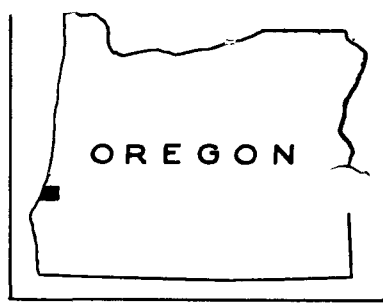
Notes
Southport L&C Co. Lands.
Matched Area Leased To
Southport Coal Co.
Elevations Approximate
Contours 9/125

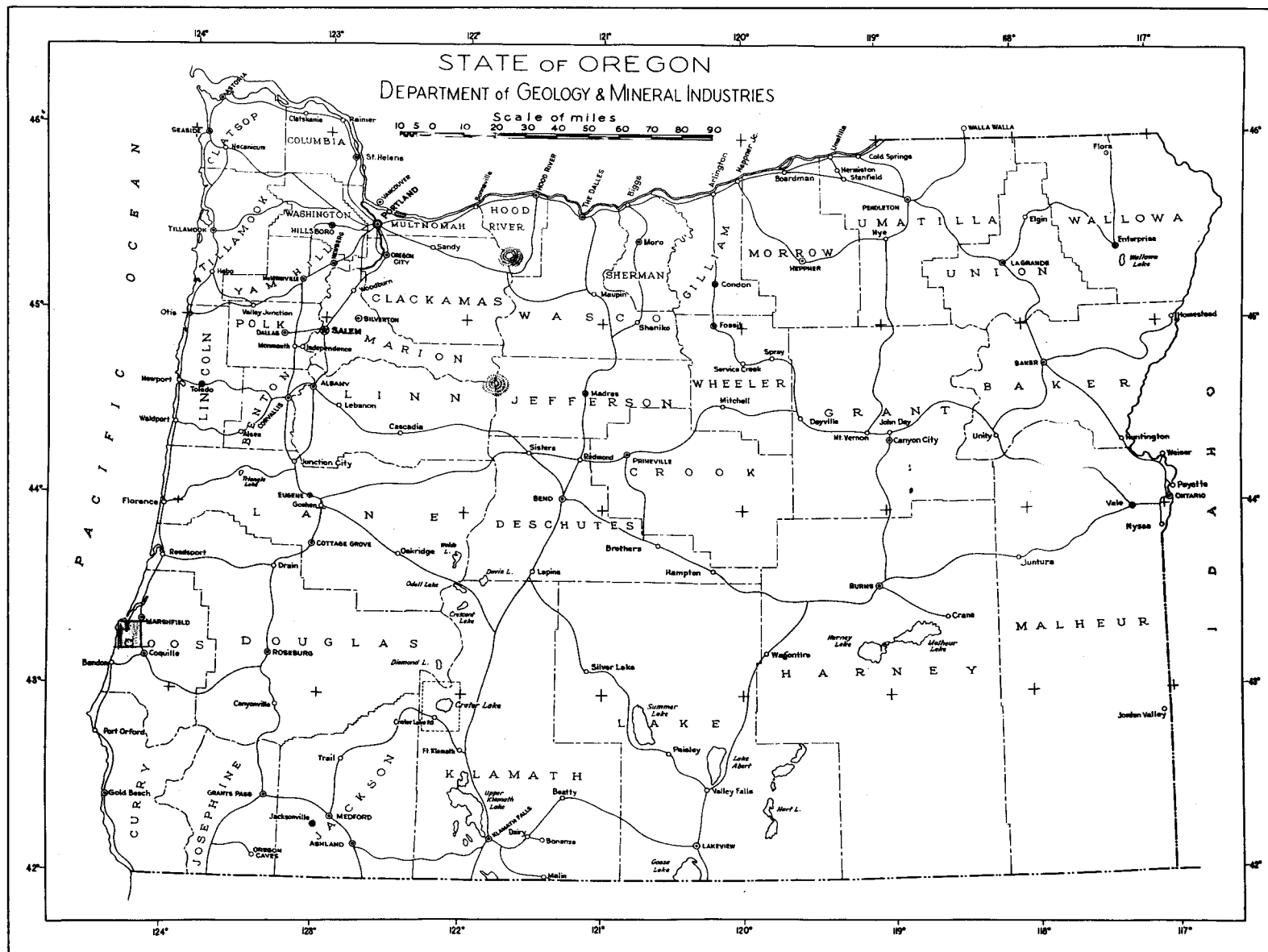
PRINCIPAL PROPERTIES OF COOS BAY COAL FIELD

MINES ○
 PROSPECTS ◦
 UPPER COALS ———
 LOWER COALS - - - -



11-7-44





Index Map Showing Location
of Coos Bay Coal Field