

SALMON GROUP  
 230 ACRES  
 Sec. 19, T. 32 S., R. 12 W.  
 OREGON  
 COOS COUNTY

Rough Sketch  
Not to Scale

HIGHWAY

South Fork Coquille River

Johnson Creek to  
 Coquille River

Trail

Road

Slide down Salmon  
 Dyke  
 This slide part of

Tunnel

100'

Cabin

Auto Road 2 1/2 miles

Truck

Tims Creek

Salmon Creek

N.

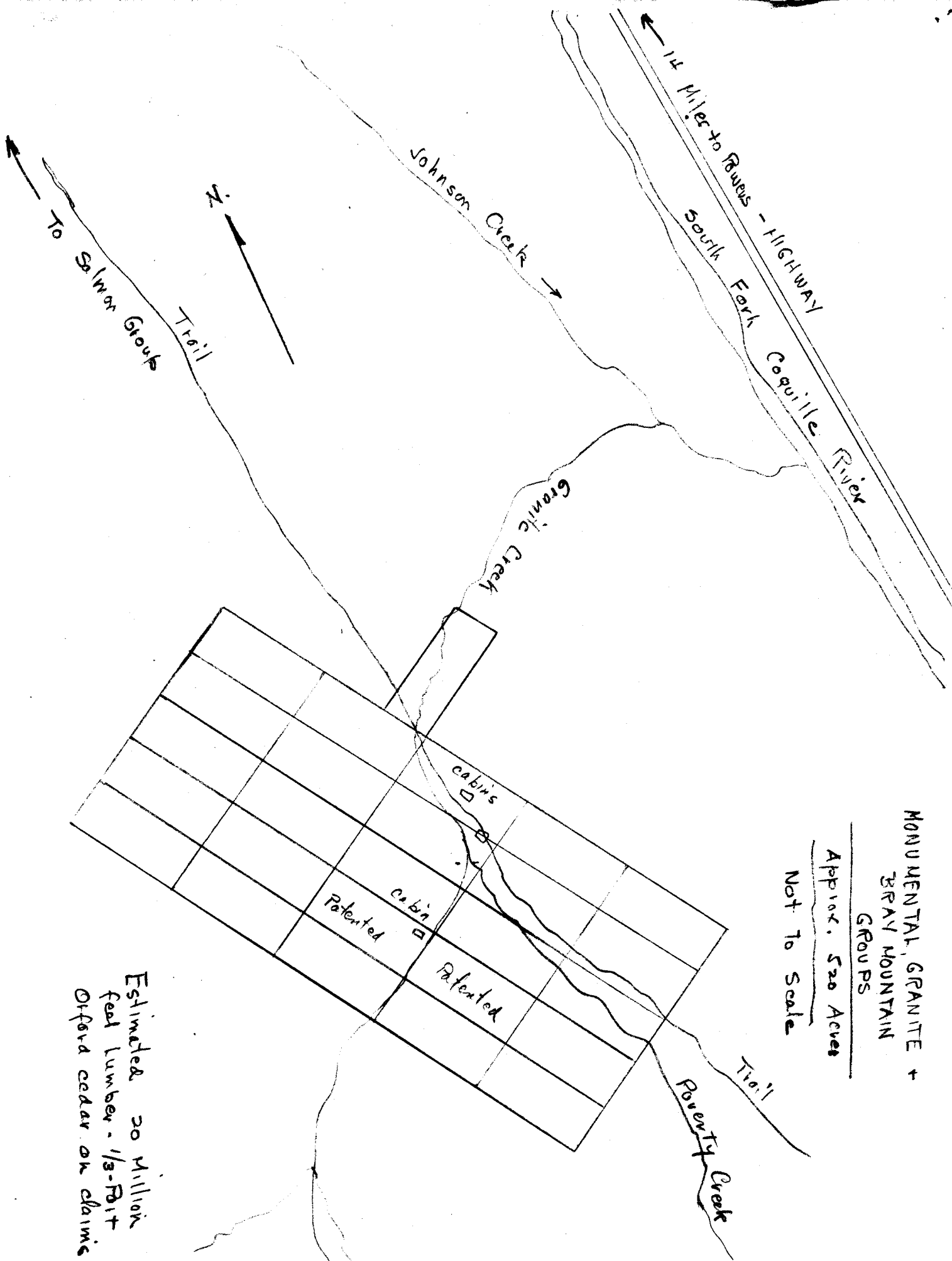
About 23 miles to Port Orford

Southern Pacific R.R.

7 miles to Powers

Powers  
 Ranch

Powers



MONUMENTAL, GRANITE +  
GRAY MOUNTAIN  
GROUPS

Approx. 520 Acres  
Not To Scale

Estimated 30 Million  
feet lumber - 1/3-Flat  
Oxford cedar on claims

1/20/36  
F.M.