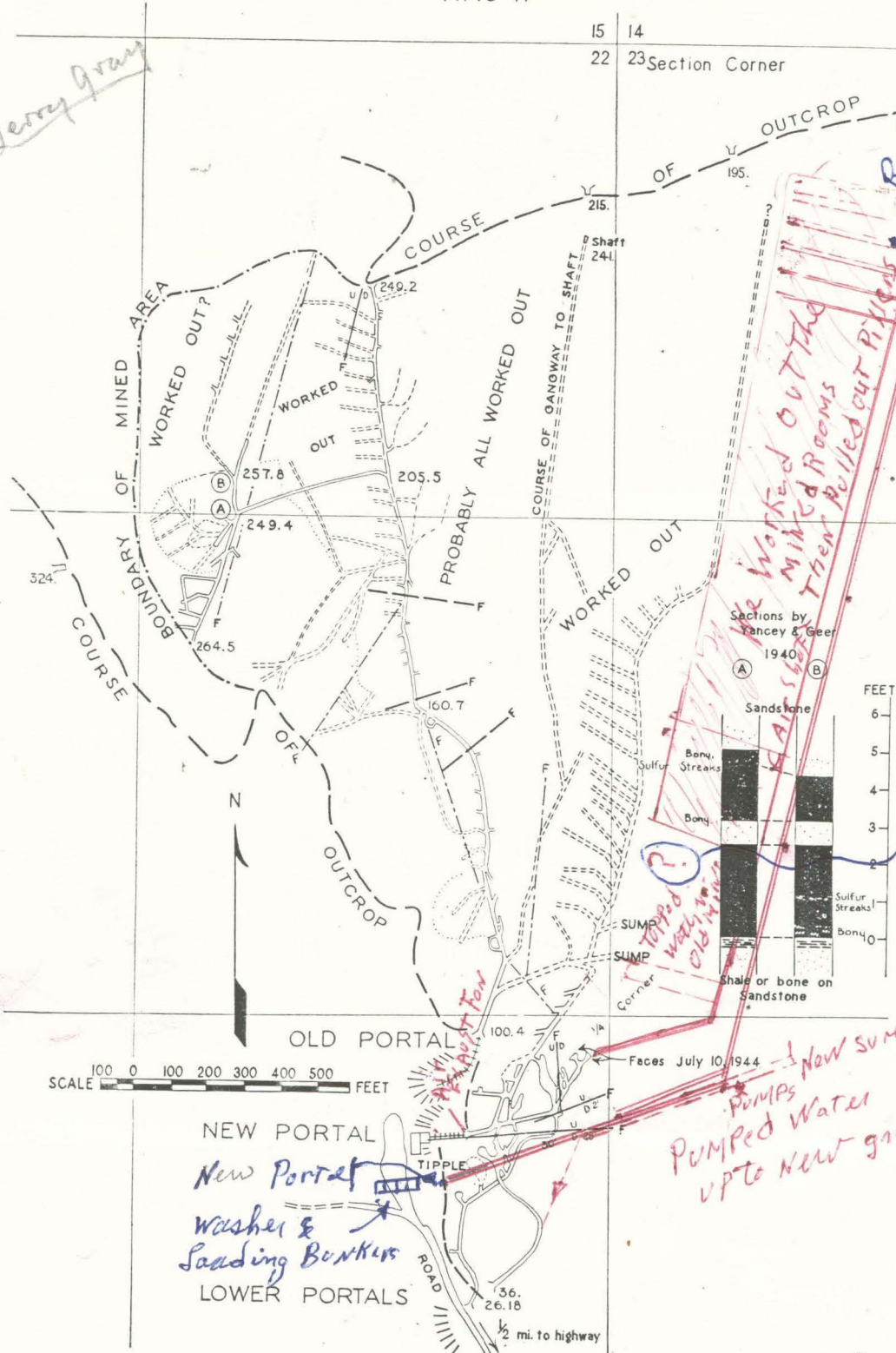


*Jerry Gray*



Southport mine workings.

*Bag covered in early 1948*

*This area is also probably worked out. 4 min. no banded together after new mine. The mine for a period...*

*New sump*

*Pumps*

*Pumped water up to new gravity discharge*

*New Portal*

*Washer & Loading Bunkers*

*LOWER PORTALS*

*ROAD*

*1/2 mi. to highway*