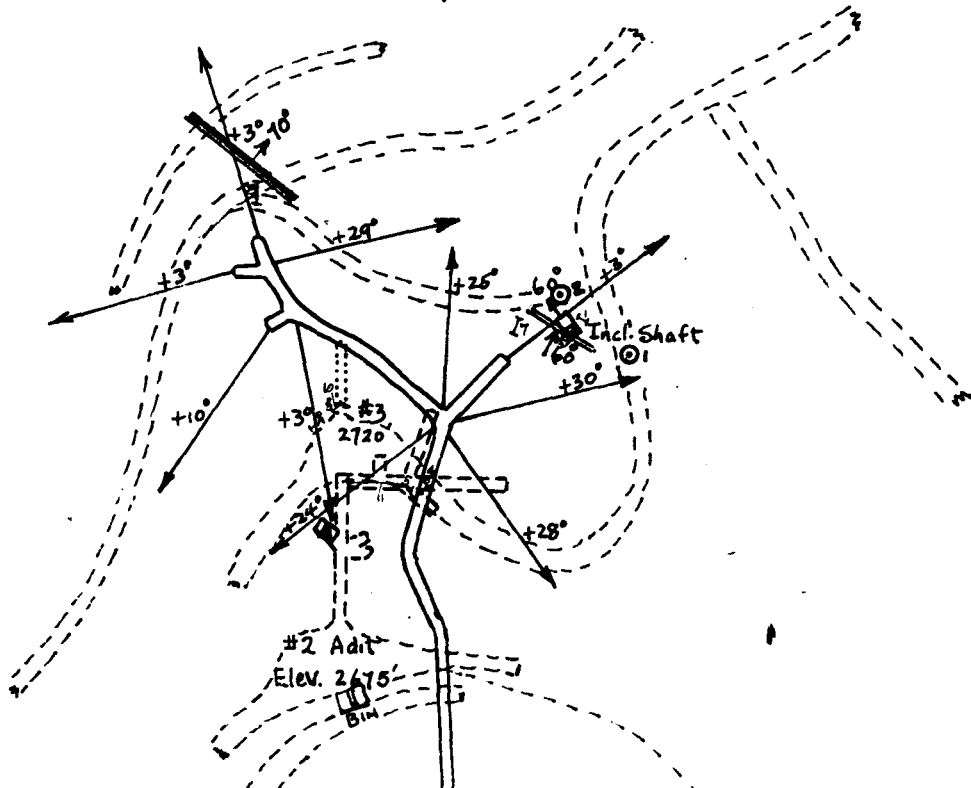


- ==== 2520' - #1 Adit Level.
- 2675' - #2 Adit Level.
- 2720' - #3 Adit Level.
- ↘ 16° Strike & Dip of Mineralized Zone
- Cat Roads
- ▣ Inclined Shaft or Winze

Numbers = Magnetometer Scale Divisions
 @ 25 gammas per div.
 Magnetic Contours = 125 gammas.

MAGNETIC SURVEY MAP
 BOLIVAR COPPER COMPANY
 COOS COUNTY, OREG.
 Scale: 1" = 100'
 April 29, 1957
 J.W. Pressler

N



LEGEND

- Diamond Drill Hole (Underground).
- Diamond Drill Hole, Vertical, Surface.
- 2520' Level.
- 2675' Level.
- 2720' Level.
- Strike & Dip of Mineralized Dike.
- Cat Roads
- Sample Cuts
- Datum Assumed
- Brunton & Tape Survey.

MINE MAP
 BOLIVAR COPPER COMPANY
 COOS COUNTY, OREG.
 Scale: 1" = 100'
 APRIL 25, 1957
 J. W. PRESSLER

REFERENCE MAPS:

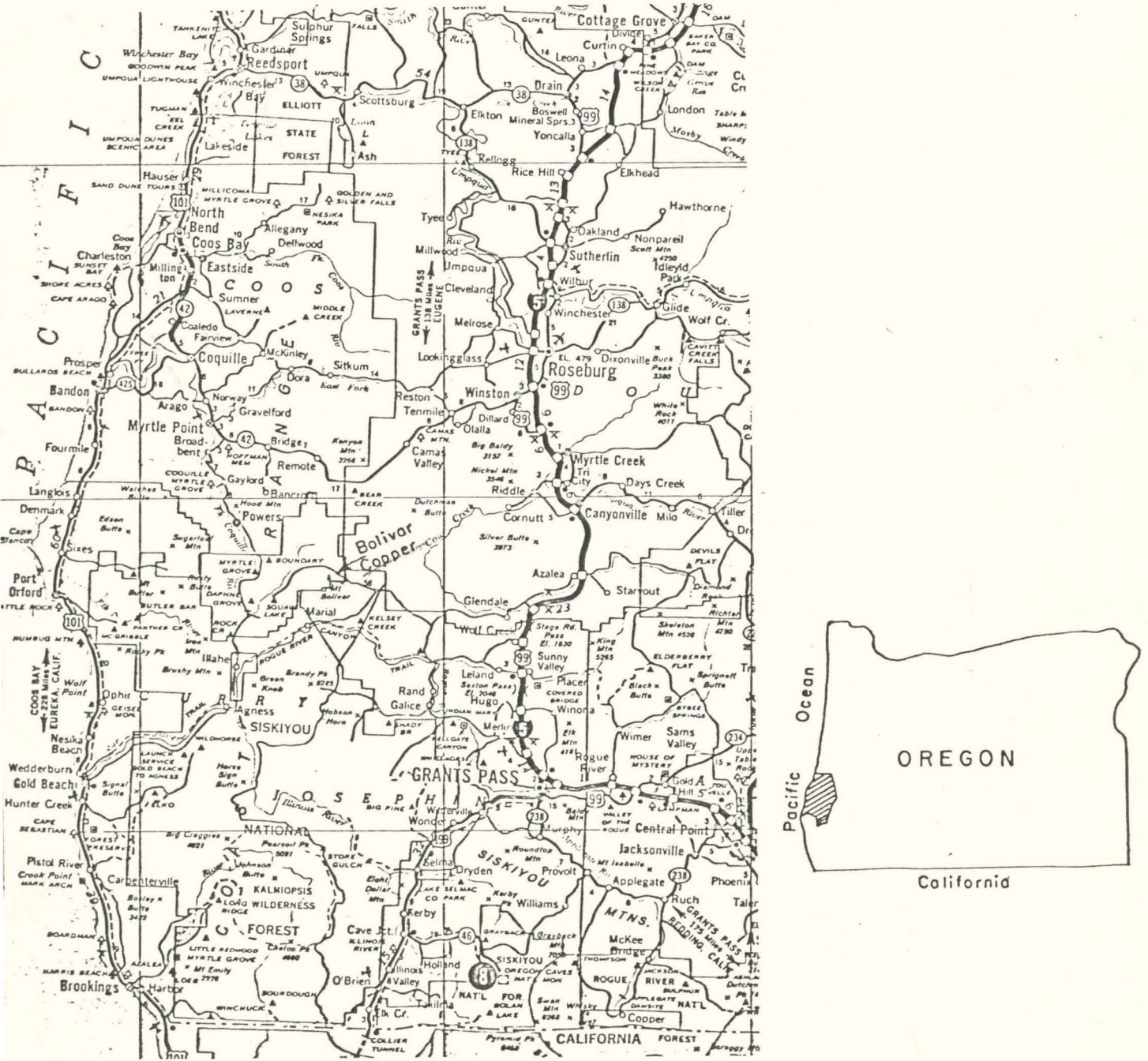
TOPOGRAPHY - BONE MT. 15 MIN. QUAD.

GEOLOGY - GEOLOGICAL MAP.

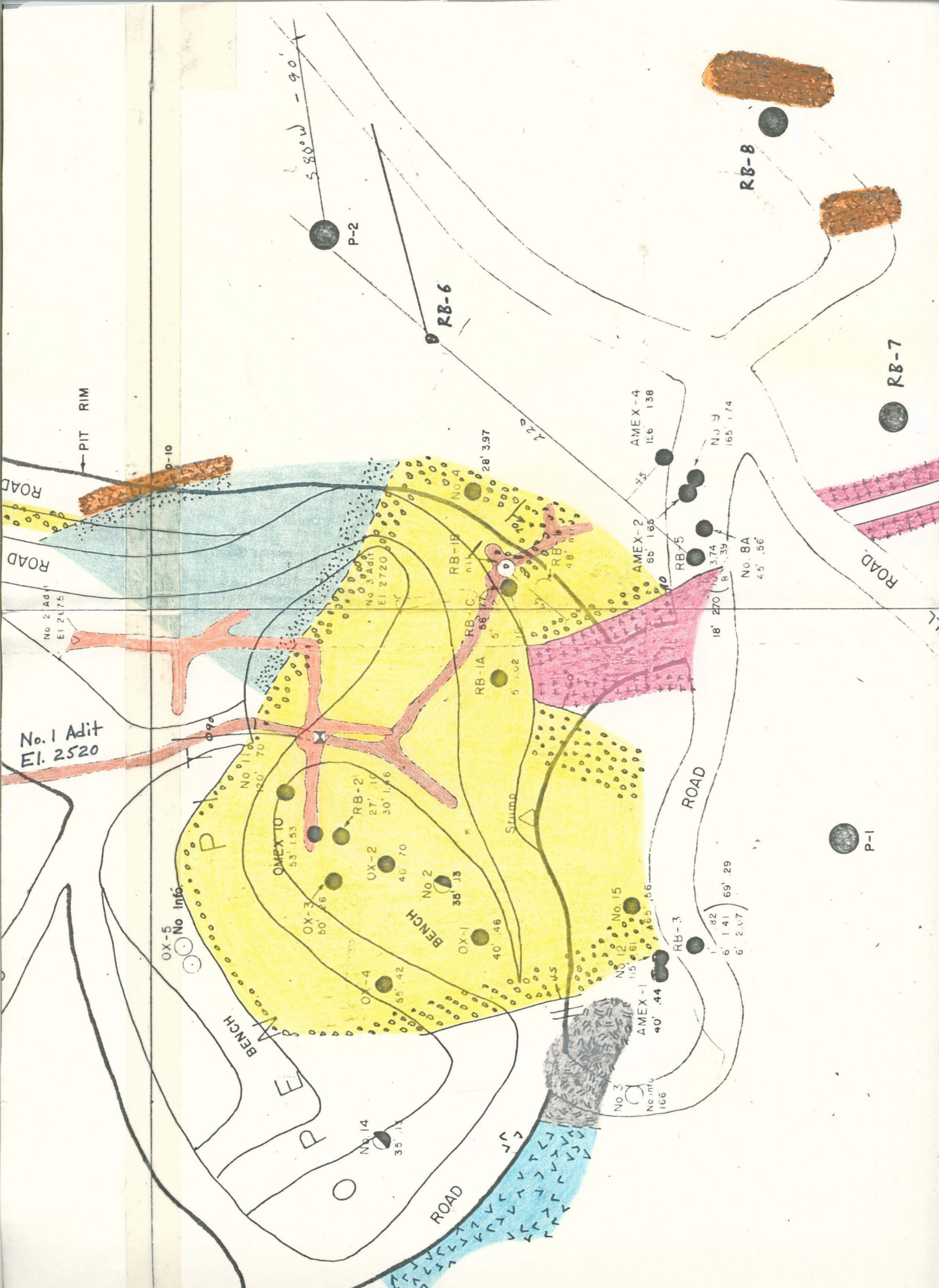
SOUTH SECTOR COOS COUNTY

STATE OF OREGON BULLETIN 80.

SCALE: 1" = 20 MILES



INDEX MAP BOLIVAR COPPER PROSPECT
COOS COUNTY, OREGON.



No. 1 Adit
El. 2520

No. 2 Adit
El. 2675

PIT RIM

OX-5
No Info.

OX-3
50' .26

OMEX-10
53' .153

OX-2
40' .70

OX-1
40' .46

OX-4
55' .42

OX-1
35' .13

OX-2
27' .10

OX-3
30' .146

OX-4
40' .70

OX-5
53' .153

ROAD

ROAD

ROAD

ROAD

ROAD

BENCH

BENCH

BENCH

BENCH

BENCH

BENCH

RB-1A
5' .02

RB-1B
5' .02

RB-1C
5' .02

RB-1D
5' .02

RB-1E
5' .02

RB-1F
5' .02

RB-1G
5' .02

RB-1H
5' .02

RB-1I
5' .02

RB-1J
5' .02

RB-1K
5' .02

RB-1L
5' .02

RB-1M
5' .02

RB-1N
5' .02

RB-1O
5' .02

RB-1P
5' .02

RB-1Q
5' .02

RB-1R
5' .02

RB-1S
5' .02

RB-1T
5' .02

RB-1U
5' .02

RB-1V
5' .02

RB-1W
5' .02

RB-1X
5' .02

RB-1Y
5' .02

RB-1Z
5' .02

RB-2A
5' .02

RB-2B
5' .02

RB-2C
5' .02

RB-2D
5' .02

RB-2E
5' .02

RB-2F
5' .02

RB-2G
5' .02

RB-2H
5' .02

RB-2I
5' .02

RB-2J
5' .02

RB-2K
5' .02

RB-2L
5' .02

RB-2M
5' .02

RB-2N
5' .02

RB-2O
5' .02

RB-2P
5' .02

RB-2Q
5' .02

RB-2R
5' .02

RB-2S
5' .02

RB-2T
5' .02

RB-2U
5' .02

RB-2V
5' .02

RB-2W
5' .02

RB-2X
5' .02

RB-2Y
5' .02

RB-2Z
5' .02

RB-3A
5' .02

RB-3B
5' .02

RB-3C
5' .02

RB-3D
5' .02

RB-3E
5' .02

RB-3F
5' .02

RB-3G
5' .02

RB-3H
5' .02

RB-3I
5' .02

RB-3J
5' .02

RB-3K
5' .02

RB-3L
5' .02

RB-3M
5' .02

RB-3N
5' .02

RB-3O
5' .02

RB-3P
5' .02

RB-3Q
5' .02

RB-3R
5' .02

RB-3S
5' .02

RB-3T
5' .02

RB-3U
5' .02

RB-3V
5' .02

RB-3W
5' .02

RB-3X
5' .02

RB-3Y
5' .02

RB-3Z
5' .02

RB-4A
5' .02

RB-4B
5' .02

RB-4C
5' .02

RB-4D
5' .02

RB-4E
5' .02

RB-4F
5' .02

RB-4G
5' .02

RB-4H
5' .02

RB-4I
5' .02

RB-4J
5' .02

RB-4K
5' .02

RB-4L
5' .02

RB-4M
5' .02

RB-4N
5' .02

RB-4O
5' .02

RB-4P
5' .02

RB-4Q
5' .02

RB-4R
5' .02

RB-4S
5' .02

RB-4T
5' .02

RB-4U
5' .02

RB-4V
5' .02

RB-4W
5' .02

RB-4X
5' .02

RB-4Y
5' .02

RB-4Z
5' .02

RB-5A
5' .02

RB-5B
5' .02

RB-5C
5' .02

RB-5D
5' .02

RB-5E
5' .02

RB-5F
5' .02

RB-5G
5' .02

RB-5H
5' .02

RB-5I
5' .02

RB-5J
5' .02

RB-5K
5' .02

RB-5L
5' .02

RB-5M
5' .02

RB-5N
5' .02

RB-5O
5' .02

RB-5P
5' .02

RB-5Q
5' .02

RB-5R
5' .02

RB-5S
5' .02

RB-5T
5' .02

RB-5U
5' .02

RB-5V
5' .02

RB-5W
5' .02

RB-5X
5' .02

RB-5Y
5' .02

RB-5Z
5' .02

RB-6A
5' .02

RB-6B
5' .02

RB-6C
5' .02

RB-6D
5' .02

RB-6E
5' .02

RB-6F
5' .02

RB-6G
5' .02

RB-6H
5' .02

RB-6I
5' .02

RB-6J
5' .02

RB-6K
5' .02

RB-6L
5' .02

RB-6M
5' .02

RB-6N
5' .02

RB-6O
5' .02

RB-6P
5' .02

RB-6Q
5' .02

RB-6R
5' .02

RB-6S
5' .02

RB-6T
5' .02

RB-6U
5' .02

RB-6V
5' .02

RB-6W
5' .02

RB-6X
5' .02

RB-6Y
5' .02

RB-6Z
5' .02

RB-7A
5' .02

RB-7B
5' .02

RB-7C
5' .02

RB-7D
5' .02

RB-7E
5' .02

RB-7F
5' .02

RB-7G
5' .02

RB-7H
5' .02

RB-7I
5' .02

RB-7J
5' .02

RB-7K
5' .02

RB-7L
5' .02

RB-7M
5' .02

RB-7N
5' .02

RB-7O
5' .02

RB-7P
5' .02

RB-7Q
5' .02

RB-7R
5' .02

RB-7S
5' .02

RB-7T
5' .02

RB-7U
5' .02

RB-7V
5' .02

RB-7W
5' .02

RB-7X
5' .02

RB-7Y
5' .02

RB-7Z
5' .02

RB-8A
5' .02

RB-8B
5' .02

RB-8C
5' .02

RB-8D
5' .02

RB-8E
5' .02

RB-8F
5' .02

RB-8G
5' .02

RB-8H
5' .02

RB-8I
5' .02

RB-8J
5' .02

RB-8K
5' .02

RB-8L
5' .02

RB-8M
5' .02

RB-8N
5' .02

RB-8O
5' .02

RB-8P
5' .02

RB-8Q
5' .02

RB-8R
5' .02

RB-8S
5' .02

RB-8T
5' .02

RB-8U
5' .02

RB-8V
5' .02

RB-8W
5' .02

RB-8X
5' .02

RB-8Y
5' .02

RB-8Z
5' .02

RB-9A
5' .02

RB-9B
5' .02

RB-9C
5' .02

RB-9D
5' .02

RB-9E
5' .02

RB-9F
5' .02

RB-9G
5' .02

RB-9H
5' .02

RB-9I
5' .02

RB-9J
5' .02

RB-9K
5' .02

RB-9L
5' .02

RB-9M
5' .02

RB-9N
5' .02

RB-9O
5' .02

RB-9P
5' .02

RB-9Q
5' .02

RB-9R
5' .02

RB-9S
5' .02

RB-9T
5' .02

RB-9U
5' .02

RB-9V
5' .02

RB-9W
5' .02

RB-9X
5' .02

RB-9Y
5' .02

RB-9Z
5' .02

RB-10A
5' .02

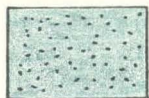
RB-10B
5' .02

RB-10C

EXPLANATION



PILLOW BASALT



CHLORITIC BASALT - FRACTURES WITH WHITE MINERAL FILLED



PORPHYRITIC BASALT



FINE-GRAINED ANDESITE



QUARTZ DIORITE, ALTERED

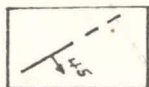


PORPHYRITIC RHYOLITE - SILL or FLOW (FLAT LYING)

ROGUE VOLCANICS

of

JURASSIC AGE



FAULT



NO. 1 LEVEL



NO. 2 LEVEL

ELOPMENT CORP.

