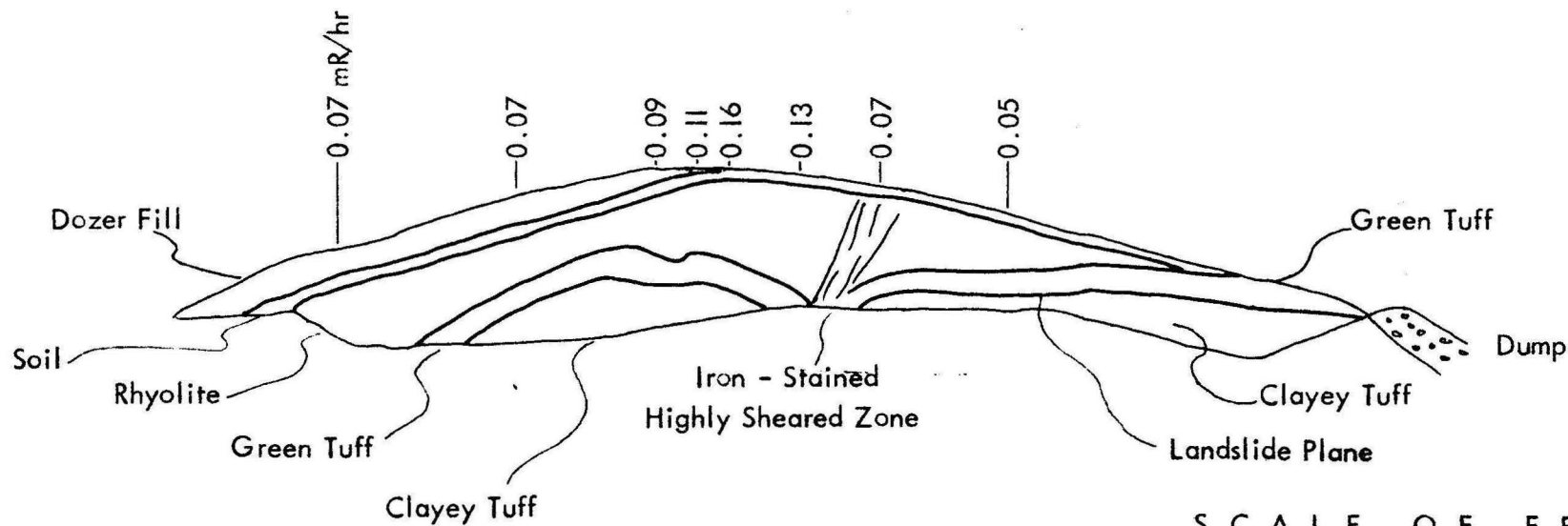


Sketch Showing East Wall of Trench "D"
 BEAR CREEK AREA URANIUM OCCURRENCE
 Sage Hollow Mining Corporation
 Sec. 13, T.18 S., R.16 E.
 Crook County, Oregon



Brunton and Pace Survey
 by
 Max Schafer and Herb Schlicker
 December 16, 1955



Sketch Showing East Wall of Trench "C"
 BEAR CREEK AREA URANIUM OCCURRENCE

Sage Hollow Mining Corporation

Sec. 13, T.18 S., R.16 E.

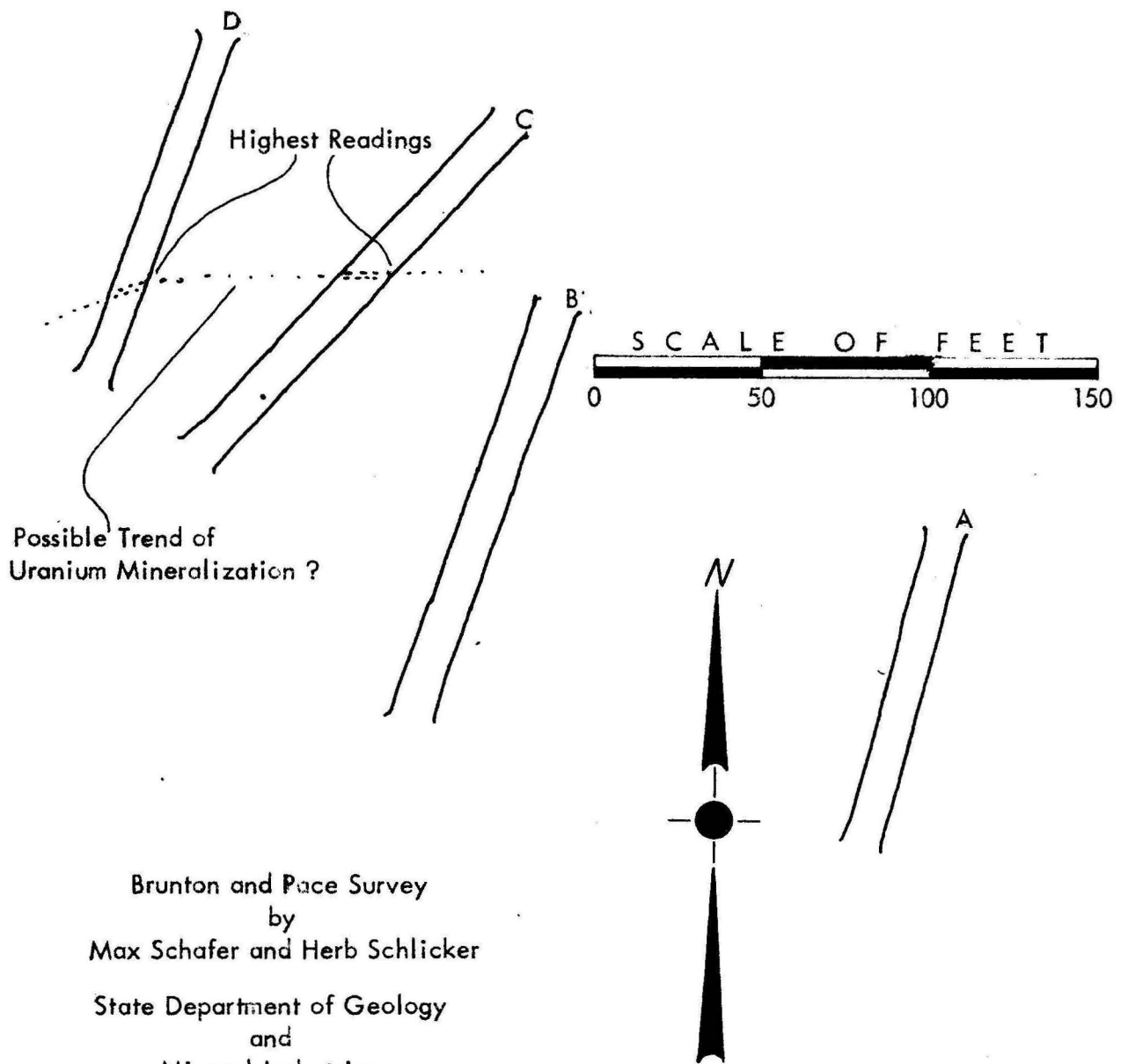
Crook County, Oregon



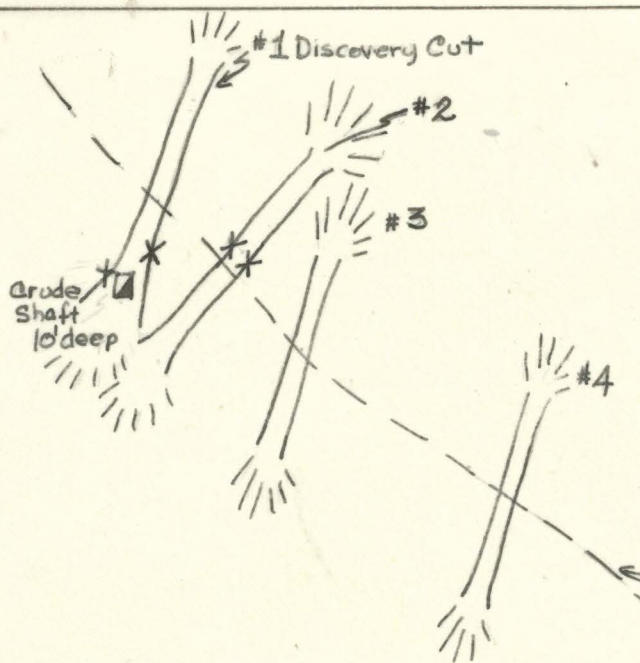
Brunton and Pace Survey
 by
 Max Schafer and Herb Schlicker

December 16, 1955

Sketch Map Showing
EXPLORATION TRENCHES
on the
BEAR CREEK AREA URANIUM OCCURRENCE
Sage Hollow Mining Corporation
Sec. 13, T.18 S., R.16 E.
Crook County, Oregon

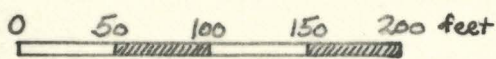


Brunton and Pace Survey
by
Max Schafer and Herb Schlicker
State Department of Geology
and
Mineral Industries
December 16, 1955

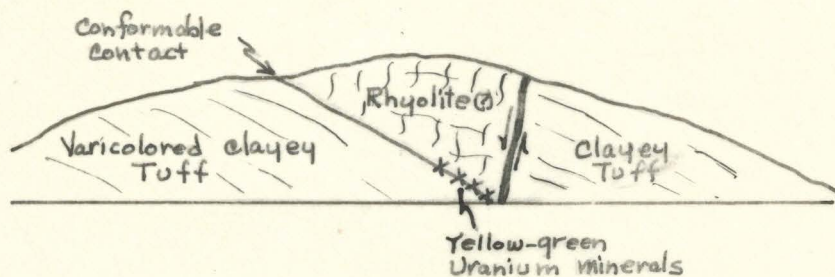
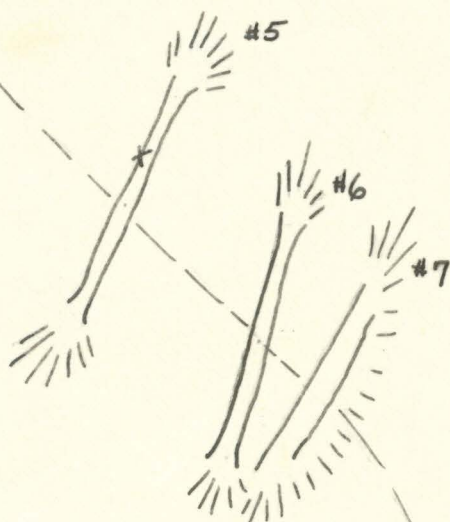


Rough Sketch of Bear Creek Area
Uranium Occurrence
Development Cuts

X - Location of Visible Uranium Minerals



Scale - 1" = 100'



Sketch Showing Southeast Wall
Development cut #2

Scale - 1" = 25'

Brunton Compass
and Pace
Survey
N.V. Peterson
June 4, 1958