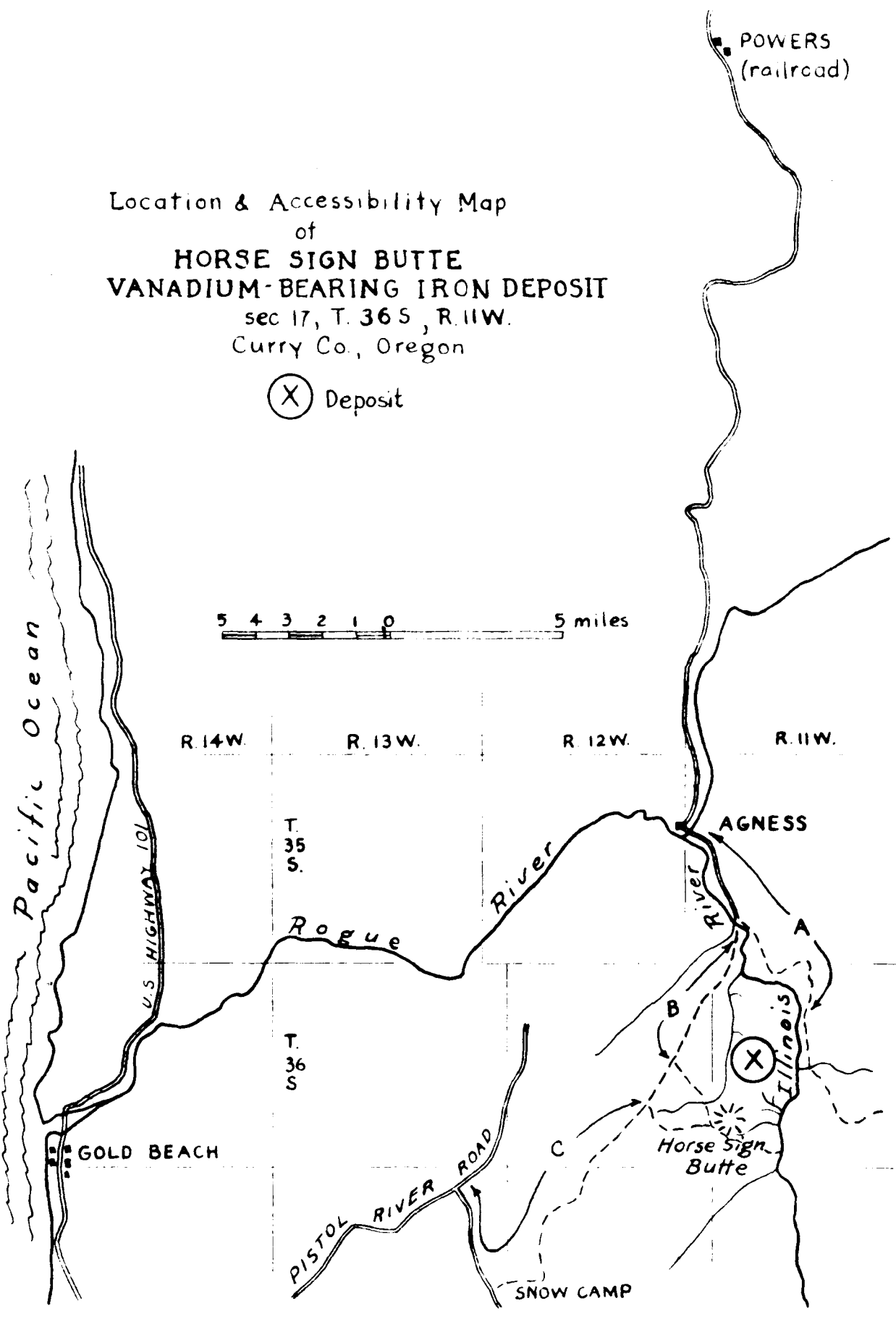


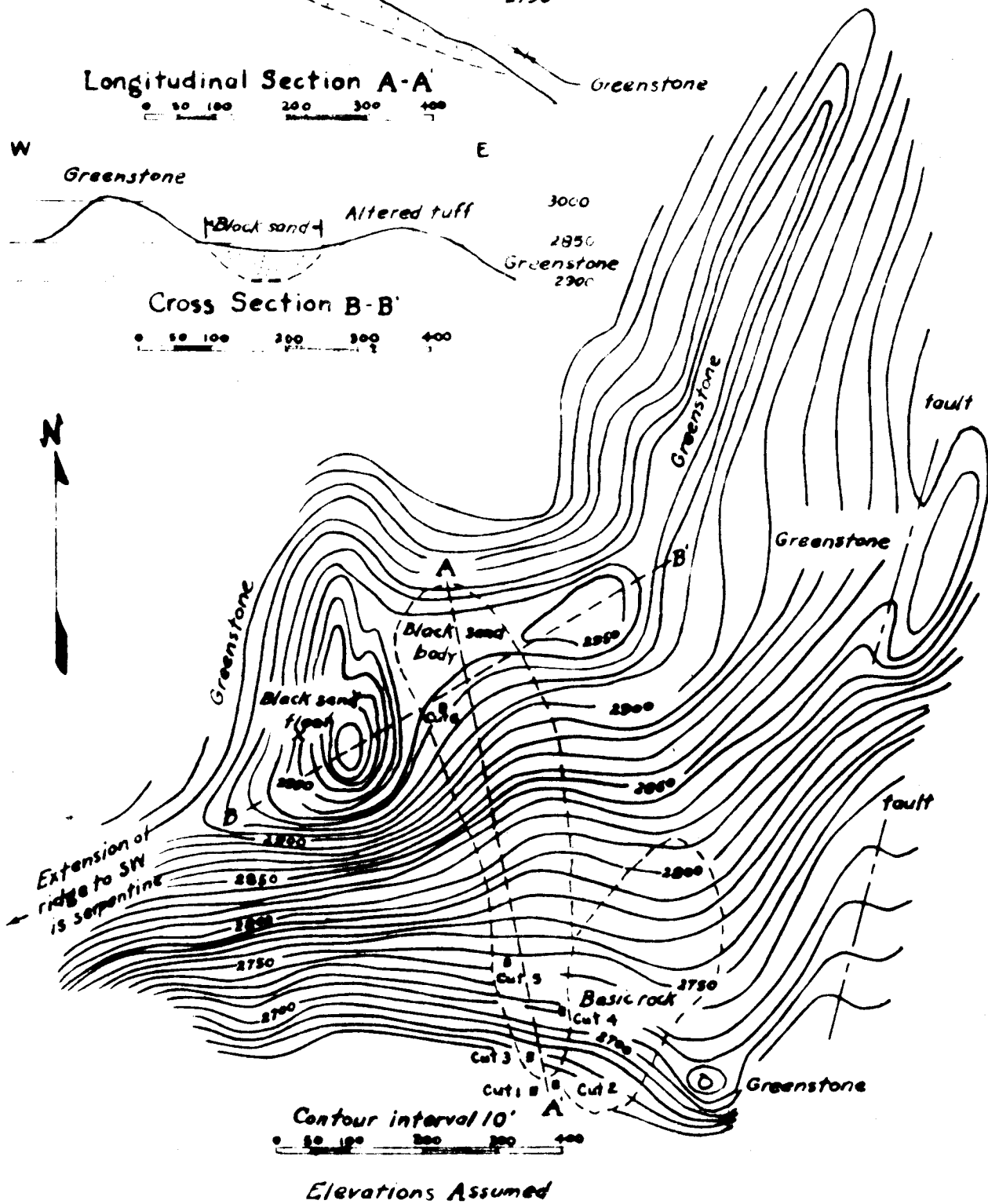
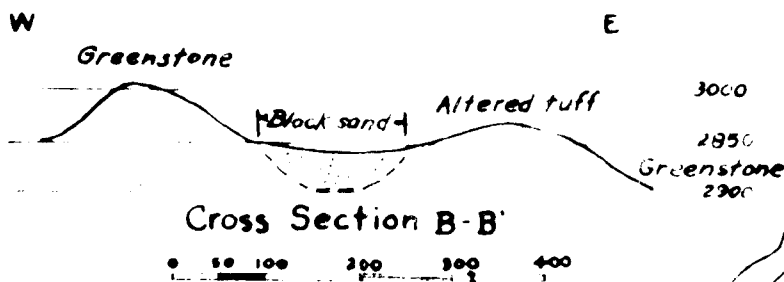
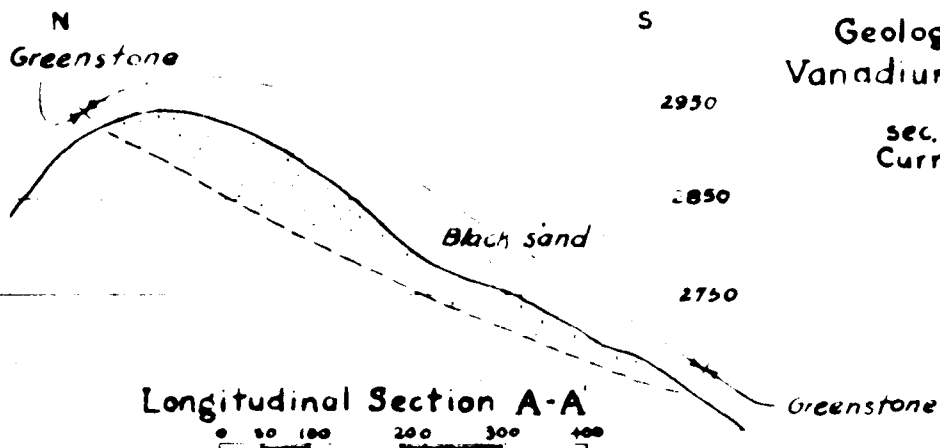
Location & Accessibility Map
of
HORSE SIGN BUTTE
VANADIUM-BEARING IRON DEPOSIT
sec 17, T. 36 S., R. 11 W.
Curry Co., Oregon

(X) Deposit



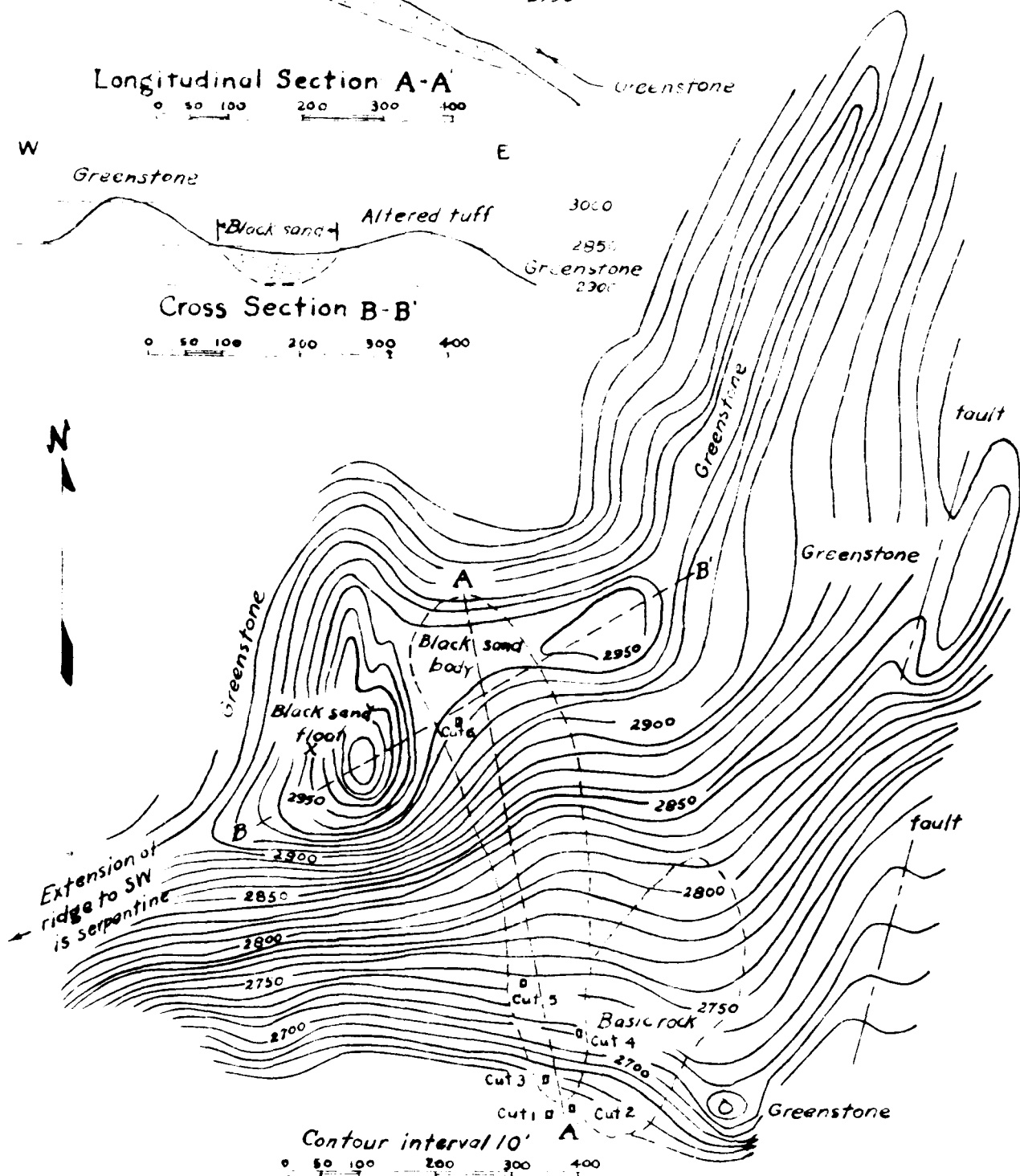
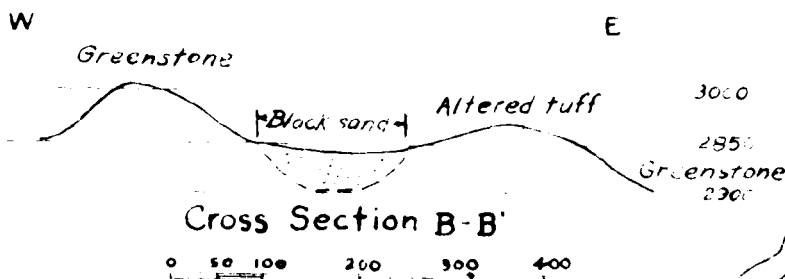
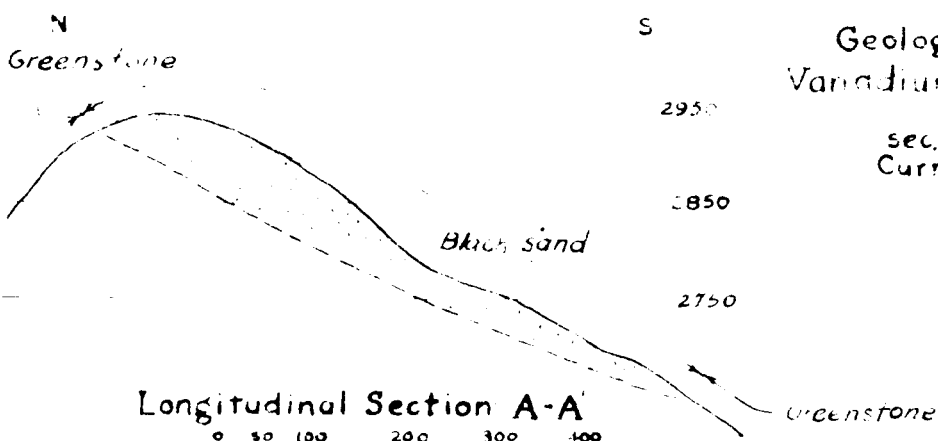
Geologic Sketch Map Vanadium-bearing Black Sand

sec. 17, T 36S, R 11W
Curry Co., Oregon



Geologic Sketch Map Vanadium-bearing Black Sand

sec. 17, T 36S, R 11W
Curry Co., Oregon



Contour interval 10'

0 50 100 200 300 400

Elevations Assumed

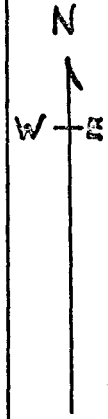
HORSE SIGN BUTTE IRON DEPOSIT

Rough sketch map
Sec. 17-T.36S., R.11W.

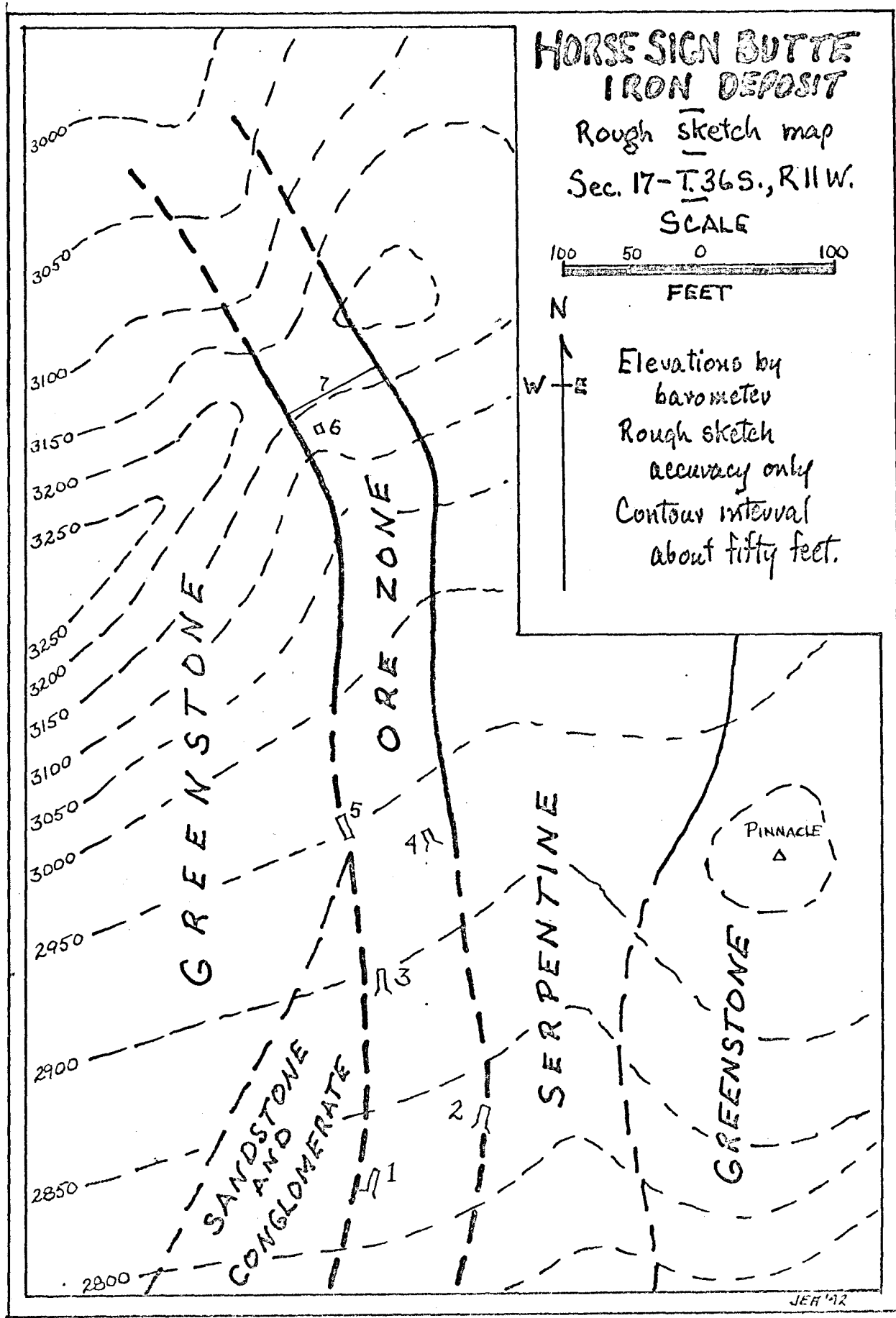
SCALE



FEET



Elevations by
barometer
Rough sketch
accuracy only
Contours interval
about fifty feet.



JEH '12

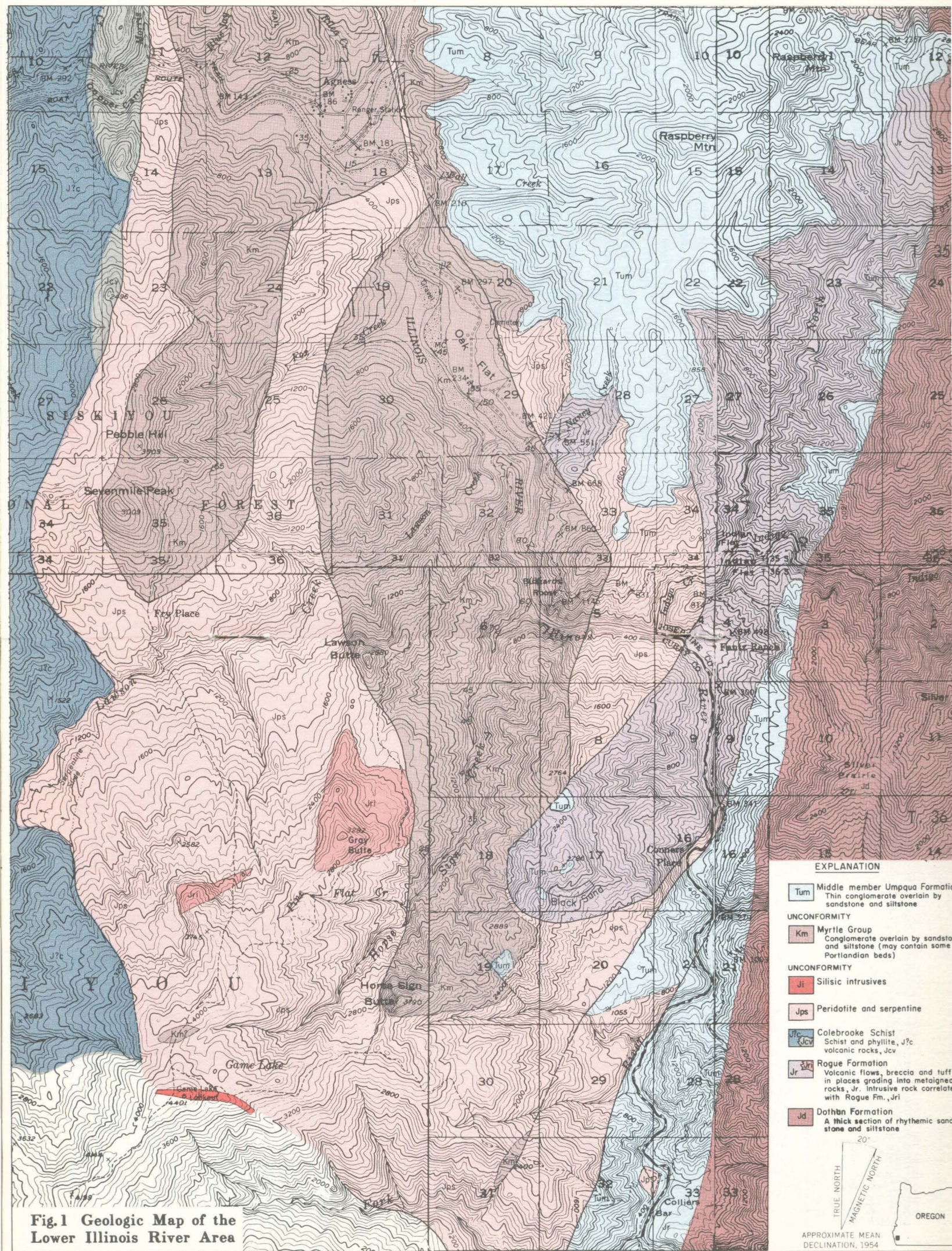


Fig.1 Geologic Map of the Lower Illinois River Area

EXPLANATION

- Tum Middle member Umpqua Formation
Thin conglomerate overlain by sandstone and siltstone
- UNCONFORMITY**
- Km Myrtle Group
Conglomerate overlain by sandstone and siltstone (may contain some Portlandian beds)
- UNCONFORMITY**
- Ji Silicic intrusives
- Jps Peridotite and serpentine
- Jc Jcv Colebrooke Schist
Schist and phyllite, Jc volcanic rocks, Jcv
- Jr Jr Rogue Formation
Volcanic flows, breccia and tuff in places grading into metaigneous rocks, Jr. Intrusive rock correlated with Rogue Fm., Jr
- Jd Dothan Formation
A thick section of rhythmic sandstone and siltstone

TRUE NORTH
MAGNETIC NORTH

APPROXIMATE MEAN DECLINATION, 1954

OREGON