

## DEPARTMENT OF PLANNING AND DEVELOPMENT

MEMORANDUM

TO: Len

DATE: 7-24-63

FROM: Harry

Thanks for the reports and the write-up. You've done well. Hollis expressed his pleasure towards the activity engendered and the formation of the Association. He believes ~~the~~ group will serve an especially useful purpose by being the spokesman for the mining side of the picture. I'll have to spend most of my time in the office for a while. Consequently I appreciate being kept

## DEPARTMENT OF PLANNING AND DEVELOPMENT

MEMORANDUM

TO:

DATE:

FROM:

informed. Get me know if I can serve some useful purpose.

Enclosed are a couple of clippings for your disposal.

GOVERNING BOARD  
MASON L. BINGHAM, CHAIRMAN, PORTLAND  
LES R. CHILD, GRANTS PASS  
NADIE STRAYER, BAKER



FIELD OFFICES:  
2033 FIRST STREET  
BAKER  
239 SOUTHEAST "H" STREET  
GRANTS PASS

STATE OF OREGON  
DEPARTMENT OF GEOLOGY AND MINERAL INDUSTRIES  
1069 STATE OFFICE BUILDING  
PORTLAND 1

June 5, 1963

Mr. Len Ramp  
State Assay Laboratory  
Grants Pass, Oregon

Dear Len:

As you know, Larry Dineen has been working with Brownie Coldiron and Robert Knox, President of the Port of Gold Beach, on sources of ballast for ships entering the Gold Beach harbor.

To date Mr. Coldiron has been grasping at straws and I fear that he needs a little information that is concrete and can be depended upon. Consequently I have suggested to Larry Dineen that he approach the Gold Beach people with the idea that they may want to hire a couple of graduate students to make evaluations of deposits in Curry County, especially within the Gold Beach area, to determine if minerals that could be used for ballast and have salable use elsewhere were present.

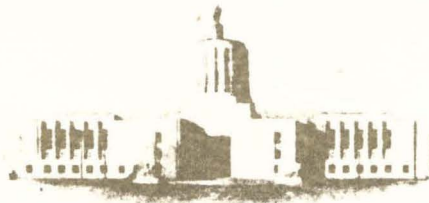
I have told them that we would be glad to supervise this job providing the Port authorities picked up the tab for the students. I am enclosing a memo from Larry Dineen in this regard and ask that you meet with the Gold Beach authorities on June 11 to discuss this possibility. I have full confidence in you and know that you will handle this in a proper fashion and you have my authority to commit the Department for assistance to such a project.

Sincerely yours,

Hollis M. Dole  
Director

HMD:jr  
cc Larry Dineen

MARK O. HATFIELD  
GOVERNOR



S. H. MALLICOAT  
DIRECTOR

STATE OF OREGON  
DEPARTMENT OF PLANNING AND DEVELOPMENT  
STATE OFFICE BUILDING  
PORTLAND

3 June 1963

MEMORANDUM

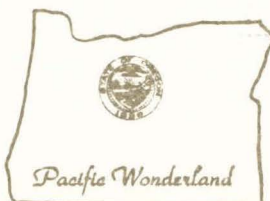
TO: Hollis Dole

FROM: Larry Dinneen

I spoke to Brownie Coldiron and Robert Knox, President of the Port of Gold Beach. They were very receptive to your idea about the port and possibly other agencies affording the pay and expenses of two graduate students in geology, supervised by Len Ramp, to update their mineral possibilities. The cost of \$1500 was suggested.

They will discuss the idea this week preparatory to a meeting on June 11 with Len Ramp, myself, members of the port and all other mining and mineral interests in the county. This will be an evening meeting and will be exploratory in nature. I informed Len of these goings on and told him I would bring you up to date in case you had any instructions you wished to relay.

LD:mjs



RECEIVED  
JUN 4 1963  
STATE DEPT. OF GEOLOGY  
& MINERAL IND.

COPY

STATE DEPARTMENT OF GEOLOGY AND  
MINERAL INDUSTRIES

1069 STATE OFFICE BUILDING  
PORTLAND 1, OREGON

April 8, 1963

Mr. Larry Dinneen  
Department of Planning & Development  
State Office Building  
Portland, Oregon

Dear Larry:

Thanks for your memo concerning Brownie Coldiron.

Mr. Libbey, former Director of the Department, and I visited Rusty Creek on the Sixes River several years back to investigate claims held by Ed Divelbiss. Although there were some interesting showings of complex ore in the area, we failed to see anything of the tonnage Coldiron reports.

I would suggest that you take this up with Len Ramp sometime in the future and request that he make an inspection for Mr. Coldiron.

Regards.

Sincerely yours,

Hollis M. Dole  
Director

HMD:jr  
cc Len Ramp

MARK O. HATFIELD  
GOVERNOR



S. H. MALLICOAT  
DIRECTOR

STATE OF OREGON  
DEPARTMENT OF PLANNING AND DEVELOPMENT  
STATE OFFICE BUILDING  
PORTLAND

4 April 1963

MEMORANDUM

TO: Hollis Dole

FROM: Larry Dinneen

While at a meeting with the Port Commission at Gold Beach, I spoke to a Brownie Coldiron, a rather successful logger in Coos and Curry Counties. He said that quite often the Japanese ships that move logs from Coos Bay to Japan have to bring ballast with them.

With this in mind, he wondered if some of the lower grade minerals available in Coos and Curry Counties could not be economically substituted for this ballast.

Coldiron says that he has under option what is reported to be 400,000 tons of mineral assayed at \$50 a ton. The minerals included in this assay were lead, gold, silver, copper and zinc. The land he has optioned is up the Sixes River near its confluence with Rusty Creek. Coldiron says that if there is only 100,000 tons and it is only worth \$20 a ton, he can still put it on the docks at Coos Bay.

I recommended that he explore this idea with you and that I would do the same. Is there any merit to his idea?

LD: jr

