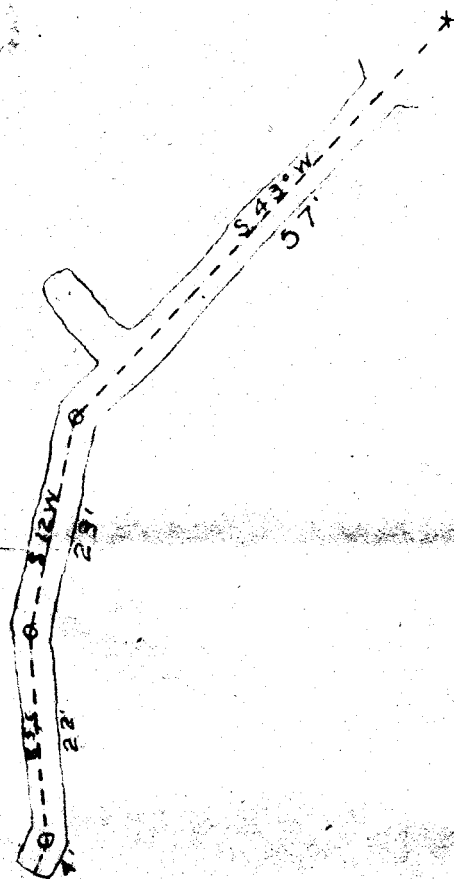


Map of
DINAWAJA PROSPECT
scale 1" = 20'
by Henry Mears, 1935



Dinawadja No 1
End line

Dinawadja
Extension

556W

50'

N36E 150'

710 on showing -

43' just a seam.

110 on showing.

drift no 2.

free gold.
chalcopyrite
pyrite.

no talc.

Dinawadja
CR

long sec. of
Tertiary H. vein.

7/29/39

dips to west.
movement foot wall
to the south. Hanging
to the North