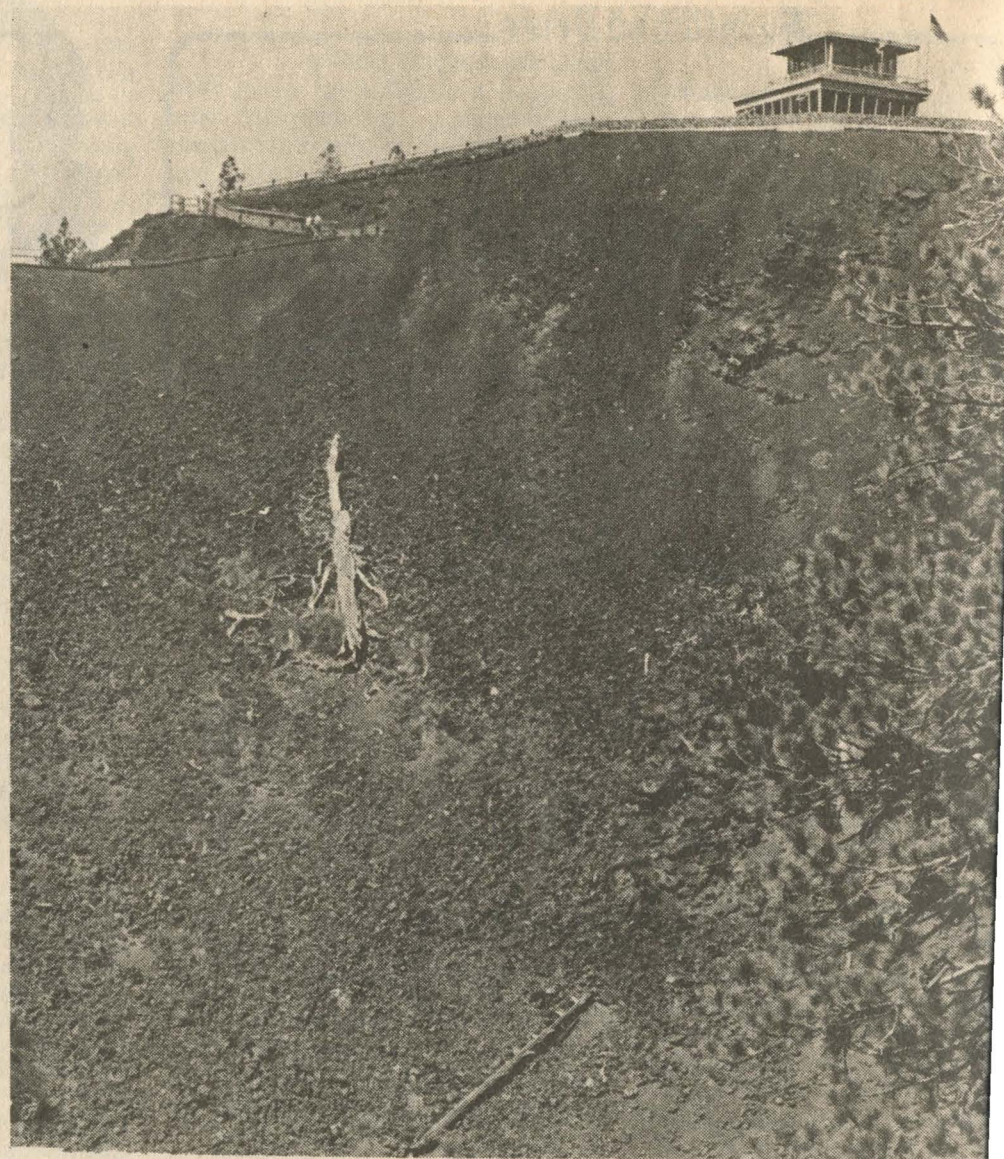


ates Co.
Journal



Lava Butte Viewpoint-Visitor Information Center allows glimpses into crater and long-distance sightings of surrounding area.

It's A 'Shook Up' Area

Story and Photos By
By LEE JUILLERAT
H&N Staff Writer

Whole lots of shaking hasn't created a heaven on earth, but it has created a landscape any moon-dweller would find familiar.

Volcanic activity in the 50-mile radius around the Lava Lands Visitor Center on Highway 97 north of Klamath Falls has created a geologically unique area. Virtually every example of volcanism, except an active volcano, is located near Lava Butte's moonlike landscape.

Newberry Crater, Lava Cast Forest, Lava River Cave and Lava Butte are some of the volcanic remnants that supplement and complete stories of earth movement told at Crater Lake National Park, Lava Beds National Monument and other Klamath Basin sites.

It's at Lava Butte, location of the Deschutes National Forest Lava Lands Visitor Center, the overall geological story is explained.

Rising about 500-feet above the adjacent high and forest-covered country, the Lava Butte summit allows spectacular views of lands far and near. Most noticeable are the snow-covered peaks of the Cascade Mountains. Besides the Three Sisters, Mt. Washington, Three-Fingered Jack and Mt. Jefferson, the distant Mt. Hood — 102 miles north — is visible on even smoggy days.

Distant views aren't the only sights.

Cutting 150 feet below Lava Butte's peak is a volcanic crater while reaching west and north is the awesome, moonlike lava field spreading over 6,117 acres.

Not visible from Lava Butte, but only a few miles distant is Lava River Cave State Park. Gasoline-powered lanterns can be rented for 25 cents at the cave entrance. They're necessary if hikers plan to go into

the mile-long tunnel-like lava tube. It's a cave unlike those found in the Lava Beds region.

Located 40 feet underground, it goes beneath Highway 97 until volcanic sand chokes it off.

Because cave temperatures stay near 40 degrees its cool recesses were used by early day hunters, who discovered the cave, for storing deer meat.

Lava River is the area's most easily visited lava tube. Several other caves are signed and located on Forest Service roads east of Highway 97, but hikers must provide their own lights and be ready for more rugged walking conditions.

Newberry Crater, about 33 miles southeast of Lava Butte, is what remains of Mt. Newberry, a companion mountain of Mt. Mazama. The old mountain was a broad shield volcano that rose about 9,000 feet high. Lava leakage on its lower slopes about 10,000 years ago resulted in Mt. Newberry draining and collapsing.

Within the crater are two large lakes, East and Paulina, with resorts and campgrounds. Along the outer slopes are about 200 parasite cones. According to geologists, Newberry is not extinct, but is a dormant volcano that may have future volcanic activity.

Future shaking from Newberry isn't necessary for visitors to sample volcanic activity.

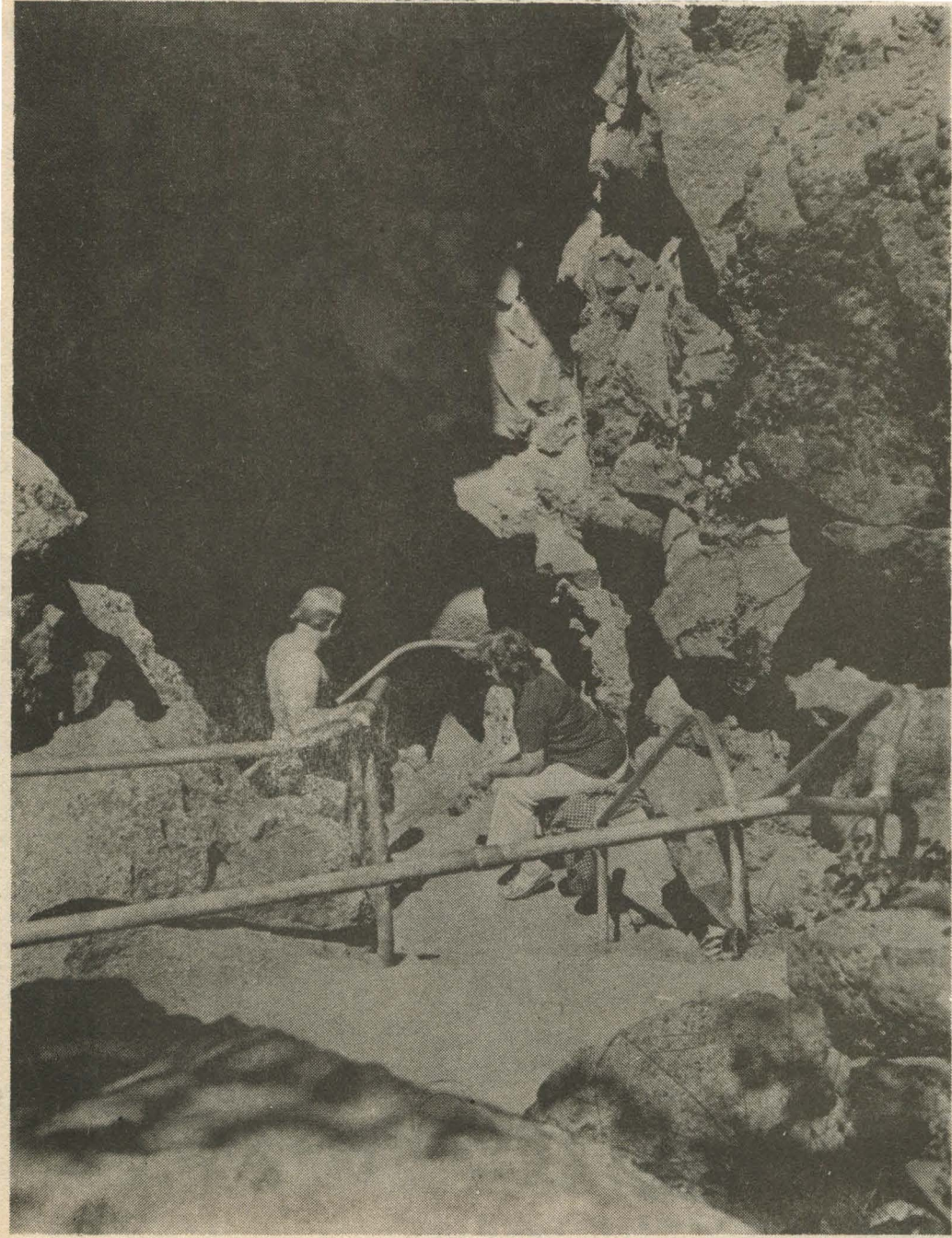
Lacking immediate prospects for continued eruptions, the Lava Lands Visitor Center has a self-guiding display-slide show complete with ground movements that might be experienced during volcanic activity. The area's geologic and human activity is displayed at the series of unusual stopping points.

Two easy to hike trails start near the visitor center while another goes around Lava Butte's rim. Trails are also located in Newberry Crater, the Lava Cast Forest and nearby geological areas.

Further information is available by writing the Lava Lands Visitor Information Center, Deschutes National Forest, 211 N.E. Revere, Bend 97701.



Map outlines volcanic-geological areas near Lava Butte



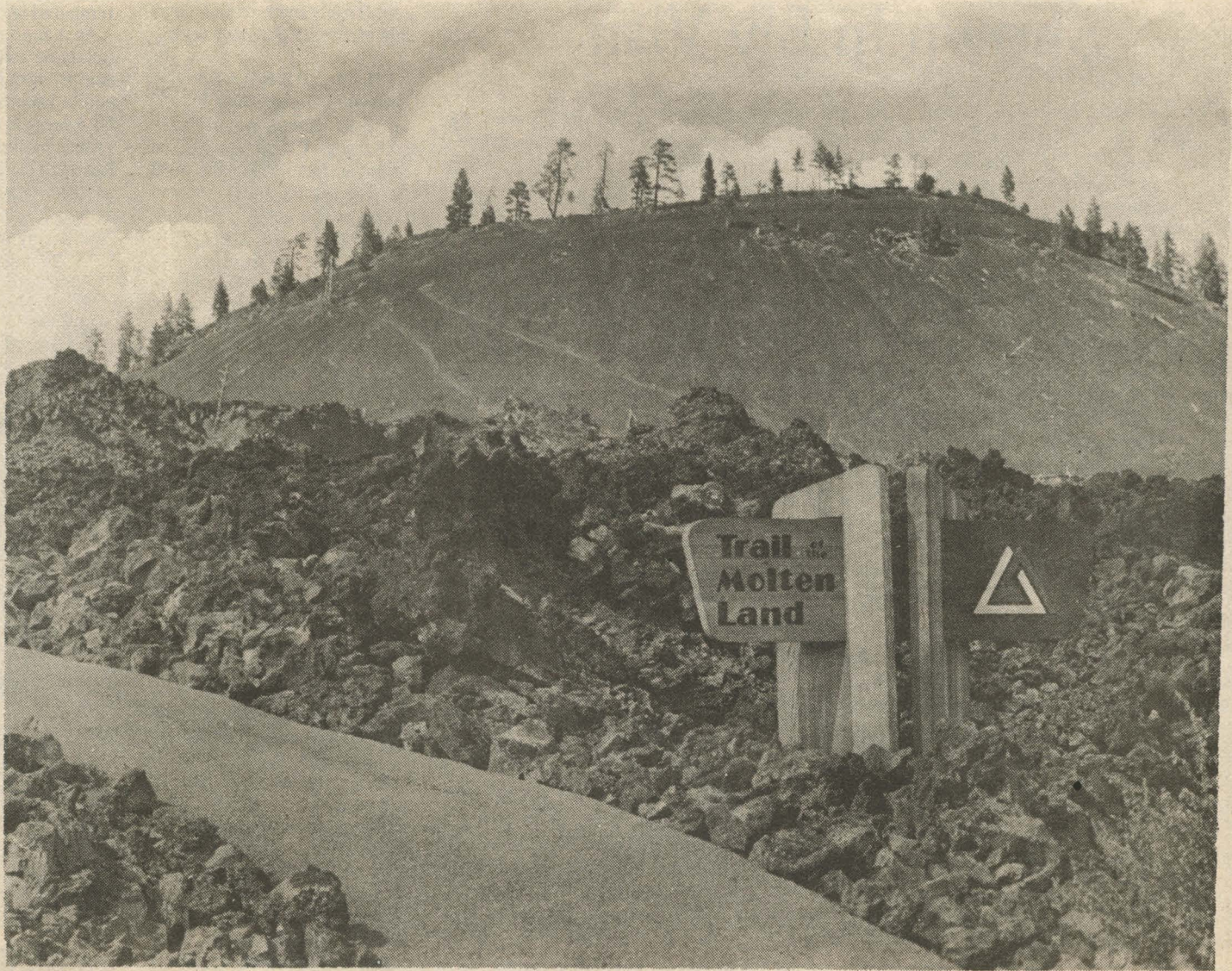
Lava River Cave visitors rest before dropping into chilly lava tube

Herald and News

PAGE 33

Klamath Falls, Ore.

Sunday, Aug. 8, 1976



Trail of the Molten Land is an easy walker through a lava field adjacent to humpbacked Lava Butte