



RECORD IDENTIFICATION

RECORD NO..... M055187
 RECORD TYPE..... X1M
 COUNTRY/ORGANIZATION. USGS
 MAP CODE NO. OF REC..

REPORTER

NAME..... BERGQUIST, JOEL R.
 DATE..... 73 08
 UPDATED..... 81 03
 BY..... FERNS, MARK L. (BROOKS, HOWARD C.)

NAME AND LOCATION

DEPOSIT NAME..... BONANZA MINE

MINING DISTRICT/AREA/SUBDIST. BONANZA AREA

COUNTRY CODE..... US
 COUNTRY NAME: UNITED STATES

STATE CODE..... OR
 STATE NAME: OREGON

COUNTY..... DOUGLAS
 DRAINAGE AREA..... 17100303 PACIFIC NORTHWEST
 PHYSIOGRAPHIC PROV..... 13 COAST RANGE
 LAND CLASSIFICATION..... 01

QUAD SCALE QUAD NO OR NAME
 1: 62500 GLIDE (1954)

LATITUDE LONGITUDE
 43-23-40N 123-10-57W

UTM NORTHING UTM EASTING UTM ZONE NO
 4804425. 485225. +10

TWP..... 025S
 RANGE..... 004W
 SECTION.. 16
 MERIDIAN. WILLAMETTE

ALTITUDE.. 1200 FT

POSITION FROM NEAREST PROMINENT LOCALITY: 8 MILES E OF SUTHERLYN

LOCATION COMMENTS: SW/4 SEC 16

COMMODITY SPECIALIST INFORMATION:

HG

ORE MATERIALS (MINERALS, ROCKS, ETC.):

CINNABAR, NATIVE MERCURY, METACINNABAR

MAIN ORE MINERALS:

CINNABAR, NATIVE MERCURY, METACINNAR, MARCASITE FE OXIDES, AS AND SB SULFIDES, SIDERITE

EXPLORATION AND DEVELOPMENT

STATUS OF EXPLOR. OR DEV. 6
 PROPERTY IS INACTIVE
 YEAR OF DISCOVERY..... 1865 - 1870
 NATURE OF DISCOVERY..... B
 YEAR OF FIRST PRODUCTION. 1937
 YEAR OF LAST PRODUCTION. 1960
 PRESENT/LAST OWNER..... CLIFFORD BRYDEN
 PRESENT/LAST OPERATOR.... BDNANZA OIL AND MINES CORP.

EXPLOR. AND DEVELOP. COMMENTS:

EXPLORATION UNDER DMEA LOAN CONTRACT IN 1953-1958

DESCRIPTION OF DEPOSIT

DEPOSIT TYPES:

MINERALIZED SHEAR ZONE

FORM/SHAPE OF DEPOSIT: IRREGULAR LENSES

SIZE/DIRECTIONAL DATA

SIZE OF DEPOSIT..... MEDIUM
 MAX LENGTH..... 3000 FT
 MAX WIDTH..... 1600 FT
 MAX THICKNESS..... 60 FT
 STRIKE OF OREBODY.... N 20 E
 DIP OF OREBODY..... 45 SE

COMMENTS(DESCRIPTION OF DEPOSIT):

ORE LENSES RANGED FROM 3 TO 60 FT IN MAX. THICKNESS

DESCRIPTION OF WORKINGS

DEPTH OF WORKINGS BELOW SURFACE. 900 FT
 LENGTH OF WORKINGS..... 20000(?) FT
 OVERALL LENGTH OF MINED AREA.... 3200 FT
 OVERALL WIDTH OF MINED AREA..... 1200 FT

COMMENTS(DESCRIP. OF WORKINGS):

WORKINGS EXTEND FROM SURFACE TO INCLINED DEPTH OF 1600 FT. LEVELS ARE SPACED FROM 70 TO 130 FT APART

ANNUAL PRODUCTION (DRE, COMMOD., CONC., OVERBURD.)

ITEM	ACC	AMOUNT	THOUS. UNITS	YEAR	GRADE, REMARKS
1 HG	EST	0001.700	FL		P/YEAR 7 - 8 LB/TON

CUMULATIVE PRODUCTION (DRE, COMMOD., CONC., OVERBURD.)

ITEM	ACC	AMOUNT	THOUS. UNITS	YEAR	GRADE, REMARKS
15 HG	ACC	0039.488	FL	TO 1963	7 - 8 LB/TON

PRODUCTION YEARS..... 1887 , 1937 - 1949 , 1951 - 1960

SOURCE OF INFORMATION (PRODUCTION).. BROOKS

PRODUCTION COMMENTS.... POTENTIAL RESOURCES ARE MAINLY IN DEEPER LEVELS OF MINE

RESERVES ONLY

ITEM	ACC	AMOUNT	THOUS. UNITS	YEAR	GRADE OR USE
1 HG	EST	0081.200	TONS		

POTENTIAL RESOURCES (EXCLUSIVE OF RESERVES)

ITEM	ACC	AMOUNT	THOUS. UNITS	YEAR	GRADE OR USE
1 DRE HG	EST	00000300	FL	1978	BETWEEN 1 AND 3 LBS HG/TON

COMMENTS (POT RESOURCES).. H. C. BROOKS, DDGMI, FILES

GEOLOGY AND MINERALOGY

AGE OF HOST ROCKS..... EOCENE
 HOST ROCK TYPES..... TUFFACEOUS SANDSTONE, ARKOSIC SANDSTONE, SILTSTONE

AGE OF MINERALIZATION..... LATE TERT

PERTINENT MINERALOGY..... CHALCEDONY, QUARTZ, CALCITE , SIDERITE, CLAY MINERALS, PYRITE, MARCASITE, AS AND SULFIDES, LIMONITE

IMPORTANT ORE CONTROL/LOCUS.. BEDDING PLANE SHEAR ZONE IN SANDSTONE. ORE ZONE IN UPPER LEVELS OF THE MINE IS CAPPED BY SHALE UNIT

GEOLOGICAL DESCRIPTIVE NOTES. UMPQUA FM SEDS, TUFFS, BASALTS DIP SE.

GEOLOGY (SUPPLEMENTARY INFORMATION)

REGIONAL GEOLOGY

MAJOR REGIONAL STRUCTURES.. ORE ZONE IS ON THE EAST FLANK OF A BROAD ANTICLINE STRIKING N 25 E AND DIPPING 45

STATE DEPARTMENT OF GEOLOGY AND MINERAL INDUSTRIES

Head Office: 702 Woodlark Building, Portland 5, Oregon

State Governing Board

Niel R. Allen, Chairman, Grants Pass
H. E. Hendryx Baker
Mason L. Bingham Portland
F. W. Libbey, Director

Staff

Hollis M. Dole Geologist
L. L. Hoagland Assayer & Chemist
C. W. F. Jacobs Ceramist
Ralph S. Mason Mining Engineer
T. C. Matthews Spectroscopist
M. L. Steere Geologist
R. E. Stewart Geologist
D. J. White Geologist

Field Offices

2033 First Street, Baker
N. S. Wagner, Field Geologist

717 East "H" Street, Grants Pass
Harold D. Wolfe, Field Geologist

FAMOUS QUICKSILVER MINE FINISHED

The Bonanza mercury mine near Sutherlin, Douglas County, Oregon, closed down early in December 1949, and it is most unlikely that it will ever be reopened even if a war emergency should come. Its closing is a sign of the times and a warning. The Bonanza served the country well during World War II by producing a large quantity of a critical war mineral. The peak of production came early in the war period when the metal was most needed, and Bonanza became one of the largest domestic producers. Imports were interrupted and the country found itself wholly dependent upon domestic production. Later, when the United States became involved, several government agencies frantically urged peak production, in the interest of national survival. In order to get this maximum production, development work was neglected. Neglect of development work at a mine is suicidal, and Bonanza thus suffered along with most other metal mines in responding to war needs. The direct cause of the passing of Bonanza, however, is the low market price of mercury in relation to the high cost of operation in this country. The low market price is caused by the large quantity of imports produced at a cost with which our mines cannot compete. Revaluation of European currencies was a contributing factor. Measured in comparative purchasing power of the dollar down through the years, the price of mercury in this country is the lowest on record.

The history of Bonanza goes back to the early days of Oregon mining. Probably the mine was discovered in 1865, about the same time as the Nonparail mine in the same district. Old workings and the remains of an old Scott furnace are evidence of early-day activity, but there is no historical record of work or production during that time. In 1928 the quicksilver industry in Oregon received a stimulant in the successful operation of the Black Butte mine south of Cottage Grove together with the strengthening of the mercury market. The price had increased substantially and averaged about \$123 per flask for the year. Records show that the Bonanza mine was then held by J. W. Wenzel, F. S. Skiff, and C. Scherer. The mine was examined and reportedly disclosed a large tonnage of low-grade ore. The Northwestern Quicksilver Company, of which Wenzel was the manager, obtained control in 1931. Development work was done but no plant was installed because of the depressed state of industry in general. H. W. Gould & Company was reported to have done development work in 1934. In 1935 Wenzel sold out his interest to H. C. Wilmot, who became a leading figure in subsequent development and production at the property. In 1937 Wilmot installed a Herreshoff furnace and production was begun in the fall of that year in a plant designed by C. N. Schuette of San Francisco. At about this time, new ore of good grade and width was developed and value of the furnace heads increased. A new Gould rotary furnace was added to the plant in 1940 and after this furnace got into production, the rate of output was about 500 flasks a month, which made Bonanza one of the two largest producers of the country.

The discovery and development of the ore bodies, together with the increased unit value of the ore fed to the furnace, came at a time when demand for mercury in this country seemed insatiable. The market price had been rapidly increasing since 1937 because of the war clouds in Europe and the piling up by European governments of stockpiles of all war minerals including mercury. Market price rose from \$90 a flask in 1937 to more than \$200 in 1940. A ceiling of \$196 a flask was finally placed on the metal by OPA.

Bonanza experienced many operating difficulties during the war. Labor was difficult to obtain and more difficult to keep. War Labor Board policies fixed wages that could be paid to miners, and at the same time wages at shipyards in Portland as well as in logging camps were in excess of those allowed the mines. With an inadequate labor force and with the great demand for production, development work as stated above was neglected and reserves were depleted. Production, however, was maintained as long as the great demand upon domestic mines lasted.

In 1943 imports of mercury began to come into the United States in record quantity. The submarine menace had been largely overcome and supplies of European quicksilver, as well as newly developed Canadian production, became readily available to this country. A large surplus was accumulated; therefore, in January 1944, the government removed its price support and the price dropped quickly from \$196 to \$130 a flask. Subsequently there were minor fluctuations but the general price trend was downward. It is now about \$71 a flask.

Operating costs rose along with general reduction in market price. It soon became evident that unless some assistance was given by the government, the quicksilver industry would fade out of the picture. There was considerable talk in Congress about protecting our strategic minerals industry; incentive legislation of one kind or another was proposed, but sufficient interest was lacking. Our national policy appeared to concentrate on giving aid to European industry, leaving our own mines to shift for themselves. The aid to Europe has included bringing in large supplies of quicksilver far in excess of domestic consumption. For example, during the first ten months of 1949 imports totaled nearly 98,000 flasks. Consumption was at the annual rate of about 30,000 flasks, and during the first nine months production was at an annual rate of about 9,000 flasks. Under such conditions the chances of a price which would allow profitable operation of a domestic mercury mine were nil.

One after another of the mines which operated during the war had closed down, leaving in 1949 two, the Bonanza and the Mt. Jackson in Sonoma County, California, still plugging along hoping for a break. (The Cordero mine in northern Nevada started up in October 1949 but closed down during December.) At this writing, only the Mt. Jackson mine (including the Great Eastern) is producing, and it seems likely that its demise is only a matter of months.

As long as we remain at peace - a condition devoutly hoped for - the closing of an underground strategic mineral mine is only of local importance; but as has been stated over and over again, if we have another war a huge supply of all strategic metals would be essential to our survival. Imports would be cut off for an indefinite period. Nobody knows Russia's force in submarines or how long a blockade would last and how efficient it would be, but it is certain that such a blockade would strike quickly, probably without any warning. Then our strategic mineral supplies would be dependent upon two sources, our national stockpile and our domestic mines. The stockpile should be enormous in the category of minerals that we cannot readily produce from our domestic mines if it is to tide us over. Quicksilver mines that have been closed down for any length of time cannot be reopened and put into production quickly. This situation is realized by mine operators but is not understood by the public at large and probably not by many Congressmen. As for the State Department, it seemingly does not care. It is concerned wholly with foreign affairs. Domestic matters are the worry of Congress and some government bureaus.

During several years immediately preceding World War II many persons qualified by training and experience cried out against our lack of preparedness in failing to accumulate large stocks of critical war materials, especially those in which the United States was and is deficient. The cries went practically unheeded. The war came and we found ourselves short of many of these materials upon which prosecution of a war was absolutely dependent - notably tin, chromite, manganese, tungsten, antimony, bauxite, mercury, and quartz crystal. We then had to rely on domestic production of most of these minerals to tide us over until they could be safely imported in quantity. Another war would probably not allow us time to get production out of closed-down mines such as the Bonanza.

Preparedness lessons of World War II ought to be fresh and deeply imprinted in the minds of our leaders, and it would seem to be, as before the last war, only modest insurance to maintain a nucleus of a strategic minerals industry. The expense would be so small measured in terms of the security obtained.

National stockpile information is secret; therefore, the public is ignorant of the amount of strategic mineral supplies available for an emergency. However, the matter of encouraging foreign producers of minerals at the expense of our own producers is an open book for anyone who wishes to read. Domestic producers of mercury, tungsten, antimony, and chromite have practically passed out of the industrial picture because of lowering of tariffs and encouragement of imports. Unless and until huge supplies are built up in our national stockpile, our security is in danger.

This national picture has another angle - that of local conditions of employment in some of the mining regions of the West. These conditions seemingly have no weight in the plans of those who form and direct our foreign policy.

Bonanza's passing may be just another tiny incident in the national picture but it is not so tiny to people in Oregon who not only see it as adding to unemployment but also recognize it as another sign of the approaching death of the country's strategic minerals industry.

F.W.L.

SALEM PLANT SOLD TO MANGANESE PRODUCTS, INC.

According to West Coast edition of the Iron Age, December 22, 1949, the alumina-from-clay plant at Salem, Oregon, has been purchased by Manganese Products, Inc., from the War Assets Administration for \$750,000. Reportedly the plant will start producing manganese concentrate from low-grade domestic ores beginning early in 1950. President of the company is John R. Allen, Seattle. Dr. R. W. Moulton, Associate Professor of Chemical Engineering, University of Washington, is a technical director of the firm.

Professor Moulton has informed the Ore.-Bin that the process which will be used by this firm involves the acid leaching of low-grade manganese ore with a sulfurous acid solution. The manganese dioxide in the ore oxidizes the sulfur dioxide in the leach solution to sulfuric acid. This acid solution is then partially neutralized by the addition of ammonia. This neutralization results in the precipitation of the dissolved impurities iron, alumina, and silica.

The purified leach solution containing manganous sulphate and ammonium sulphate is then treated with additional ammonia and air for oxidation. This treatment results in the precipitation of a hydrated manganese dioxide. The resulting solution contains principally ammonium sulphate which will be recovered as a commercial by-product.

INSTITUTE OF NORTHWEST RESOURCES

The second annual Institute of Northwest Resources will be held on the Oregon State College campus June 19-30, 1950. Teachers, graduate students, and others interested in natural resource studies, conservation and development are invited to include the Institute session in their summer plans.

A number of scholarships will be available for those who are deserving of assistance. School superintendents, Chambers of Commerce, and civic organizations, as well as government agencies, are urged to send delegates. Credits in the graduate School of Science may be earned by students enrolling in the Institute. The fee for the Institute alone is \$14. For information concerning all details address Professor J. Granville Jensen, Department of Geography, Oregon State College, Corvallis.

METAL MARKETS

According to E&MJ Metal and Mineral Markets, January 12, 1950, demand for the principal nonferrous metals continues fairly active. Zinc was somewhat unsettled because one producer continued to offer the metal at 9 3/4 cents a pound, while others held their metal at 10 cents. The American Zinc Institute reported December production of slab zinc at 71,096 tons compared to 65,055 tons for November. Stocks increased 4,945 tons to 93,964 tons. Production of Special High Grade was 17,750 tons in December as against 14,595 tons in November. Output of this grade was somewhat limited by the strike at the New Jersey Zinc Company's smelter.

Demand for lead was fair. Sales for the week amounted to 5,930 tons. Undertone of the market was steady to firm. Market price was maintained at 12 cents New York.

Demand for copper was fairly strong for January and February delivery. January copper sales contracts involved 91,000 tons. An order for 5,000 tons for Italy was placed on January 5. The price continued at 18 1/2 cents Connecticut Valley, although there is some nervousness over the price outlook for February.

The price of Grade A quality tin was reduced 1/2 cent per pound by RFC on January 9. Grade A tin is available at 77 cents per pound in the outside market.

Quicksilver was quoted at \$71-73 per flask with some metal available at \$70.

Foreign silver continued at 73 1/4 cents an ounce troy. The price of domestic silver is fixed by law at 90.5 cents.

Antimony metal is quoted at 32 cents a pound in bulk f.o.b. Laredo, Texas. Antimony ore per unit of antimony contained, 50-55 percent, \$2.50-2.60; 58-60 percent, \$2.60-2.70; 60-65 percent, \$2.70-2.80.

Chrome ore per long ton, dry basis, f.o.b. cars New York, Philadelphia, Baltimore, Charleston, plus ocean freight differential for deliveries to Portland, Oregon, and Tacoma, Washington, Indian and Rhodesian, 48 percent Cr₂O₃, 3 to 1 chrome-iron ratio, \$37.50; 48 percent Cr₂O₃, 2.8 to 1 chrome-iron ratio, \$35; South African, 48 percent Cr₂O₃, no ratio, \$26; Turkish, 48 percent Cr₂O₃, 3 to 1 chrome-iron ratio, \$38-39; Brazilian, 44 percent Cr₂O₃, 2.5 to 1 chrome-iron ratio, lump, \$32; domestic, 48 percent Cr₂O₃, 3 to 1 chrome-iron ratio, \$39 f.o.b. nearest shipping point.

Manganese ore long term contracts, prices a matter for negotiation. Nearby business basis 48 percent Mn, 81.8-83.8 cents per long ton unit c.i.f. United States ports, duty included.

Tungsten ore per short ton unit of WO₃ for ore of known good analysis, Chinese duty paid New York, \$17.50-18.00; Brazilian, Bolivian, etc., duty paid, same price.

STATE DEPARTMENT BULLETIN HELPS IN CIL SEARCH

The search for oil in Oregon, which has been conducted without success for several decades, will get an assist from a report just issued by the State Department of Geology and Mineral Industries. Petroleum geologists depend on fossils to tell them the ages of the rocks which they map on the surface and penetrate by drilling. Some of these, called Foraminifera, are so minute as to require microscopic study. The bulletin just released contains descriptions and

drawings of many Foraminifera, and also includes a study of larger nonmicroscopic molluscan fossils. By comparing fossils from rocks of unknown geologic age with such published records of fossils whose ages have been determined, it is possible to determine the geologic ages of the unknown rocks.

Foraminifera from areas near Eureka, California, Toledo, Oregon, and Grays Harbor, Washington, are described. The California and Washington localities were studied because they contain the key to fossil-bearing formations in Oregon. The report, written jointly by the late Dr. Joseph A. Cushman, geologist with the U.S. Geological Survey, Roscoe E. Stewart, geologist with the State Department of Geology and Mineral Industries, and Katherine C. Stewart, Portland micropaleontologist, is issued as Bulletin 36, parts VI-VIII. It contains 95 pages, 5 plates illustrating the Foraminifera described, 3 maps, 4 charts, and 1 table. It may be obtained at the Portland office at 702 Woodlark Building and at the field offices at Baker and Grants Pass. Price is \$1.25.

GEOGRAPHIC NAMES

The following list of geographic names has been approved by the U.S. Board on Geographic Names of the Department of the Interior. The first seven names appeared in the Board's Decision List for April 1949, and the remaining two were contained in their list published in October 1949.

Oregon

- Bastendorff Beach: beach about 1 mile long extending northeastward from Yoakam Point to the entrance to Coos Bay; named for Emil Bastendorff, who homesteaded in the vicinity; Coos County; sec. 3, T. 26 S., R. 14 W., Willamette meridian, 43°20'37"N., 124°21'00"W. Not: Bassendorf Beach, Bastendorf Beach.
- Hinton Point: point on the south shore of Yaquina Bay on the west side of King Slough; named for Rowland B. Hinton, an Oregon pioneer who lived in the vicinity; Lincoln County; sec. 16, T. 11 S., R. 11 W., Willamette meridian, 44°36'52"N., 124°01'34"W. Not: Idaho Point, Point Virtue, Virtue Point.
- King Slough: inlet about 1.5 miles long, opening into Yaquina Bay west of Yaquina River; named for Jack King, who homesteaded in the vicinity; Lincoln County; secs. 16, 21, and 28, T. 11 S., R. 11 W., Willamette meridian, 44°36'42"N., 124°01'30"W. Not: Hoxies Cove, Hoxie's Cove, King's Slough.
- McCaffery Slough: stream about 1.7 miles long, heading in sec. 4, T. 12 S., R. 11 W., and flowing northward to enter the Yaquina River, opposite Oneatta Point; named for a pioneer settler who lived near the slough; Lincoln County; sec. 34, T. 11 S., R. 11 W., Willamette meridian, 44°34'45"N., 124°01'03"W. Not: Johnson Slough, McCafferys Slough.
- Oneatta Point: point on the north bank of the Yaquina River about 2 miles above its mouth; Lincoln County; sec. 27, T. 11 S., R. 11 W., Willamette meridian, 44°35'10"N., 124°01'00"W. Not: Idlewild Point.
- Wendts Island: island about 0.5 of a mile long, located in Multnomah Channel about 3 miles east-northeast of Scappoose; named for an early settler; Columbia County; secs. 4 and 9, T. 3 N., R. 1 W., Willamette meridian, 45°46'N., 122°49'W. Not: Watts Island.
- Yoakam Point: point about 1 mile southwest of Coos Head and the entrance to Coos Bay; named for John Yoakam, who settled in Coos County in the early 1850's; Coos County; sec. 4, T. 26 S., R. 14 W., Willamette meridian, 43°20'36"N., 124°21'33"W. Not: Yokam Point.
- Hiack Creek: stream about 2.5 miles long, heading about 3 miles southwest of Dolph, sec. 8, T. 6 S., R. 9 W., and flowing northeastward to the Little Nestucca River about 1.5 miles south of Dolph, Siuslaw National Forest; the name is from that of the Hiack Ranger Station, formerly located near the mouth of this creek; Tillamook County; sec. 4, T. 6 S., R. 9 W., Willamette meridian, 45°05'00"N., 123°47'25"W.

Horton Pass: gap in the Wallowa Mountains about 1.5 miles northwest of Eagle Cap, in Wallowa and Whitman National Forests; named for the late F. V. Horton, a forester of the Pacific Northwest; Wallowa County; sec. 33 (unsurveyed), T. 4 S., R. 44 E., Willamette meridian, 45°10'30"N., 117°19'30"W.

SOUTH SLOUGH MINE ELECTRIFIES

The South Slough mine, operated by Leonard H. Gibbs of Coquille, Oregon, is installing coal mining equipment purchased from the Southport mine which ceased operations in 1948. Equipment at the Southport mine was sold at a foreclosure sale for taxes last spring and included a large air compressor, two coal-cutting machines, electric motors, pumps, coal cars, rails, and wiring. The South Slough mine has been worked by Mr. Gibbs since 1944 when he leased the property from H. G. Kern, Mrs. Otto Schetter, Groth, and J. S. and M. C. Getty. The property is located at the head of South Slough in the S $\frac{1}{2}$ sec. 2, T. 27 S., R. 14 W., in Coos County. Prior to Gibbs' activity at the South Slough there was an earlier operation in the vicinity which was called the Schetter or McKenna mine.

The State Department of Geology and Mineral Industries surveyed an area totaling 250 acres surrounding the mine, as part of its Coos County coal survey in 1944. In addition to the mapping, the outcrop of the coal was traced ~~for~~ over 5000 feet by means of open cuts, short tunnels, and hand-auger holes. Analysis of the coal by the Department showed: ash, 7.20 percent; moisture, 22.59 percent; B.t.u., 8,704 on an "as received" basis.

The mine is reached by a gravel road known as the Krome Road approximately 9 miles in length, which leaves the Coast Highway (U.S. 101) a few miles north of Coquille near the site of the former Defense Plant Corporation chrome concentrating plant built during World War II.

The South Slough vein is thought to be a thinner portion of the Beaver Hill bed lying in a down-dropped fault block. The Beaver Hill bed was formerly worked by the Southern Pacific Company at a mine located at Beaver Hill, a long-since vanished settlement. This mine extended to a depth of more than 1400 feet below sea level before it was abandoned in 1923.

THE HEAVY ELEMENTS

<u>Element</u>	<u>Symbol</u>	<u>Atomic Weight</u>	<u>Element</u>	<u>Symbol</u>	<u>Atomic Weight</u>
Curium	Cm	242	Polonium	Po	210
Americium	Am	241	Bismuth	Bi	209
Neptunium	Np	239	Lead	Pb	207
Plutonium	Pu	239	Thallium	Tl	204
Uranium I	U	238	Mercury	Hg	200
Thorium	Th	232	Gold	Au	197
Protoactinium	Pa	231	Platinum	Pt	195
Actinium	Ac	227	Iridium	Ir	193
Radium	Ra	226	Osmium	Os	191
Virginium	Vi	224	Rhenium	Re	186
Radon	Rn	222	Tungsten	W	184
Alabamine	Ab	221	Tantalum	Ta	180

On January 19, 1950, the Associated Press carried the announcement of the discovery at the University of California of a new element, the heaviest known. It has tentatively been named Berkelium.

PUBLICATIONS*

Oregon Department of Geology and Mineral Industries
702 Woodlark Building, Portland 5, Oregon

BULLETINS**

	Price postpaid
1. Mining laws of Oregon, 2d rev., 1948, contains Federal placer mining regulations	\$ 0.25
2. Progress report on Coos Bay coal field, 1938: F. W. Libbey	0.10
3. Geology of part of the Willowa Mountains, 1938: C. P. Ross	0.50
4. Quicksilver in Oregon, 1938: C. N. Schuette	0.50
8. Feasibility of steel plant in lower Columbia area, rev. ed., 1940: R. M. Miller	0.40
11. Geology and mineral resources of Lane County, Oregon, 1938: W. D. Smith	0.50
14. Oregon metal mines handbook: by the staff	
B. Grant, Morrow, and Umatilla counties, 1941	0.50
C. Jackson County, 1943	0.75
16. Field identification of minerals for Oregon prospectors and collectors, 4th printing, 1949: compiled by Ray C. Treasher (reprint in preparation)	0.75
17. Manganese in Oregon, 1942: by the staff	0.45
18. First aid to fossils, or what to do before the paleontologist comes, 1939: J. E. Allen	0.20
21. Second biennial report of the Department, 1939-40	Free
23. Investigation of reported occurrence of tin at Juniper Ridge, Oregon, 1942: H. C. Harrison & J. E. Allen	0.40
24. Origin of the black sands of the coast of southwestern Oregon, 1943: W. H. Twenhofel	0.30
26. Soil: Its origin, destruction, and preservation, 1944: W. H. Twenhofel	0.45
27. Geology and coal resources of Coos Bay quadrangle, 1944: J. E. Allen & E. M. Baldwin	1.00
28. Fourth biennial report of the Department, 1943-44	Free
29. Ferruginous bauxite deposits in NW Oregon, 1945: F. W. Libbey, W. D. Lowry, & R. S. Mason	1.00
30. Mineralogical and physical composition of the sands of the Oregon coast from Coos Bay to the mouth of the Columbia River, 1945: W. H. Twenhofel	0.35
31. Geology of the St. Helens quadrangle, 1946: W. D. Wilkinson, W. D. Lowry, & E. M. Baldwin	0.45
32. Fifth biennial report of the Department, 1945-46	Free
33. Bibliography (supplement) of the geology and mineral resources of Oregon, 1947: J. E. Allen	1.00
34. Mines and prospects of the Mt. Reuben mining district, Josephine County, Oregon, 1947: E. A. Youngberg	0.50
35. Geology of the Dallas and Valsetz quadrangles, Oregon, 1947: E. M. Baldwin	0.75
36. (1st vol.) Five papers on foraminifera from the Tertiary of W. Oreg., 1947: J. A. Cushman, R. E. Stewart, & K. C. Stewart	1.00
(2d vol.) Two papers on foraminifera from the Tertiary of W. Oreg. and W. Wash., 1949: Cushman, Stewart, & Stewart; and one paper on microfauna of Wildcat coast section, Humboldt County, Calif., 1949: Stewart & Stewart	1.00
38. Sixth biennial report of the Department, 1947-48	Free
39. Geology and mineralization of the Morning mine and adjacent region, Grant County, Oregon, 1948: Rhesa M. Allen, Jr.	0.50
40. Prelim. description of the geology of the Kerby quad., Oregon, 1949: Wells, Hotz, and Cater	0.85
41. Ground-water studies in Umatilla and Morrow counties, 1949: Norman S. Wagner	1.25

SHORT PAPERS

2. Industrial aluminum - a brief survey, 1940: Leslie L. Motz	0.10
4. Flotation of Oregon limestone, 1940: J. B. Clemmer & B. H. Clemmons	0.10
9. Some manganese deposits in the southern Oregon coastal region, 1942: Randall E. Brown	0.10
13. Antimony in Oregon, 1944: Norman S. Wagner	0.15
15. Recon. geology of limestone deposits in the Willamette Valley, Oregon, 1946: J. E. Allen	0.15
16. Perlite deposits near the Deschutes River, southern Wasco County, Oregon, 1946: J. E. Allen	0.15
17. Sodium salts of Lake County, Oregon, 1947: Ira S. Allison & Ralph S. Mason	0.15
18. Radioactive ores the prospector should know, 1949: David J. White	0.20
19. Brick and tile industry in Oregon, 1949: J. E. Allen and R. S. Mason	0.20

GEOLOGIC MAPS

Geologic map of the Willowa Lake quadrangle, 1938: W. D. Smith & others	0.45
Geologic map of the Salem Hills and North Santiam River basin, Oregon, 1939: T. P. Thayer	0.25
Geologic map of the Medford quadrangle, 1939: F. G. Wells & others	0.40
Geologic map and geology of the Round Mountain quadrangle, 1940: W. D. Wilkinson & others	0.25
Geologic map of the Butte Falls quadrangle, 1941: W. D. Wilkinson & others	0.45
Geologic map and geology of the Grants Pass quadrangle, 1940: F. G. Wells & others	0.30
Preliminary geologic map of the Sumpter quadrangle, 1941: J. T. Pardee & others	0.40
Geologic map of the Portland area, 1942: Ray C. Treasher	0.25
Geologic map of the Coos Bay quadrangle, 1944: J. E. Allen & E. M. Baldwin (sold with Bull. 27)	---
Geologic map of the St. Helens quadrangle, 1945: Wilkinson, Lowry, & Baldwin (also in Bull. 31)	0.35
Geologic map of the Dallas quadrangle, Oregon, 1947: E. M. Baldwin (also in Bull. 35)	0.25
Geologic map of the Valsetz quadrangle, Oregon, 1947: E. M. Baldwin (also in Bull. 35)	0.25
Prelim. geologic map of the Kerby quad., Oreg., '48: Wells, Hotz, & Cater (also in Bull. 40)	0.80

THE ORE.-BIN: issued monthly by the staff as medium for news about the Department, mines, and minerals.
(Available back issues 5¢ each) Subscription price per year 0.40

*A complete list of publications will be mailed postpaid upon request.
**Missing report numbers out of print.

State Department of Geology and Mineral Industries

1069 State Office Building
Portland 1, Oregon

Name: BONANZA MINE

Douglas County: Nonpareil Bonanza
District

Location: Sutherland, Oregon

Report by: Elton A. Youngberg

Owners: Bonanza Quicksilver Mines, Inc.

Date: March 20, 1945

Current Development: The winze has been completed to the 800-level and a crosscut driven to the vein. A drift was driven on the foot wall of the vein and encountered ore about 175 feet from the crosscut. Approximately 50 feet has been driven in ore, which is of exceptional grade--varying from 54.5 to 38.5 pounds per ton. The continuation of the ore shoot to this level will materially lengthen the life of the mine.

Production: The mine produced 275 flasks of quicksilver in January, 290 flasks in February and production in March is expected to be about 340 flasks. The mine is producing 60 to 70 tons of ore per day. They only operate the Gould Rotary furnace about two-thirds of the time. Production would be greater if manpower were available.

Employment: Approximately 35 men are on the payroll at the present time which is somewhat greater than in the summer of 1944 when it dropped to 27. The number of men employed will be increased as manpower becomes available.

Informant: Claire Welchel and Elton A. Youngberg

This report must be properly executed and filed with the Corporation Commissioner on or before July 1, 1930, in order to entitle a corporation mining for any of the precious metals, coal, or prospecting or operating for oil, or operating an oil well, to pay a license fee of only \$10. If not so filed, such corporation must pay the same license fees as are required to be paid by other corporations for gain.—Section 6390, Oregon Laws.

Annual Report to the Corporation Department

FOR THE YEAR ENDING JUNE 30, ~~1929~~ 1937

Of BONANZA QUICKSILVER MINING COMPANY

(Give legal name in full)

a corporation organized and existing under and pursuant to the laws of the State of Oregon.

The location of its principal office is at No. 1017 N. Larrabee Ave. Street,
in the city of Portland, in the state of Oregon

The names and addresses of principal officers, with the postoffice address of each, are as follows:

NAMES	OFFICE	BUSINESS ADDRESS
V. Undeen	President	14th & Everett Sts., Portland, Ore.
C. M. Scherer	Secretary	1017 N. Larrabee Ave., Portland, Ore.
C. M. Scherer	Treasurer	do

The date of the annual election of officers is 2nd Saturday in June

The date of the annual election of directors is 2nd Saturday in June

	Common With Par Value	Common No Par Value	Preferred
Amount of authorized capital stock	\$250,000.00	Shares	\$ None
Number of shares of authorized capital stock	250,000.00		
Par value of each share	\$ 1.00	xxxxxx	\$
Amount of capital stock subscribed	\$250,000.00	Shares	\$
Amount of capital stock issued	\$175,600.00	Shares	\$
Amount of capital stock paid up	\$175,600.00	Shares	\$
Price at which no par value stock issued	xxxxxx	\$	xxxxxx

State amount of capital, represented by stock of no par value, with which the corporation began business \$

Total amount of its properties in Oregon (name of claims, lodes, or placers)
103.29 acres of patented land in Sec. 16 and 21, Twp. 25 S., R. 4 W., N.M.,
also two mining claims known as Mercury No. 1 and Mercury No. 2, in
the Nonpariel Mining District, Douglas Co., Oregon

The location of its properties as last above described

The amount of work done thereon and improvements made thereon since the time of filing last report

The amount of output or products of the mines or wells of such corporation from January 1, ~~1929~~ ¹⁹³⁶, to December 31, ~~1929~~ ¹⁹³⁶, inclusive, Not operated, no profits

The value of output or products of the mines or wells of such corporation from January 1, ~~1929~~ ¹⁹³⁶, to December 31, ~~1929~~ ¹⁹³⁶, None

IN WITNESS WHEREOF, I, C. M. Scherer, Secretary

of said corporation, have signed this report, this

[CORPORATE SEAL]

22d day of June, A. D. 1937.

(signed) C. M. Scherer, Secretary

STATE OF OREGON,

County of _____ } ss.

I, _____, being first duly sworn, depose and say, upon oath, that I am _____ of the foregoing corporation; that said corporation is not engaged in or transacting any other business except that of locating, prospecting,

PRODUCERS

The largest Oregon producer, the Bonanza Mine, operated by Bonanza Mines, Inc. is located about 8 miles east of Sutherlin, which is on U. S. Highway #99 and about 16 miles north of Roseburg. The present company started work in 1937 when a 5-hearth Herreshoff was installed. In 1939, a gold furnace was added and production was increased.

Schuetze's description of the ore deposit follows: "The outcrop of the mine is not prominent. It strikes a little east of north and runs along the east sidehill slope of a ridge having a north and south trend. The dip of the ore zone is about 40° east. The ore is found in a bed of altered tuffaceous sandstone, formerly mistaken for an altered andesite, overlain by shale. In places at least this has the appearance of being a fault contact and a fault gouge forms the hanging wall at these points. At other places shale forms the hanging and evidence of movement is not so clear. The footwall is not distinct in that it is a commercial footwall that must be determined by assay. From the hanging wall, cross fractures run out approximately at right angles to the strike; running from these to the south are small fractures roughly parallel to the strike of the hanging wall.

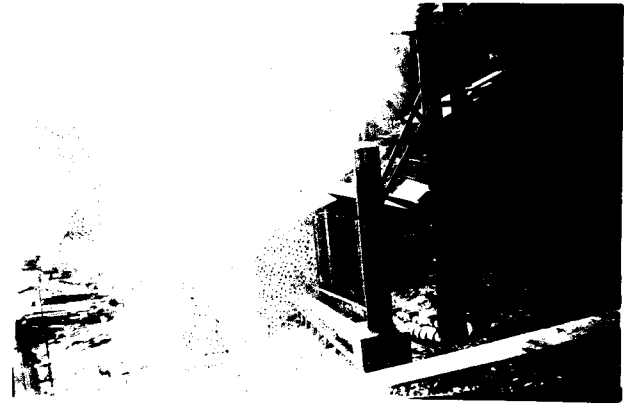
* O.P. cit

-4-

"The ore deposition is governed by this fracture pattern, the ore being better close under the hanging and close to the cross fractures and grading off from the hanging to the west and from the cross fractures to the south."

There are two active levels at the present time, No. 11 adit and the main haulage level and No. 1 about 150 feet above. Most of the stoping is being done from No. 1 adit, from which broken ore is passed through raises to No. 11 where it is drawn into 2-ton side-dump cars and hauled to the plant in trains of six cars by a storage battery locomotive. Development is being kept well ahead of mining, and a very material tonnage is now indicated both between No. 11 and No. 1, and above No. 1. A winze is being sunk on ore from No. 11 and is down about 100 feet. In addition, some surface prospecting is being done with a bulldozer.

Present mining rate is about 125 tons a day; quicksilver production varies between 400 and 500 flasks a month. Grading for a second Gould furnace has been



M I N I N G L E A S E

THIS AGREEMENT, made this ____ day of October, 1939, by and between the State Land Board of the State of Oregon, acting for and on behalf of said State, hereinafter called party of the first part or "first party", and the Bonanza Mines, Inc., a corporation organized in the State of Oregon, having its principal offices at Roseburg, Oregon, hereinafter called the party of the second part or "second party";

Whereas, the State of Oregon owns a parcel of land, including mineral rights, adjacent to the mining property of the second party, which land is alleged to contain valuable deposits of quicksilver, and possibly other minerals, and

Whereas, the first party desires to lease its property for mining purposes to the second party on a royalty basis, and

Whereas, the second party has a quicksilver reduction plant in operation on its mining property adjacent to the land of the first party and is desirous of leasing said land for the purpose of mining and reducing any ore that may be found thereon,

W I T N E S S E T H :

That for and in consideration of the sum of one dollar (\$1.00) paid by each party to the other, receipt of which is hereby acknowledged, and of the mutual covenants, agreements, and conditions hereinafter expressed, it is mutually agreed between the parties hereto as follows:

1. The life of this agreement shall be twenty (20) years from date hereof.

2. Second party is herewith given, during the life of this agreement, the exclusive right to enter upon, to explore, drill, test pit, and to mine on the land herein leased and to remove and sell for the benefit of both parties hereto, under the conditions prescribed in this agreement, all quicksilver and all other minerals which may be found profitable to mine, from the said land of the first party herewith leased and described in Exhibit A, which is attached hereto and made a part of this agreement.

3. The party of the second part shall pay to the party of the first part as royalty under this lease ten per cent of all quicksilver recovered from said premises during the life of this agreement; or in the event the first party should so elect, and at its option, there shall be paid to first party as royalty hereunder in lieu of the delivery of such quicksilver, ten per cent

of all moneys received from the sale of quicksilver mined or removed from said premises during the life of this agreement. Provided, that the royalties payable by second party to first party under this agreement shall be 12½ per cent of all quicksilver mined or recovered from said premises, or, at the option of the first party 12½ per cent of the moneys received from the sale of the same when the price received for quicksilver sold equals or exceeds \$125.00 per flask of 76 pounds. In the event the first party elects to take metal instead of cash royalty the cost of bottles for the bottling of the first party's share of said quicksilver shall be paid by the first party and no other deductions whatsoever shall be made. If the said first party elects to take its royalty in cash, after its share of the quicksilver shall have been sold, then and in that event its percentage of the sale price shall be calculated on the basis of the amount of money received from the sale of quicksilver, less the cost of selling, bottles and transportation charges by the ordinary standard and direct methods of transportation from the mine or reduction works to the point of sale. In no case, under this contract, shall deductions or charges be made against the first party for the cost of mining, milling, refining, or reducing any ores to metallic quicksilver or to refined metals and concentrates in the form to be shipped by second party to ultimate buyer, or delivery of the first party's percentage to first party as the case may be. In determining as to whether or not the price received for quicksilver sold equals or exceeds \$125. per flask, the selling price of the metal delivered at place of sale shall be the controlling factor, based upon the price of any given lot in which the first party may have an interest as to the royalty to be paid to first party, that is to say as to whether or not said royalty shall be ten or twelve and one-half per cent of the selling price of such lot, and as the price to be paid first party for its interest in the lot or shipment. In the event the first party elects to take metal instead of a cash royalty, then and in that event the price received by second party for its remaining percentage of the lot from which first party receives its share in metal shall determine as to whether the royalty shall be ten or twelve and one-half per cent. It is understood that for the purposes of this contract, first party shall be deemed and considered as the absolute owner of an undivided ten per cent (or twelve and one-half per cent as the case may be) of all quicksilver or quicksilver ores extracted from said property, less its appropriate pro rata of transportation, bottles and selling charges. In all cases of sales, copies of bills of lading or shipping statements, settlement sheets, etc., shall be furnished to the first party as the products are shipped for sale and as the sales are accomplished. All royalty payments payable to first party shall be made on the 15th day of each and every month following the calendar month in which payments are received by second party from the sale of metal upon which first party is entitled to a royalty.

4. The party of the second part shall pay to the party of the first part as further royalty under this lease ten per cent of the value of all bullions, concentrates, ores and precious and semiprecious metals and minerals mined, removed or reduced from said premises during the life of this agreement, except as to quicksilver ore and quicksilver which is covered by the provisions of paragraph 3 hereof, the said ten per cent of such value being calculated on the basis of the amount of money received from the sale of such metals or minerals, less the cost of selling, transportation charges by the ordinary standard and direct methods of transportation from the mine or reduction works to the point of sale, at a mint, mill, smelter or other purchasing agent designated by second party, and less treatment charges at the mint or smelter, and ten per cent of the proceeds received therefrom less the deductions hereinabove specified, but without other deductions, shall be paid over to the first party as royalty on or before the 15th day of the month following the calendar month in which the sale of said metals or minerals is made. For the purposes of this contract, first party shall be deemed and considered as the absolute owner of an undivided ten per cent of all such bullions, concentrates, ores and precious and semi-precious metals and minerals extracted from said property, less its appropriate pro rata of said shipping, transportation and treatment charges. In all cases of sales copies of bills of lading or shipping statements, settlement sheets, bullion returns, etc., shall be furnished to the first party as the products are shipped for sale and as the sales are accomplished. It is expressly understood and agreed that the provisions of this paragraph (paragraph 4 hereof) are applicable to all precious and semi-precious metals and minerals mined from said property, except quicksilver, and quicksilver ores, quicksilver and quicksilver ores being governed by the provisions of paragraph 3 hereof.

5. Express privilege is given second party to mix ores from property of first party with other ores, provided that all ores mined and removed from the property of first party shall be kept separate from the ores originating from any other property until the product enters the ore bin feeding the furnace or retort, in order that the said ores from property of first party may be properly sampled for assay and their quantity calculated on basis of volume or weight.

6. Computation of royalty under this lease shall be accomplished as follows: One sample shall be cut by the automatic sampling device from all segregated ores after the same have been crushed which come from the property of the first party; such sample shall be further crushed and the contents thereof thoroughly mixed, whereupon such sample shall be divided into three equal parts, one to be retained by first party, one by second party and the third shall be sealed and kept in a safe place

for umpire purposes, ~~and~~ The two parties hereto shall agree as to the average metal content to be applied to the tonnage of ore treated during a given time or forming a given lot which average metal content shall be multiplied by the quantity in tons of such ore reduced during the same period of time or forming the same lot, and this product of average metal content times tonnage shall be used to compute the percentage of the total tons times average metal content of ore from all sources reduced or to be reduced by the furnace during the same period of time. Said calculated percentage of the total metal content in the ore treated shall be the figure used on which to compute royalty to the party of the first part upon the actual total recovery for said period. In the event the parties hereto do not agree as to the assay value of metal content of samples taken by the automatic sampler from the ores mined from the property of the first party, then and in that event the third sample, which was sealed and kept for umpire purposes, shall be sent, by the parties hereto, to a reputable assay laboratory for umpire analysis, and the result or metallic content of the umpire sample shall be the figure used as representing the metallic content of the ores of the said first party in the given lot of ore mined during the period to which the said sample applies. The cost of the umpire assaying shall be spared to whichever of the parties hereto in their assay of a portion of the sample umpired came closest to the result, as regards metallic content of the sample in question, of the said umpire assay and the other party of the parties hereto shall pay for such umpire assay. The umpire's assay shall be final and not subject to arbitration.

7. Second party agrees to install at his own cost and expense separate storage space, crusher, and automatic sampling apparatus which will make possible at all times the segregation, crushing, and automatic sampling of said ore originating on the property of first party until the said ores have been sampled and measured as to quantity.

8. First party shall have the right to demand, if in practice any other method used is not by him deemed satisfactory for weighing said ores, that second party install at his own expense an automatic weighing device to be placed in the mill circuit between the mine and the furnace, for properly weighing ores from property of first party.

9. First party or its authorized agent shall have the right at all reasonable times to sample and measure the tonnage of all ores placed in the furnace of second party and originating at points other than the property of the said first party in order that the said first party may verify the computation which will determine the percentage of the total material put through the furnace which represents ore from the property of the said first party and the said authorized agent shall have full access at all times to the books and records of the second party for the purpose of verifying tonnages, assay

values, shipments, monetary returns, and such other records as pertain to the mining, reduction, shipping and sale of all minerals and metals mined or treated in the plant which treats the ores of the said first party.

10. Second party agrees to conduct its work of exploration and mining in workman-like and miner-like fashion according to accepted standards observed in such operations and to conduct its milling and reduction plant in such fashion as to recover the highest amount of quicksilver and other metals consistent with standard metallurgical practice and economic recovery.

11. In case of dispute between the parties hereto in respect of any point pertaining to mining, milling, samplings, furnace practice, computations, payments or other points under this lease, the said dispute shall be settled by a committee of three (3) persons, one chosen by the party of the first part, one by the party of the second part, and the third by the other two parties so chosen, and findings of the said committee of three, or a majority of them, shall be binding as to both parties hereto.

12. The party of the first part shall maintain or have a right to maintain its authorized representative at the property and plant of the said second party for inspection and verification of the operation and said authorized agent shall have the privilege at any time of causing the stoppage of ore being mined from the property of the party of the first part and placed in the retort or furnace of the party of the second part, if, in his opinion, the sampling, assaying, or plant recovery is such as to cause an abnormal loss in income or royalty to the said party of the first part, such stoppage to continue only so long as the condition exists which is alleged to be objectionable to first party.

13. All prospecting, mining and development work shall be done at the sole cost and expense of second party and no liens or charges of any kind or nature shall be permitted to accrue or to be filed against the said premises and property covered hereby or any part thereof on account of the operations, acts or conduct of the second party hereunder and the second party agrees to promptly pay and satisfy in full all expenses for labor, materials, supplies, workmen's compensation and unemployment compensation and all other lienable indebtedness which may be incurred by it in connection with its mining, prospecting or development or other work upon said premises.

14. Second party shall have the right to use in its operation any standing timber or other facilities now existing on the property.

15. Second party may not sub-lease or assign

this lease to another party without the approval in writing of the first party.

16. Second party shall begin actual mining operations and removal of ore, if any, from the said property within ninety (90) days from date hereof, and shall continue such mining operations with reasonable diligence until the exhaustion of said ore, if any, provided that the said second party shall not be required to maintain its operation if prevented by strikes, acts of God, and causes beyond its control, provided that from and after ninety (90) days from date hereof second party shall cause during each six months period an average of not less than one hundred man-shifts per month of work to be done on property of first party in underground mining or exploration pointed at production of ore. It is further agreed that cessation of substantial mining operation on the said property for period of six (6) consecutive months shall be a cause for the termination of this lease by the first party, but subject to the provisions of paragraph 20 hereof.

17. Nothing herein may be construed as implying the existence of the relationship of principal and agent between the parties hereto except as may be specifically authorized by the party of the first part, and the party of the second part shall save the first party and the premises herein listed harmless from any and all claims or demands for injury to person or property arising out of said operation of second party.

18. The second party has the right to abandon the property leased on thirty (30) days' written notice addressed to the Clerk of the State Land Board, Salem, Oregon, and shall have the privilege, after such abandonment, of removing within ninety (90) days any machinery or personal effects placed thereon by the said second party subject only to the condition that any liens caused by the second party shall have been extinguished before any machinery or effects may be removed; and subject to the further condition that the second party shall, before removing any machinery or effects, have accounted for and paid over unto the first party any royalties which may have then accrued out of such operations and in addition thereto shall have paid all indebtedness which might constitute a lien against the property covered by this agreement.

19. The first party shall have the right to declare a forfeiture of this lease for failure of the second party to comply with any of the conditions hereof, provided that second party shall have a period of thirty (30) days after notice in which to cure the conditions complained of by first party.

20. It is understood that, if at any time the selling price of quicksilver shall fall below fifty dollars (\$50.00) per flask, the obligation of continuous operation covered by paragraph 16 of this lease shall no

longer be binding on the second party until such time as the market price shall return to fifty dollars (\$50.00) or more per flask.

21. It is understood that, should the second party mine to exhaustion the ores and minerals found and developed by it on the premises herewith leased and should desire to convey through the drifts or haulage ways on the property leased ores originating on other properties of the second party, such privilege is herewith expressly given to the said second party with the understanding that, should the discoveries of new ore be made by the second party or others on the land herewith leased, the privilege of cross-mining rights, given in this paragraph, shall not operate as an embarrassment of first party in any future negotiations with the said second party or others in respect of the exploration, mining and removal of said newly discovered ore.

IN WITNESS WHEREOF, this Mining Lease has been executed in duplicate by said STATE LAND BOARD, by authority of law, and by said BONANZA MINES, INC., by its vice-president and secretary, thereunto duly authorized, this the day and year first above written.

STATE LAND BOARD,

By

Clerk

BONANZA MINES, INC.,

By

Vice-President

Secretary

To be added on at the end of paragraph 3, as a continuation
of said paragraph.

.....and provided that the royalties payable by second party to the first party under this lease shall be twelve and one-half percent (12½%), subject to nominal deductions noted above in this paragraph, of the value of all minerals mined, removed, and reduced from said premises when the price of quicksilver, as sold, equals or exceeds \$125.00 per flask of seventy-six (76) pounds.

Clause concerning minimum royalty, to be inserted after paragraph 3.

The second party shall pay on January 1st, 1940, and on the first day of each and every month thereafter during the life of this contract a minimum royalty to first party in the amount of one hundred dollars (\$100), provided that the second party shall have the privilege in any month, in which the current royalty exceeds the minimum royalty, ^{of deducting} the amount or portion thereof by which in any preceding month the minimum royalty so paid exceeded the amount of current royalty due first party during that month, that is to say, the said minimum monthly royalties shall be construed as advanced minimums under this lease.

To be included with paragraph 3 on royalty, and following at the end of Paragraph 3:

and provided that the royalty payable by the second party to the first party under this lease, shall be $12\frac{1}{2}\%$ of the value of all minerals and metals mined, removed and reduced from said premises, when the price for which quicksilver is sold, equals or exceeds \$125 per flask of 76 pounds.

5

MONTHLY REPORT OF PURCHASES
Machinery, Supplies, Maintenance Items and Repairs under
Preference Rating Order P-56

NAME OF MINE OPERATOR OR AUTHORIZED AGENT FOR SUCH OPERATOR Bonanza Mines, Inc.
ADDRESS Sutherlin, Oregon. MINE SERIAL NO. 33-1
PURCHASES MADE IN MONTH OF October / November 19 41.

(INSTRUCTIONS. - This report is to be filed with the Emergency Coordinator of Mines for your State, on or before the 10th day of the month following the month covered by this report. Group all orders for similar materials which were bought from the same supplier. Make as few separate entries as possible. However, purchases of the same material from different suppliers must be shown separately. In II, III, and IV, enter the authorization number - not to be confused with your mine serial number - which was issued to you by O.P.M., permitting the purchase of the material listed. Retain copies of all these reports in your files.)

I. PURCHASES TO WHICH RATING A-3 HAS BEEN APPLIED DURING MONTH:

Material _____ Quantity _____ Supplier See detailed list attached

II. PURCHASES TO WHICH RATING A-3 HAS BEEN APPLIED DURING MONTH:

Material _____ Quantity _____ Supplier see detailed list attached
O.P.M. Authorization No. _____

III. PURCHASES TO WHICH RATING A-1-c HAS BEEN APPLIED DURING MONTH:

Material None Quantity _____ Supplier _____ O.P.M. Authorization No. _____

IV. PURCHASES TO WHICH RATING A-1-a HAS BEEN APPLIED DURING MONTH:

Material None Quantity _____ Supplier _____ O.P.M. Authorization No. _____

CERTIFICATION

The undersigned hereby certifies to the Office of Production Management, that

- (1) he executed the foregoing statement on behalf of and by authority of the above-named Mine Operator;
- (2) the above-named Mine Operator has, during the period covered by this report, complied with all the provisions of Preference Rating Order P-5 and has applied Ratings only in accordance therewith;
- (3) during such period the Mine Operator's inventory of operating supplies and other material has not been greater than the minimum necessary for the efficient operation of his business, and the ratio of inventory (quantity) to current production has not exceeded the ratio of average year-end inventory (quantity) to average production for the years 1938, 1939, and 1940;
- (4) the facts stated herein are, to the best of his knowledge and belief, true and correct.

Jan. 1942
(Date)

(Signature of Authorized Official)

Vice-President.
(Title)

(Section 35 of the Criminal Code, 18 U.S.C. 2, makes it a criminal offense to make a false statement or representation to any department or agency of the United States as to any matter within its jurisdiction.)

(This form may be reproduced; copies may be made large enough to allow necessary space to enter all purchases)

BONANZA MINES, INC.
 Sutherlin, Oregon.
 Continuation Sheet PD-119 (Rev. 12-1-41)

Purchases Made in Month of November 1941. RATING A-8

Material	Quantity:	Supplier
Rubber Sockets for Vibrating Screen	8	Balzer Machinery Company
Brushes (carbon) for Skillsaw	18 Sets	A. C. Barbo
Laboratory Chemicals & Supplies		Braun-Knecht-Heimann
Air Sampler & Dust Counter	1	Braun-Knecht-Heimann
Sprinkler Heads	18	Crane Company
12" Steel Mine Car Wheels w/hub caps bgs	4	Hymann-Michaels Company
Sheets Black Iron 48"x96"	2	J. E. Haseltine Company
D-6 Tractor Repair Parts (Oct request)		Interstate Tractor & Equipment Co.
D-7 Tractor Repair Parts "		Interstate Tractor & Equipment Co.
S-22 Sullivan Stoppers	2	H. W. Gould & Co.
Side Bearing Covers for Trunnion rolls	2	H. W. Gould & Co.
H-2 Jackhammer Repair parts		H. W. Gould & Co.
S-22 Sullivan Stoper Repair parts		H. W. Gould & Co.
Pipe Galvanizer Iron - 1-1/2"	1,000 Ft	Marshall-wells Co.
ditto 1"	50 Ft	Marshall-wells Co.
Hand Tools and Hardware		Marshall-wells Co.
Common Wire Nails	10 Keg	Marshall-wells Co.
Bolts, Nuts and Washers		Marshall-wells Co.
Rental Parts for Edison Elec. Batty Lamps		Mine Safety Supply Co.
Timken Bits	150	M. R. Senter Tool Co.
Electrical Equipment, supplies & repairs		Westinghouse Elec. Supply Co.

Purchases Made in Month of November 1941. RATING A-3 Repairs

V-60 Victor Acetylene Regulartor	1	J. E. Haseltine Company
----------------------------------	---	-------------------------

(This form may be reproduced; copies may be made large enough to allow necessary space to enter all purchases)

MONTHLY REPORT OF PURCHASES

MACHINERY, SUPPLIES, MAINTENANCE ITEMS AND REPAIRS UNDER
PREFERENCE RATING ORDER P-56

Name of mine operator or authorized agent for such operator Bonanza Mines, Inc.

Address Sutherlin, Oregon. Mine serial No. 33-1

Purchases made in month of December, 1941

(Instructions.—This report is to be filed with the Emergency Coordinator of Mines for your State, on or before the 10th day of the month following the month covered by this report. Group all orders for similar materials which were bought from the same supplier. Make as few separate entries as possible. However, purchases of the same material from different suppliers must be shown separately. In II, III, and IV, enter the authorization number—not to be confused with your mine serial number—which was issued to you by O. P. M., permitting the purchase of the material listed. Retain copies of all these reports in your files.)

I. PURCHASES TO WHICH RATING A-8 HAS BEEN APPLIED DURING MONTH:

Material _____ Quantity _____ Supplier As per detail attached:

II. PURCHASES TO WHICH RATING A-3 HAS BEEN APPLIED DURING MONTH:

Material _____ Quantity _____ Supplier As per detail attached Authorization No. _____

III. PURCHASES TO WHICH RATING A-1-c HAS BEEN APPLIED DURING MONTH:

Material None Quantity _____ Supplier _____ O. P. M. Authorization No. _____

IV. PURCHASES TO WHICH RATING A-1-a HAS BEEN APPLIED DURING MONTH:

Material None Quantity _____ Supplier _____ O. P. M. Authorization No. _____

CERTIFICATION

The undersigned hereby certifies to the Office of Production Management, that

- (1) he executed the foregoing statement on behalf of and by authority of the above-named Mine Operator;
- (2) the above-named Mine Operator has, during the period covered by this report, complied with all the provisions of Preference Rating Order P-56 and has applied Ratings only in accordance therewith;
- (3) during such period the Mine Operator's inventory of operating supplies and other material has not been greater than the minimum necessary for the efficient operation of his business, and the ratio of inventory (quantity) to current production has not exceeded the ratio of average year-end inventory (quantity) to average production for the years 1938, 1939, and 1940;
- (4) the facts stated herein are, to the best of his knowledge and belief, true and correct.

Jan. 10, 1942

(Date)

H. C. Williams
(Signature of authorized official)

Vice-President.

(Title)

(Section 35 of the Criminal Code, 18 U. S. C. 80, makes it a criminal offense to make a false statement or representation to any department or agency of the United States as to any matter within its jurisdiction.)

BONANZA MINES, INC.
 Sutherlin, Oregon. Mine Serial No. 53-1
 Purchases made in Month of December 1941

PURCHASES TO WHICH RATING A-8 HAS BEEN APPLIED DURING MONTH:

Material:	QUANTITY:	SUPPLIER
81 B Gates Matched V Belts	3	R. A. Babb
Rubber Tubing Thermofex	25'	Braun-Knecht-Heimann
Laboratory Chemicals	2	"
No. 5 Bantam Respirators	12	E. D. Bullard Company
Filters for above - packages -	2	"
Parts for C.P. 111 Demolition Teel	7	Chicago Pneumatic Tool Co
1 Pair Welding Goggles	1	J. E. Haseltine Co.
2 Sets Motor Brushes - Thor Universal Drill -	2	"
Hand Tools and Hardware		Marshall-Wells Company
6 - Style #104 Mandarin Latex Gloves	6	United States Rubber Co
- #769 Balck Duck Apron	1	"
Electrical Supplies and Repairs		Westinghouse Elec. Supp Co
1 - 2 HP 220/440 V 1725 RPM Type K G-E Motor	1	Enterprise Elec. Works

PURCHASES TO WHICH RATING A-3 HAS BEEN APPLIED DURING MONTH:

12" Extra Duty Elevator Belt, #32 oz. duck, 6 ply 1/16" x 1/32" covers	76'	H. w. Gould & Co.
JL - 1 Jacklegs -	2	"
A4NNOJ Air Driven Double Drum Hoise, with vertical & Horizontal Rollers	1	"

(Rev. 12-1-41)

MONTHLY REPORT OF PURCHASES
Machinery, Supplies, Maintenance Items and Repairs under
Preference Rating Order P-56

NAME OF MINE OPERATOR OR AUTHORIZED AGENT FOR SUCH OPERATOR Bonanza Mines, Inc.
ADDRESS Sutherlin, Oregon MINE SERIAL NO. 33-1
PURCHASES MADE IN MONTH OF October, 19 41.

(INSTRUCTIONS. - This report is to be filed with the Emergency Coordinator of Mines for your State, on or before the 10th day of the month following the month covered by this report. Group all orders for similar materials which were bought from the same supplier. Make as few separate entries as possible. However, purchases of the same material from different suppliers must be shown separately. In II, III, and IV, enter the authorization number - not to be confused with your mine serial number - which was issued to you by O.P.M., permitting the purchase of the material listed. Retain copies of all these reports in your files.)

I. PURCHASES TO WHICH RATING A-8 HAS BEEN APPLIED DURING MONTH:

Material _____ Quantity _____ Supplier See detailed list attached

II. PURCHASES TO WHICH RATING A-3 HAS BEEN APPLIED DURING MONTH:

Material _____ Quantity _____ Supplier Repairs See detailed list attached.
O.P.M. Authorization No. _____

III. PURCHASES TO WHICH RATING A-1-c HAS BEEN APPLIED DURING MONTH:

Material None Quantity _____ Supplier _____ O.P.M. Authorization No. _____

IV. PURCHASES TO WHICH RATING A-1-a HAS BEEN APPLIED DURING MONTH:

Material None Quantity _____ Supplier _____ O.P.M. Authorization No. _____

CERTIFICATION

The undersigned hereby certifies to the Office of Production Management, that

- (1) he executed the foregoing statement on behalf of and by authority of the above-named Mine Operator;
- (2) the above-named Mine Operator has, during the period covered by this report, complied with all the provisions of Preference Rating Order P-56 and has applied Ratings only in accordance therewith;
- (3) during such period the Mine Operator's inventory of operating supplies and other material has not been greater than the minimum necessary for the efficient operation of his business, and the ratio of inventory (quantity) to current production has not exceeded the ratio of average year-end inventory (quantity) to average production for the years 1938, 1939, and 1940;
- (4) the facts stated herein are, to the best of his knowledge and belief, true and correct.

Jan. 1942

(Date)

(Signature of Authorized Official)

Vice-President.

(Title)

(Section 35 of the Criminal Code, 18 U.S.C. 30, makes it a criminal offense to make a false statement or representation to any department or agency of the United States as to any matter within its jurisdiction.)

(This form may be reproduced; copies may be made large enough to allow necessary space to enter all purchases)

BONANZA MINES, INC.

Sutherlin, Oregon.

Continuation Sheet PD-119 (Rev. 12-1-41)

Purchases Made in Month of October 1941. RATING A-8

Material	Quantity	Supplier
Laboratory Chemicals & Supplies		Braun-Knecht-Hiemann Company
Respirators	12	E. D. Bullard Company
Valve, Pipe Fittings		Crane Company
Thrust Bearings - for Rail Pender	2	Howard Drillard
8" Feeder Pipe Complete	1	H. W. Gould & Co.
8" ditto w/spl. hopper	1	H. W. Gould & Co.
Repr parts for Sterling Slo-speed Motor		H. W. Gould & Co.
Repair parts for Sullivan S-22 Machine		H. W. Gould & Co.
Hand Tools and Hardware		Marshall-wells Company
Bolts, Nuts and Washers		Marshall-wells Company
Polish Reflectors for Electric Batty Lamps	6	Mine Safety Supply Co.
Rental parts for Elec. Battery Lamps		Mine Safety Supply Co.
McDonald Safety Hats Model "1"	12	Sanderson Safety Supply Co.
2" Miners Leather Belts	6	Sanderson Safety Supply Co.
18" - 1" Hex Solid Steel	6	M. R. Senter Tool Service
24" - 1" Hex Solid Steel	6	M. R. Senter Tool Service
Electrical Equipment, supplies & repairs		Westinghouse Elec. Supply Co.

Purchases Made in Month of October 1941. RATING A-3

No. 2 Toledo Geared Threading Device -	1	Woodbury Company
No. 4 Rigid Pipe Cutter	1	Woodbury Company
Sullivan Single Drum Tugger Hoist	2	H. W. Gould & Co.

Handwritten mark

MONTHLY REPORT OF PURCHASES

MACHINERY, SUPPLIES, MAINTENANCE ITEMS AND REPAIRS UNDER PREFERENCE RATING ORDER P-56

NAME OF MINE OPERATOR OR AUTHORIZED AGENT FOR SUCH OPERATOR Bonanza Mines, Inc.
 ADDRESS Sutherlin, Oregon MINE SERIAL NUMBER 33-1
 PURCHASES MADE IN MONTH OF February 1942.

I. PURCHASES TO WHICH RATING A-8 HAS BEEN APPLIED DURING MONTH:

<u>MATERIAL</u>	<u>QUANTITY</u>	<u>SUPPLIER</u>
#51B Gates Rubber V Belt	4	R. A. Babb Hardware
Guard for Skilsaw	1	A. C. Barbo
Spring " "	1	"
Spacing Collar	1	"
Ball Bearings	2	"
Laboratory Chemicals		Braun-Knecht-Heimann-Co.
Chemical Cartridges	2	E. D. Bullard Co.
Back-Head Grip for Demolition Tool	1	Chicago Pneumatic Tool Co.
Diaphragms	4	"
Valve Studs	2	"
Cylinder for Jack Hammer	1	H. W. Gould & Co.
Oil Plugs " " "	3	"
Jackleg piston leathers	3	"
Elastic stop nuts for Jackleg	3	"
Jackleg piston head washers	6	"
" retaining springs	2	"
" packing washers	2	"
" tail piece	2	"
Retainers for Rock Drill	6	"
Feeder Springs	6	"
Key Bolts	4	"
Back Head	1	"
Nails	10 kegs-5#	Marshall-Wells Company
Pipe Fittings		"
Bolts & Nuts	150	"
Hand Tools & Hdwe.		"
Electric Cable	450'	Westinghouse Elect. Supply

II. PURCHASES TO WHICH RATING A-3 HAS BEEN APPLIED DURING MONTH:

<u>MATERIAL</u>	<u>QUANTITY</u>	<u>SUPPLIER</u>
Respirators with Chemical Cartridges	6	E. D. Bullard Company
Cover Materials for rewinding motor		Enterprise Elect. Co.
Voltage coils for G.E. Mag. Switch	6	General Electric Co.
Ball Bearing Sheave	1	H. W. Gould & Co.
Hoover Bearings	4	"
Housing for Air Hoist	1	"
Elevator Buckets	25	"

✓

RECEIVED
FEB 14 1942

STATE DEPT OF GEOLOGY
& MINERAL INDS.
PD-119

BONANZA MINES, INC.
SUTHERLIN, OREGON

MONTHLY REPORT OF PURCHASES

MACHINERY, SUPPLIES, MAINTENANCE ITEMS AND REPAIRS UNDER
PREFERENCE RATING ORDER P-56

NAME OF MINE OPERATOR OR AUTHORIZED AGENT FOR SUCH OPERATOR Bonanza Mines, Inc.
ADDRESS Sutherlin, Oregon. MINE SERIAL NUMBER 33-1
PURCHASES MADE IN MONTH OF January 1942

=====

I. PURCHASES TO WHICH RATING A-8 HAS BEEN APPLIED DURING MONTH:

MATERIAL	Quantity:	SUPPLIER
1 - 2 Unit Motor Generator Set	One	H. W. Gould & Company
2 - Ingersoll-Rand Jacklegs	Two	ditto
1 - Demolition Tool	One	ditto
Hand Tools and Hardware		Marshall-Wells Company
Pipe Fittings -		ditto
Track nuts and bolts 1/2"x2"	200#	ditto
Laboratory Chemicals		Braun-Knecht-Heimann Co.
Rock Drill Repair Parts		Sullivan Machinery Co.

II. PURCHASES TO WHICH RATING A-3 HAS BEEN APPLIED DURING MONTH:

MATERIAL	QUANTITY:	SUPPLIES
REPAIRS AND REPLACEMENTS:		
Armature for Skillmaw -	ONE	A. C. Barbo
No. 3 Respirators	Six	E. D. Bullard & Co.
Sullivan Rock Drill Repair Parts S-22		H. W. Gould & Company
1 Pair Safety Goggles	One	J. E. Haseltine & Co.
6 Hat Bands	Six	Sanderson Safety Supply Co.
No. 14 H.C. Drop Double Conductor Wire		1,000 Ft. Westinghouse Elec. Supp Co.

III. PURCHASES TO WHICH RATING A-1-C HAS BEEN APPLIED DURING MONTH:
None

IV. PURCHASES TO WHICH RATING A-1-A HAS BEEN APPLIED DURING MONTH:
None

The undersigned hereby certifies to the Office of Production Management, that
(1) he executed the foregoing statement on behalf of and by authority of the above-named Mine Operator;
(2) the above-named Mine Operator has, during the period covered by this report, complied with all the provisions of Preference Rating Order P-56 and has applied Ratings only in accordance therewith;
(3) during such period the Mine Operator's inventory of operating supplies and other material has not been greater than the minimum necessary for the efficient operation of his business, and the ratio of inventory (quantity) to current production has not exceeded the ratio of average year-end inventory (quantity) to average production for the years 1938, 1939 and 1940;
(4) the facts stated herein are, to the best of his knowledge and belief, true and correct.

Feb. 10, 1942
Date

H. B. Wilson
(Signature of Auth. Official)

Vice-President.
Title



MONTHLY REPORT OF PURCHASES

MACHINERY, SUPPLIES, MAINTENANCE ITEMS AND REPAIRS UNDER
PREFERENCE RATING ORDER P-56

NAME OF MINE OPERATOR OR AUTHORIZED AGENT FOR SUCH OPERATOR Bonanza Mines, Inc.
 ADDRESS Sutherlin, Oregon MINE SERIAL NUMBER 33-1
 PURCHASES MADE IN MONTH OF March 1942.

=====

I. PURCHASES TO WHICH RATING A-8 HAS BEEN APPLIED DURING MONTH:

<u>MATERIAL</u> OPERATING SUPPLIES:	<u>QUANTITY</u>	<u>SUPPLIER</u>
4000 W 230 V Wesix Oil Preheater Element	2	H. W. Gould & Company
Thermostats	2	" " " " "
2" Miners Leather Belts	2 doz.	Sanderson Safety Supply
McDonald Safety Hats	2 "	" " "
Extra bands or linings	6	" " "
Laboratory Chemicals		Braun-Knecht-Heimann-Co.
Drum Grease Seals	4	H. W. Gould & Company
60W 120V Inside Frosted Lamps	120	Westinghouse Elect. Suppl.
100W 120V " " "	24	" " "
Rolls Friction Tape	10	" " "

II. PURCHASES TO WHICH RATING A-3 HAS BEEN APPLIED DURING MONTH:

Confirmation of February verbal order

<u>MATERIAL</u> <u>REPAIRS & REPLACEMENTS</u>	<u>QUANTITY</u>	<u>SUPPLIER</u>
7½ H.P. 1800 R.P.M. 3 phase 60 Cycle 220/440 V Kloss Ball-bearing motor with set rails	1	H. W. Gould & Company

III. PURCHASES TO WHICH RATING A-1-c HAS BEEN APPLIED DURING MONTH:

<u>MATERIAL</u> REPAIRS & REPLACEMENT, OPERATING SUPPLIES:	<u>QUANTITY</u>	<u>SUPPLIER</u>
¾" Gates 18W Air Hose with fittings	150'	R. A. Babb Hardware
½" Water Hose without fittings	150'	"
Sullivan E III single drum air tugger hoist	1	H. W. Gould & Company
10" Rear Wheels for 24 cu ft skip	2	"
Sullivan H-2 Wet Rotator complete	1	"
45V 25W Headlight Lamps	6	Mancha Storage Battery Locomotive
Drive shaft for Titan B Mancha Electric Mule	1	"
Ore Bags	50	Hirsch-Weis
7/8 x 1½ Diamong shaped twisted Auger Drill Steel	3 tons	Woodbury Company

IV. PURCHASES TO WHICH RATING A-1-a HAS BEEN APPLIED DURING MONTH:
none

V. PURCHASES TO WHICH RATING A-10 HAS BEEN APPLIED DURING MONTH:

<u>MATERIAL</u>	<u>QUANTITY</u>	<u>SUPPLIER</u>
Dennison's Tags	1000	Marshall-Wells Co.

The undersigned hereby certifies to the Office of Production Management, that

- (1) he executed the foregoing statement on behalf of and by authority of the above-named Mine Operator;
- (2) the above-named Mine Operator has, during the period covered by this report, complied with all the provisions of Preference Rating Order P-56 and has applied Ratings only in accordance therewith;
- (3) during such period the Mine Operator's inventory of operating supplies and other material has not been greater than the minimum necessary for the efficient operation of his business, and the ratio of inventory (quantity) to current production has not exceeded the ratio of average year-end inventory (quantity) to average production for the years 1938, 1939 and 1940;
- (4) the facts stated herein are, to the best of his knowledge and belief, true and correct.

April 9, 1942
(Date)

C. G. Whelchel
(Signature of Auth. Official)

Superintendent
(Title)

MONTHLY REPORT OF PURCHASES

MACHINERY, SUPPLIES, MAINTENANCE ITEMS AND REPAIRS UNDER
PREFERENCE RATING ORDER P-56

NAME OF MINE OPERATOR OR AUTHORIZED AGENT FOR SUCH OPERATOR Bonanza Mines, Inc.
ADDRESS Sutherlin, Oregon MINE SERIAL NUMBER 33-1
PURCHASES MADE IN MONTH OF April 1942.

=====

I. PURCHASES TO WHICH RATING A-8 HAS BEEN APPLIED DURING MONTH:

<u>MATERIAL</u>	<u>QUANTITY</u>	<u>SUPPLIER</u>
10 gauge cut-off saw	1	R. A. Babb Hdwe. Co.
Laboratory Material		Braun-Knecht-Heimann-Co.
Chevron type leather pkg.	12	H. W. Gould & Co.
Bolts, Nuts & Washers		Marshall-Wells Co.
Hardware & Handtools		" "
Office Supplies		Pac. Stationery & Print- ing Co.
B.A. 6.6 Heaters	2 sets	Westinghouse Elect. Sup.
Electrical supplies		" " "
Mazda Lamps	144	" " "
Nico Press Sleeves	100	" " "
Houck Fire Gun	1	Woodbury Company

II. PURCHASES TO WHICH RATING A-3 HAS BEEN APPLIED DURING MONTH:
NONE

III. PURCHASES TO WHICH RATING A-1-c HAS BEEN APPLIED DURING MONTH:

<u>MATERIAL</u>	<u>QUANTITY</u>	<u>SUPPLIER</u>
3 groove, B section - Standard Key- way Multi-Duty Sheave	1	R. A. Babb Hardware Co.
#75 B Gates Vulco V Belts	3	" "
Selenium-sulphide paper	6 rolls	General Electric Co.
Parts for Sullivan H-2 Rock Drill:		H. W. Gould & Co.
Pistons	6	" "
Chucks	6	" "
Rifle Bars	3	" "
Pawls	24	" "
Springs	24	" "
Ratchet Rings	2	" "
Parts for Sullivan Diamond Drill:		
Outer Core Barrel for EX Rod	1	" "
Gurney Ball Bearing	4	" "
Sullivan Hoist - Type E-111:		
Complete Brake Bands	4	" "
Brake Linings with rivets	2	" "

PURCHASES TO WHICH RATING A-1-c HAS BEEN APPLIED DURING MONTH: (Cont.)

<u>MATERIAL</u>	<u>QUANTITY</u>	<u>SUPPLIER</u>
Parts for Ingersoll-Rand Air Hoist:		
Clutch Bands	4	H. W. Gould & Co.
" Levers	4	" "
Bruntons and accessories	2	" "
8" Feeder Pipe Complete	1	" "
Chrome Cast Welding Rod	100#	Interstate Tractor & Equipment Co.
Lang Lay Preformed wire rope	500'	" "
Trip Blocks	4	Marshall- Wells Co.
Wire Nails	25 kegs	" "
Underwriter's Extinguishers	2	Pacific Fire Extinguish Company
Mazda Auto Lamps	6	Westinghouse Elect. Sup
#10 R.C. Solid Wire	500'	" "
#12 R.C. Solid Wire	500'	" "
Gibbs Jointer	1	R. A. Babb Hardware
Saw Setting Block	1	" "
3/8" round iron	3 bars	" "
7/8 acct. tool steel 42#	1	" "
1/2" x 2" Mild Steel	40'	Woodbury Company
1/2" Round " "	60'	" "
3/8" " " "	60'	" "
7/8" Oct. High Carbon	20'	" "
Parts for CP-111 Demolition tool:		
Valves, Springs, Bushings	5	Chicago Pneumatic Crane Company
3/4" Std. Blk. pipe	105'	" "
1/2" " " "	105'	" "
Fittings	294	" "
AC Bushing	1	H. W. Gould & Co.
AC Pilot	1	" "
AC Casing	80'	" "
Half & Half solder	6#	J. E. Haseltine & Co.
Genuine Babbitt	7#	" "
Nickel	3 1/2#	" "
Federated socket metal	20#	" "
Spool Kester Acid-Filled wire solder	5#	" "
Blow Torch	1	" "
Stove bolts & nuts	10	" "
Emery Wheels	2	" "
Handles & rivets for shovels	36	" "
H.S. Twist Drills	13	" "
Washers	25	" "
Finger tip for Mancha Elect. Mule	10	Mancha Storage Battery
Headlight Lamps	6	" " "
5/16" Wire Rope	1500'	Marshall-Wells Co.
Manilla Rope	1500'	" "

IV. PURCHASES TO WHICH RATING A-1-a HAS BEEN APPLIED DURING MONTH:
NONE

V. PURCHASES TO WHICH RATING A-10 HAS BEEN APPLIED DURING MONTH:
NONE

BONANZA MINES, INC.
SUTHERLIN, OREGON

MONTHLY REPORT OF PURCHASES -

MACHINERY, SUPPLIES, MAINTENANCE ITEMS AND REPAIRS UNDER
PREFERENCE RATING ORDER P-56

NAME OF MINE OPERATOR OR AUTHORIZED AGENT FOR SUCH OPERATOR Bonanza Mines, Inc.
ADDRESS Sutherlin, Oregon MINE SERIAL NUMBER 33-1
PURCHASES MADE IN MONTH OF May 1942.

=====

I. PURCHASES TO WHICH RATING A-8 HAS BEEN APPLIED DURING MONTH:

<u>MATERIAL</u> - Repairs & Replacements	<u>QUANTITY</u>	<u>SUPPLIER</u>
Repairs for Sullivan H-2 Drill	12	H. W. Gould & Company
Fount. for heater	1	" " " " "
Office Supplies		Pacific Stationery and Printing Co.

II. PURCHASES TO WHICH RATING A-3 HAS BEEN APPLIED DURING MONTH:
NONE

III. PURCHASES TO WHICH RATING A-1-c HAS BEEN APPLIED DURING MONTH:

<u>MATERIAL</u> - Repairs & Replacements	<u>QUANTITY</u>	<u>SUPPLIER</u>
Gates V. Belts	3	R. A. Babb Hardware
Sheave	1	" "
Lab. Chemicals		Braun-Knecht-Heimann- Company
8" Ventube with couplings	100'	Howard Drullard
Materials for repair 30 HP motor		Enterprise Electric
Powder - Gelex No. 2	400 Cases	E.I. du Pont de Nemours & Company
Contacts	1 set	General Electric
Liners & pistons for pump	4	H. W. Gould & Co.
Piston rings	8	H. W. Gould & Co.
Parts for No. 6 Core Drill		" " " " "
Motor Vent Cap	1	" " " " "
Repairs Oil Heater		" " " " "
Repairs for D-6 Cat		Interstate Tractor & Equipment Co.
Hand tools and hardware		Marshall-Wells Co.
Extinguishers	4	Pacific Fire Extinguisher Company
Repairs to Titan B Mancha Motor		Vitus Electric Works
Gates suction hose	15'	R. A. Babb Hardware
#3 Cartridge Respirators	24	E. D. Bullard & Co.
Garlock Brake Lining	27'	H. W. Gould & Co.
Parts for Hendy Crusher		" " " " "
G.E. Mercury Vapor Detector	1	General Electric Supply Company

III. PURCHASES TO WHICH RATING A-1-c HAS BEEN APPLIED DURING MONTH: (cont.)

<u>MATERIAL</u> - Repairs & Replacements	<u>QUANTITY</u>	<u>SUPPLIER</u>
Selenium-sulphide paper	6 rolls	General Electric Supply Company
Fuses and contacts		Westinghouse Electric Supply Company

IV. PURCHASES TO WHICH RATING A-1-a HAS BEEN APPLIED DURING MONTH:
NONE

V. PURCHASES TO WHICH RATING A-1o HAS BEEN APPLIED DURING MONTH:

<u>MATERIAL</u>	<u>QUANTITY</u>	<u>SUPPLIER</u>
Office Supplies		Pacific Stationery and Printing Co.

The undersigned hereby certifies to the Office of Production Management, that
 (1) he executed the foregoing statement on behalf of and by authority of the above-named Mine Operator:

- (2) the above-named Mine Operator has, during the period covered by this report, complied with all the provisions of Preference Rating Order P-56 and has applied Ratings only in accordance therewith;
- (3) during such period the Mine Operator's inventory of operating supplies and other material has not been greater than the minimum necessary for the efficient operation of his business, and the ratio of inventory (quantity) to current production has not exceeded the ratio of average year-end inventory (quantity) to average production for the years 1938, 1939 and 1940;
- (4) the facts stated herein are, to the best of his knowledge and belief, true and correct.

June 8, 1942
(Date)

C. D. Welch
(Signature of Auth. Official)

Superintendent
(Title)

JUN 2 1942

BUREAU OF LABOR STATISTICS COLLECTION AGENCY FOR

MINING

WAR PRODUCTION BOARD
WASHINGTON, D. C.

ATTENTION: THIS REPORT MUST BE SUBMITTED BY ALL MINES RECEIVING FORMS. PREPARE THREE (3) COPIES, RETURN THE ORIGINAL TO EMERGENCY COORDINATOR OF MINES FOR YOUR STATE, AND THE DUPLICATE AND TRIPPLICATE TO THE BUREAU OF LABOR STATISTICS, WASHINGTON, D. C. NOT LATER THAN MAY 30, 1942.

CONFIDENTIAL
FOR USE OF
FEDERAL DEFENSE AGENCIES
ONLY
REVELATION OF THE INFORMATION CONTAINED ON THIS FORM IN ANY MANNER TO UNAUTHORIZED PERSONS IS PROHIBITED BY THE ESPIONAGE ACT.

REPORT OF OPERATIONS

WEEK OF MAY 10 TO MAY 16, 1942

Bonanza Mines, Inc.
Sutherlin
Oregon

MI
835

COMMODITY MINED Mercury (Cinnabar)

1. PRODUCTION DURING APRIL, 1942 3,417 LONG TONS OF COAL (CHECK ONE)
2. VALUE OF EQUIPMENT, OPERATING, AND REPAIR SUPPLIES RECEIVED IN APRIL, 1942

ITEM RECEIVED	VALUE OF EQUIPMENT AND SUPPLIES			
	RECEIVED UNDER PREFERENCE ORDER P-56	RECEIPTS UNDER OTHER RATED ORDERS	UNRATED RECEIPTS	TOTAL RECEIPTS
NEW MACHINERY	\$	\$	\$	\$
OPERATING SUPPLIES	65.84		3,872.44	3,938.28
MAINTENANCE AND REPAIR SUPPLIES	1,370.76	239.16	343.80	1,953.72
TOTAL	1,436.60	239.16	4,216.24	5,892.00

3. MINE (UNDERGROUND, SURFACE, AND OPEN PIT).
(A) NUMBER OF WAGE EARNERS ON EACH SHIFT, WEEK ENDING NEAREST MAY 15TH. (EXCLUDE SHOPS AND YARDS)

SHIFT	MONDAY THROUGH FRIDAY		SATURDAY		SUNDAY	
	LENGTH OF SHIFT	NUMBER OF WAGE EARNERS AT WORK	LENGTH OF SHIFT	NUMBER OF WAGE EARNERS AT WORK	LENGTH OF SHIFT	NUMBER OF WAGE EARNERS AT WORK
FIRST - DAYLIGHT	8 hrs	30	8 hrs	31	Nothing	to report
SECOND - EVENING	8 hrs	22	8 hrs	22	"	"
THIRD - NIGHT		Nothing to report				

- (B) IF THE MINE IS BEING OPERATED MORE THAN 5 DAYS PER WEEK, ARE THE 6TH AND 7TH DAYS OF WORK ACCOMPLISHED THROUGH OVERTIME, OR IS A "SWING SHIFT" METHOD USED? Overtime

4. MILL (TRIPPLE OR PREPARATION PLANT)
(A) NUMBER OF WAGE EARNERS ON EACH SHIFT, WEEK ENDING NEAREST MAY 15TH.

SHIFT	MONDAY THROUGH FRIDAY		SATURDAY		SUNDAY	
	LENGTH OF SHIFT	NUMBER OF WAGE EARNERS AT WORK	LENGTH OF SHIFT	NUMBER OF WAGE EARNERS AT WORK	LENGTH OF SHIFT	NUMBER OF WAGE EARNERS AT WORK
FIRST - DAYLIGHT	8 hrs	4	8 hrs	4	8 hrs	3
SECOND - EVENING	8 "	2	8 "	2	8 "	2
THIRD - NIGHT	8 "	2	8 "	2	8 "	2

- (B) IF THE MILL IS BEING OPERATED MORE THAN 5 DAYS PER WEEK, ARE THE 6TH AND 7TH DAYS OF WORK ACCOMPLISHED THROUGH OVERTIME, OR IS A "SWING SHIFT" METHOD USED? Overtime

5. EMPLOYMENT AND HOURS (MINE, MILL, AND SURFACE) (EXCLUDE SHOPS AND YARDS)

- (A) TOTAL NUMBER OF WAGE EARNERS WORKING DURING THE PERIOD 81 - Inc. 4 on vacation (192 Hrs.)
- (B) TOTAL WEEKLY MAN-HOURS WORKED BY WAGE EARNERS REPORTED IN 5 (A)* 3723
- (C) APPROXIMATE NUMBER OF WAGE EARNERS WORKING OVERTIME DURING PERIOD COVERED BY THIS REPORT 62
- (D) TOTAL NUMBER OF HOURS OF OVERTIME WORKED BY WAGE EARNERS DURING THE PERIOD* 523
- (E) TOTAL NUMBER OF SALARIED EMPLOYEES WORKING DURING THE PERIOD 8

*NOT REQUIRED OF COAL MINES

NAME OF FIRM BONANZA MINES, INC.

DATE June 8, 1942

Van W. Holcombe
(SIGNATURE OF PERSON MAKING REPORT)

Wm. Accountant
Superintendent
(TITLE OF PERSON MAKING REPORT)

BONANZA MINES, INC.
SUTHERLIN, OREGON

MONTHLY REPORT OF PURCHASES -

MACHINERY, SUPPLIES MAINTENANCE ITEMS AND REPAIRS UNDER
PREFERENCE RATING ORDER P-56

NAME OF MINE OPERATOR OR AUTHORIZED AGENT FOR SUCH OPERATOR Bonanza Mines, Inc.
ADDRESS Sutherlin, Oregon MINE SERIAL NUMBER 33-1
PURCHASES MADE IN MONTH OF June 1942.

=====

- I. PURCHASES TO WHICH RATING A-8 HAS BEEN APPLIED DURING MONTH:
NONE
- II. PURCHASES TO WHICH RATING A-3 HAS BEEN APPLIED DURING MONTH:
NONE
- III. PURCHASES TO WHICH RATING A-1-c HAS BEEN APPLIED DURING MONTH:

<u>MATERIAL</u> - Repairs & Replacements	<u>QUANTITY</u>	<u>SUPPLIER</u>
3/4" Air hose with Sta-put clamps & fittings	100'	R. A. Babb Hardware Co.
Garden hose with couplings	100'	" "
Condensor Tubes - 10 ga. mild steel	16	Beall Pipe & Tank Corp.
Condensor return bands	4	" " " "
Lab. Chemicals		Braun-Knecht-Heimann-Co.
Pipe fittings		Crane Company
Cast iron condensor hoppers	2	H. W. Gould & Company
* Sullivan H-2 Wet Rotators complete	2	" "
G. E. W 25 Rod	100#	J. E. Haseltine & Co.
All purpose bronze welding rod	20#	" "
Emery wheels	4	" "
Manganal applicator bar	120'	" "
Manganal electrodes	100#	" "
Hand tools and hardware		Marshall-Wells Company
5/16" wire rope for slusher use	1500'	" " "
Rd. mild steel - assort. sizes	26 bars	" " "
Flat mild steel	2 bars	" " "
Scaling bar steel	8 bars	" " "
Mild steel - 48" x 96"	14 sheets	" " "
Manila rope	300'	" " "
10-20-30-40-60 D Common wire nails	34 kegs	R. A. Babb Hardware Co.
6' steel tapes	3	" "
Parts for magneto telephone		Westinghouse Electric Supply Company
Core lifters	12	H. W. Gould & Company
High test steel chain	20'	J. E. Haseltine & Co.
#9 Annealed smooth wire	100#	" "
Brake shoes for Titan B Mancha Mule	1 set	Mancha Storage Battery Locomotive

* New machinery



I. PURCHASES TO WHICH RATING A-1-c HAS BEEN APPLIED DURING MONTH: Cont.

<u>MATERIAL</u> - Repairs & Replacements	<u>QUANTITY</u>	<u>SUPPLIER</u>
Economy Renewable Fuse Links	400	Westinghouse Electric Supply Company
Mazda Lamps	132	" " "
Contacts & fingers for Rheostatic controller	1 set	" " "
Linestarter	1	" " "
Friction tape	6 rolls	" " "
Rubber splicing compound	6 "	" " "
Renewable fuse links	100	" " "

IV. PURCHASES TO WHICH RATING A-1-a HAS BEEN APPLIED DURING MONTH:

<u>MATERIAL</u> - Repairs & Replacements	<u>QUANTITY</u>	<u>SUPPLIER</u>
1½ MRV 15 Two Stage Ingersoll-Rand Motor Pump	1	H. W. Gould & Company

V. PURCHASES TO WHICH RATING A-10 HAS BEEN APPLIED DURING MONTH:

<u>MATERIAL</u>	<u>QUANTITY</u>	<u>SUPPLIER</u>
Office supplies		Pacific Stationery & Printing Company

The undersigned hereby certifies to the Office of Production Management, that

- (1) he executed the foregoing statement on behalf of and by authority of the above-named Mine Operator;
- (2) the above-named Mine Operator has, during the period covered by this report, complied with all the provisions of Preference Rating Order P-56 and has applied Ratings only in accordance therewith;
- (3) during such period the Mine Operator's inventory of operating supplies and other material has not been greater than the minimum necessary for the efficient operation of his business, and the ratio of inventory (quantity) to current production has not exceeded the ratio of average year-end inventory (quantity) to average production for the years 1938, 1939 and 1940;
- (4) the facts stated herein are, to the best of his knowledge and belief, true and correct.

July 10, 1942
(Date)

O. G. Welch
(Signature of Auth. Official)

Superintendent
(Title)

BONANZA MINES, INC.
SUTHERLIN, OREGON

MONTHLY REPORT OF PURCHASES

MACHINERY, SUPPLIES MAINTENANCE ITEMS AND REPAIRS UNDER
PREFERENCE RATING ORDER P-56

NAME OF MINE OPERATOR OR AUTHORIZED AGENT FOR SUCH OPERATOR Bonanza Mines, Inc.
ADDRESS Sutherlin, Oregon MINE SERIAL NUMBER 33-1
PURCHASES MADE IN MONTH OF July 1942.

=====

I. PURCHASES TO WHICH RATING A-8 HAS BEEN APPLIED DURING MONTH:

<u>MATERIAL</u> - Repairs & Replacements	<u>QUANTITY</u>	<u>SUPPLIER</u>
Hose	1	Alemite Company
Test Tubes	5 Gross	Braun-Knecht-Heimann- Company
Carborundum Gumming Wheel Grit	1	J. E. Haseltine Co.
Palmetto Twisted Packing	1#	Marshall-Wells Company
Miner's Prospect Pick	1	" " "
Perfection Wicks	2	" " "
Office Supplies		Pacific Stationery & Printing Company

II. PURCHASES TO WHICH RATING A-3 HAS BEEN APPLIED DURING MONTH:

NONE

III. PURCHASES TO WHICH RATING A-1-c HAS BEEN APPLIED DURING MONTH:

<u>MATERIAL</u> - Repairs & Replacements	<u>QUANTITY</u>	<u>SUPPLIER</u>
Gates V Belts	4	R. A. Babb Hardware
Carbon Brushes	6 sets	A. C. Barbo
Armature	1	" " "
Lab. Chemicals		Braun-Knecht-Heimann- Company
Grinding Plates	1 set	" " "
2" Swing Check Valve	1	Crane Company
1/2" Packing	15'	Garlock Packing Co.
Plugs and Taps	8	Marshall-Wells Company
Welding on D-7		Roseburg Welding & Radiator Works
Push Button Control Station	1	Westinghouse Electric Supply Company
Linestarter	1	" " "
Economy Renewable Fuse Links	200	" " "
Socket Rubbers for SECO Vibrating Machine	12	Balzer Machinery Co.
Brass Pump Rod for Worthington Duplex Steam Pump	1	H. W. Gould & Company

✓

III. PURCHASES TO WHICH RATING A-1-c HAS BEEN APPLIED DURING MONTH: - Cont.

<u>MATERIAL</u> - Repairs & Replacements	<u>QUANTITY</u>	<u>SUPPLIER</u>
Welding Electrodes	50#	J. E. Haseltine Co.
Screw Extractors & Drills	1 set	" " " "
Grab Hooks	4	" " " "
Brake shoe for Titan "B" Mancha Mule	1	Mancha Storage Battery Locomotive
Bronze Lip Bushing for Duff-Norton Jack	1	Marshall-Wells Co.
C. H. Mine Pull Switches	2	State Electric Supply, Ltd.
Federal Howler - Vibratory Horn	1	" "
Rubber Coats	2	U. S. Rubber Co.
Hoe Type Slushing Scraper	1	Western Machinery Co.

IV. PURCHASES TO WHICH RATING A-1-a HAS BEEN APPLIED DURING MONTH:

NONE

V. PURCHASES TO WHICH RATING A-10 HAS BEEN APPLIED DURING MONTH:

NONE

The undersigned hereby certifies to the Office of Production Management, that

- (1) he executed the foregoing statement on behalf of and by authority of the above-named Mine Operator:
- (2) the above-named Mine Operator has, during the period covered by this report, complied with all the provisions of Preference Rating Order P-56 and has applied Ratings only in accordance therewith;
- (3) during such period the Mine Operator's inventory of operating supplies and other material has not been greater than the minimum necessary for the efficient operation of his business, and the ratio of inventory (quantity) to current production has not exceeded the ratio of average year-end inventory (quantity) to average production for the years 1938, 1939 and 1940;
- (4) the facts stated herein are, to the best of his knowledge and belief, true and correct.

August 10, 1942
(Date)

C. F. Wheelock
(Signature of Auth. Official)

Suppl.
(Title)

BUREAU OF LABOR STATISTICS COLLECTION AGENCY FOR

WAR PRODUCTION BOARD -

WASHINGTON, D. C. -

Report of Operations
Week of June 14 to June 20, 1942

Bonanza Mines, Inc.
Sutherlin, Oregon
Commodity Mined - Mercury (Cinnabar)

1. Production during June 1942 - 3,397 Tons.
2. Value of Equipment, operating and repair supplies received in June 1942.

Items Received	Received Under Pref. Order P-56	Other	Unrated Receipts	Total
New Machinery	230.00	-	0	230.00
Operating Supplies	123.52	-	3,588.07	3,711.59
Maint. & Repr.	1,840.44	-	1,276.48	3,116.92
Total	2,193.96		4,864.55	7,058.51

3. MINE (Underground, Surface and Open Pit):

Shift	Mon. thru Fri.		Saturday		Sunday	
	Length Shift	No. Workers	Length Shift	No. Workers	Length Shift	No. Workers
First	8 hrs.	36	8 hrs	36	-	-
Second	8 "	19	8 "	19	-	-
Third						

B - Overtime

4. MILL:

Shift	Mon thru Fri.		Saturday		Sunday	
	Length Shift	No. Workers	Length Shift	No. Workers	Length Shift	No. Workers
First	8 hrs.	4	8 hrs.	4	8 hrs.	3
Second	8 "	2	8 "	2	8 "	2
Third	8 "	2	8 "	2	8 "	2

B - Overtime

5. EMPLOYMENT AND HOURS -

- A-Total number of wage earners working during the period - 71
- B-Total weekly man-hours worked by wage earners reported in 5-A - 3533
- C-Approximate number of wage earners working OVERTIME during period covered by this report 64
- D-Total number of hours of OVERTIME worked by wage earners during the period 473
- E-Total number of salaried employees working during the period 8

Name of Firm BONANZA MINES, INC.

Date July 10, 1942

Samuel Halcombe
Signature of person making report

Miner
Title

BUREAU OF LABOR STATISTICS COLLECTION AGENCY

FOR WAR PRODUCTION BOARD

WASHINGTON, D. C.

Report of Operations
Week of July 12 to July 18, 1942

Bonanza Mines, Inc.
Sutherlin, Oregon
Commodity Mined - Mercury (Cinnabar)

1. Production during July 1942 - 3,395 Tons.
2. Value of Equipment, operating and repair supplies received in July 1942.

Items Received	Received Under Preference Order P-56	Other	Unrated Receipts	Total
New Machinery				
Operating Supplies	\$126.19		\$3,449.62	\$3,575.81
Maint. & Repr.	537.50		1,041.82	1,579.32
Total	\$663.69		\$4,491.44	\$5,155.13

3. MINE (Underground, Surface and Open Pit):

Shift	Mon. thru Fri.		Saturday		Sunday	
	Length shift	No. Workers	Length Shift	No. Workers	Length Shift	No. Workers
First	8 hrs	38	8	38	8 hrs.	1
Second	8 "	14	8	14	8 "	1
Third						

B - Overtime

4. MILL:

Shift	Mon. Thru Fri.		Saturday		Sunday	
	Length Shift	No. Workers	Length Shift	No. Workers	Length Shift	No. Workers
First	8 hrs	5	8 hrs	5	8 hrs	4
Second	8 "	2	8 "	2	8 "	2
Third	8 "	2	8 "	2	8 "	2

B- Overtime

5. EMPLOYMENT AND HOURS

A-Total no. of wage earners working during the period - 68
 B-Total weekly man-hours worked by wage earners reported in 5-A - 3136
 C-Approximate number of wage earners working OVERTIME during period covered by this report 53
 D-Total number of hours of OVERTIME worked by wage earners during the period 370
 E-Total number of salaried employees working during the period 6

Name of Firm BONANZA MINES, INC.

Date August 6, 1942

James W. Holcombe
Signature of person making report

W. H. O'Connell
Title

BONANZA MINES, INC.
SUTHERLIN, OREGON

RECEIVED
SEP 9 1942

STATE DEPT OF GEOLOGY
& MINERAL INDS.

MONTHLY REPORT OF PURCHASES

MACHINERY, SUPPLIES, MAINTENANCE ITEMS AND REPAIRS UNDER
PREFERENCE RATING ORDER P-56

NAME OF MINE OPERATOR OR AUTHORIZED AGENT FOR SUCH OPERATOR Bonanza Mines, Inc.
ADDRESS Sutherlin, Oregon MINE SERIAL NUMBER 33-1
PURCHASES MADE IN MONTH OF August 1942.

I. PURCHASES TO WHICH RATING A-8 HAS BEEN APPLIED DURING MONTH:

<u>MATERIAL</u> - Repairs & Replacements	<u>QUANTITY</u>	<u>SUPPLIER</u>
Glass Bead Tower	1	Braun-Knecht-Heimann-Co.
26" Hand Saw	1	Marshall-Wells Company
6" Hand Saw Files	1 doz.	" " "
12" M.B. Files	1 "	" " "
6" M.B. Files	1 "	" " "
6" Screw Drivers	3	" " "
Stove Bolts	100	" " "
Wood Screws	1 gr.	" " "
Black Enamel	1 pt.	" " "
Mill Brooms	3	" " "
Colored Wiping Rags	100#	" " "
Hat Bands - assorted sizes	12	Sanderson Safety Supply
8 oz. rolls friction tape	1 doz.	Westinghouse Electric Supply Company
8# Klein Pliers	1	" " "
Perfection Wicks	6	Marshall-Wells Company

II. PURCHASES TO WHICH RATING A-3 HAS BEEN APPLIED DURING MONTH:

NONE

III. PURCHASES TO WHICH RATING A-1-c HAS BEEN APPLIED DURING MONTH:

<u>MATERIAL</u> - Repairs & Replacements	<u>QUANTITY</u>	<u>SUPPLIER</u>
Gates Vulco Rope	3	R. A. Babb Hardware Co.
40 D Common Nails	10 kegs	" " " " "
D8 Hand Saw	1	" " " " "
Bronze Screen	2 sq. ft.	" " " " "
6" Mill Files	2 doz.	" " " " "
20, 30, 60 D Common Nails	20 kegs	" " " " "
Lab. Chemicals		Braun-Knecht-Heimann-CO.
Thermometer	1	" " " " "
Hays Gas Analyzer	1	" " " " "



III. PURCHASES TO WHICH RATING A-1-c HAS BEEN APPLIED DURING MONTH: Cont.

<u>MATERIAL</u> - Repairs & Replacements	<u>QUANTITY</u>	<u>SUPPLIER</u>
Pipe Fittings	5½ doz.	Crane Company
Galvanized Pipe	180'	" "
Rotary Pump Packing	10'	Garlock Packing Co.
Silver King Conveyor Belting	15½'	Goodyear Rubber & Asbestos Company
Parts for 1½ MRV 25 Pump		H. W. Gould & Co.
Chuck Bushing	6	" " " " "
Parts for Ingersoll-Rand Pump	6	" " " " "
Shaft Sleeve for Pump	1	" " " " "
Part for Water Packing Piston	1	" " " " "
Assort. H. S. Twist Drills	18	J. E. Haseltine & Co.
D8 Hand Saw	1	" " " " "
7/8" wire Rope	20'	Marshall-Wells Company
Steel Tackle Blocks	2	" " " "
Mild Steel	40'	" " " "
Hardware		" " " "
Manila rope	750'	" " " "
30 D Nails	8 kegs	" " " "
Leg Type Bath Tub	1	L. W. Metzger Company
40 Gal. Water Heater	1	" " " "
200 Gal. Septic Tank	1	" " " "
2 conductor #16 Rubber Cord or cable	300'	State Elect. Supply, Ltd
Wire size 2/0 soldering lugs	6	Westinghouse Electric
60 amp. - 3 pole fusible service switch	1	" " "
3 Wire Range Receptacle	2	" " "
#6 Solid W.P. Wire	1 coil	" " "
Gates V. Belts	2	R. A. Babb Hwe. Co.
Backhead complete for C.P.-III		
Demolition Tool	1	Chicago Pneumatic Tool Company
Parts for Sullivan Jackhammer		H. W. Gould & Co.
Mucker Shovels	3 doz.	J. E. Haseltine & Co.
Mill Brooms	1 doz.	" " " " "
Parts for Mine Lamps		Mine Safety Appliances Company

IV. PURCHASES TO WHICH RATING A-1-a HAS BEEN APPLIED DURING MONTH:

<u>MATERIAL</u> * Repairs & Replacements	<u>QUANTITY</u>	<u>SUPPLIER</u>
¼" Mild Steel	3 sheets	R. A. Babb Hardware Co.
Magnifier	1	Braun-Knecht-Heimann-CC
2 cond. Sheathed Cable	100'	Westinghouse Electric Supply Company

V. PURCHASES TO WHICH RATING A-10 HAS BEEN APPLIED DURING MONTH:

<u>MATERIAL</u> - Repairs & Replacements	<u>QUANTITY</u>	<u>SUPPLIER</u>
Office Supplies		Pacific Stationery & Printing Company

- The undersigned hereby certifies to the Office of Production Management, that
- (1) he executed the foregoing statement on behalf of and by authority of the above-named Mine Operator;
 - (2) the above-named Mine Operator has, during the period covered by this report, complied with all the provisions of Preference Rating Order P-56 and has applied Ratings only in accordance therewith;
 - (3) during such period the Mine Operator's inventory of operating supplies and other material has not been greater than the minimum necessary for the efficient operation of his business, and the ratio of inventory (quantity) to current production has not exceeded the ratio of average year-end inventory (quantity) to average production for the years 1938, 1939 and 1940;
 - (4) the facts stated herein are, to the best of his knowledge and belief, true and correct.

September 8, 1942

(Date)

C. D. Welchell
(Signature of Auth. Official)

Chief Superintendent
(Title) #.

BONANZA MINES, INC.
SUTHERLIN, OREGON

RECEIVED
OCT 12 1942
STATE DEPT OF GEOLOGY
& MINERAL INDS.

MONTHLY REPORT OF PURCHASES

MACHINERY, SUPPLIES, MAINTENANCE ITEMS AND REPAIRS UNDER
PREFERENCE RATING ORDER P-56

NAME OF MINE OPERATOR OR AUTHORIZED AGENT FOR SUCH OPERATOR Bonanza Mines, Inc.
ADDRESS Sutherlin, Oregon MINE SERIAL NUMBER 33-1

=====

I. PURCHASES TO WHICH RATING A-8 HAS BEEN APPLIED DURING MONTH:

<u>MATERIAL</u> - Repairs & Replacements	<u>QUANTITY</u>	<u>SUPPLIER</u>
NONE		

II. PURCHASES TO WHICH RATING A-3 HAS BEEN APPLIED DURING MONTH:

<u>MATERIAL</u>	<u>QUANTITY</u>	<u>SUPPLIER</u>
NONE		

III. PURCHASES TO WHICH RATING A-1-c HAS BEEN APPLIED DURING MONTH:

<u>MATERIAL</u> - Repairs & Replacements	<u>QUANTITY</u>	<u>SUPPLIER</u>
Terminal Insulators, Terminals & Contact Springs	12	Appliance Wholesalers of Oregon
V Gates Belts	6	R. A. Babb Hardware Co.
Test Tubes - Chemical with rim	5 gross	Braun-Knecht-Heimann-Co.
Tees, Bushings, Couplings, etc.	74	Crane Company
Sta-Put Wire Hose Bands	100	Howard Drullard
Niagara Oil Meter	1 only	H. W. Gould & Company
Flint Renewals	2 only	J. E. Haseltine & Co.
Aceyt. Tip Reamers	1 set	" " " " "
Repair Parts for Model 5585 Alemite Gun		" " " " "
Shade for Hascolite Lens	1	" " " " "
Klearsite Koverglass	2	" " " " "
Welding Goggles	1 pair	" " " " "
12 point Sockets	2	" " " " "
Galvanized Window Screening	3 rolls	L. W. Metzger Company
Plywood	100 sheets	" " " "
Hoe Type Slushing Scraper	1 only	Western Machinery Co.
McDonald Model "T" Hat Bands	2 only	Sanderson Safety Supply
For materials used to rebuild Bushings, Chucks, and pistons	47	American Pneumatic Tool Company



III. PURCHASES TO WHICH RATING A-1-c HAS BEEN APPLIED DURING MONTH: Cont.

<u>MATERIAL</u> - Repairs & Replacements	<u>QUANTITY</u>	<u>SUPPLIER</u>
Repair parts for Type J.' Seco Screen		Balzer Machinery Compan
Repair parts for PB-4 Compressor		Chicago Pneumatic Tool Company
AC Casing	20'	H. W. Gould & Company
Winchester Flashlights	2	J. E. Haseltine Company
Starrett Pocket Slide Caliper	1	" " " "
Tape Rule	1	" " " "
50' Coil Stove Pipe Wire	1	" " " "
Combination Stone	1	" " " "
Mazda Auto Lamps	12	" " " "
Master Pine Plug Puller	1	Interstate Tractor & Equipment Company
Bolt, Nut, Cotter Key, and Right Blade Tip for LeTourneau Angledozer		" " "
Stip Heaters	2	Westinghouse Electric Supply Company
Electrical Supplies, Brackets, Receptacles, Connectors, Straps, Etc.		" " "

IV. PURCHASES TO WHICH RATING A-1-a HAS BEEN APPLIED DURING MONTH:

<u>MATERIAL</u> - Repairs & Replacements	<u>QUANTITY</u>	<u>SUPPLIER</u>
Black Iron Pipe - 1/4" to 3"	340'	Crane Company
Parts for No. 6 Core Drill	2	H. W. Gould & Company
Victor Acet. Cutting Tips	2	J. E. Haseltine & Co.
Welding Electrodes	100#	" " " "
Acety. Tube Borium	10#	" " " "
Coil & Coil Spool for Battery Charging Equip.		Mancha Storage Battery
Miners Black Leather Belts	1 doz.	Sanderson Safety Supply
Skullguard "Hard Boiled" Hats	1 doz.	" " "
Chemical Cartridge Respirators	8	E. D. Bullard
Cartridges for Willson Chem. Resp.	24	" " "
Support Roller for Gould Feeder Pipe	1 only	H. W. Gould & Company
JLL Jacklet Mountings	3	" " " "
C.P. Hex. Nuts	5#	J. E. Haseltine & Co.
Eye Bolts for LeTourneau Angledozer	1 set	Interstate Tractor & Equipment Company
Nuts for LeTourneau Angledozer	1 set	" " "
LeTourneau Left Blade Tip	1	" " "
Bronze Lip Bushing for Norton Jack	2	Marshall-Wells Company

V. PURCHASES TO WHICH RATING A-10 HAS BEEN APPLIED DURING MONTH:

<u>MATERIAL</u>	<u>QUANTITY</u>	<u>SUPPLIER</u>
NONE		

The undersigned hereby certifies to the Office of Production Management, that

- (1) he executed the foregoing statement on behalf of and by authority of the above-named Mine Operator;
- (2) the above-named Mine Operator has, during the period covered by this report, complied with all the provisions of Preference Rating Order P-56 and has applied Ratings only in accordance therewith;
- (3) during such period the Mine Operator's inventory of operating supplies and other material has not been greater than the minimum necessary for the efficient operation of his business, and the ratio of inventory (quantity) to current production has not exceeded the ratio of average year-end inventory (quantity) to average production for the years 1938, 1939 and 1940;
- (4) the facts stated herein are, to the best of his knowledge and belief, true and correct.

October 10, 1942
(Date)

C. G. Whelchel
(Signature of Auth. Official)

Sup't
(Title)

RECEIVED
NOV 12 1942

BONANZA MINES, INC.
SUTHERLIN, OREGON
MONTHLY REPORT OF PURCHASES
OCTOBER 1942.

STATE DEPT OF GEOLOGY
& MINERAL INDS.

MACHINERY, SUPPLIES, MAINTENANCE ITEMS AND REPAIRS UNDER
PREFERENCE RATING ORDER P-56

NAME OF MINE OPERATOR OR AUTHORIZED AGENT FOR SUCH OPERATOR Bonanza Mines, Inc.
ADDRESS Sutherlin, Oregon MINE SERIAL NUMBER 33-1

I. PURCHASES TO WHICH RATING A-8 HAS BEEN APPLIED DURING MONTH:

<u>MATERIAL</u> - Repairs & Replacements	<u>QUANTITY</u>	<u>SUPPLIER</u>
Alligator belt lacing	1 Box	Marshall-Wells Co.
Cartons steel wool	1 doz.	" " "
3" paint brushes	1/2 doz.	" " "
Soot remover	1 doz.	" " "

II. PURCHASES TO WHICH RATING A-1-c HAS BEEN APPLIED DURING MONTH:

<u>MATERIAL</u> - Repairs & Replacements	<u>QUANTITY</u>	<u>SUPPLIER</u>
Hydrogen Peroxide	1 Pt.	Braun-Knecht-Heimann Co.
Copper Oxide -tech.pwd. black	10#	" " " "
Test tubes - Chemical with rim	5 gross	" " " "
Nitric acid	2 bottles	" " " "
Potassium Thiocyanate	2 oz.	" " " "
AA Lubriplate #130	100# drum	Goodyear Rubber & Asbestos
#110 for Ball Bearings & Gen. Lub.	100# drum	" " " "
Acid brushes	1/2 doz.	Marshall-Wells Co.
Wire brushes	1 doz.	" " " "
Galv. water pails	1/2 doz.	" " " "
Dennison tags	2 boxes	" " " "
100 Gem Paper Clips	1 box	Pacific Stationery Co.
Bank pins	1 box	" " " "
Bandage & adhesive compresses	4	E. D. Bullard Co.
Unguentine	1 only	" " " "

III. PURCHASES TO WHICH RATING A-1-a HAS BEEN APPLIED DURING MONTH:

<u>MATERIAL</u> - Repairs & Replacements	<u>QUANTITY</u>	<u>SUPPLIER</u>
Formaldehyde free sol. peroxide	1 pt.	Braun-Knecht-Heimann Co.
Steel case brass ring pressure gauges	3 only	Crane Company
Lag screws	250	J. E. Haseltine & Co.
Lag screws	25	Marshall-Wells Co.
Roll-up #1 - First Aid Kit	2 only	E. D. Bullard Co.
Triangular Bandage	2 only	" " " "
Eye dressing packet	2 only	" " " "



III. PURCHASES TO WHICH RATING A-1-a HAS BEEN APPLIED DURING MONTH: cont.

<u>MATERIAL</u>	<u>QUANTITY</u>	<u>SUPPLIER</u>
Oil of salt	1 only	E. D. Bullard Co.
Eye Ointment	2 only	" " " "
Boric Acid Tablets	1 only	" " " "
Dropper bottle for boric acid	1 only	" " " "
Air inlet nipples for CP-III light demolition tool	4 only	Chicago Pneumatic Tool Co
Locomotive headlight lamps	12 only	Mancha Storage Battery Co.
Cord Holders with rivets for Hard Boiled Hats	24	Sanderson Safety Supply
Skullguard Hard Boiled Hats	12	" " "
Copper Radio Aerial Wire - 7 strand	100 ft.	Westinghouse Electric Co.
Electrical supplies - 3-way plugs, Rubber caps, sockets, etc.		" " "

IV. PURCHASES TO WHICH RATING A-10 HAS BEEN APPLIED DURING MONTH:

<u>MATERIAL</u>	<u>QUANTITY</u>	<u>SUPPLIER</u>
Adding machine paper	12 rolls	Pacific Stationery Co.
Standard Columnar Pads	2	" " "
Buff Columnar Pads	2	" " "
Perforated Cash Pad	1	" " "
Felt Typewriter Pad	1	" " "
Pencil Holders	2	" " "
Pencils	1 doz.	" " "

V. PURCHASES TO WHICH RATING A-1-a HAS BEEN APPLIED DURING MONTH:

<u>MATERIAL - NEW EQUIPMENT</u>	<u>QUANTITY</u>	<u>SUPPLIER</u>
A4 N NoJ Motor driven double drum hoist with equipment A & 4 horizontal rollers AUTHORIZED BY WIRE OF 10-15-42 FROM ERNEST KANZEER, Director General for W. P. B.	1 only	Ingersoll-Rand Co.

VI. PURCHASES TO WHICH RATING AA-2-x HAS BEEN APPLIED DURING MONTH:

<u>MATERIAL - NEW EQUIPMENT</u>	<u>QUANTITY</u>	<u>SUPPLIER</u>
Buff #2-C Transit with side telescope and extension tripod AUTHORIZATION APPLIED FOR	1 only	Buff & Buff Mfg. Co.

VII. PURCHASES TO WHICH RATING AA-2-x HAS BEEN APPLIED DURING MONTH:

<u>MATERIAL - Repairs or replacements</u>	<u>QUANTITY</u>	<u>SUPPLIER</u>
Wire splints	2 only	E. D. Bullard
Transmission belting	50 ft.	Marshall-Wells-Co.
Repair parts for Model P Edison		Mine Safety Appliances
Electric Headlamps		

The undersigned hereby certifies to the Office of Production Management, that

- (1) he executed the foregoing statement on behalf of and by authority of the above-named Mine Operator;
- (2) the above-named Mine Operator has, during the period covered by this report, complied with all the provisions of Preference Rating Order P-56 and has applied Ratings only in accordance therewith;
- (3) during such period the Mine Operator's inventory of operating supplies and other material has not been greater than the minimum necessary for the efficient operation of his business, and the ratio of inventory (quantity) to current production has not exceeded the ratio of average year-end inventory (quantity) to average production for the years 1938, 1939 and 1940;
- (4) the facts stated herein are, to the best of his knowledge and belief, true and correct.

November 10, 1942

(Date)

(Signature of Auth. Official)

(Title)

Bonanza

INFORMATION FURNISHED BY EDWARD HUGH LOUGH CONCERNING EARLY
HISTORY OF BONANZA MINE

William M. Lough, was a mining man and after arriving at Oakland immediately took up that line of work. He was the original locator of the celebrated Bonanza mine which is one of the leading cinnibar (quicksilver) mines in the United States, and is located about seven miles east of Sutherlin, Douglas County, Oregon. Associated with him in the mine were Jesse Ray and Mr. Doty. Through Governor Chadwick and associates, a mining engineer, N. N. Whiting, was sent to the mine to make an examination and report his findings. As a result of this, Chadwick and his associates made a cash offer of \$40,000.00 for the property. Lough and Doty were in favor of selling but the third partner, Jesse Ray, insisted on holding out for \$50,000.00 which he claimed they would pay as readily as they would the first offer they made (\$40,000.00). The Chadwick crowd never came back with a new offer and it was then up to Lough and his partners to install a furnace and condenser.

This required financing as the furnaces and condensers were expensive. The money was borrowed from Hodge Davis & Company of Portland, and a mortgage was given as security for the loan. After the furnace and condenser had been installed, they hired a furnace man who was supposed to be experienced at this work. It is work that requires an expert as the furnaces are of special construction and the heat has to be maintained at a specified degree fahrenheit to throw off the fumes from the ore, but not enough to fuse the ore. The fumes are then condensed and the liquid mercury drips into a trough and then to a container. This furnace man proved to be rankly inefficient and in the first firing he "froze" the grates, by which is meant that the ore metals were not properly controlled on account of the heat not being regulated as it should have been. The ore fused and ran over the grates forming a solid mass which clogged the grates and made it impossible to get a proper draft and consequent heat in the furnace. The ore should have been heated just enough to liberate the gasses, but no more. The grates were ruined, as was the furnace. The only way to remedy this misfortune was to tear down the furnace and put in new grates. This was expensive and required additional money which Lough and his partners did not have. Hodge Davis & Co. took the property on the mortgage and Lough and partners lost all the money they had put into the property. A death in the firm of Hodge Davis & Co. which was followed by long drawn out litigation, tied up the affairs of the company for years, and the Bonanza mine was likewise idle for years. Of late years, the mine has been operating and paying a nice profit.

FW

State Department of Geology and Mineral Industries

702 Woodlark Building
Portland, Oregon

Name: BONANZA MINE

Douglas County; Nonpareil Bonanza
District

Location: Sutherland, Oregon

Report by: Elton A. Youngberg

Date: March 20, 1945

Owners: Bonanza Quicksilver Mines, Inc.

Current Development: The winze has been completed to the 800-level and a crosscut driven to the vein. A drift was driven on the foot wall of the vein and encountered ore about 175 feet from the crosscut. Approximately 50 feet has been driven in ore, which is of exceptional grade--varying from 4.5 to 38.5 pounds per ton. The continuation of the ore shoot to this level will materially lengthen the life of the mine.

Production: The mine produced 275 flasks of quicksilver in January, 290 flasks in February and production in March is expected to be about 340 flasks. The mine is producing 60 to 70 tons of ore per day. They only operate the Gould Rotary furnace about two-thirds of the time. Production would be greater if manpower were available.

Employment: Approximately 35 men are on the payroll at the present time which is somewhat greater than in the summer of 1944 when it dropped to 27. The number of men employed will be increased as manpower becomes available.

Informant: Claire Welchel and Elton A. Youngberg

RECEIVED
MAR 22 1945
STATE DEPT OF GEOLOGY
& MINERAL INDS.

Ore at a new depth has been opened by Bonanza Mines, Inc., at its property east of Sutherlin, Oregon. Previous lowest work was on the 700-foot level while the ore body recently opened and now being explored is on the 830-foot level. Although its size has not been proven, values are good and exploratory work is being pushed as fast as the labor shortage allows. The present crew numbers 35, which is 15 to 20 less than normal requirements. S. R. Smith, 315 Montgomery Street, San Francisco 4, California, is president of the company, which is the largest producer of quicksilver in Oregon and one of the largest in the country. C. G. Whelchel, Sutherlin, is general superintendent.

* * * * *

From THE MINING JOURNAL, April 30, 1945, p. 30.

* * * * *

Sinking another 130 feet in the near future is planned by the Bonanza Mines, Inc., at Sutherlin, Oregon. Present bottom workings are at a depth of 830 feet and 650 feet of drifting have been completed on the new low level, with about 200 feet to go to reach the objective. Production averages 50 tons of cinnabar daily.

* * * * *

From THE MINING JOURNAL, June 30, 1945, p. 30.

BONANZA MINES

The only producing silver mine in Oregon at the present time is the Bonanza at Sutherlin in Douglas County. Total payroll includes about 20 men with from 4 to 6 men kept continuously on development work. The furnace is run from 10 to 12 days a month and production averages a little more than 100 flasks a month. New development planned includes drifting south on the 830 level to prospect for an orebody found on the 630 level in 1946. A new level at 1060 feet has just been started from a winze and it is believed the extension of the main orebody on this level will be cut after drifting about 50 feet.

THE ORE.-BIN, December 1947

The Bonanza mine closed permanently in December 1949 after robbing the shaft pillars.

R 80

State Department of Geology and Mineral Industries

1069 State Office Building
Portland 1, Oregon

BULL RUN MANGANESE (Ell-Ess Group Claims)

Douglas County
Riddle District

Owner: James M. Ellis, Coos Bay, Oregon.

Location: The main occurrence is in the NE $\frac{1}{4}$ of the SE $\frac{1}{4}$ sec. 25, T. 32 S., R. 5 W. at about 2300 feet elevation. A number of claims are located in both sec. 25 and sec. 30.

Development: Several open cuts from 5 to 18 feet deep at the face and from 100 to 200 feet long expose the formation up the ridge to the north above the discovery cut.

Geology: The area is underlain by sedimentary and volcanic rocks of the Galice formation (Diller and Kay 1924). Rocks exposed in a cut at about 2700 feet elevation are well bedded graywacke sandstone and siltstone which strike about N. 45° W. and dip 40° NE. The rocks show variable amounts of fracturing and alteration. Fracture surfaces are generally coated with thin cover of manganese oxide. Fracture planes appear to strike mostly in a northerly direction parallel to the spur ridge and dip nearly vertical.

At a lower cut lying about 30 feet above and 50 feet north of the main discovery cut, flat lying sedimentary rocks appear to cap an altered volcanic(?) rock and the manganese occurs as lenses or pods of oxide-coated rhodonite boulders in this weathered "metavolcanic". Several boulders of oxide-coated rhodonite up to 4 feet in diameter have been rooted out of the bulldozer cut.

A few samples (ADG-21-24, P-33556-33559) taken in the "mineralized" appearing portions of the cuts and of float vein quartz showed nil in gold and silver.

- 2 -

A sample of the largely-oxidized rhodonite assayed 10.65% manganese and 39.62% SiO₂.

Bull Run Creek below the prospect has been placered to some extent in the past and may still contain some good placer ground.

The owner was advised that other lenses or pods of rhodonite may be found along the strike i.e.- to the northwest and southeast around the contour of the hillside. No manganese boulders were seen in place as the floor of the cut was covered with loose rock so the true strike of the occurrence could not be determined for certain.

Date visited: 3/29/69.

Reference: Riddle folio & geologic map by J.S. Diller & G. F. Kay, 1924.

Report by: Len Ramp 4/7/69.

* * * * *

RECEIVED
APR 9 1969

STATE DEPT. OF GEOLOGY
& MINERAL INDS.