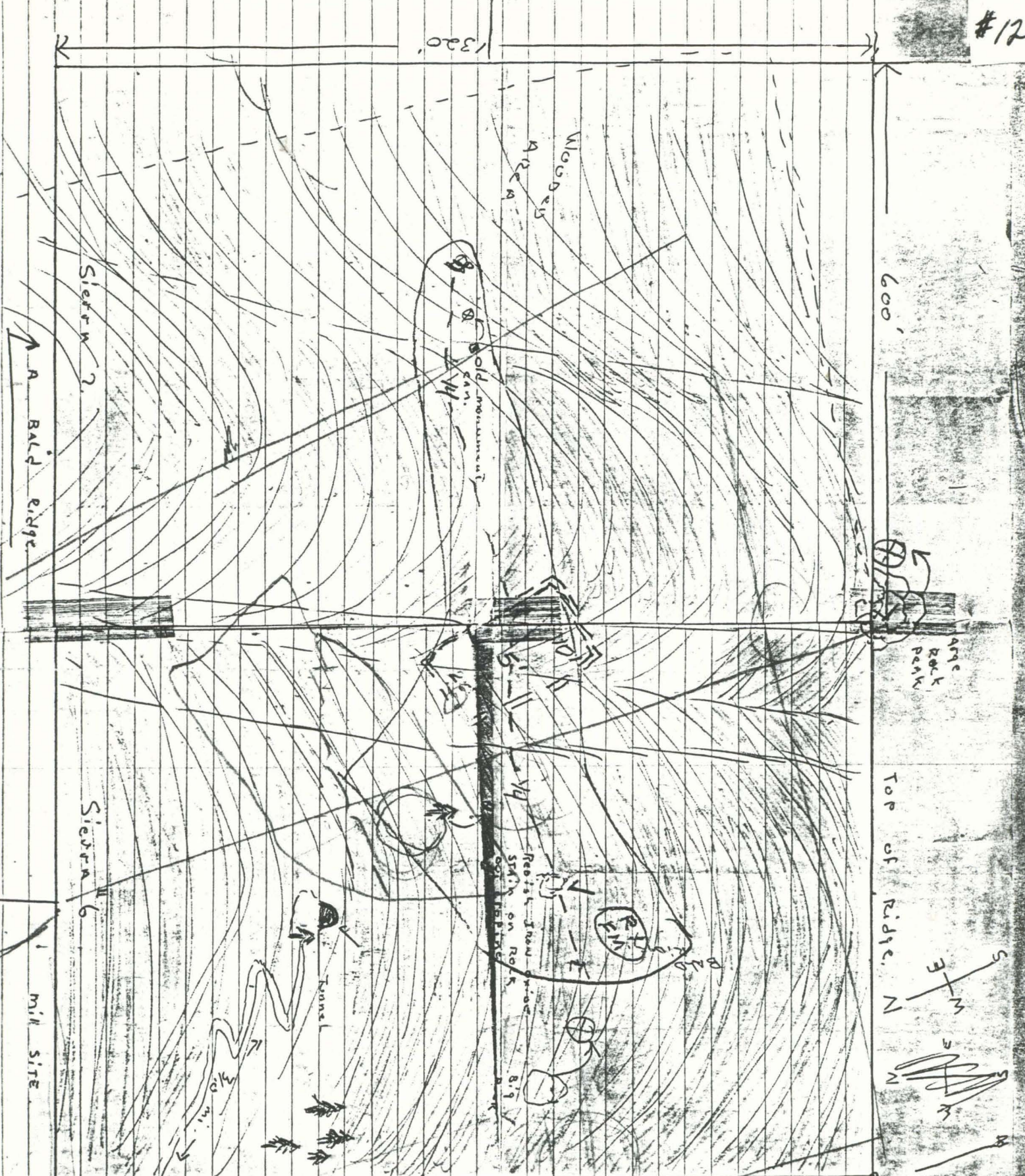


1320'

600'



Center Line View

Course A4

Outline Free Milling

Three feet depth

RX - Richest Exposed
FM - Free Milling

Woods Area

Blm. State

Sierra 2
A Bald ridge

Sierra 6

Mill Site

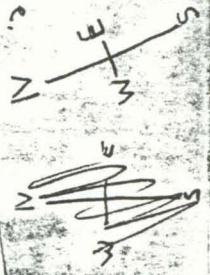
Tunnel

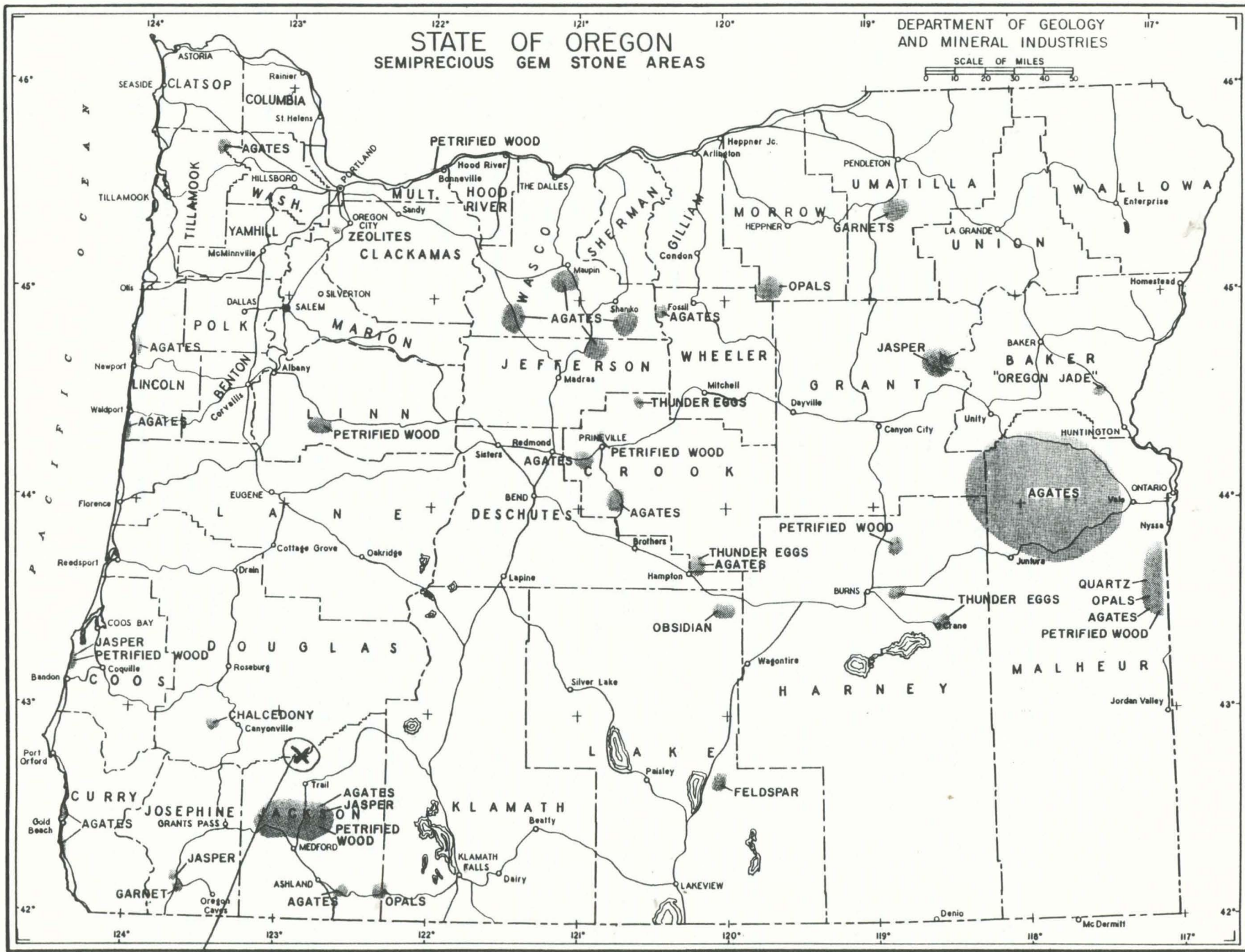
Old monument

Richest Exposed
Free Milling

Top of Ridge

Blm. State





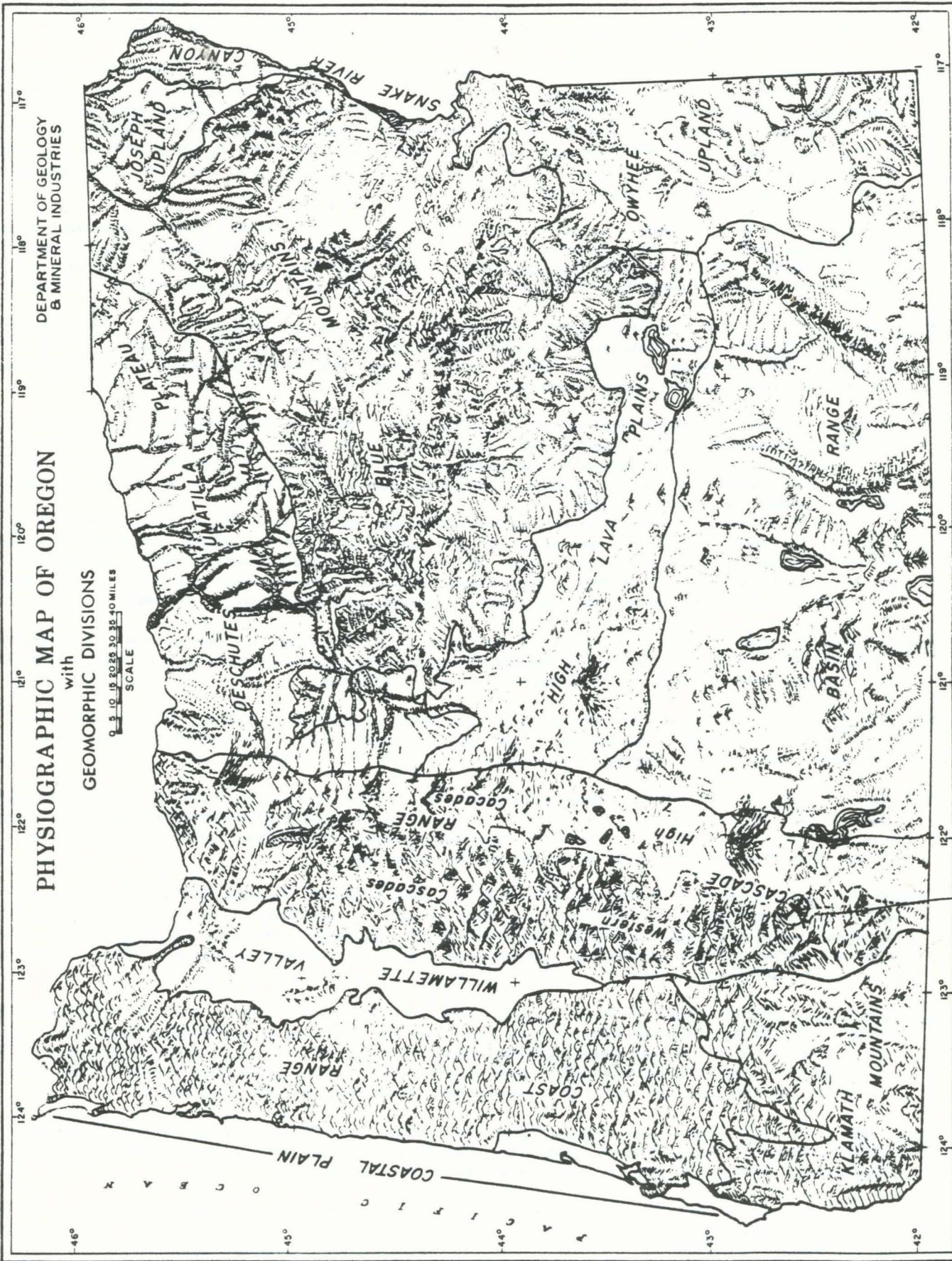
Blm
1022

#13

DEPARTMENT OF GEOLOGY
& MINERAL INDUSTRIES

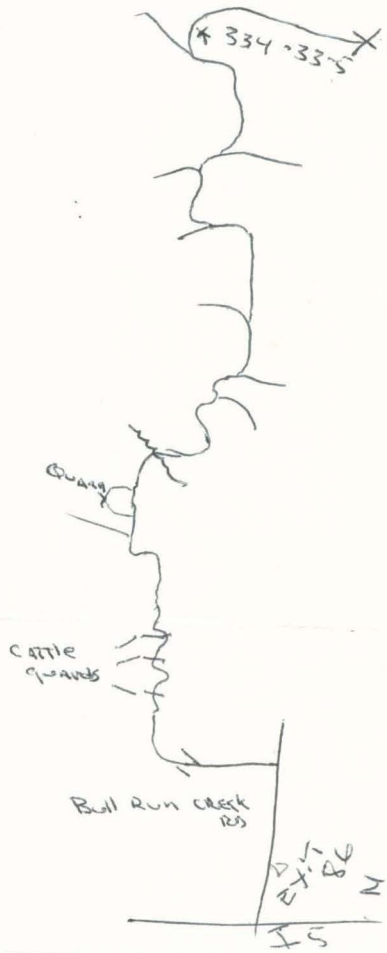
PHYSIOGRAPHIC MAP OF OREGON

with
GEOMORPHIC DIVISIONS

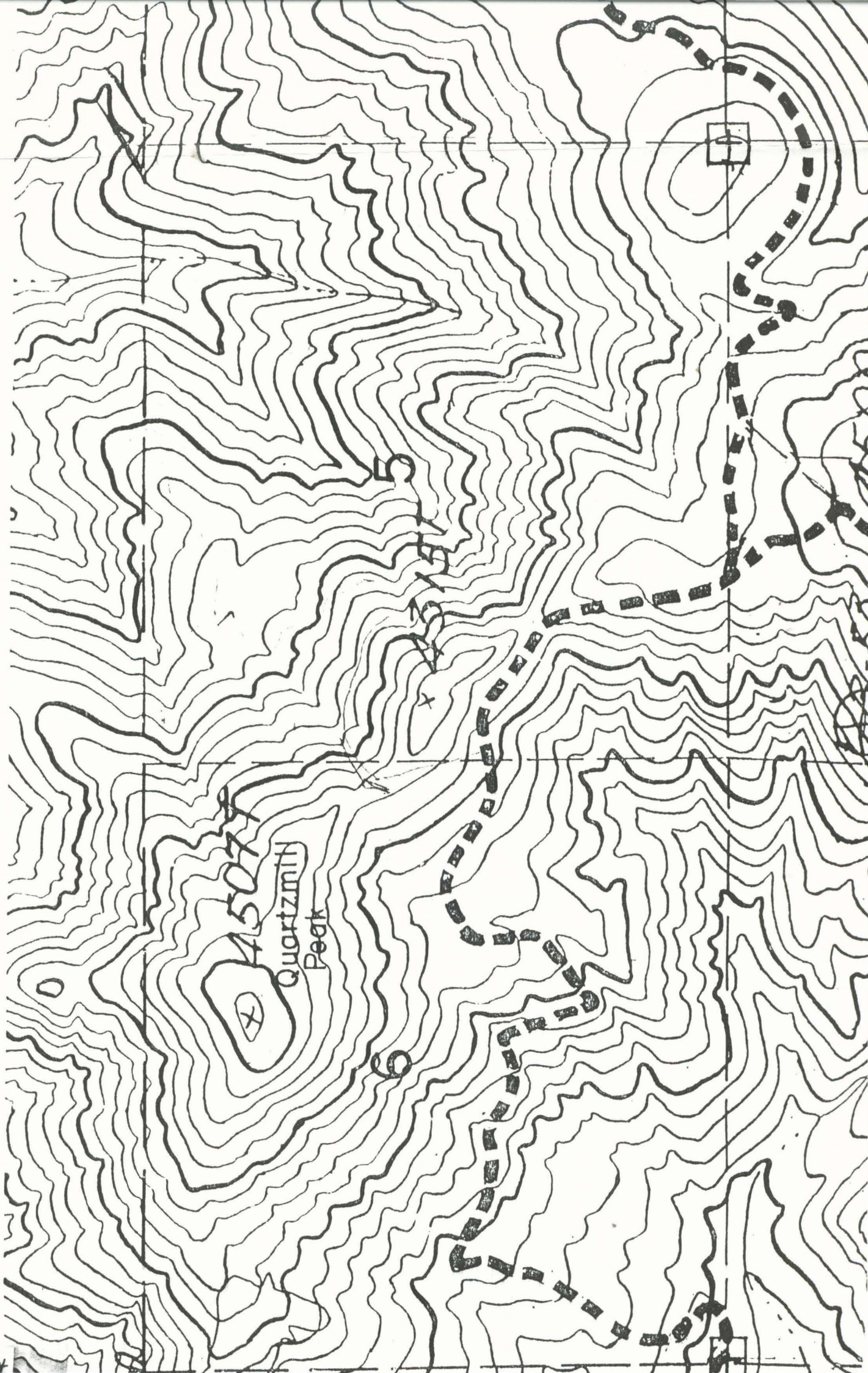


Geomorphic divisions modified from Dicken, Oregon Geography, 1950.

Blm
GSI



Sec Section 5



Quartzmih
Peak

4507

60

624

R. 4 W.



T. 32 S.

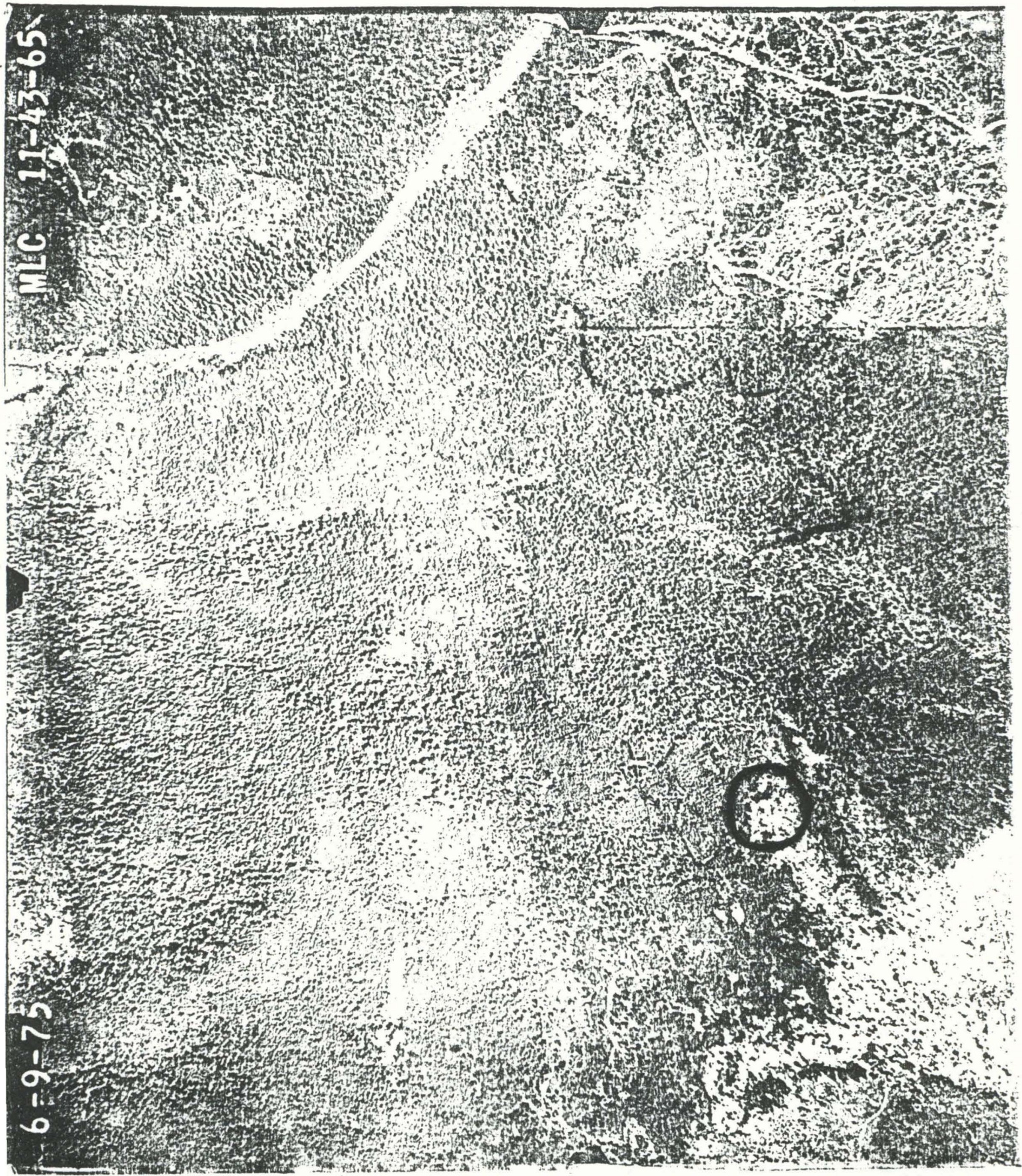
DOUGLAS CO.
JACKSON CO.

T. 32 S., R. 4 W.
T. 33 S., R. 4 W.

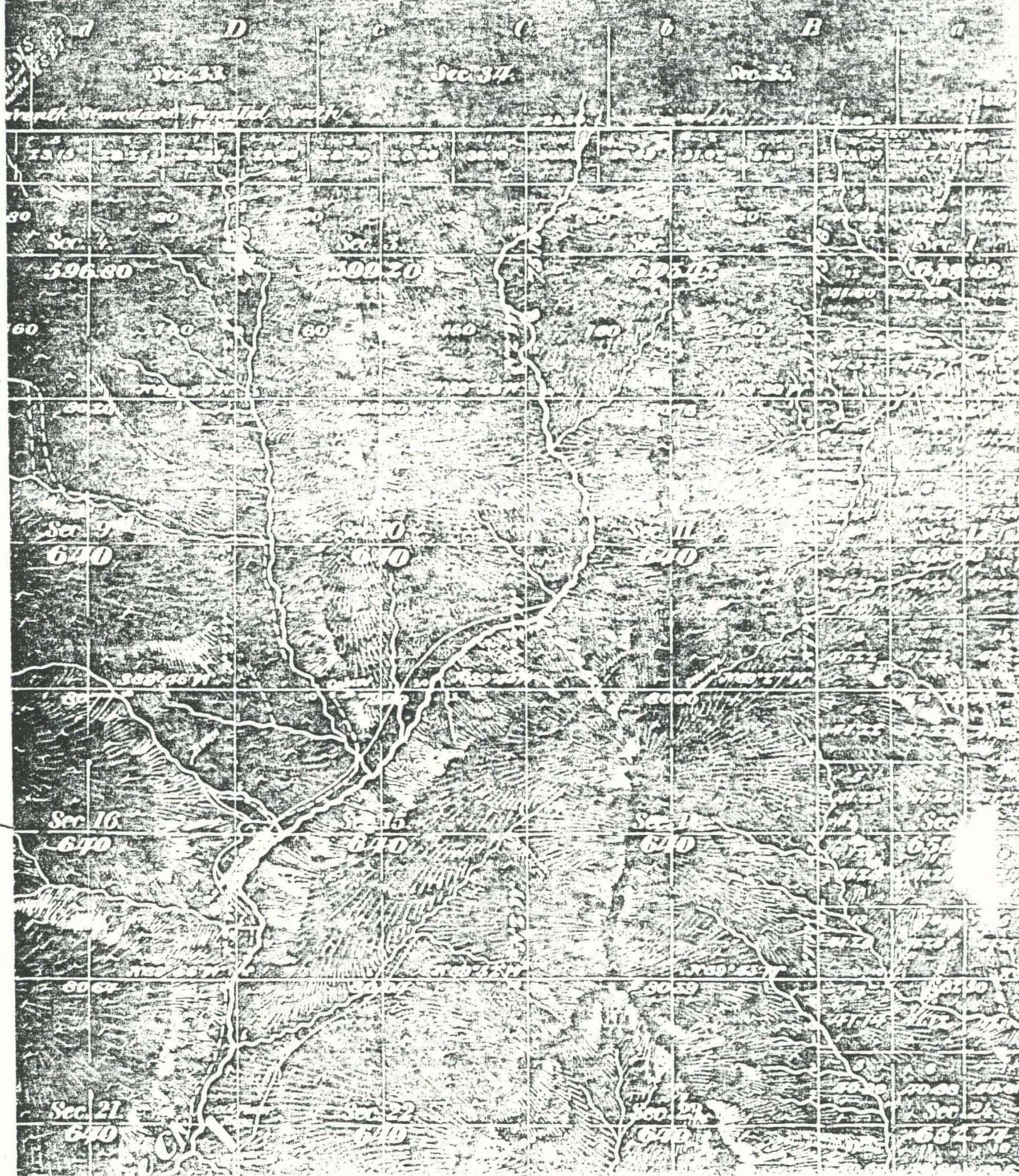
T. 33 S.

MLC 11-43-65

6-9-75



Section No 4 West of the Wilkes Meridian U



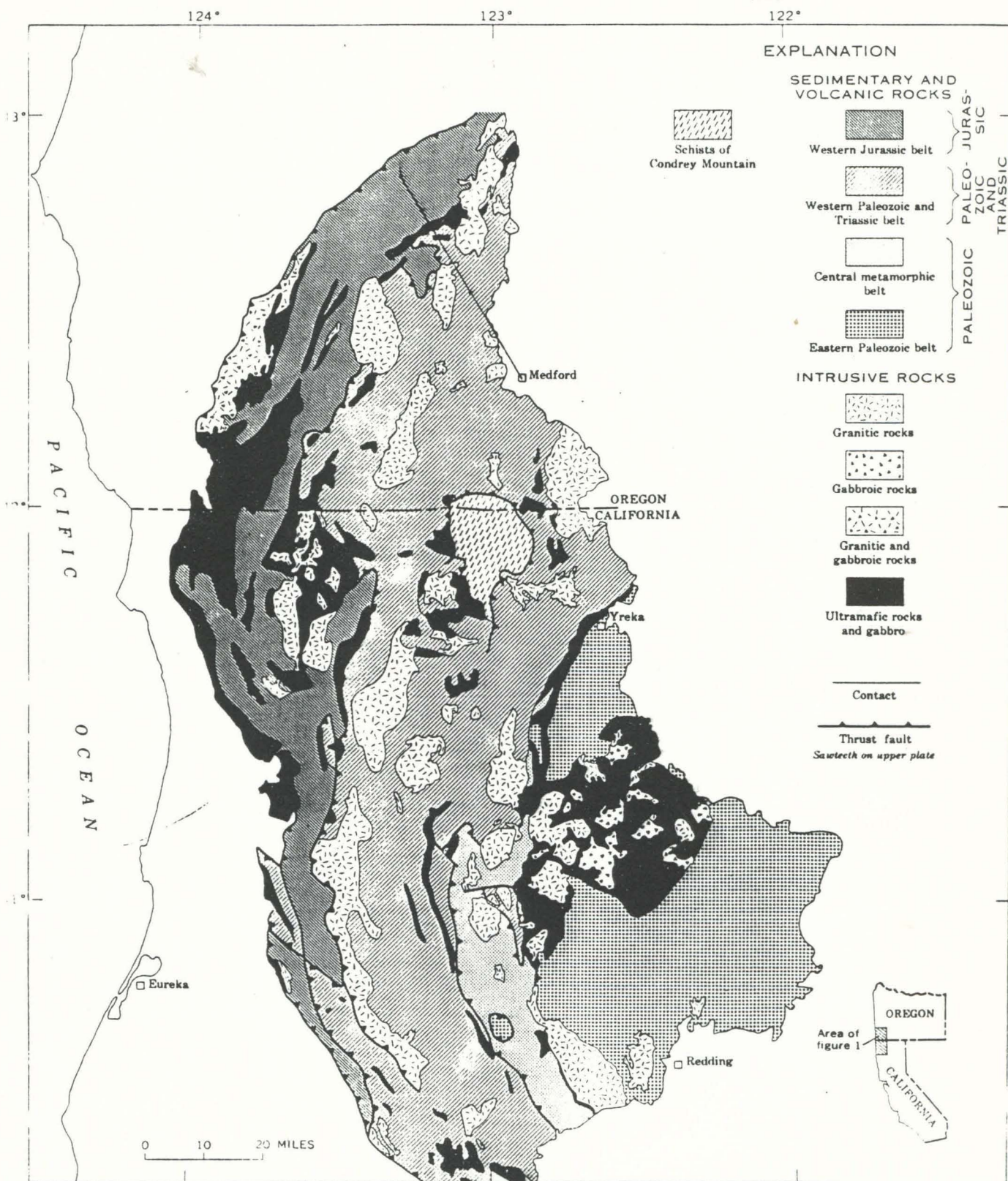


FIGURE 1.—General geology of the Klamath Mountains. Modified from Irwin (1964, fig. 1), Davis, Holdaway, Lipman, and Romey (1965, pl. 1), and Davis (1968, pl. 1).

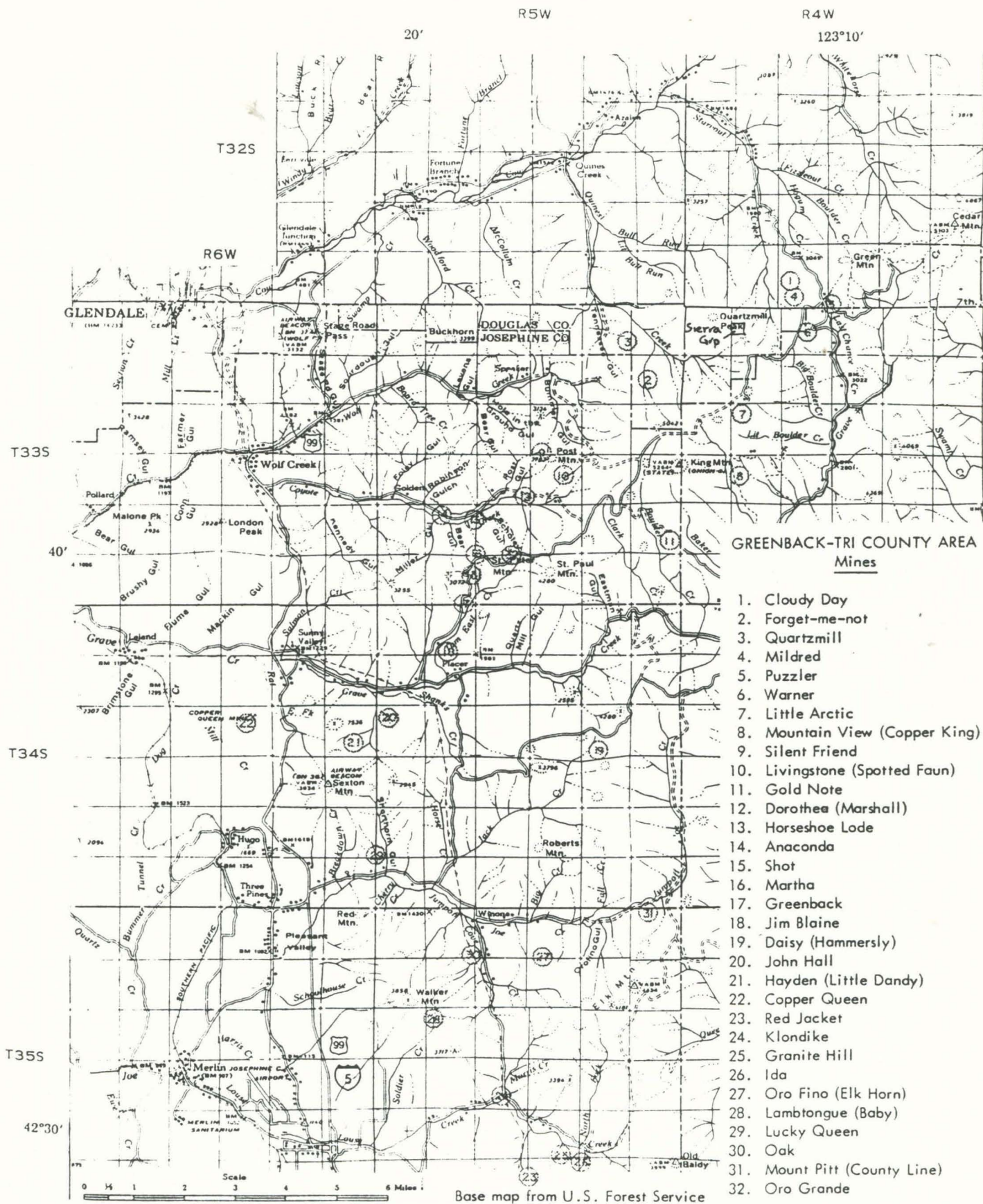


Figure 2. Index map showing the location of the Sierra claim group.⁶