

West Fork Station

Unclassified Dist. Douglas County, Oregon.
Sec. 1, T. 32 S., R. 8 W.

Samples.

- 19' Black shale. S. Nol shale
- Sample No 2 - 35th
- Massive Siliceous outcrop
- Sample No 4 - 41st
- Conglomerate
- Sample No 3 - 35th

Dothan Formation

1/2 Mile to West Fork station

COW CREEK

Signal 5216

B.M. 1029

Bridge

S.P.R.R.

14 miles to Glendale

Hotel and Post Office

Trail to Hayes Ridge

Barn

West Fork Cow Creek

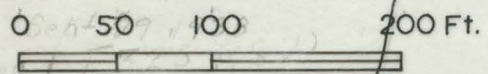
1100

1200

1100

N

SCALE



SEPT. 1938

Sec 1
T32S R8W

Barn



No 0-32
3-32-64
4-64-105
2-105-140
1-140-159

3
6
105
140

Hayes Ridge Trail
Jackass Prairie Trail

Hotel

Post
Office
Dothan

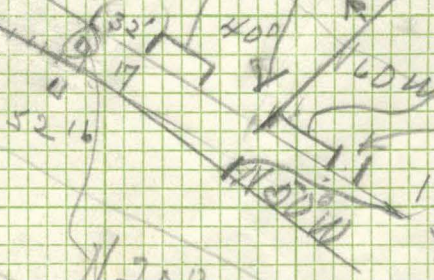
Mass
Silice
outcrop
No 4

No 3-32

No 2
35

Turn
Table

Cow Creek



West Fork Station →