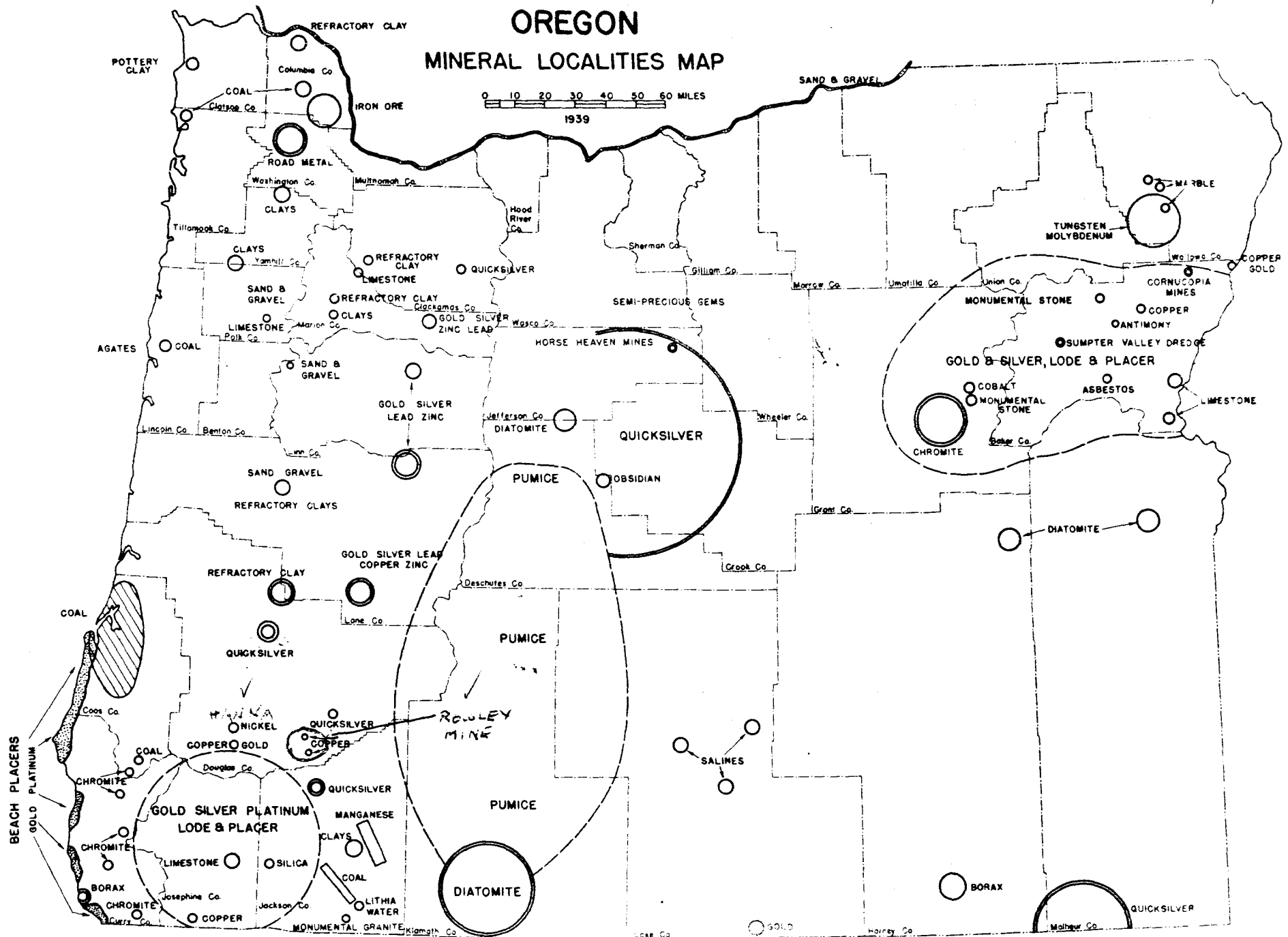


OREGON MINERAL LOCALITIES MAP



PREPARED BY O.S.H.D.

DATA FROM STATE DEPARTMENT OF GEOLOGY AND MINERAL INDUSTRIES

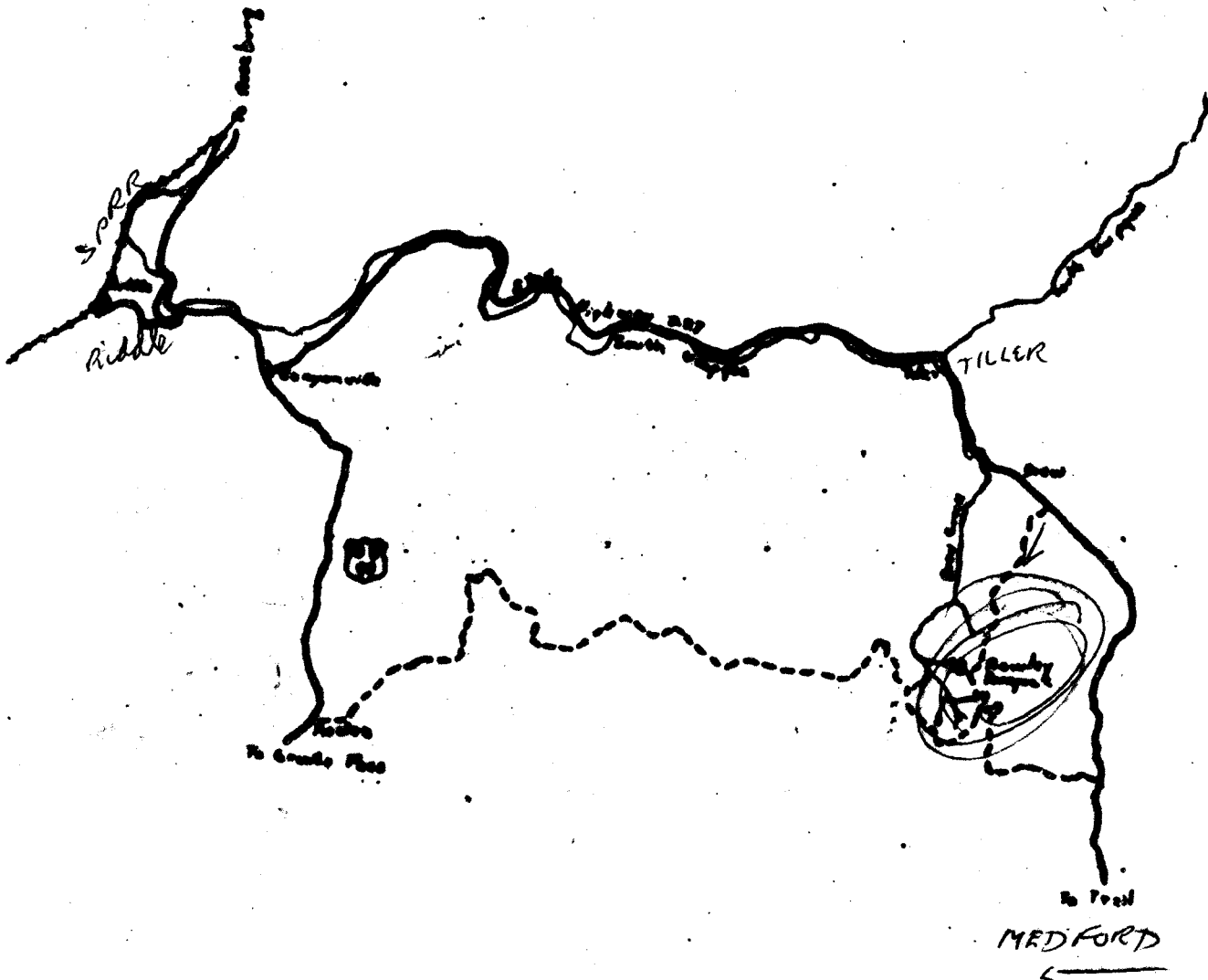


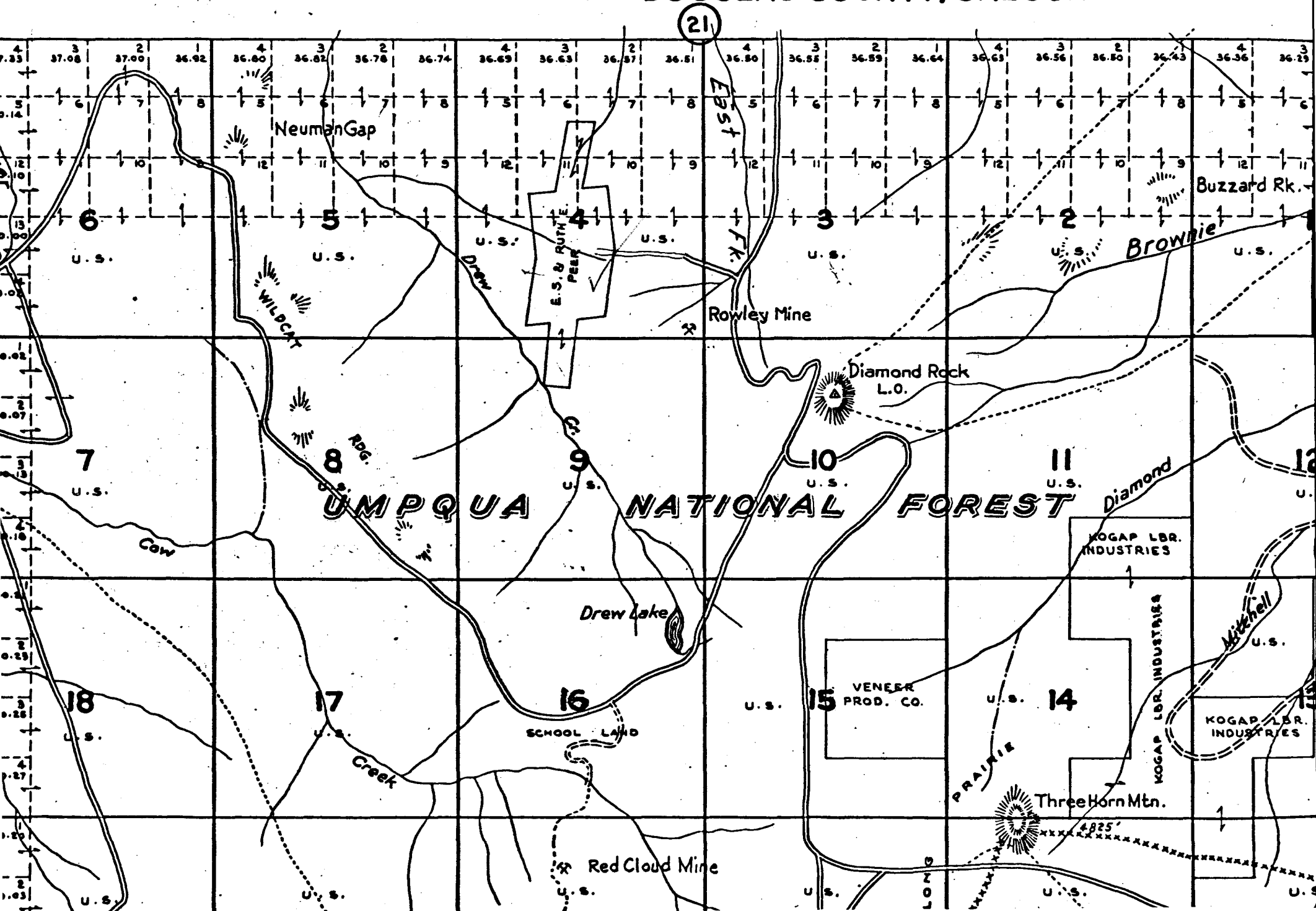
FIG 1
a

OCT. 1954

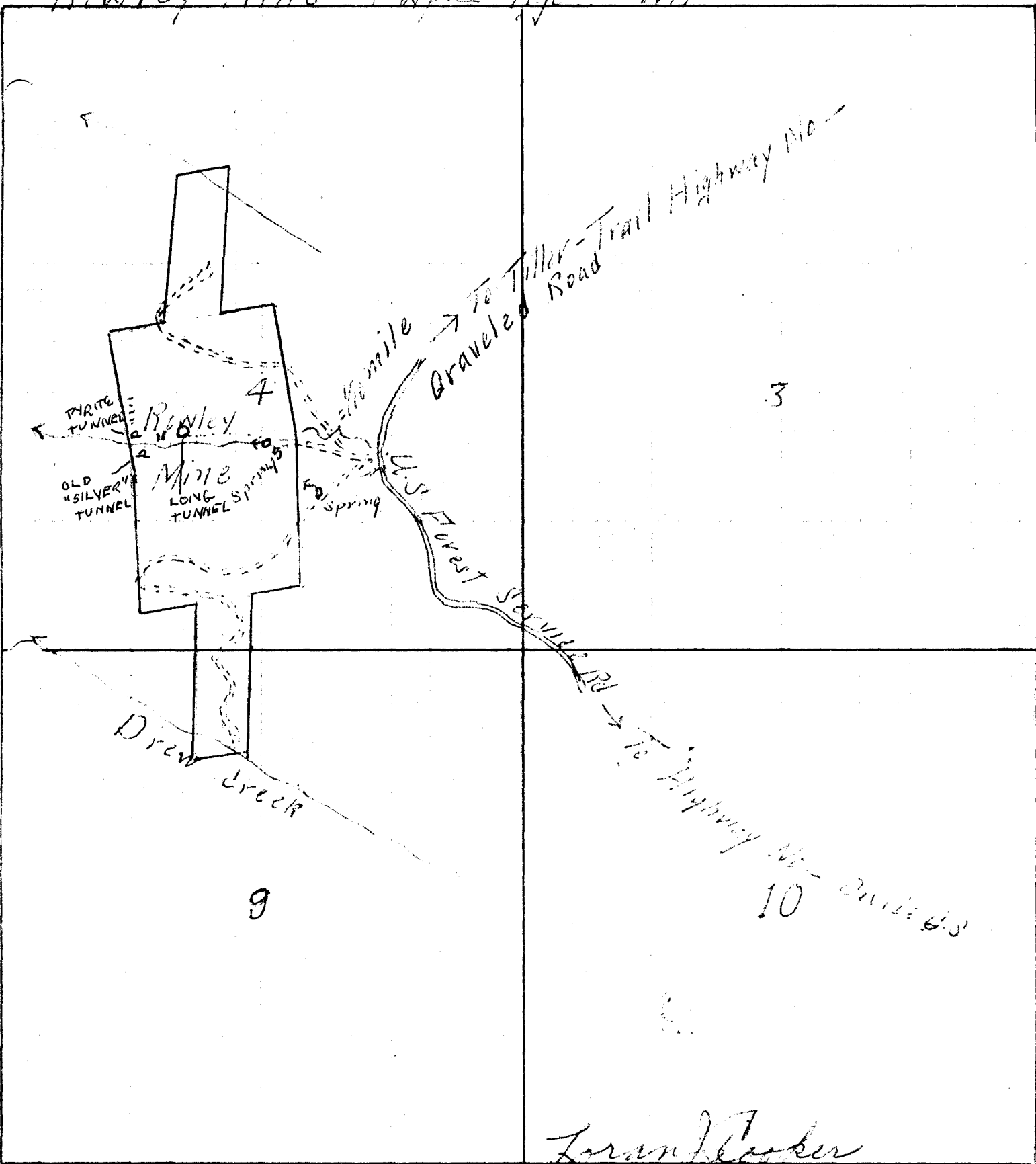
TOWNSHIP 32 S. RANGE 2 W.W.M.

DOUGLAS COUNTY, OREGON

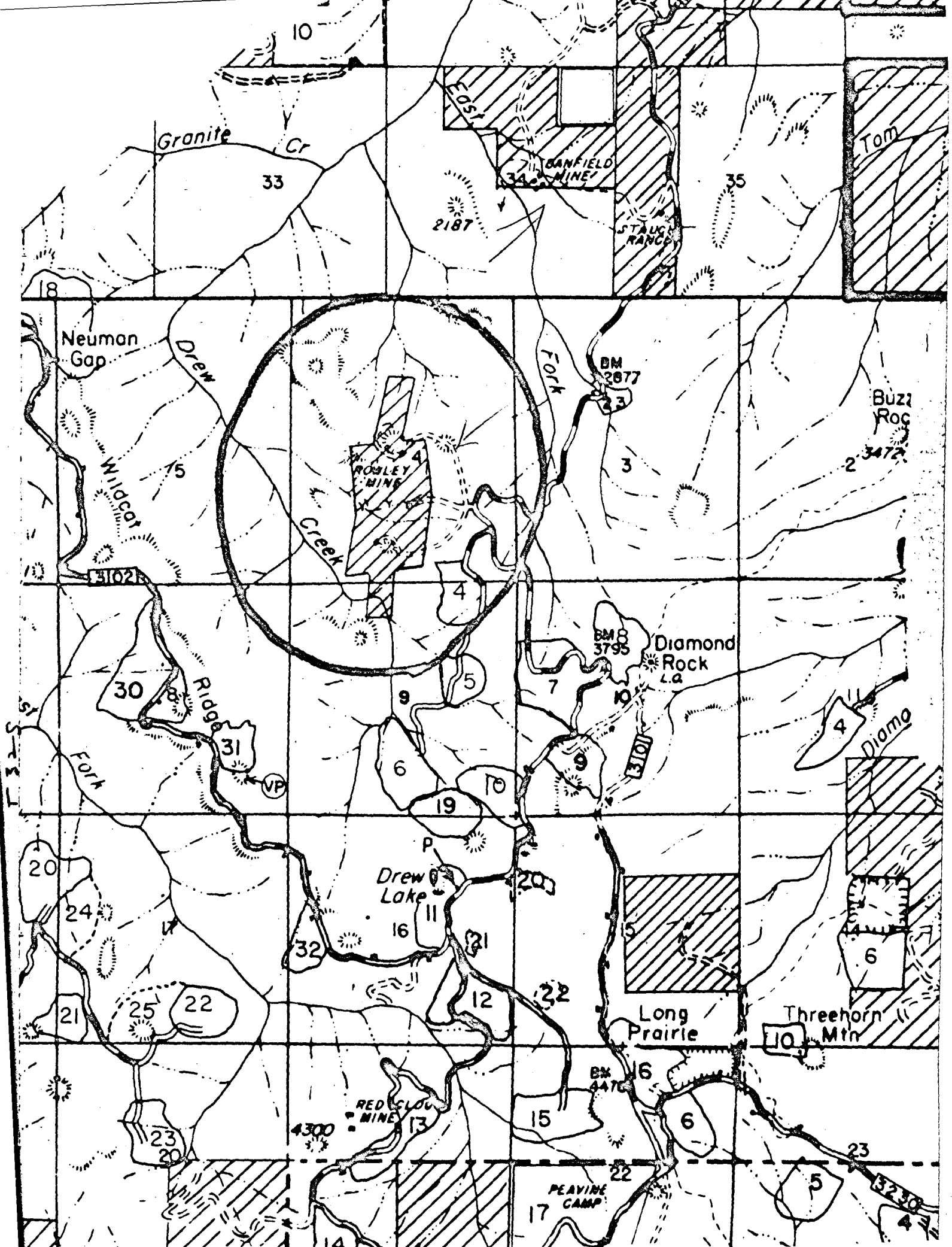
SCALE 2 IN. = 1 MILE



Bowley Mine Twp - Rje - W.N.



Loran Parker
1/30/43



Granite Cr

33

2187

EAST

GANFIELD MINE

35

Tom

Neuman Gap

Drew

FORK

BM 2677

Buzz Roc

Wildcat

15

Creek

ROSELY MINE

23

2-3472

3102

4

BMS 3795

Diamond Rock La

30

Ridge

9

5

7

4

Diamo

FORK

31

6

10

1301

EAST

20

24

Drew Lake

19

10

20

4

6

21

25

22

16

21

22

Long Prairie

Threehorn Mtn

23

20

4300

RED GLOW MINE

13

15

EX 2476

16

6

23

RICHTER

14

PEAVINE CAMP

17

22

10

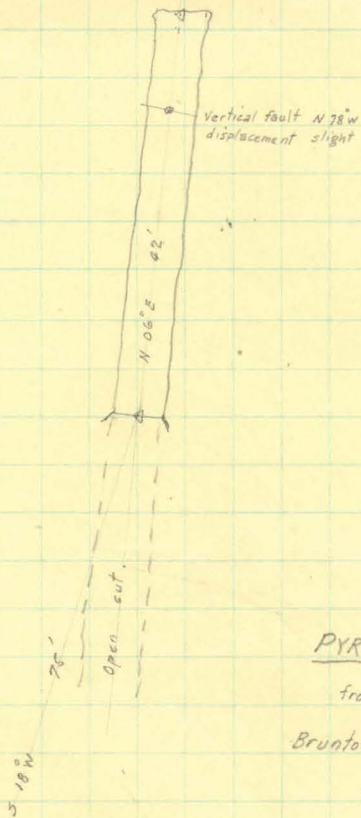
5

3230

4

5' sample of hi-grade pyrite

North.



ROWLEY MINE

PYRITE ADITS (450' or 550' (?) down stream
from main tunnel.

Brunton & Pace Traverse Oct. 8, 1943 FWL & RCT.

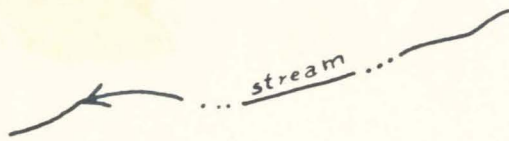
Scale 20' = 1 inch



23



5' sample of sulphides
Au ... 0.01 oz
Ag ... 1.03 oz
Cu ... 1.1 %
Zn ... 7.3 %



ROWLEY MINE

PYRITE ADITS (450' or 550'?)

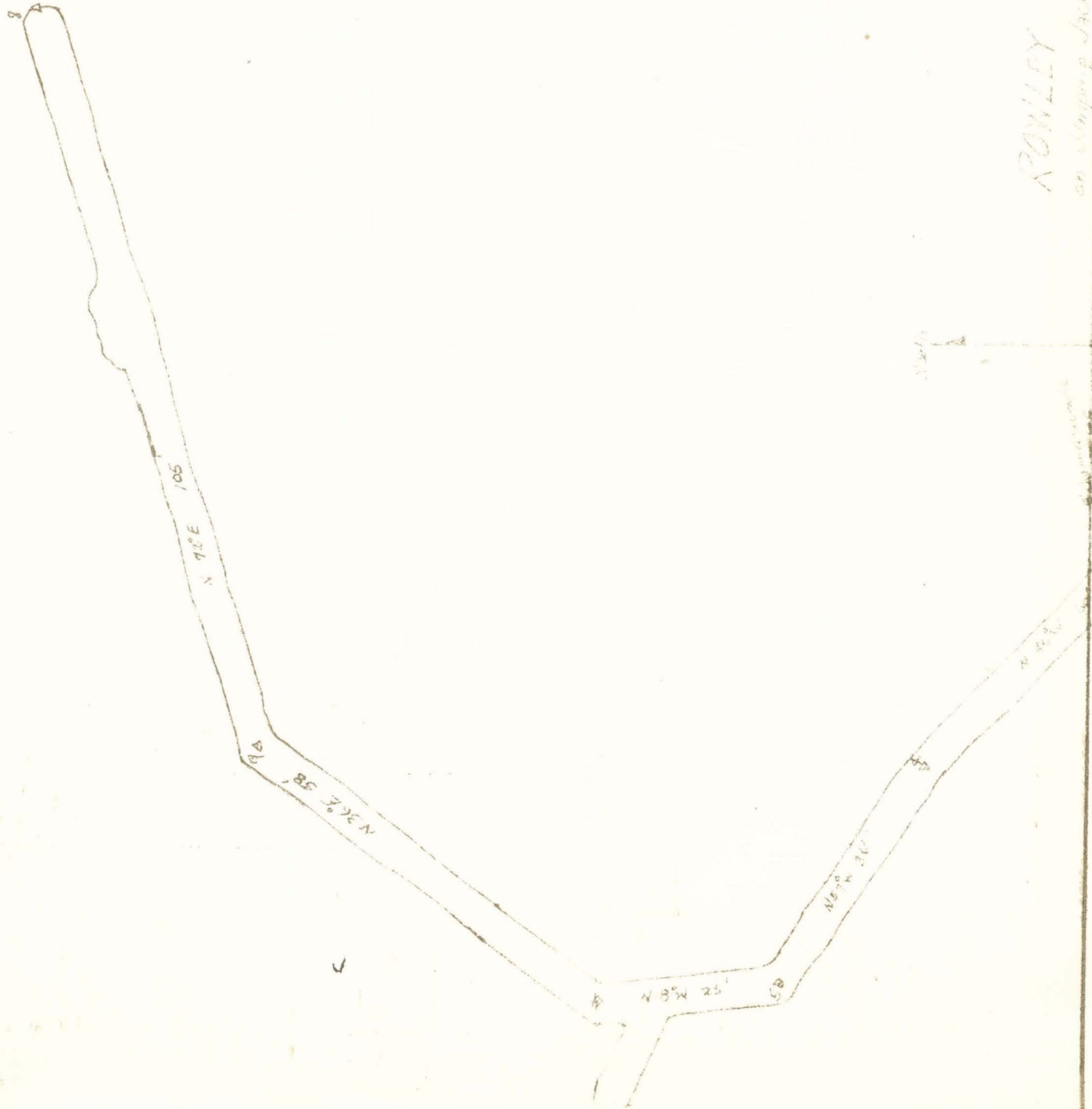
downstream from main tunnel

Brunton & pace traverse - Oct. 1943

RCT & FWL

Scale: 20' = 1"

ROWLEY TUNNEL
on Company Jack & Chain



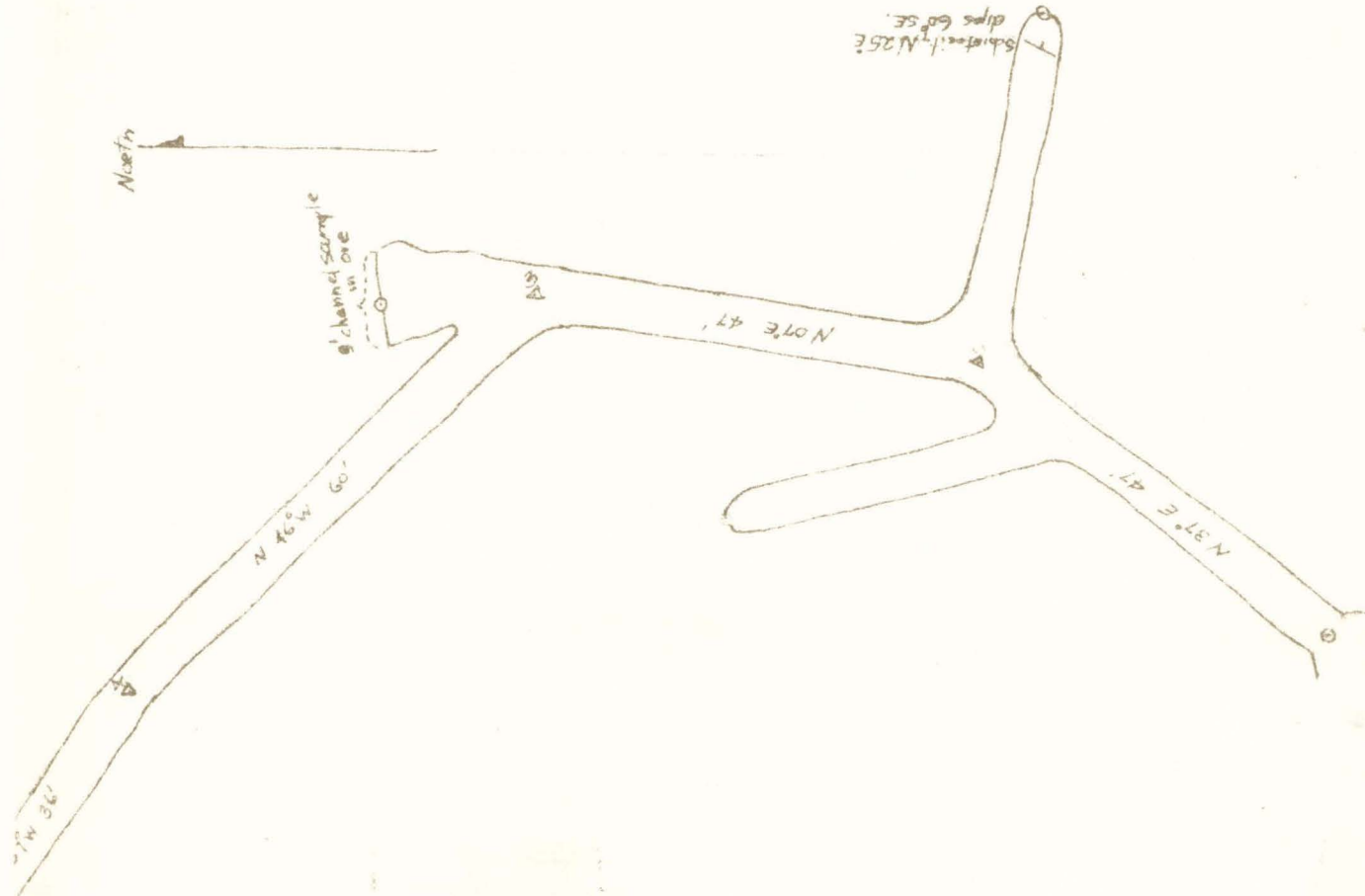
ROWLEY TUNNEL

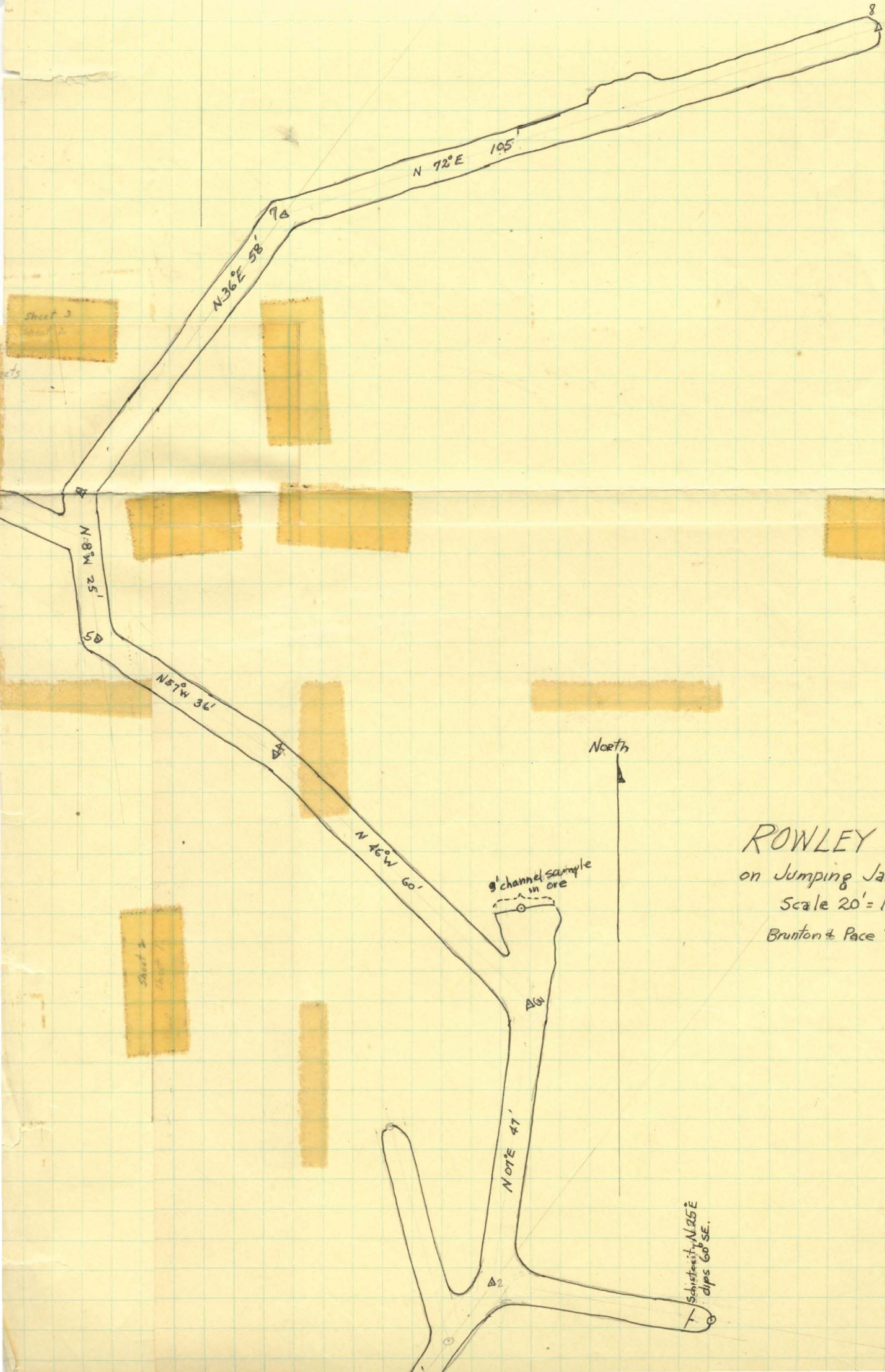
on Jumping Jack #6 claim

Scale 20' = 1 inch

Brunton + Pace Traverse Oct 8, 1913

R.C.T. + F.W.L.





ROWLEY TUNNEL
 on Jumping Jack #6 claim
 Scale 20' = 1 inch
 Brunton & Pace Traverse Oct.
 R.C.T. + F

Christiana, N 25° E
 dips 60° SE.

Sheet 3

Sheet 4

9' channel sample in ore

North

N 36° E 58' 7A

N 72° E 105'

N 8° N 25' 8B

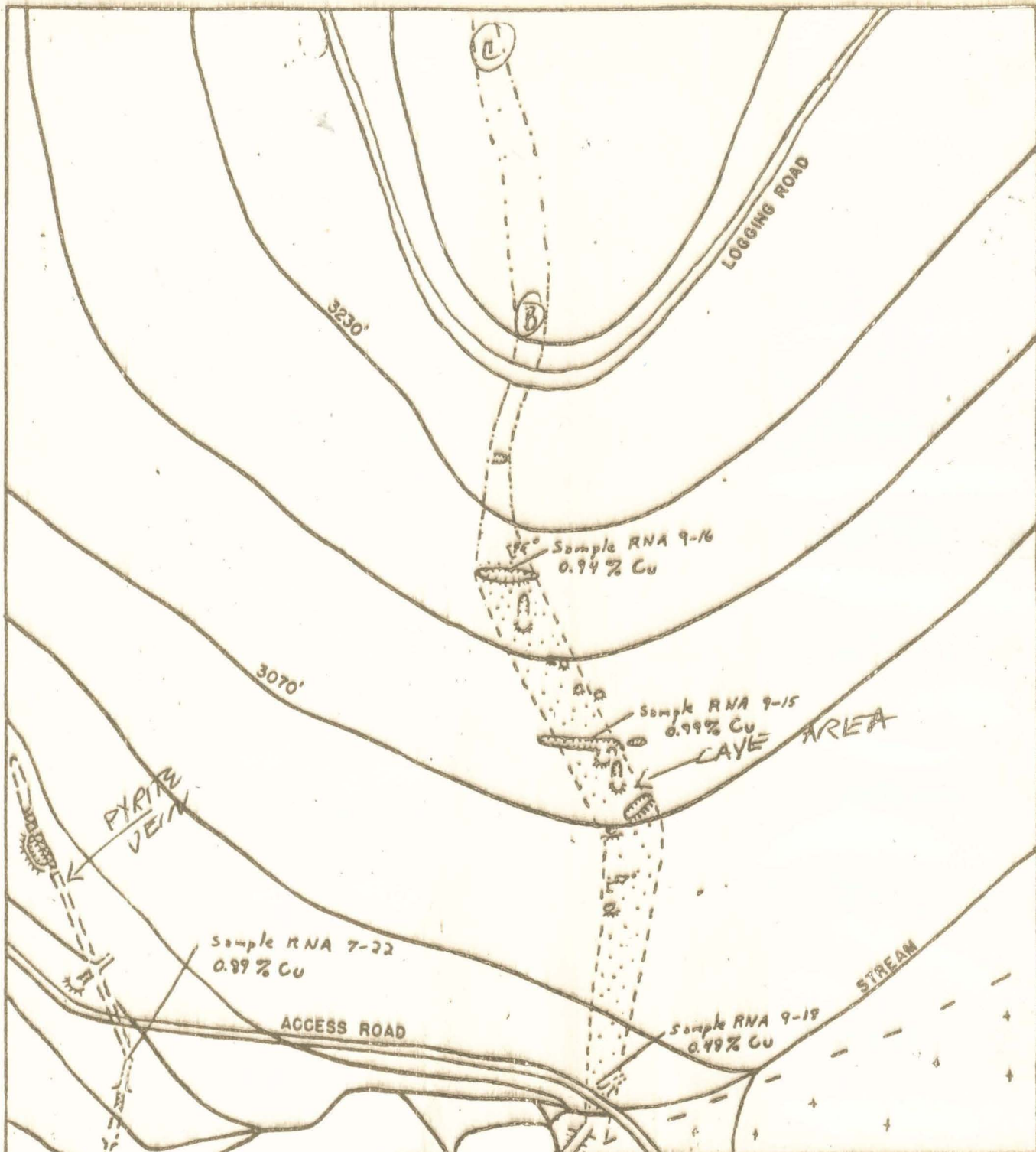
N 57° W 36' 8A

N 46° W 60'

N 07° E 47' A6

A2

8



BUREAU OF MINES

ROWLEY GROUP

DOUGLAS COUNTY, OREGON

PAGE AND COMPASS SKETCH

SCALE

80 FOOT CONTOUR INTERVAL-ANEROID ELEVATION

E.C. PATTEE

MAY 21, 1954

- ⊠ FISSURE VEIN OUTCROP
- INFERRED FISSURE VEIN BOUNDARY
- + --- BOUNDARY OF BARREN ALTERED SCHIST
- ⊞ COPPER BEARING ZONE
- SCHIST
- ⊕ METAVOLCANICS

Fig 3C

E-2050-8

7015-2-12 (200)

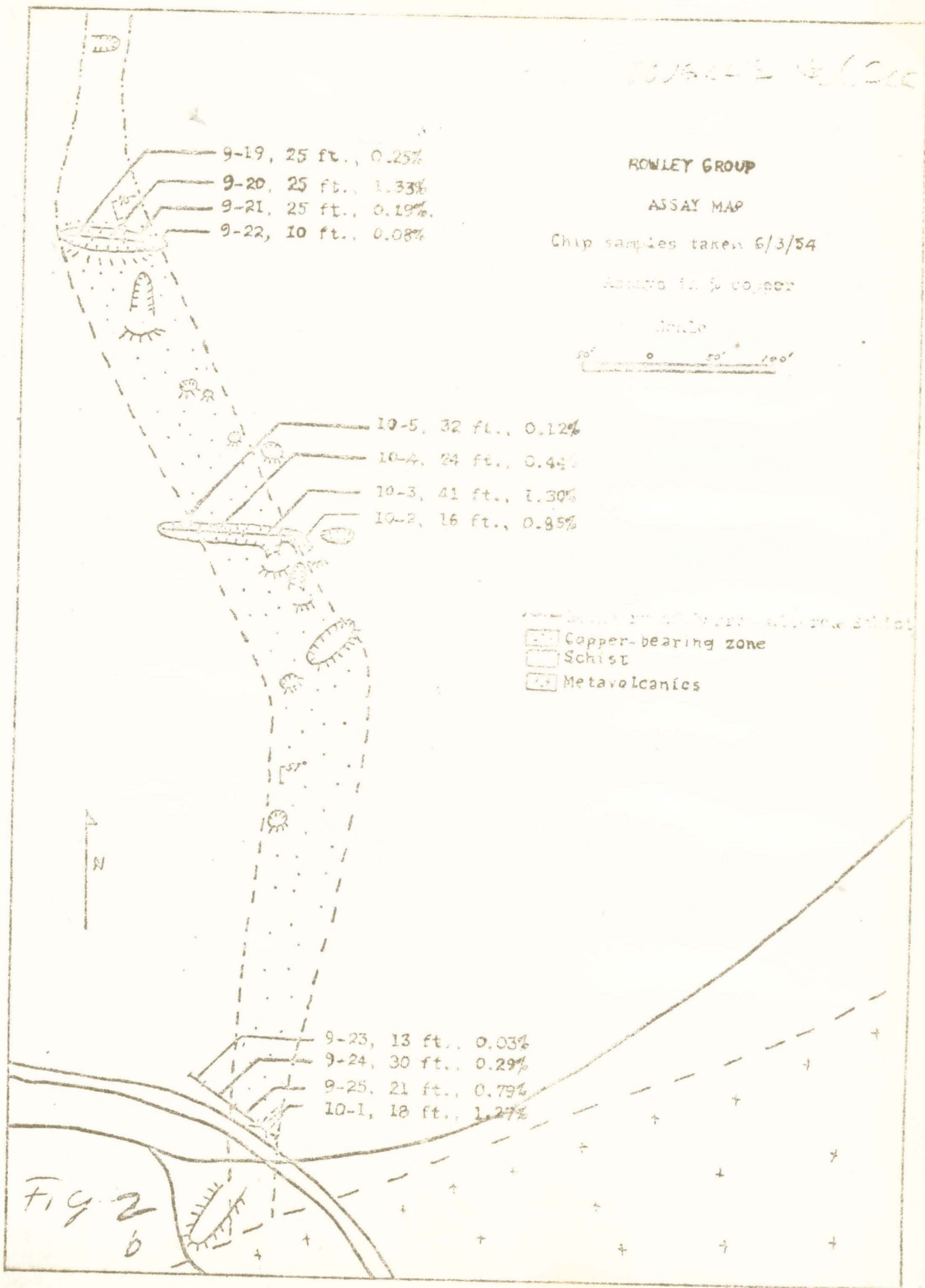
ROWLEY GROUP

ASSAY MAP

Chip samples taken 6/3/54

Assays in % copper

Scale



- 9-19, 25 ft., 0.25%
- 9-20, 25 ft., 1.33%
- 9-21, 25 ft., 0.19%
- 9-22, 10 ft., 0.08%

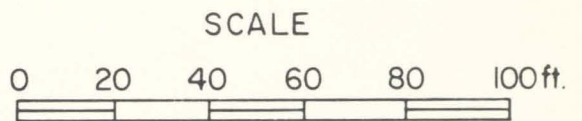
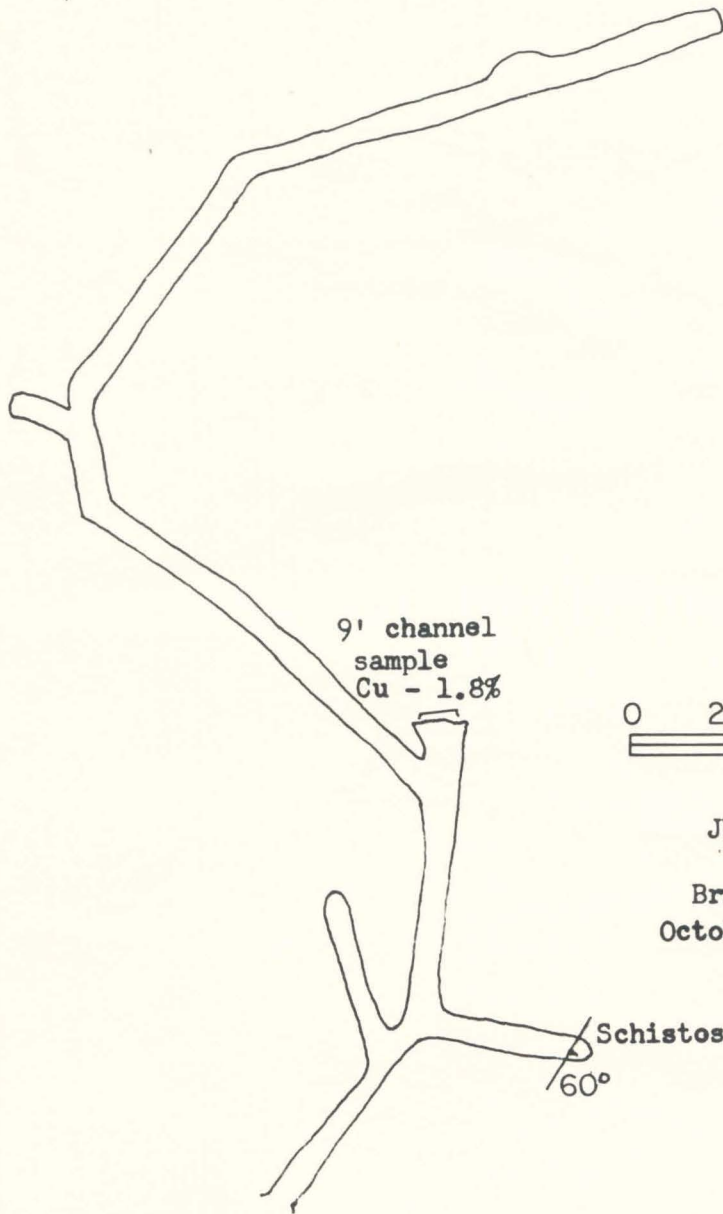
- 10-5, 32 ft., 0.12%
- 10-4, 24 ft., 0.44%
- 10-3, 41 ft., 1.30%
- 10-2, 16 ft., 0.85%

- 9-23, 13 ft., 0.03%
- 9-24, 30 ft., 0.29%
- 9-25, 21 ft., 0.79%
- 10-1, 18 ft., 1.27%

- Boundary of Rowley Group - all row schist
- ▨ Copper-bearing zone
- Schist
- ⊙ Metavolcanics

Fig 2
6

7015-2-12



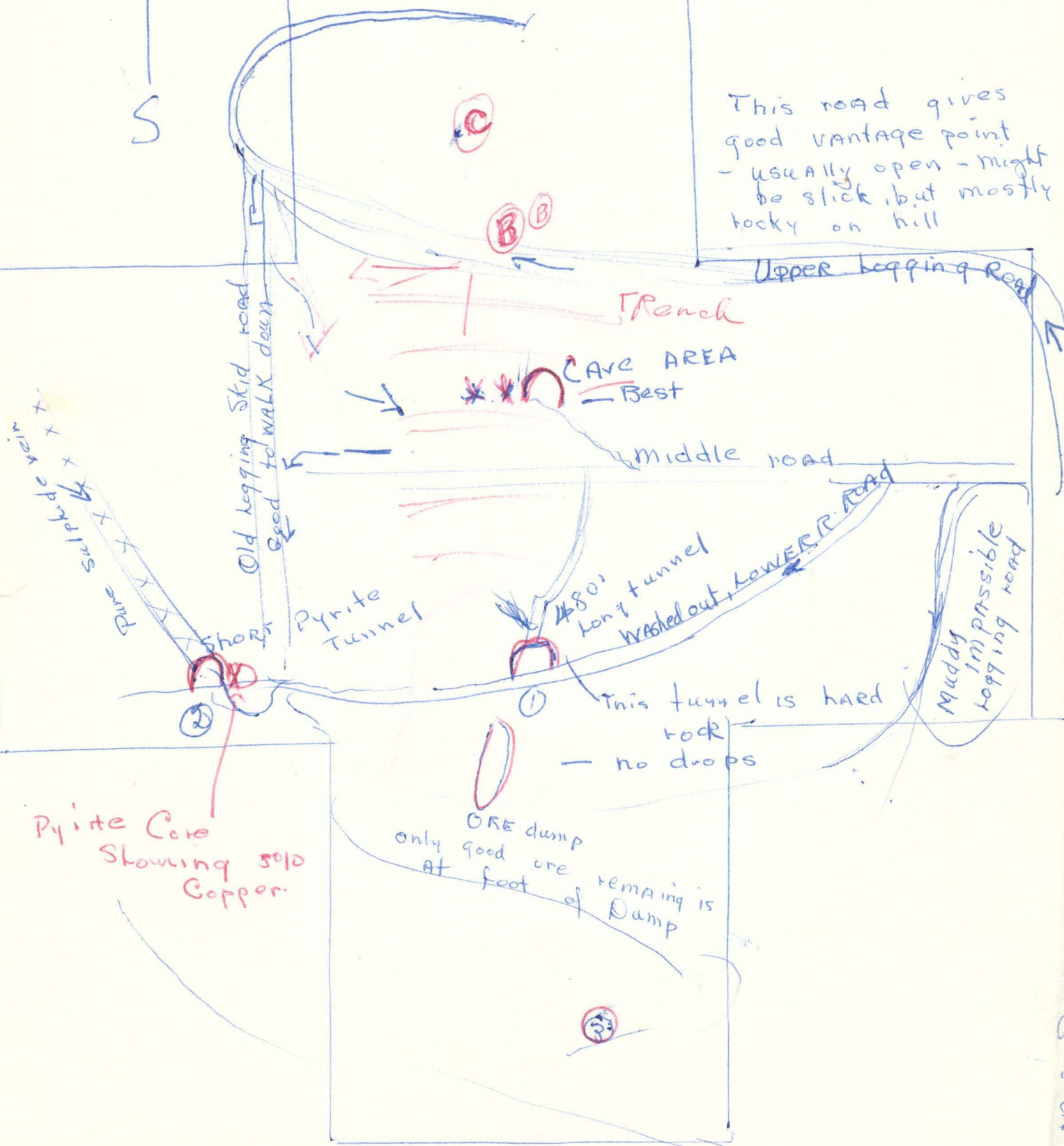
JUMPING JACK #6 CLAIM

Brunton and Pace Traverse
October 8, 1943 - RCT and FWL

Rowley Tunnel, Tiller-Drew District, Douglas County, Oregon.

This is INACCURATE
 Sketch of 8 claims
 Rowley Mine
 To indicate Roads
 And Drill Sites

This road gives
 good vantage point
 - usually open - might
 be slick, but mostly
 rocky on hill



Pyrite Core
 Showing 50%
 Copper.

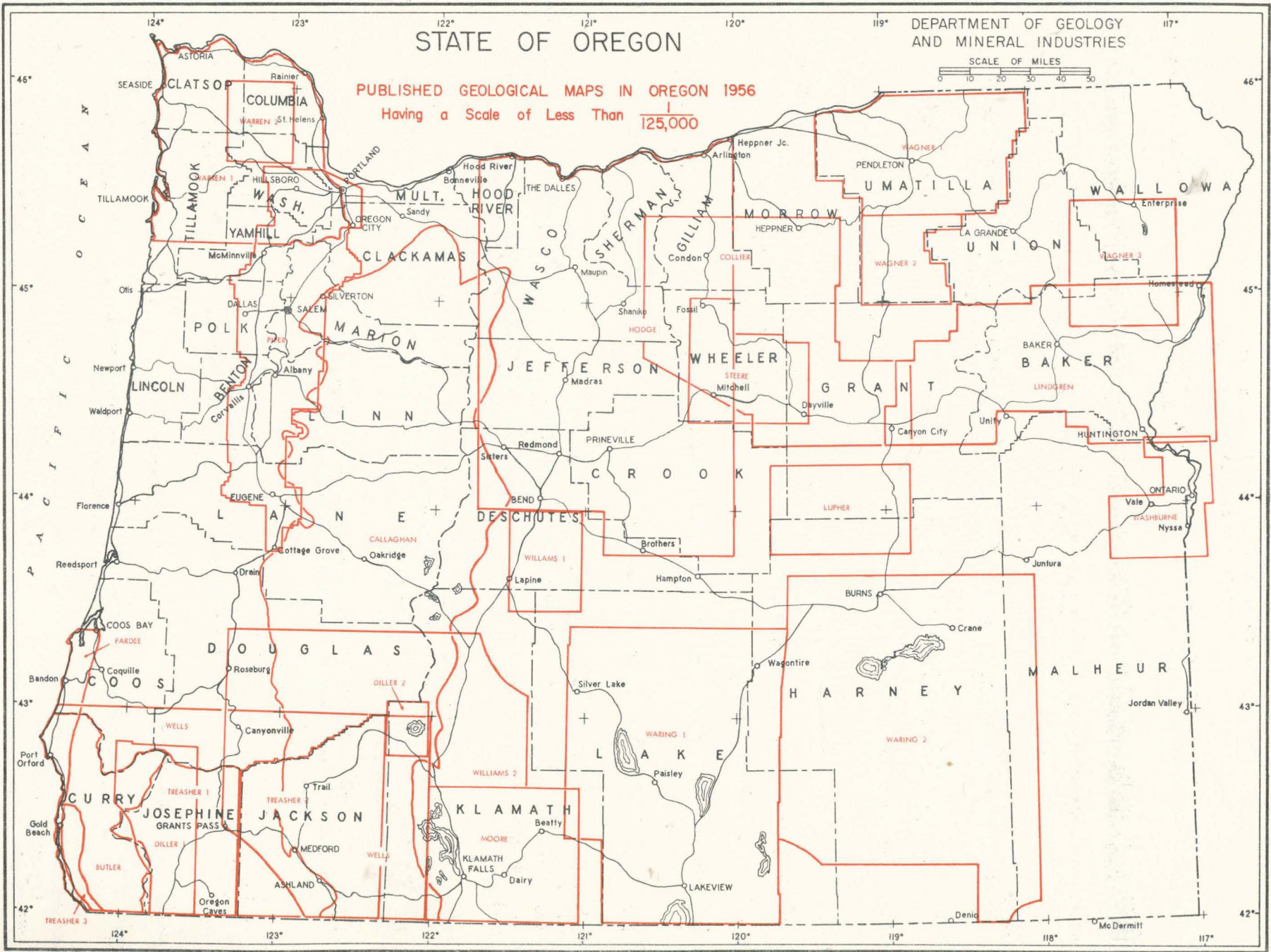
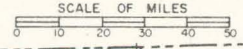
ORE dump
 only good ore
 at foot of
 remaining is
 Dump

200' N. of Drew Creek

STATE OF OREGON

DEPARTMENT OF GEOLOGY
AND MINERAL INDUSTRIES

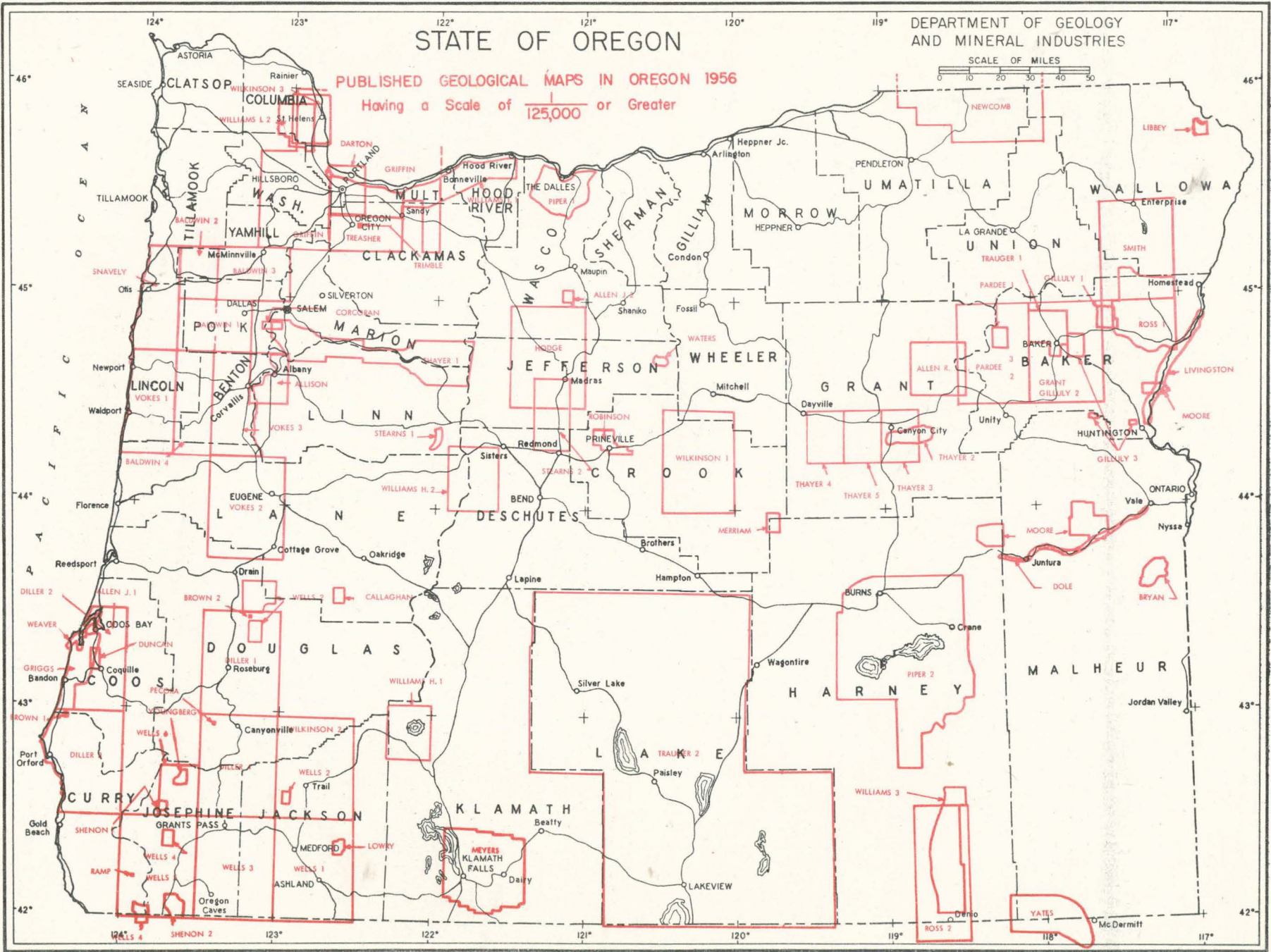
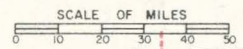
PUBLISHED GEOLOGICAL MAPS IN OREGON 1956
Having a Scale of Less Than $\frac{1}{125,000}$



STATE OF OREGON

DEPARTMENT OF GEOLOGY
AND MINERAL INDUSTRIES

PUBLISHED GEOLOGICAL MAPS IN OREGON 1956
Having a Scale of $\frac{1}{125,000}$ or Greater



A
C
T
I
F
I
C

O
C
E
A
N

C
O
O
S

C
U
R
R
Y

T
I
L
A
M
O
O
K

L
I
N
C
O
L
N

L
I
N
C
O
L
N

C
O
O
S

C
U
R
R
Y

T
I
L
A
M
O
O
K

L
I
N
C
O
L
N

L
I
N
C
O
L
N

C
O
O
S

C
U
R
R
Y

W
A
S
C
O

W
A
S
C
O

W
A
S
C
O

W
A
S
C
O

W
A
S
C
O

M
U
L
T
I
C
O
U
N
T
Y

M
U
L
T
I
C
O
U
N
T
Y

M
U
L
T
I
C
O
U
N
T
Y

M
U
L
T
I
C
O
U
N
T
Y

M
U
L
T
I
C
O
U
N
T
Y

H
O
O
D
R
I
V
E
R

H
O
O
D
R
I
V
E
R

H
O
O
D
R
I
V
E
R

H
O
O
D
R
I
V
E
R

H
O
O
D
R
I
V
E
R

W
A
S
C
O

W
A
S
C
O

W
A
S
C
O

W
A
S
C
O

W
A
S
C
O

S
H
E
R
M
A
N

S
H
E
R
M
A
N

S
H
E
R
M
A
N

S
H
E
R
M
A
N

S
H
E
R
M
A
N

M
O
R
R
O
W

M
O
R
R
O
W

M
O
R
R
O
W

M
O
R
R
O
W

M
O
R
R
O
W

M
O
R
R
O
W

M
O
R
R
O
W

M
O
R
R
O
W

M
O
R
R
O
W

M
O
R
R
O
W

U
M
A
T
I
L
L
A

U
M
A
T
I
L
L
A

U
M
A
T
I
L
L
A

U
M
A
T
I
L
L
A

U
M
A
T
I
L
L
A

U
M
A
T
I
L
L
A

U
M
A
T
I
L
L
A

U
M
A
T
I
L
L
A

U
M
A
T
I
L
L
A

U
M
A
T
I
L
L
A

W
A
L
L
O
W
A

W
A
L
L
O
W
A

W
A
L
L
O
W
A

W
A
L
L
O
W
A

W
A
L
L
O
W
A

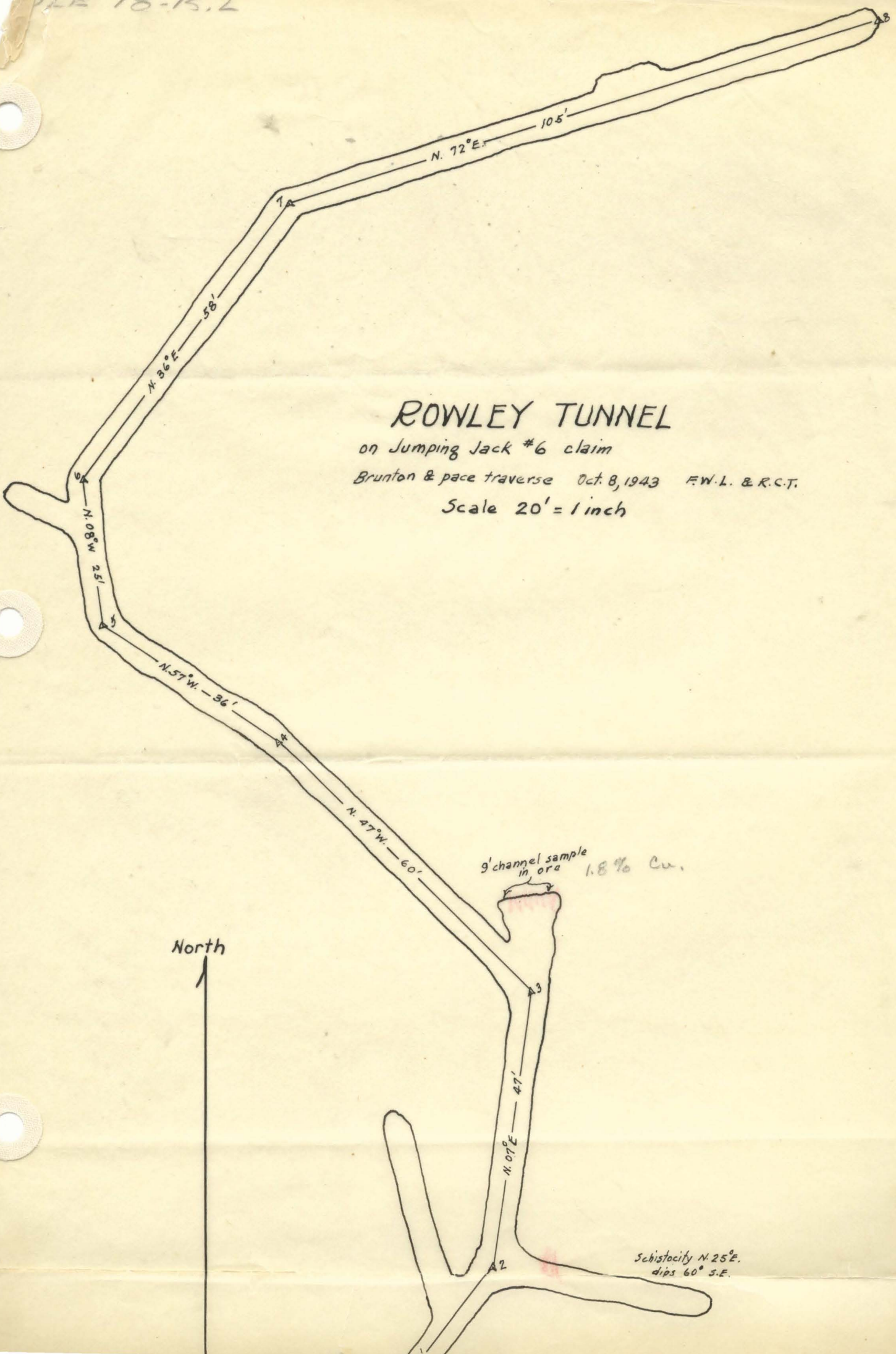
W
A
L
L
O
W
A

W
A
L
L
O
W
A

W
A
L
L
O
W
A

W
A
L
L
O
W
A

W
A
L
L
O
W
A



ROWLEY TUNNEL

on Jumping Jack #6 claim

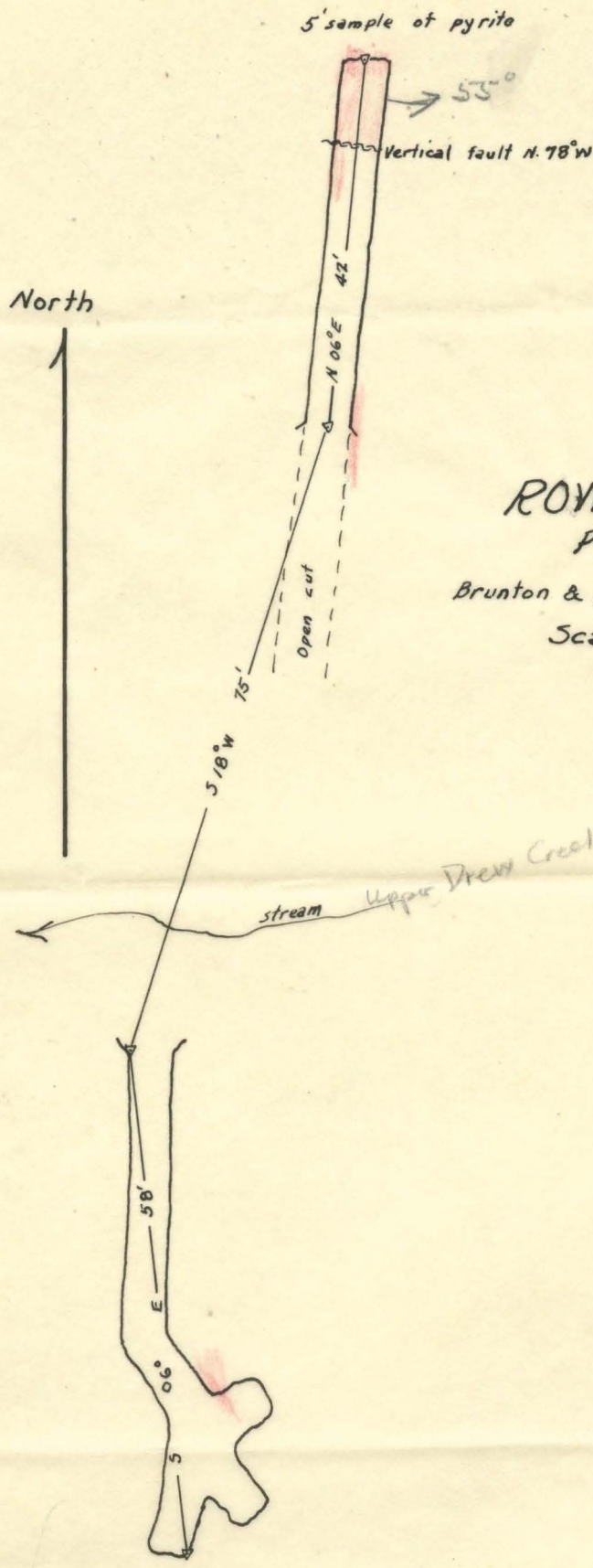
Brunton & pace traverse Oct. 8, 1943 F.W.L. & R.C.T.

Scale 20' = 1 inch

North
↑

9' channel sample
in ore 1.8% Cu.

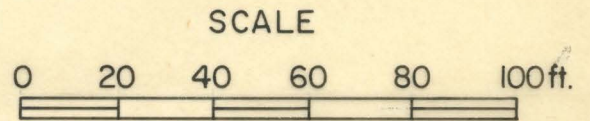
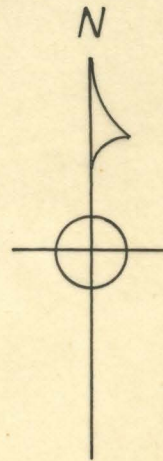
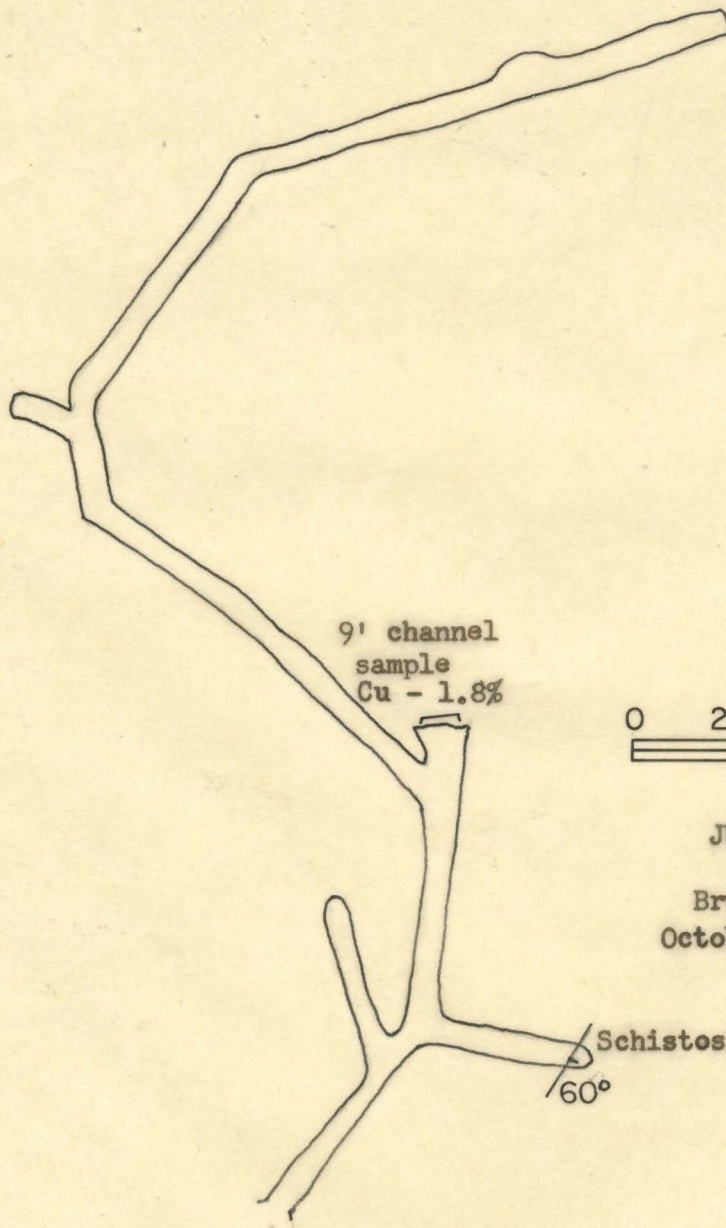
Schistosity N. 25° E.
dips 60° S.E.



ROWLEY MINE
PYRITE ADITS

Brunton & pace traverse Oct. 8, 1943 F.W.L. & R.C.T.

Scale 1 inch = 20 ft.

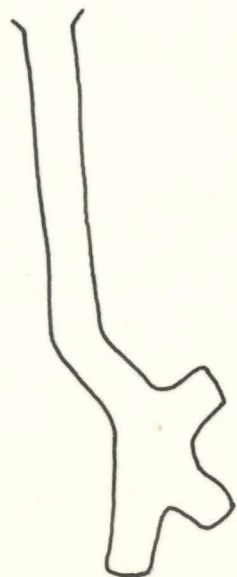
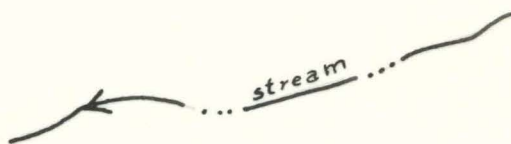
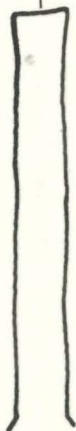


JUMPING JACK #6 CLAIM

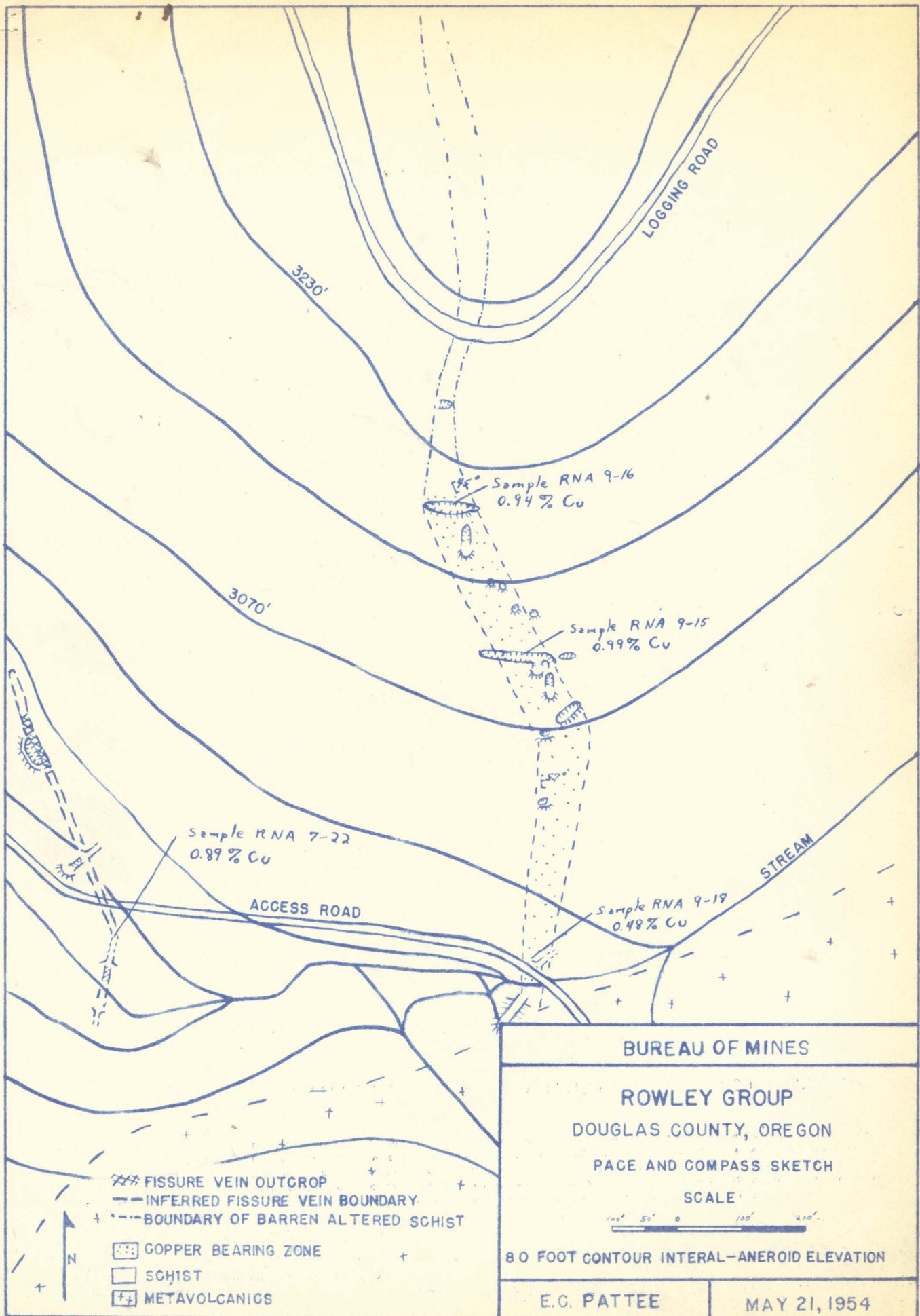
Brunton and Pace Traverse
October 8, 1943 - RCT and FWL

LE 18-15.2

5' sample of sulphides
Au ... 0.01 oz
Ag ... 1.03 oz
Cu ... 1.1 %
Zn ... 7.3 %



ROWLEY MINE
PYRITE ADITS (+50' or 550' ?)
downstream from main tunnel
Brunton & pace traverse - Oct. 1943
RCT & FWL
Scale: 20' = 1"



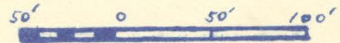
ROWLEY GROUP

ASSAY MAP

Chip samples taken 6/3/54

Assays in % copper

Scale

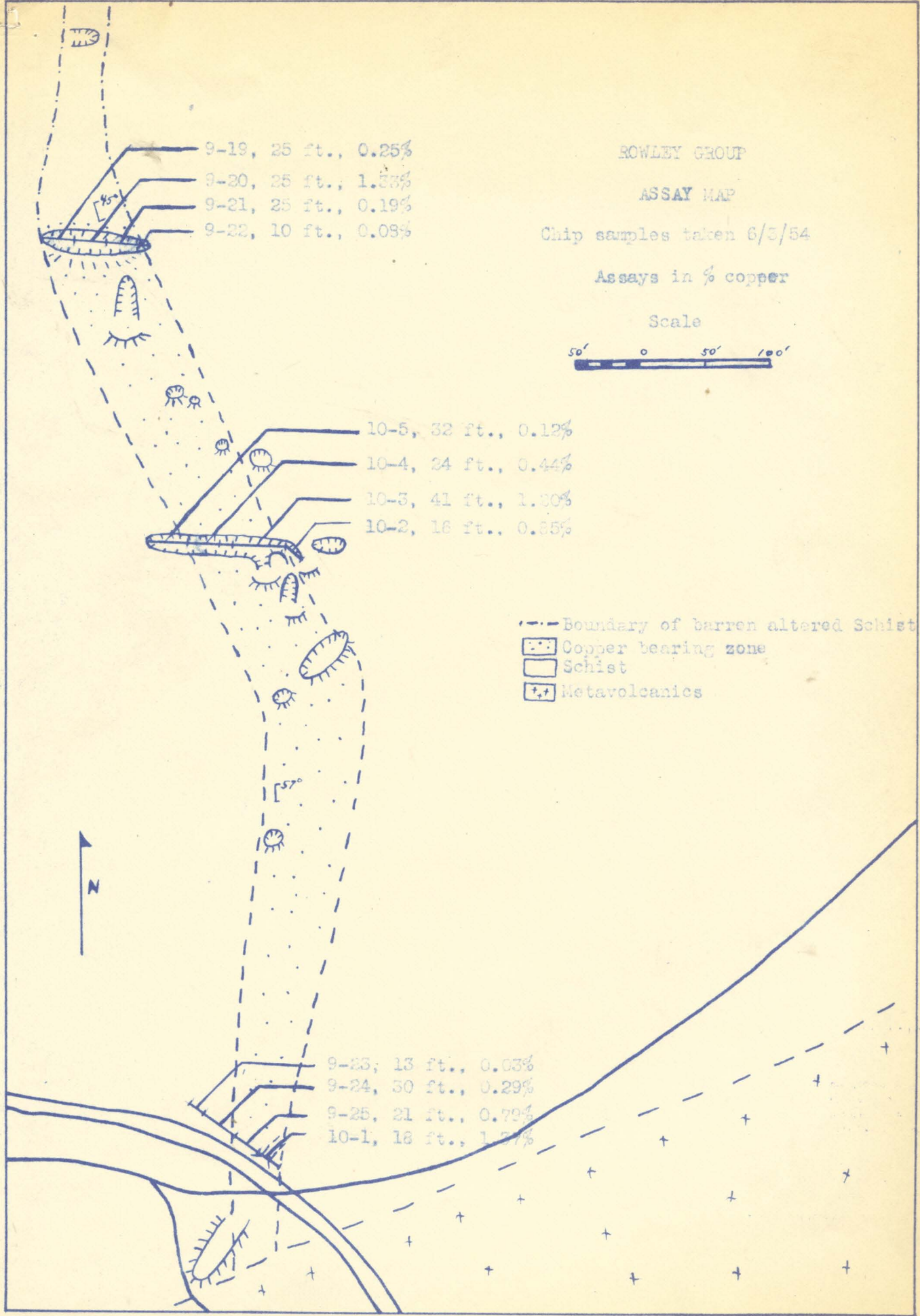


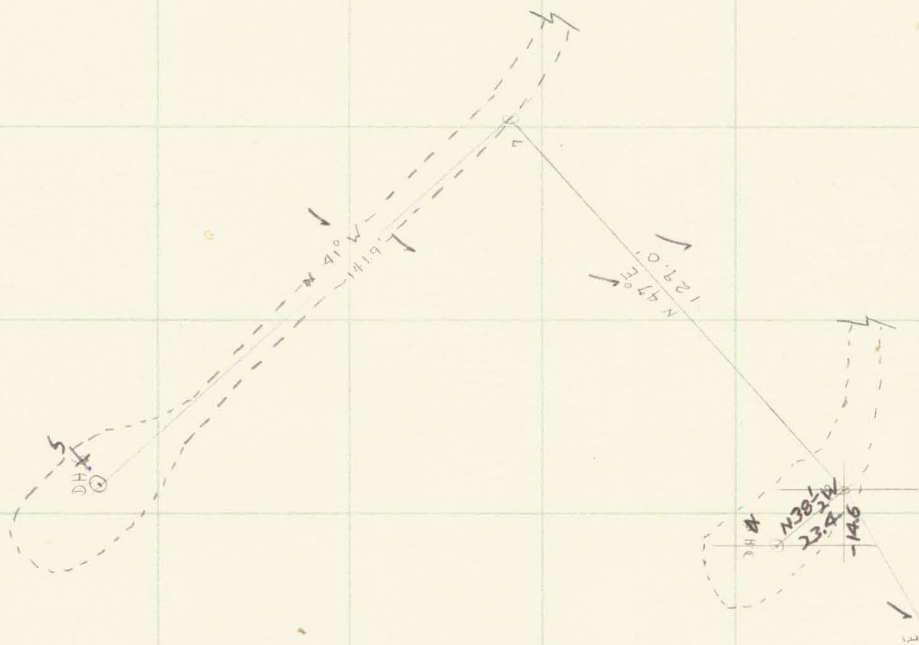
9-19, 25 ft., 0.25%
9-20, 25 ft., 1.33%
9-21, 25 ft., 0.19%
9-22, 10 ft., 0.08%

10-5, 32 ft., 0.12%
10-4, 24 ft., 0.44%
10-3, 41 ft., 1.00%
10-2, 16 ft., 0.85%

9-23, 13 ft., 0.03%
9-24, 30 ft., 0.29%
9-25, 21 ft., 0.79%
10-1, 18 ft., 1.57%

- - - Boundary of barren altered Schist
- ☐ Copper bearing zone
- ☐ Schist
- ☐ Metavolcanics

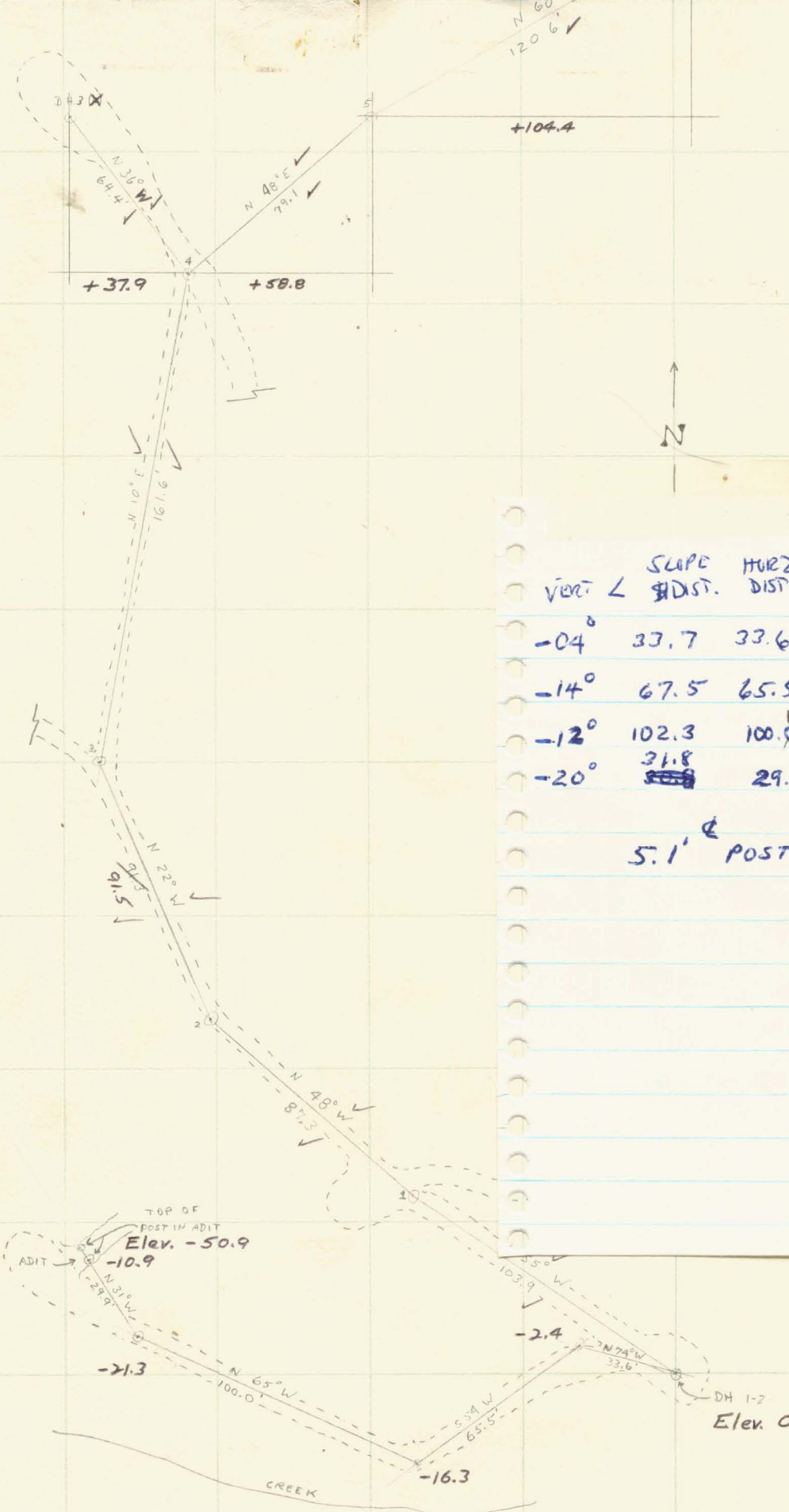




MINE _____ LOCATION _____ LEVEL _____

GEOLOGY BY _____ SURVEY _____ DATE _____ SCALE _____

N _____ E _____ EL. _____



VERT \angle	SCOPE DIST.	HORIZ DIST	BRG
-04°	33.7	33.6	N 74° W
-14°	67.5	65.5	S 54° W
-12°	102.3	100.0	S 65° W
-20°	31.8	29.9	N 31° W

5.1' \angle POST TO \angle POST

MINE ROWLEY LOCATION OR LEVEL
 GEOLOGY BY JWW SURVEY DATE 10/27/83 SCALE 1" = 50'

S70°W

DDH-4
+188.8

DDH-3
+83.6

STANDARD METALS CORPORATION

Rowley Project
Douglas County, Oregon

DRILL HOLE PLAN

Scale: 1 inch = 50 feet

Survey by Brunton and tape

Elevation datum is DDH's 1, 2

Adit

DDH's 1, 2
Elev. 0



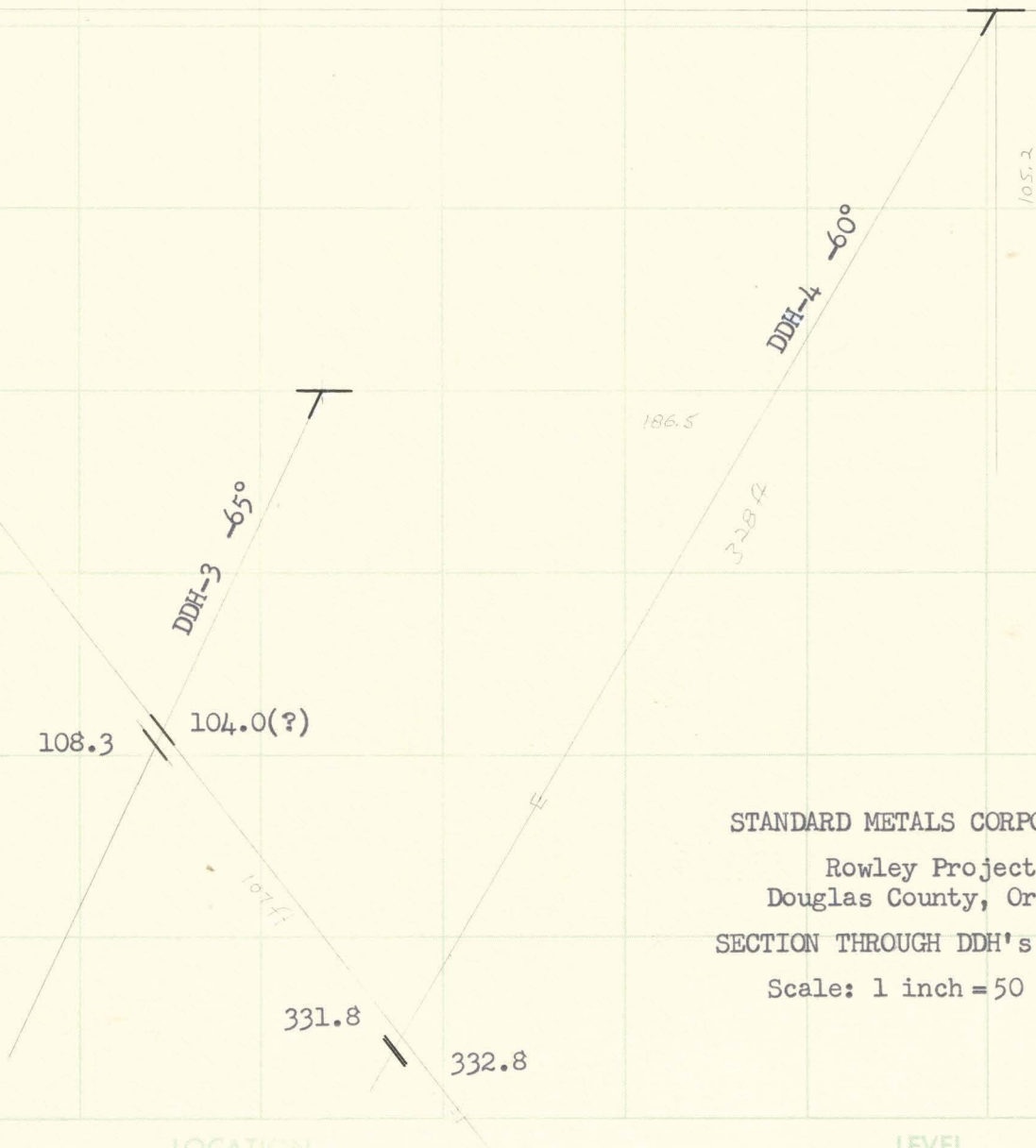
S 70° W

N 70° E

DDH-4 is approximately
11 feet behind plane of section

S 70° W

N 70° E



STANDARD METALS CORPORATION
 Rowley Project
 Douglas County, Oregon
 SECTION THROUGH DDH's 3 AND 4
 Scale: 1 inch = 50 feet

MINE _____ LOCATION _____ LEVEL _____
 GEOLOGY BY _____ SURVEY _____ DATE _____ SCALE _____
 N _____ E _____ EL. _____

S 70° W

N 70° E

52° apparent dip

DDH-1 50°

DDH-2 70°

205.0

198.6

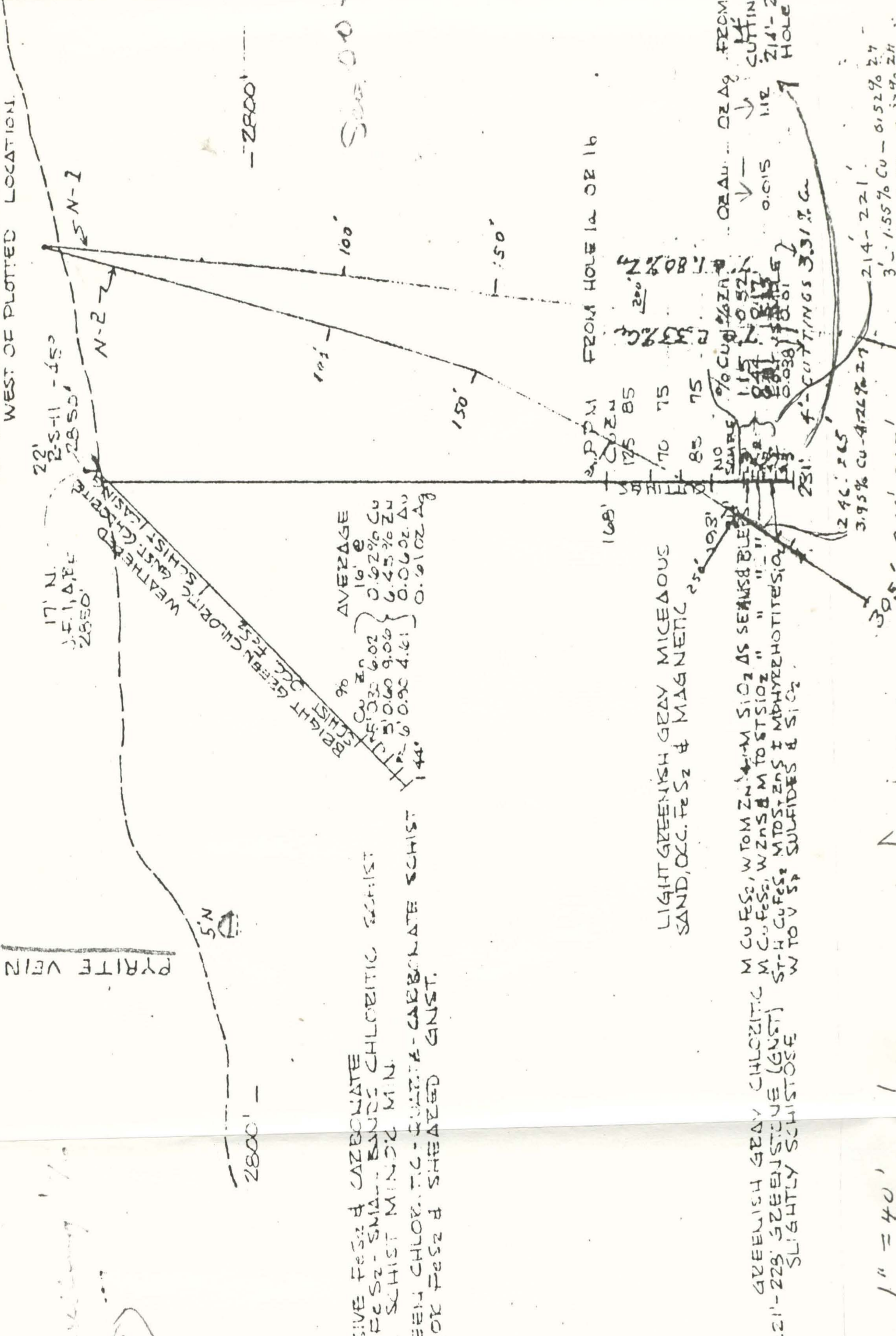
235.6

228.8

STANDARD METALS CORPORATION
 Rowley Project
 Douglas County, Oregon
 SECTION THROUGH DDH'S 1 AND 2
 Scale: 1 inch = 50 feet

MINE _____ LEVEL _____
 GEOLOGY BY _____ SURVEY _____ DATE _____ SCALE _____
 No 1101 EL. _____
 J. L. DARLING CORP.
 TACOMA, WASH., U.S.A.

NOTE: R-S-II MAY BE 20' TO 30' WEST OF PLOTTED LOCATION.



AVERAGE

16.8	
0.62%	Cu
6.45%	Zn
0.0602%	Ag

FROM HOLE 1a OR 1b

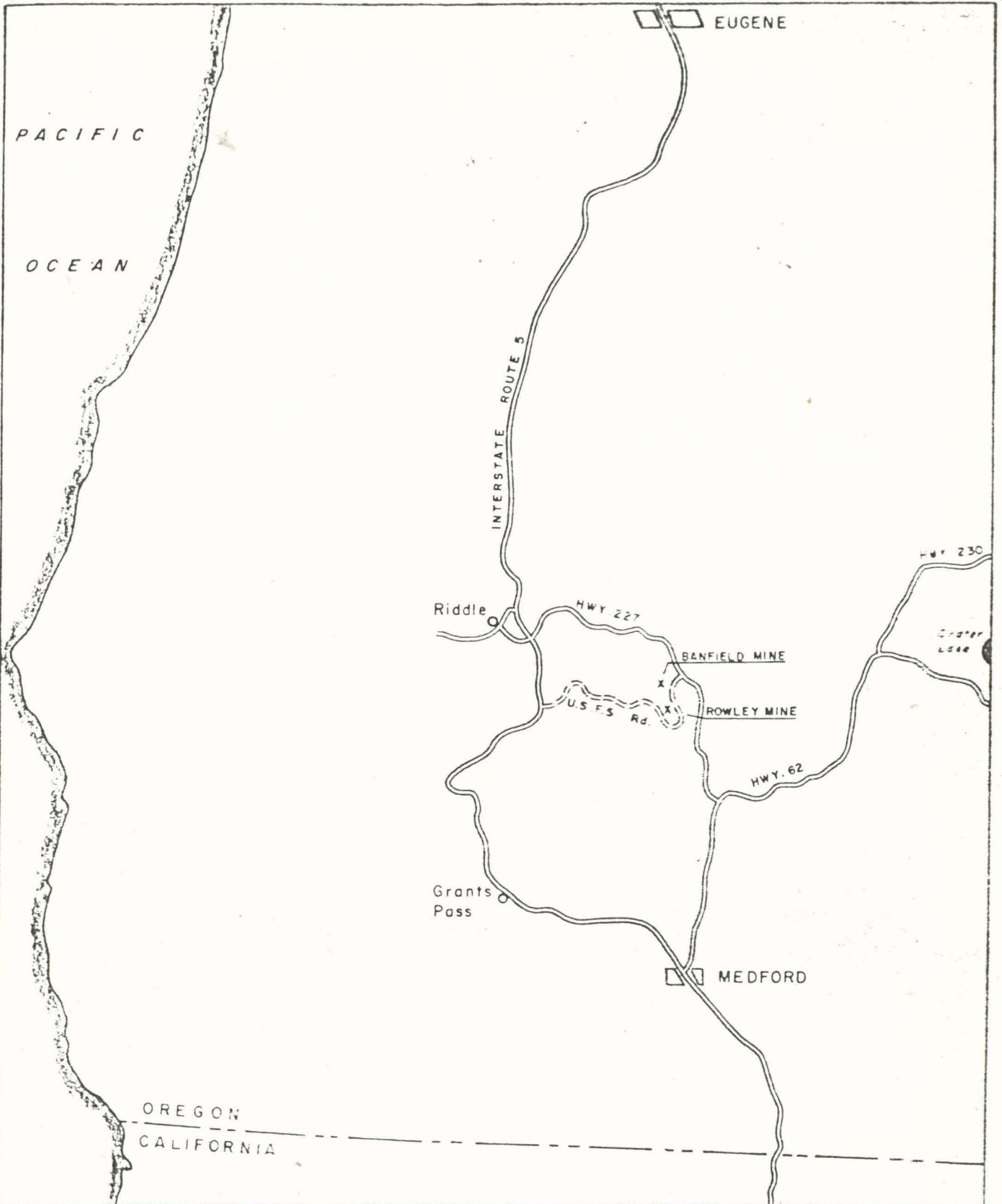
NO	% Cu	% Zn	% Ag
175	1.15	0.52%	
70	0.44	0.11%	
75	0.81	0.18%	
85	0.38	0.01%	
231	4.33%	1.80%	0.015
246	3.95%	1.55%	0.179%

MASSIVE FeS₂ & CARBONATE
 CuFeS₂ - SMA - BANGS CHLORITIC SCHIST
 TE SCHIST MINOR MIN.
 BRIGHT CHLORITIC - QUARTZ - CARBONATE SCHIST
 INK FeS₂ & SHEARED GNST.

LIGHT GREENISH GRAY MICACEOUS
 SAND, OCC. FeS₂ & MAGNETIC

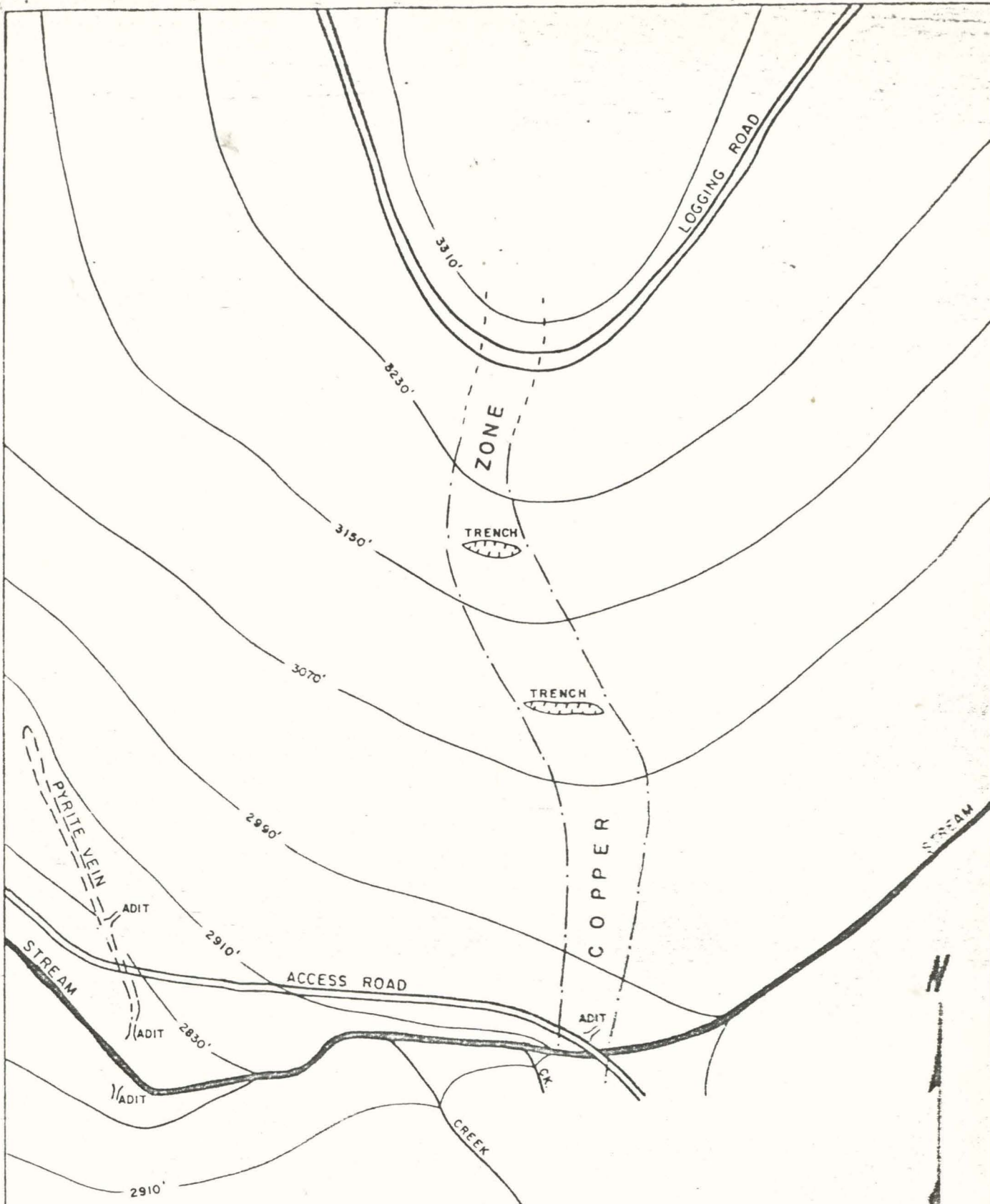
GREENISH GRAY CHLORITIC
 M CuFeS₂, W TO M Zn, M SiO₂ AS SEMI-SUB
 M CuFeS₂, W ZNS & M TO ST SiO₂
 ST-H CuFeS₂ M TO STENS I MPHYRHOITES
 W TO V S₂ SULFIDES & SiO₂

1" = 40'



WISCONSIN MINING COMPANY LIMITED
 Key Map of S.W. Oregon, showing location of
 Banfield and Rowley Properties

Scale - 1" = 15 Miles (Approx)



WISCONSIN MINING COMPANY LIMITED
 ROWLEY PROPERTY
 SKETCH MAP OF MAIN COPPER ZONE

SCALE: 1" = 200'