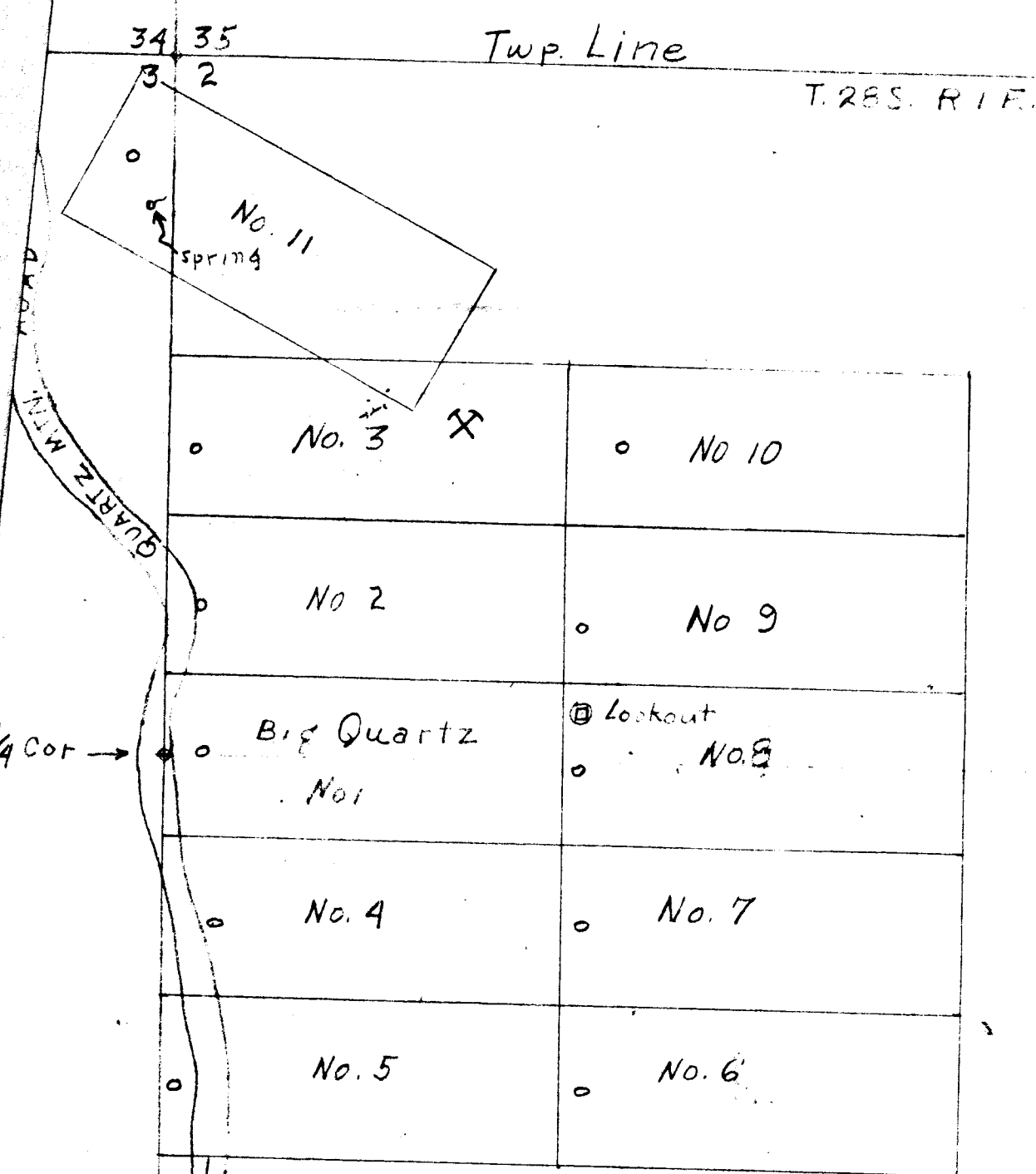


BIG QUARTZ MINE

Sketch of Claims



○ Discovery cuts
X Quarry sight (proposed)

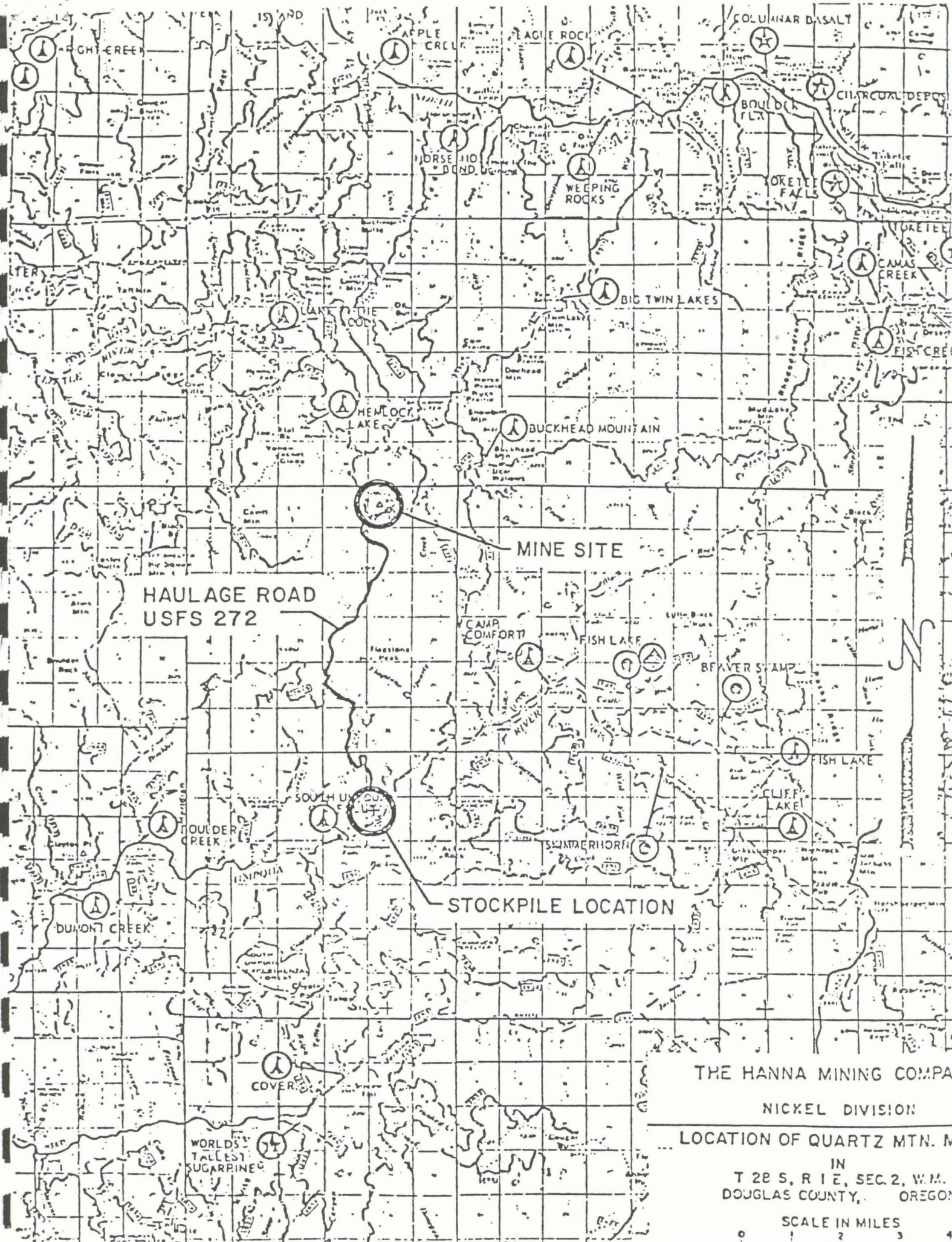
Located 8/13/57
Recorded 10/23/57

Ray Rainells & G D Rainells

QUARTZ MINE

1/4 Cor →

35 mi to Tiller ↓



HAULAGE ROAD
USFS 272

MINE SITE

STOCKPILE LOCATION

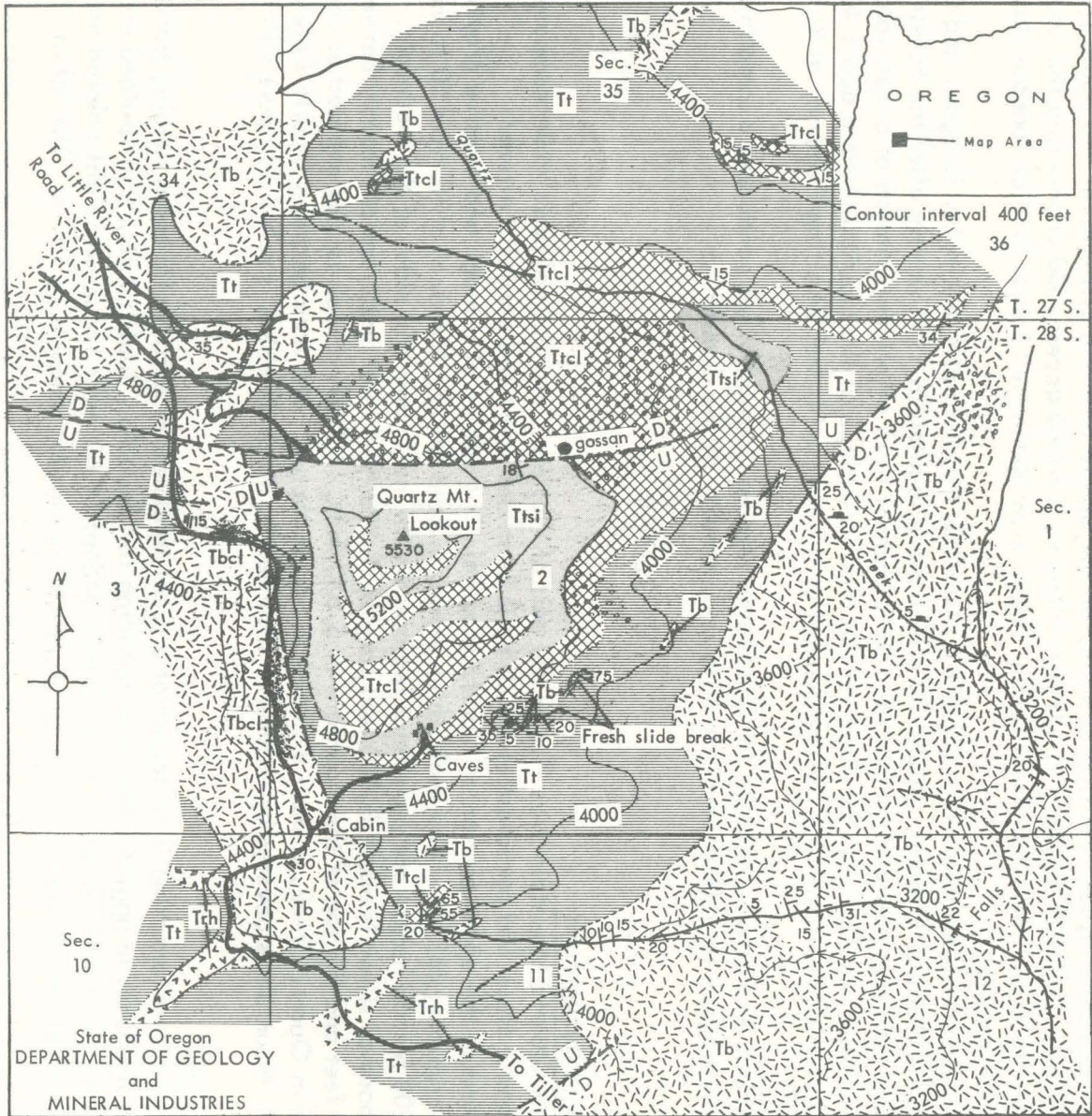
THE HANNA MINING COMPANY
NICKEL DIVISION
LOCATION OF QUARTZ MTN. M.
IN
T 28 S, R 12 E, SEC. 2, W.M.
DOUGLAS COUNTY, OREGON

SCALE IN MILES



R. 1 E.

GEOLOGIC MAP OF QUARTZ MOUNTAIN, DOUGLAS COUNTY, OREGON



State of Oregon
DEPARTMENT OF GEOLOGY
and
MINERAL INDUSTRIES

EXPLANATION

Upper Miocene (?)		Basalt flows and dikes, including some agglomerate and andesite	Silicification and alteration- post Miocene (?)
		Basalt altered to clay	
unconformity			
Oligocene-Miocene		Partly silicified tuff in large part altered to clay; cavernous weathering	Silicification and alteration- post Miocene (?)
		Silica rock and silicified tuff, in part with cavernous weathering	
		Tuff series including fine to coarse sediments, tuff breccia, lapilli tuff, fine-grained crystal tuff, and minor welded tuff, Tt; and rhyolite intrusives, Trh	

	Vertical joint
	Joint showing dip
	Parallel joints
	Attitude of bedding or platy flow planes
	Small fault showing dip
	Fault dashed where approximate, showing displacement; question mark where fault probable but uncertain
	Landslide debris
	Contact; dashed where approximate, dotted where inferred

Scale 0 1/4 1/2 1 Miles