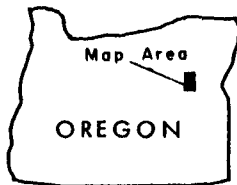


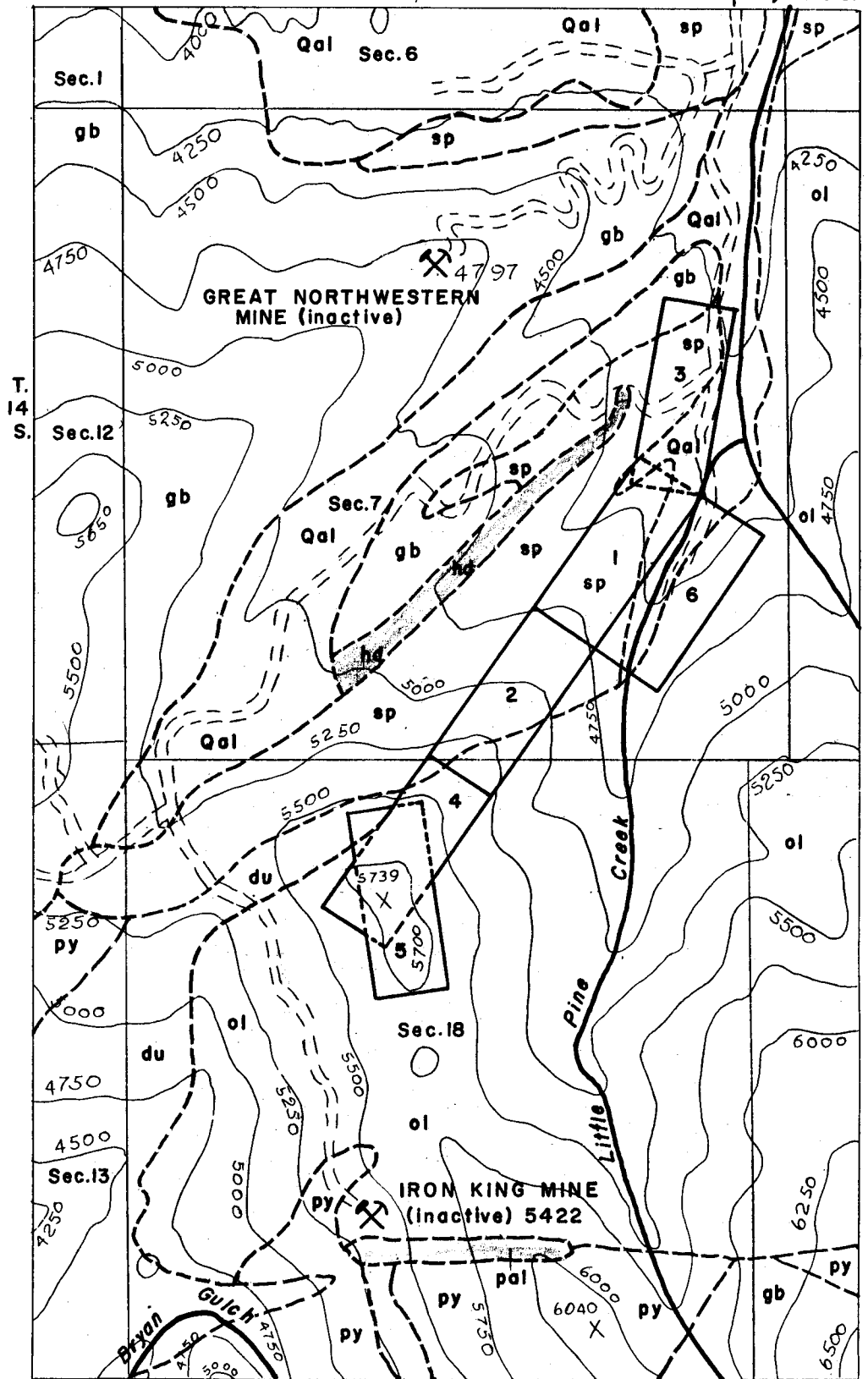
EXPLANATION

- Qal Alluvium
- hd Hornblende porphyry dike
- sp Serpentine
- gb Gabbro
- py Pyroxenite and peridotite
- ol Olivine-rich peridotite
- du Dunite
- pal Metamorphosed sediments and volcanics



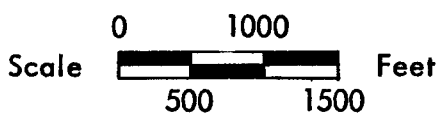
R. 31 E.

R. 32 E. 2 1/2 miles to John Day & U.S.395



SPARE TIME CLAIMS (Chrysotile asbestos)
Grant county, Oregon

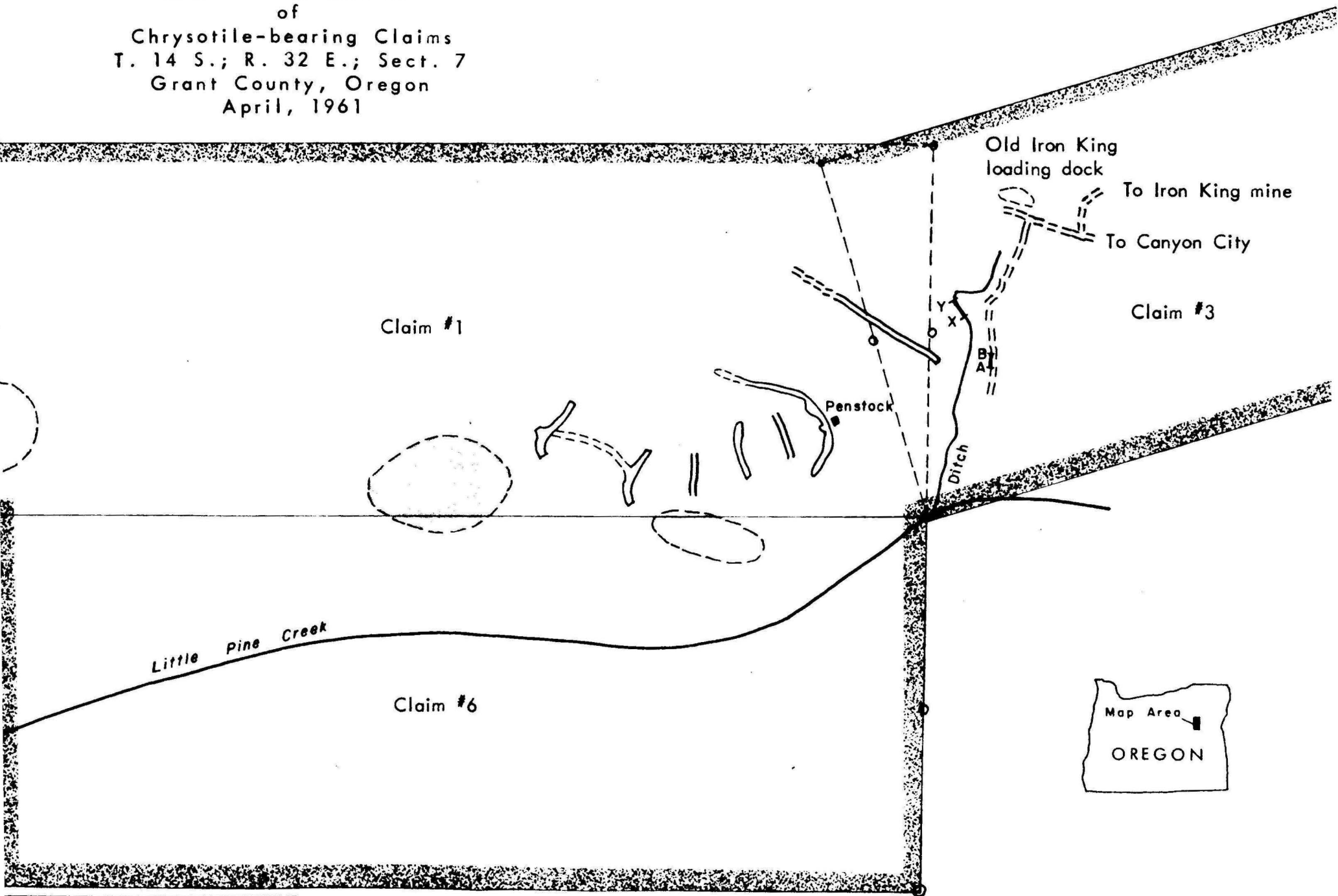
Plate I



Geology after Thayer, USGS
Mineral Investigations Field
Studies Map MF 51

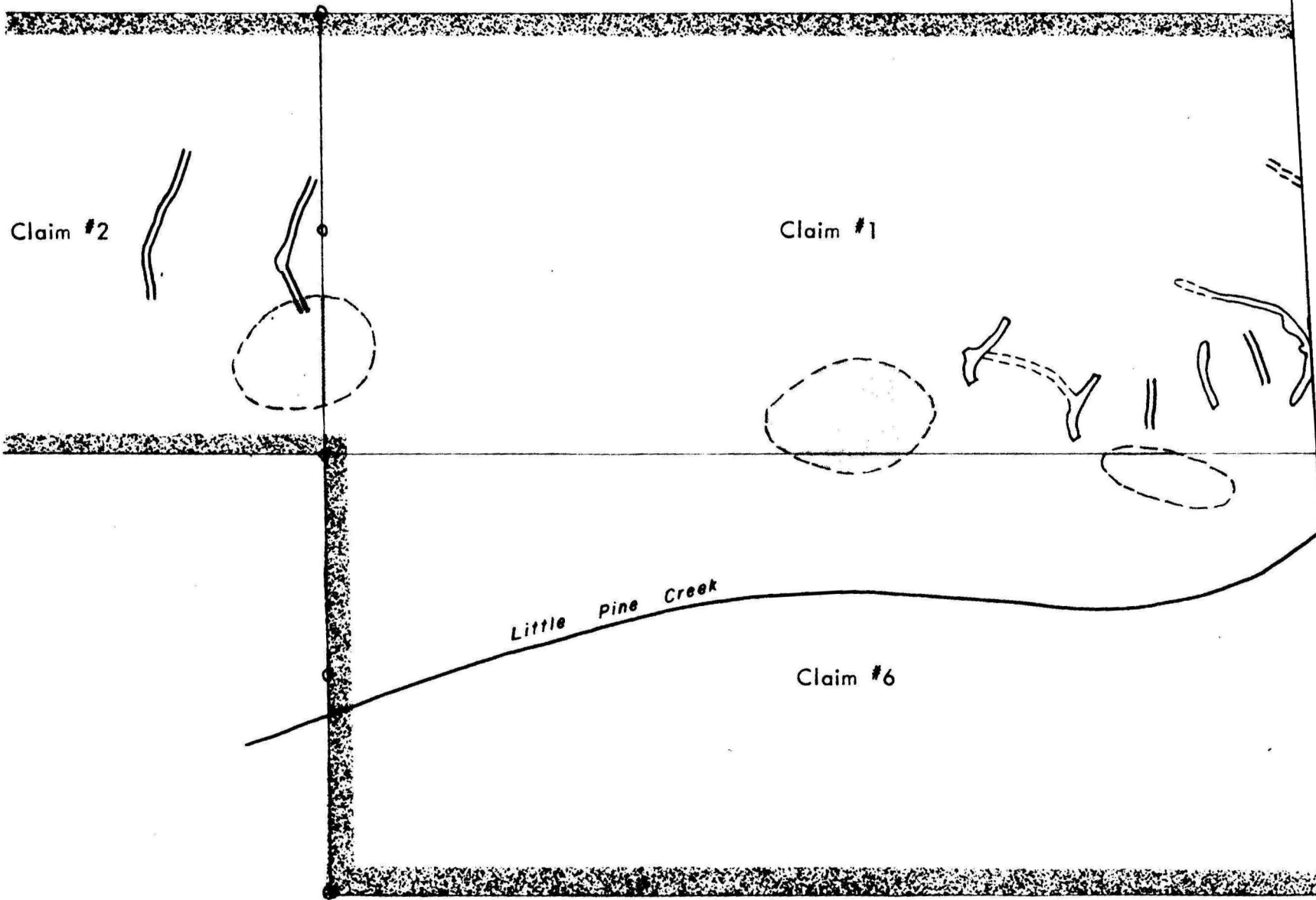
Topography after
US Topographic Survey
John Day 15' Quadrangle

Portion of
 SPARE TIME GROUP
 of
 Chrysotile-bearing Claims
 T. 14 S.; R. 32 E.; Sect. 7
 Grant County, Oregon
 April, 1961



INFORMATION
 trench locations
 (runton & Tape)

Chrysotile-bearing Claims
T. 14 S.; R. 32 E.; Sect. 7
Grant County, Oregon
April, 1961



EXPLANATION



Dozer trench locations
(by Brunton & Tape)



Natural bedrock exposures
(approximate locations)

