

FIG. 1

PROPERTY LOCATION

Twp. 8S., R. 35½E.

OREGON



NW¼ sec. 14
SW¼ sec. 14
NE¼ sec. 15

SE¼ sec. 14

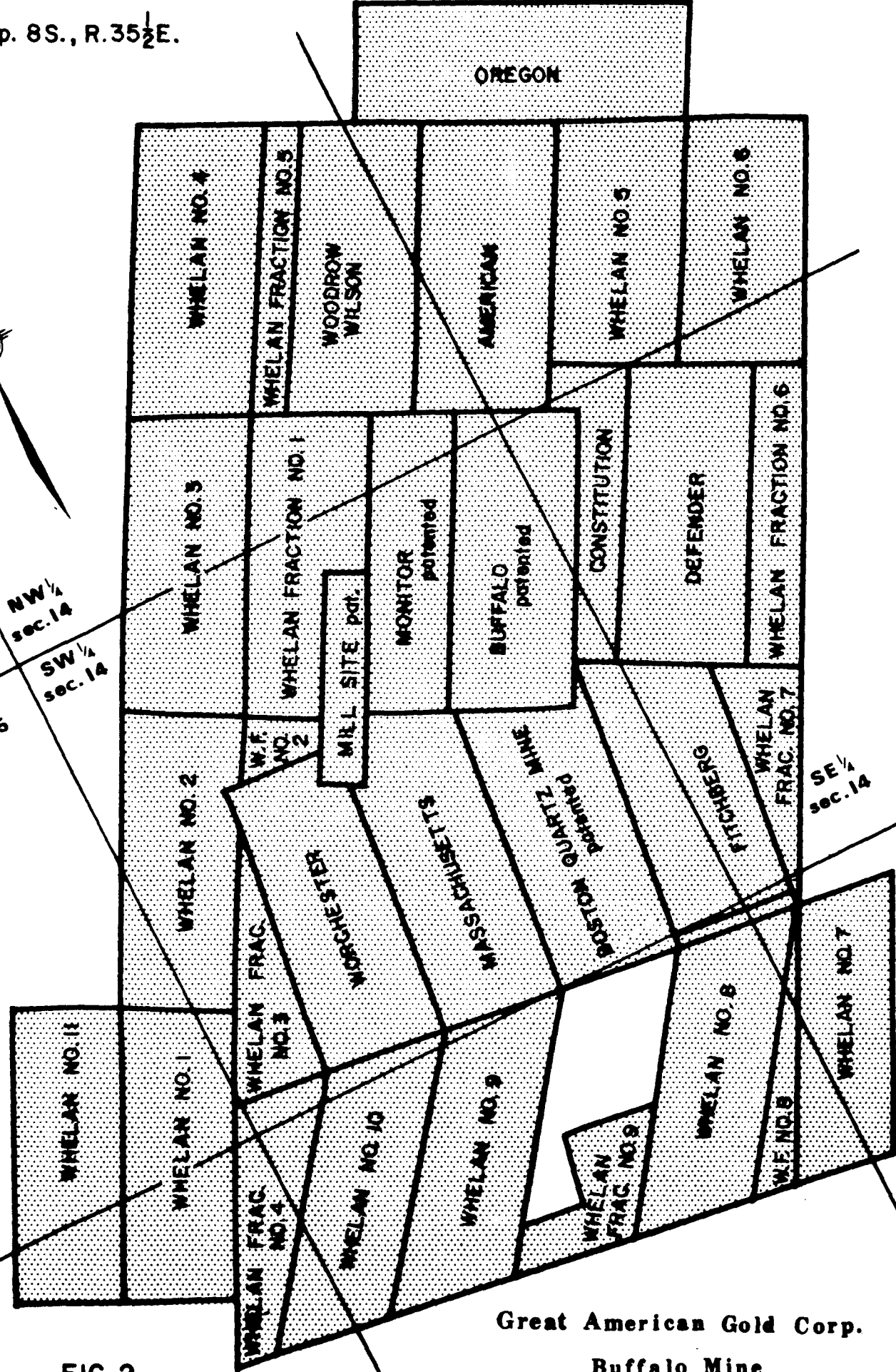
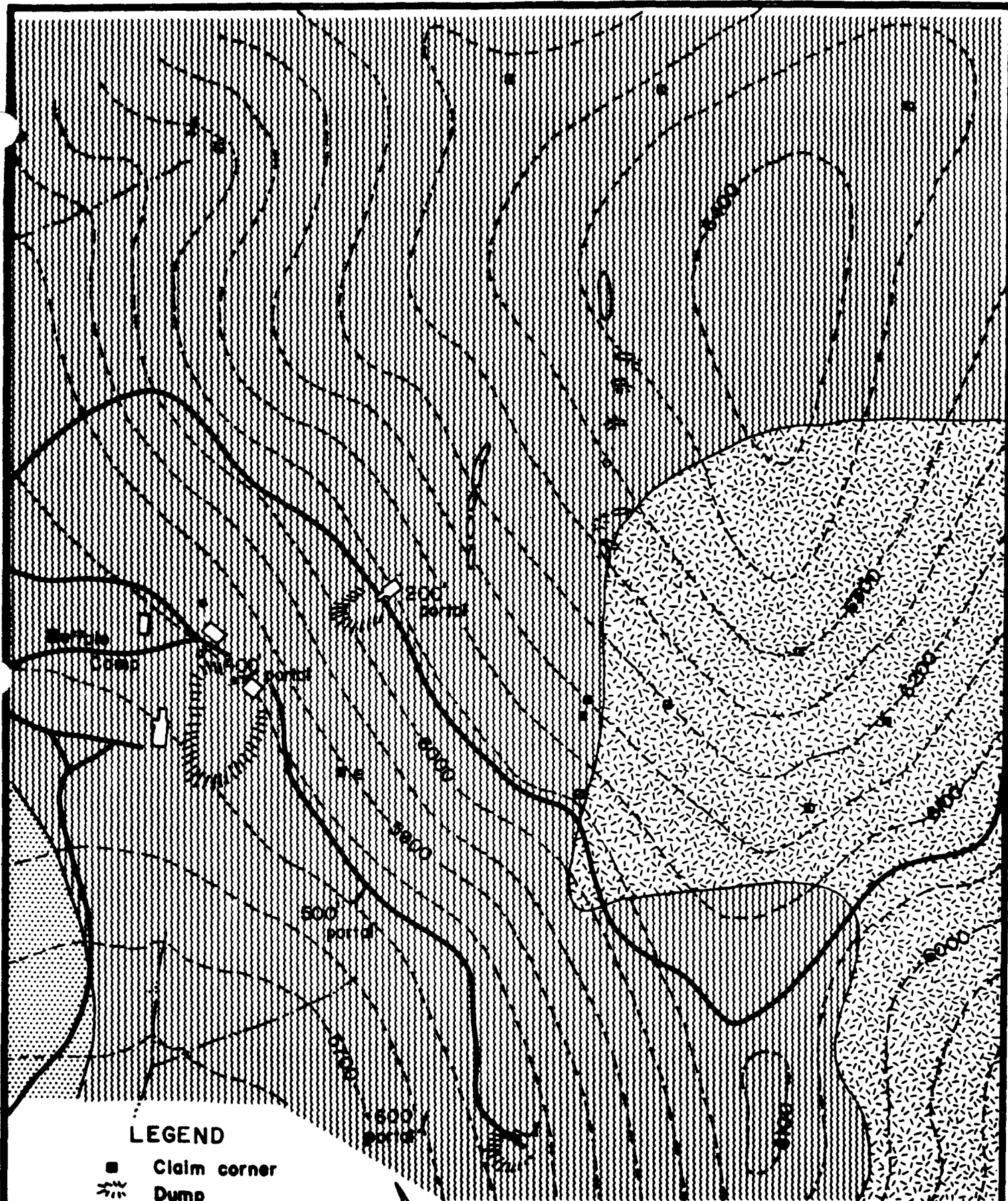


FIG. 2

Great American Gold Corp.
Buffalo Mine
CLAIM MAP

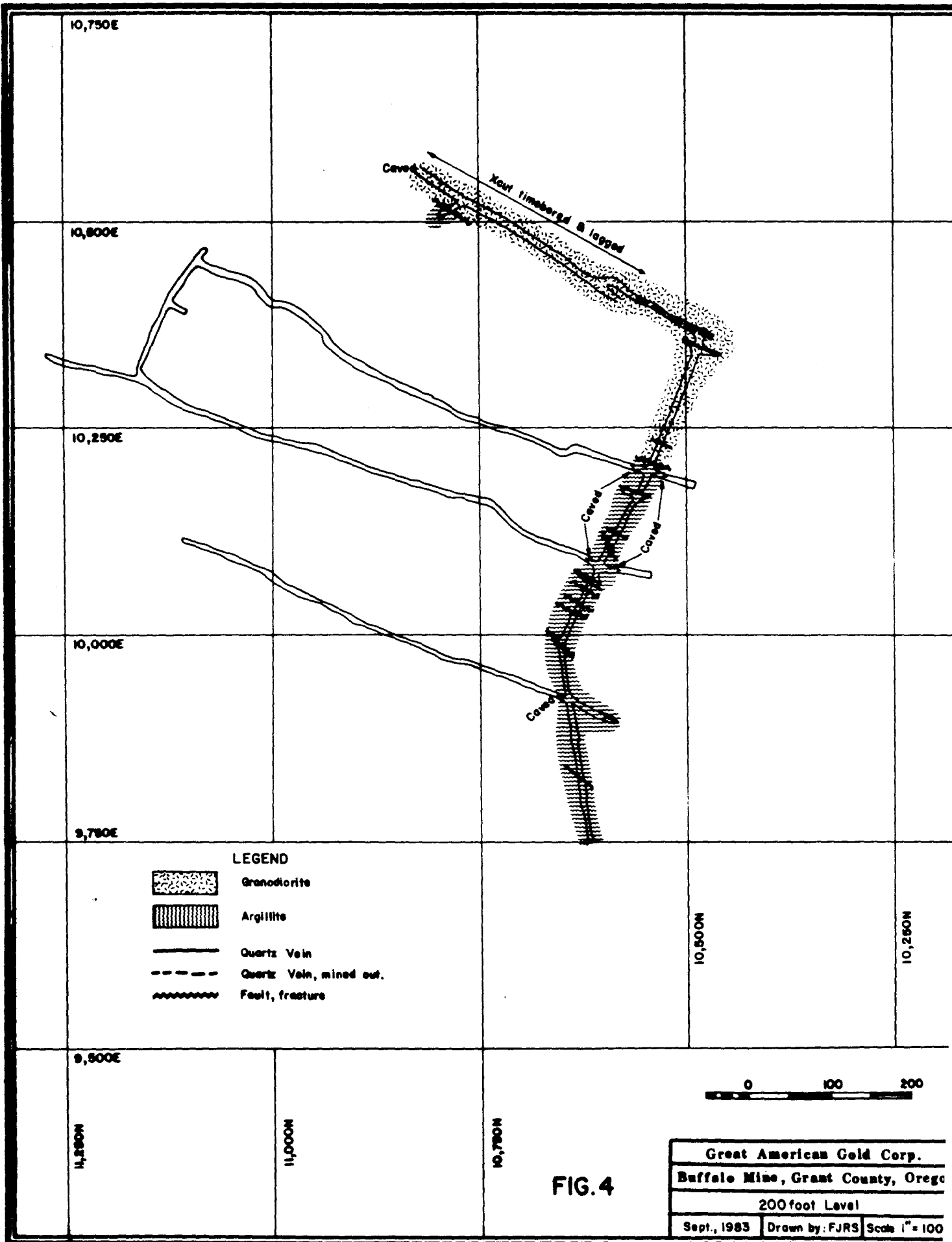




LEGEND

- Claim corner
- ☼ Dump
- Trench
- [Stippled Box] Tertiary Volcanics
- [Cross-hatched Box] Cretaceous Granodiorite
- [Vertical Lines Box] Permian Argillite

Great American Gold Corp.		
Buffalo Mine, Grant County, Oregon		
SURFACE GEOLOGY		
Sept., 1983	Drawn by: FJRS	Scale 1" = 300'



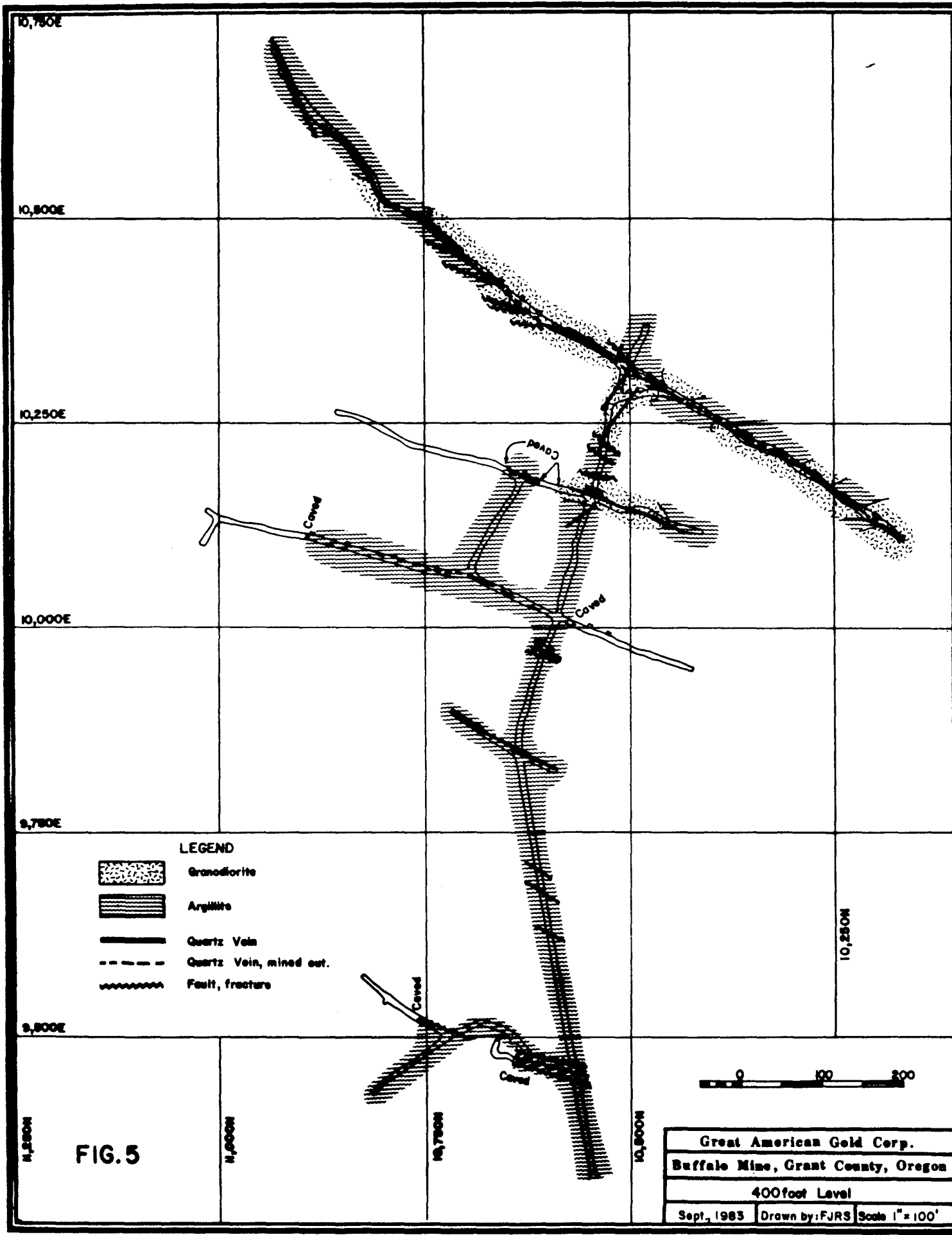







FIG. 5

- LEGEND**
-  Grandiorite
 -  Argillite
 -  Quartz Vein
 -  Quartz Vein, mined out.
 -  Fault, fracture

Great American Gold Corp.	
Buffalo Mine, Grant County, Oregon	
400foot Level	
Sept., 1983	Drawn by: FJRS Scale 1" = 100'

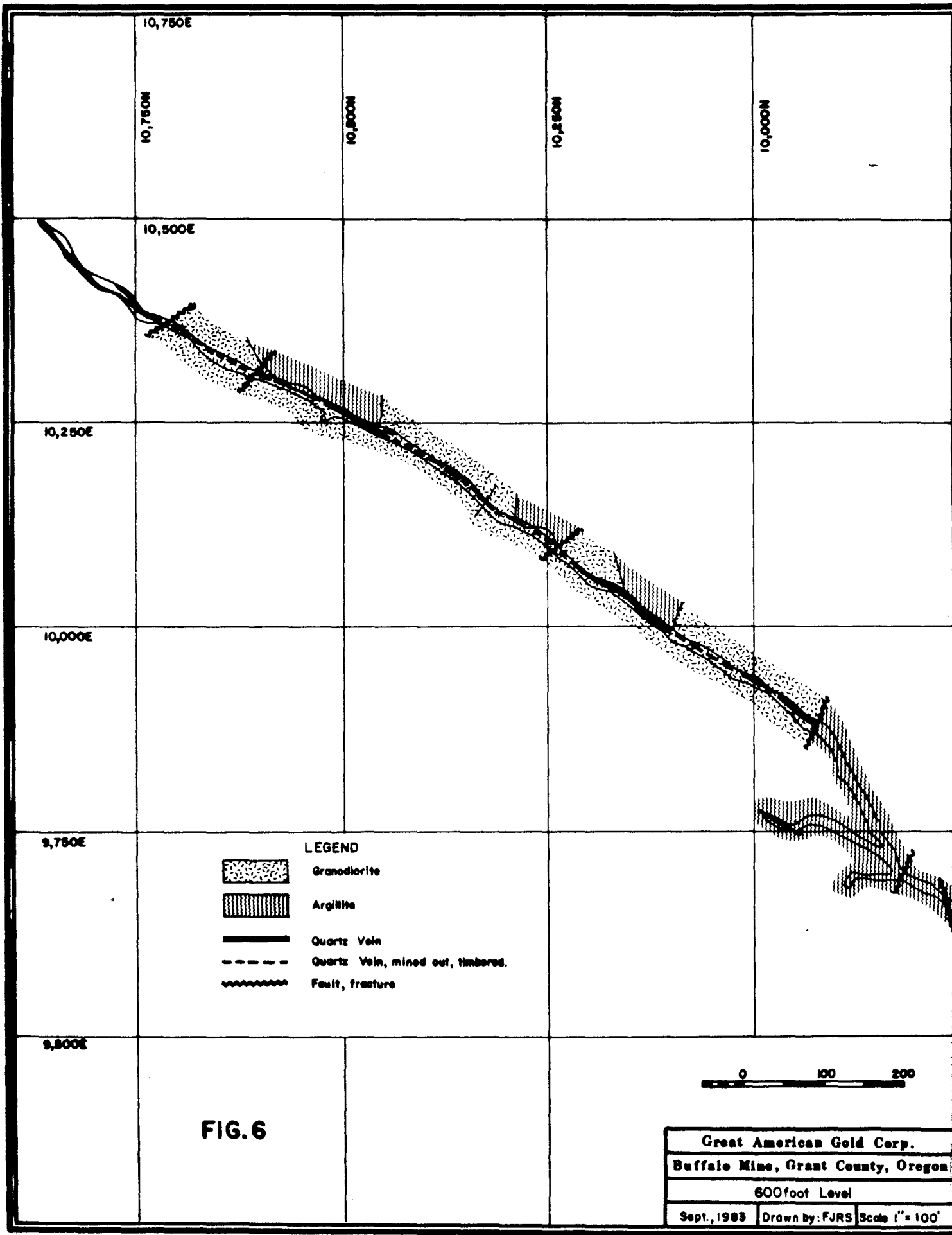


FIG. 6

Great American Gold Corp.		
Buffalo Mine, Grant County, Oregon		
600foot Level		
Sept, 1983	Drawn by: FJRS	Scale 1" = 100'