

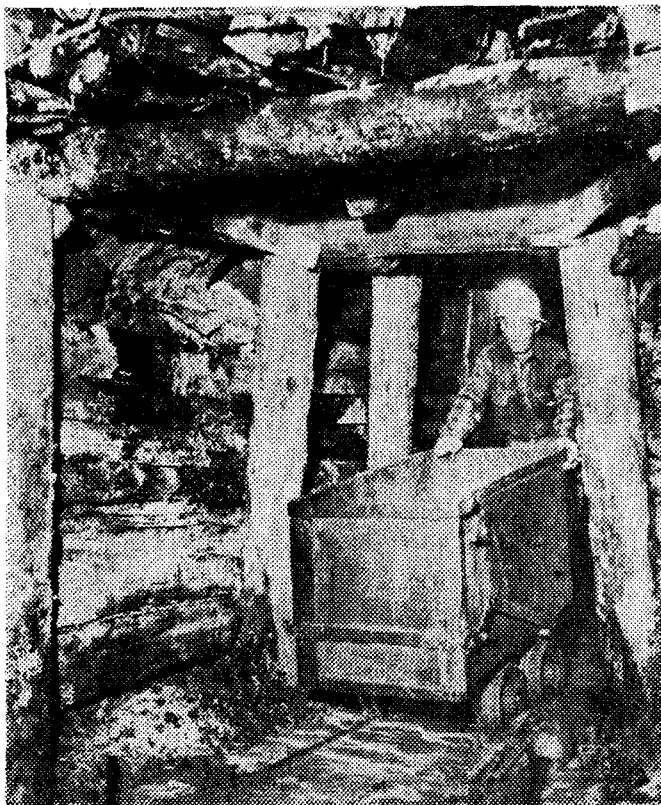
Gold In Oregon Mine, Couple Keeps Digging Away

ere gold at \$35 a
 ll commands only
 a prices. They ex-
 thusiastic for gold
 eing something of

g
 ing is a virus,
 it in your system
 et it out," Jack-
 t week while at
 Pacific Northwest
 Minerals confer-
 Sheraton-Portland

ing is a depressed
 the United States.
 sons learned while
 e conference that
 to stay that way.
 return to the gold
 d a boost in the
 l win little support
 from those direct-
 onal monetary pol-

get any more for



James P. Jackson, who with his wife, is the operator of one of Oregon's more successful gold mines, is shown several years ago when the mine was actually turning out the precious metal. In the past year development work has been done. Gold is expected to flow shortly.

our gold than we did in 1933," Jackson moaned as he talked to geologists at the conference.

But Mr. and Mrs. Jackson (she is probably the best looking gold mine operator in Oregon) live on pure optimism.

They don't expect the price to change in the near future, nor are they interested in any government subsidy, such as supports 40 of Canada's 50 gold mines.

The Jacksons feel the federal government would be a lot happier if people just quit mining gold in the United States. But gold mining isn't something you can shut on and off, like the Midas touch. A gold mine that isn't kept in repair soon is no mine at all and often cannot ever be re-opened, particularly if the people who know how to mine gold have all disappeared into more lucrative professions.

The Jackson mine has a potential yearly production of

about \$300,000 to \$400,000, but last year it didn't turn a nickle.

The owners, along with the Jacksons who are partners, spent most of the year in developing a new lower shaft some 1000 feet into the mother lode. They hope to be mining gold from the new shaft by early summer.

The Jacksons are not easily

Trees Bought

VANCOUVER, Wash. (Special)—Stebco Lumber Co., with a high bid of \$129,110 was awarded 46 acres of timber in the Mt. Adams working circle of the Gifford Pinchot National Forest, according to S. A. Norton, acting forest supervisor.

Rees A. Stevenson Lumber Co., made the high bid of \$30,560 for 172 acres of timber in the Mt. Adams working circle Norton added.

discouraged. They live alone during the winter months—except when three to six miners are working the 'gold—about "two hours drive from the nearest Safeway," as a friend expressed it.

So wild and remote is the Buffalo mine, that not long ago Jackson shot not one, but three bears prowling his front porch.

But the gold mining Jacksons have one major hallmark of civilization, a television set that gets one channel in Boise, Idaho. They also have three cats and a "box of dogs," along with a player piano to keep them from getting lonesome.

Steaks at Meals

"We can do anything you city folks can do but attend a bar," Jackson declared.

Mrs. Jackson is the "straw boss" of the gold mine. She does the washing and the cooking, and keeps the bears

shooed out of the yard. Visitors insist she has reduced cooking to a basic simplicity—that is by serving nothing but top sirloin steaks.

Also, miners who eat with the Jacksons usually get a choice of wine, so as to settle their nerves after a hard day picking at rocks.

The Jacksons have operated the mine for ten years. They are partners in the venture with John Fox, Cyrus W. Ostrom, Leslie M. Rose and Arthur J. Theis, all of Seattle.

ADVERTISEMENT

Hè
 F/
 L
 No
 ease
 teet
 line
 you
 feel
 rass
 FAS

OPEN TONIGHT WITH A B M

Thar's Gold In Oregon Mine, Couple Keeps Dig

By HAROLD HUGHES
Staff Writer, The Oregonian

The business of mining gold in these pegged-price times is about as glum as an abandoned mine shaft, but Oregon's two leading gold mine operators are still wearing a 24-carat badge of optimism.

Mr. and Mrs. James P. Jackson operate the Buffalo Mine in Grant County. They turn out about 80 per cent of Oregon's gold production—in years when Oregon has any gold production.

The Buffalo mine is an ancient digging, dating back into the 1880's. It has logged during its durable lifetime about one million dollars worth of gold, and a lot more than that went unreported.

The Jacksons are optimists

18

THE OREGONIAN
Friday, May 6, 1960

in a land where gold at \$35 a fine ounce still commands only depression era prices. They explain their enthusiasm for gold mining as being something of a disease.

Keep Digging

"Gold mining is a virus, once you get it in your system you can't get it out," Jackson said last week while attending the Pacific Northwest Metals and Minerals conference at the Sheraton-Portland Hotel.

Gold mining is a depressed industry in the United States. And the Jacksons learned while attending the conference that it is likely to stay that way. Pleas for a return to the gold standard and a boost in the price of gold win little support these days from those directing international monetary policy.

"We don't get any more for



James P. Jackson, who with his wife, is the operator of one of Oregon's more successful gold mines, is shown several years ago when the mine was actually turning out the precious metal. In the past year development work has been done. Gold is expected to flow shortly.

our gold than we did in 1933," Jackson moaned as he talked to geologists at the conference.

But Mr. and Mrs. Jackson (she is probably the best looking gold mine operator in Oregon) live on pure optimism.

They don't expect the price to change in the near future, nor are they interested in any government subsidy, such as supports 40 of Canada's 50 gold mines.

The Jacksons feel the federal government would be a lot happier if people just quit mining gold in the United States. But gold mining isn't something you can shut on and off, like the Midas touch. A gold mine that isn't kept in repair soon is no mine at all and often cannot ever be re-opened, particularly if the people who know how to mine gold have all disappeared into more lucrative professions.

The Jackson mine has a potential yearly production of

about \$300,000 to \$400,000, but last year it didn't turn a nickle.

The owners, along with the Jacksons who are partners, spent most of the year in developing a new lower shaft some 1000 feet into the mother lode. They hope to be mining gold from the new shaft by early summer.

The Jacksons are not easily

Trees Bought

VANCOUVER, Wash. (Special)—Stebco Lumber Co., with a high bid of \$129,110 was awarded 46 acres of timber in the Mt. Adams working circle of the Gifford Pinchot National Forest, according to S. A. Norton, acting forest supervisor.

Rees A. Stevenson Lumber Co., made the high bid of \$30,560 for 172 acres of timber in the Mt. Adams working circle Norton added.

OPEN TONIGHT

Mining & Industrial News

OFFICIAL PUBLICATION

Of the GOLD MINING ASSOCIATION OF AMERICA — MINING ASSOCIATION OF CALIFORNIA
CALIFORNIA HYDRAULIC MINING ASSOCIATION

Volume 10—No. 11

November 15, 1942

\$1.50 Per Year—15c Per Copy

Nelson Orders Resurvey Of Manpower In Gold Mining

A resurvey of the manpower situation in the gold mining industry is being conducted by Donald Nelson, WPB chairman, at the request of gold mining operators, whose mines were shut down on October 15 by WPB order. During a series of hearings held with WPB, the Manpower Commission and the Army in Washington, gold mine operators presented data showing that not more than 750 miners and muckers would be made available to copper mines, and that the shutdown is creating wide unemployment and economic ruin in gold mining districts.



Harry Englebright

Representative Harry Englebright of Grass Valley, Calif., led the fight against the order in company with Errol MacBoyle of Grass Valley, chairman of the California State Mining Board and executive vice president of Idaho Maryland Mines Corp., and by Merrill E. Shoup of Colorado Springs, Colo., who is president of the Colorado Mining Association and president of Golden Cycle Corporation of Colorado Springs.



Errol MacBoyle

Following the conferences, Representative Englebright received the following letter from Dr. Nelson: "I would like to have for each gold mine," Nelson wrote, "detailed information as to the minimum number of men they would require, by ages, by skills, to operate their

mine on the scale which would permit them to get out just enough ore to pay standby operating expenses. I would like also to know the amounts of different materials which would be required by each mine to operate. This could be on a monthly or quarterly basis."

This information is now being forwarded to Mr. Englebright, and all gold operators who have not yet

days with those in authority on the subject in Canada, the information was received that the Canadian government has no intention of closing down its gold mine operations.

We respectfully urge that no beneficial result inuring to the defense of the United States in its time of war will flow from the or-

TABLE of CONTENTS

Anaconda Buys BMI	3
Humphreys in Chrome	3
Plumas Copper	3
Cupric Mines	4
Bradleys in Chrome	5
Dodge Developing Tin	5
Utah Mining	5
Editorial	7
Old Newton Re-opened	7
Washington Mining	7
War Production Board	8
Nevada Mining	9
Manufacturers	9
New Mining Incorporations	10

HARRISON MINE TAKEN BY SCOTT

Operations are starting about November 15 at Harrison quicksilver mine in Morgan Valley, Lake county, Calif., optioned recently by H. C. Scott of Oakland, Calif. Mining will be principally by shovel method. Property is already equipped with 60-ton Rotary furnace. Harrison mine is owned by Vincent and Vernon Harrison of Morgan Valley. Mine address is Middletown, Calif.

Copper-Zinc Mine Worked By Surcease

A copper-zinc property recently acquired in Butte county, Calif., by Hoefling Brothers of Sacramento,

Metal Miners Discuss War Problems At Salt Lake City

Stimulation of production of critical metals for the war effort and means of overcoming increasing labor shortages in the mines were thoroughly considered by metal mine operators in a two day conference sponsored by the Western Division, American Mining Congress at Salt Lake City, Utah, on Monday, November 16, and Tuesday, November 17.

Sessions of the conference were highlighted by addresses by Major General Lewis B. Hershey of the selective service system and Brigadier General Frank J. McSherry, operations director of the war manpower commission, on the all important topic of "Manpower for the Mines".



Julian D. Conover

The conference was opened by Mining Congress President Howard I. Young and the initial session was devoted to consideration of problems of metal production. Taking part in this session were a number of WPB officials including H. W. Dodge, assistant deputy-director general of industry operations; Wilbur A. Nelson, mining branch administrator; H. O. King,



Worthen Bradley

chief of the copper branch; W. C. Page, zinc branch; Erwin Vogelsang, lead branch; Miles K. Smith and Andrew Leith, ferro alloys branch, and Richard J. Lund, miscellaneous minerals branch.

At a luncheon session on Monday, Senator Pat McCarran of Nevada discussed outstanding problems of western mining.

The Monday afternoon session was devoted to consideration of strategic metal production, Bureau of Mines activities, and the scrap program. Speakers were ex-Senator Charles W. Henderson, chairman of RFC and president of Metals Reserve Company; Director R. B. Say-

lace and Jesse L. Maury, chief premium price assistant analyst for copper, lead and zinc of the OPA, discussed metal prices, quotas and premium payments.

In the afternoon also, mining equipment manufacturers met with WPB Mining Branch Administrator Wilbur A. Nelson and Mining Branch Machinery Division Chief

been approached, should send the foregoing facts about their property to Congressman Harry Englebright, House of Representatives, Washington, D. C., immediately.

Only 750 Men Available

Hearings developed the fact that the original order was largely based on a report by Samuel Lipkowitz of the labor bureau that 15,000 men could be made available for copper mining through a shutdown in gold mining.

Under cross examination Mr. Lipkowitz admitted that his figures were based on 1941 reports, but Mr. MacBoyle pointed out that whereas his mine had employed 1000 men in 1941, it now employed only 245. Mr. Lipkowitz finally agreed that about 2500 was correct, and gold mine operators then emphasized the fact that only miners and muckers could work in copper mines and there were not more than 750 of these available.

The Social Security Board has notified Congressman Englebright that up to October 22 only 90 mine workers had reported to the nearest office of the U. S. Employment Service and had been referred to other non-ferrous metal mines.

Senators Protest to President

Senators McCarran of Nevada and Murray of Montana were also active in the hearings, as well as a number of other senators. A letter on the situation was prepared and signed by twenty-four senators and sent to the president, asking that the order be modified. Among other things, the letter said:

England Mining Gold

We respectfully draw your attention to the fact that at this very time Great Britain is urging and aiding the production of more gold by the gold mining operators of South Africa.

We respectfully draw your attention to the fact that our neighbor ally in this war, the Dominion of Canada, is going forward and encouraging the production of gold in that country, and in a telephonic communication within the past few

Board closing the gold mines of this country. The record needs no emphasis that great and irreparable injury will result.

The following senators signed the letter to the President: Pat McCarran, Nevada; Carl Hayden, Arizona; Ernest W. McFarland, Arizona; Edwin C. Johnson, Colorado; Eugene D. Millikin, Colorado; Hiram W. Johnson, California; Sheridan Downey, California; Carl A. Hatch, New Mexico; Dennis Chavez, New Mexico; William Langer, North Dakota; Gerald P. Nye, North Dakota; Chan Gurney, South Dakota; William J. Bulow, South Dakota; John Thomas, Idaho; James E. Murray, Montana; Elbert D. Thomas, Utah; Abe Murdock, Utah; Charles L. McNary, Oregon; Rufus C. Holman, Oregon; Homer T. Bone, Washington; Mon C. Wallgren, Washington.

Grass Valley Miners Protest

Indication of the unemployment that will be caused by the order is contained in a petition filed with Donald Nelson, by 157 miners of Grass Valley, Calif. These miners stated that all of them are over 50 years of age and knew nothing of any other kind of work, consequently they could not be employed in copper mines or in shipyards.

Gold Mine Securities Depressed

The effect of the shutdown order on securities of leading gold mining companies is causing widespread comment. Stock of Homestake Mining Company dropped from \$35 to \$22 a share and immediately recovered in price, indicating "short" selling in the stock.

Violent fluctuations in gold security prices are coupled with rumors that international financial interests are buyers of gold mining stock, which has led to comments that certain financial interests are taking advantage of the shutdown order to acquire gold mines at bargain prices.

Disaster in Colorado

Merrill E. Shoup, president of The Cresson Consolidated Gold Mining and Milling Company of Colo-

(Continued on Page 4)

Calif., will be intensively developed with crew and facilities of Surcease gold mine near Oroville, Calif., operated by Hoefling Brothers until closing order applying to gold properties was issued. A 30 day extension of rock breaking deadline, to



J. W. Hoefling

November 15, has been granted to Surcease mine, the result of special appeal filed by the operators to permit pulling of pillars and ore ends in sections of mine never expected to be accessible again on re-opening, and to permit most effective shift of facilities in strategic mineral program —of Hoefling Brothers.

If development at new copper-zinc property is favorable, mill of nearby Surcease mine will be adapted for flotation concentration of the copper-zinc ores resulting. Ore will be transported from mine to mill by truck, a distance of only a few miles.

J. W. Hoefling, P. O. Box 786, Sacramento, is manager of Hoefling Brothers. Allan E. Jones, Box 991, Oroville, is superintendent of all operations of Hoefling Brothers, including Spud Patch Placer, a new tungsten project recently undertaken at Atolia, Calif.

BLUE MOON GOLD PRODUCING ZINC

Zinc production will start from Blue Moon gold mine near Hornitos, Mariposa county, Calif., as soon as installation of electric power line to the property is completed. Development of zinc ore body over period of several months has resulted in blocking out of substantial tonnage of good ore. Production of gold ore is expected to continue in conjunction with zinc mining.

Property is operated by Red Cloud Mines, Inc., J. H. A. Williams, mgr., Hornitos.

ers of U. S. Bureau of Mines, and R. E. Snoberger of WPB's salvage division. A full and open discussion by mining men followed each of the addresses.

On Monday evening a number of informal group conferences were held at which producers of various war metals considered their particular problems in round-table discussions.

On Tuesday addresses at the morning session featured consideration of mine manpower problems, with discussion between mine operators and Generals Hershey and McSherry. In the afternoon Assistant Price Administrator Donald H. Wal-

Heard Along the Road

By RAMBLIN' RUBE

*Though thankful for a lot of things,
Among my thanks are none
For pompous gents who "Plan the
Peace",
Before the Peace is won.*

* * *

Boys, if the present shortage of bacon and coffee continues, things don't look so good for the prospectors' fraternity. Bearing in mind the feeding habits of the average prospector, if you take away his bacon and ration his coffee, what is the poor guy gonna eat, anyway? Besides, I resolve right now that the day when I stop in to say "howdy" at some guy's camp and find him drinking tomato juice and eating Melba toast, that's the day I quit mining for good.

* * *

As for me, as long as I been in long pants I been drinking at least five cups of coffee a day, but spring water will probably be better for me. The only other attractive alternative has advanced fifty cents a quart in price.

* * *

Still, as long as beans can be had, the miner's standard of living is not so seriously threatened. I have laid in quite a hoard of these delicacies at Bellyacres, my Sierra ranch.

As a result of the meeting both mining men and war agency officials hope to develop a more thorough understanding of the mining industry's problems, which will aid in removing impediments to maximum production of the war metals.

Worthen Bradley, president of the California Chapter of AMC, headed the California delegation. Convention arrangements are in charge of Julian Conover, Congress secretary.

Boys, a bean shortage would really be a calamity.

* * *

As a matter of fact, war shortages can turn out to be an advantage. I read somewhere that open-toed shoes for ladies are kayoed in England right now, and probably sooner or later in the U. S., since they come under the heading of fancy footgear. So pretty soon now our American cities may no longer have wholesale displays of ladies' big toes. Even in my most tender moments, boys, I fail to appreciate the beauty in a lady's big toe. As such.

* * *

The WPB has agreed to resurvey the effect of its closing the gold mines. After all, I guess some of those Washington boys realize that mining is not properly seen or understood from a soft seat in a Washington cocktail bar or even a swivel chair behind a nifty glass-topped desk.

* * *

They say the Homestake miners from Lead were all told to go to Butte or to the Utah copper mines but instead these guys are going

(Continued on Page 10)

Mining & Contract. Review Jan. 4 1938

The Gibson Gold Mining Co., Portland, has been incorporated by Charles W. Erskine, Fred Gronnert, and Irving Rand. Irving Rand is legal representative.

Record Courier

THURSDAY, JANUARY 13, 1938

Buffalo Mine Is Under New Hands

**Work Started Near
Granite by Gibson**

Sumpter—(Special) — The Buffalo mine near Granite has been taken over by the Gibson Gold mining company. A crew will start work this week under the supervision of Mr. Amidon.

Mining & Contract. Review ^{Apr 5} ~~Jan 11~~ 1938

Grant County

The **Gibson Mining Co.**, operating the **Buffalo** mine in the **Granite** district is now operating the company mill. **R. G. Amadon** is manager.

R. G. Amadon, manager of the **Buffalo** mine, near **Granite**, has employed a crew all winter and is getting the mine in full operation.

The Mining Journal, April 30, 1938

A small crew has been employed at the **Buffalo** mine near Granite, Oregon, throughout the winter and preparations for full operations are now under way. R. G. Amidon of Granite is the owner and operator.

The Mining Journal, May 30, 1938

The **Gibson Gold Mining Company** has been employing a small development crew at the Buffalo Consolidated Gold Quartz mines near Granite, Oregon, since January 10, 1938. Regular shipments of gold, silver, lead, and copper concentrates will be started soon from the flotation mill on the ground. R. G. Amidon of Granite, who has long been interested in the property, is vice-president and manager. Roy Gibson is president and C. D. Buckner is secretary.

Eastern Oregon News, Baker
September 23, 1938

No. 4 Vein At The Buffalo Is Cut

Reports from Granite state that the crosscut, R. G. Amadon, manager of the Buffalo mine has been driving from No. 3 vein to No. 4 has cut the vein and has a good showing of ore. The new find is being developed with very encouraging results.

FIRE DESTROYS BUFFALO MILL NEAR GRANITE

**Cause of Fire Has Not
Been Determined,
Loss Complete**

MINE HAS BEEN IN PRODUCTION

**Buffalo Mine One of the
Old Time Gold and Silver
Producers of the Gran-
ite district.**

Fire destroyed the flotation mill at the Buffalo mine north of Granite yesterday. The loss is reported as being complete and that little if any of the machinery in the mill building can be salvaged. What was the cause of the fire has not been determined. It was not known at the mine if the plant was insured.

Bruce Dennis of Portland and former Baker resident, is the principal owner. He became interested in the property more than a year ago, and conducted development work in the mine for several months. Several months ago production was resumed at the mine and has been continuous since. The mill was in operation concentrating the lower grade ores, while the high grade was shipped crude with the concentrates to the smelter at Tacoma.

The loss of the mill will be felt severely at the mine, but whether it will cause closing of the mine or what steps may be taken toward rebuilding, is not known here.

Mr. Dennis makes his home at Portland and makes occasional visits to the property. Active management of the mine is in charge of Frank Allen, who came to the Buffalo from southern California, about a year ago.

The plant was a modern flotation mill with a capacity of about 35 tons per day. It was built about 15 years ago, and the loss is probably close to \$35,000.

The Buffalo mine is one of the older mining properties of the Granite district. It was discovered more than 60 years ago by the Beagle brothers, at that time well known miners of the district. Some of the first ore taken from this discovery was treated in an arrastra built about three miles from the mine on Granite creek.

For many years practically all the ore produced was shipped to smelters. After the plant which was burned yesterday was built the production of the mine was increased.

Judge Norbone Berkeley of Pendleton, was formerly interested in the mine and had a large part in the building of the plant which was burned.

Buffalo
Granite
Grant.

Baker Record Courier Oct. 17 1940

MILL IS STARTED

Hugh Lancaster, geologist for the state department of geology and mineral industries, reports that the Buffalo mine, located north of Granite, turned over its new flotation mill for the first time on Saturday. The old mill burned to the ground over a year ago and construction has been under way on the new plant since spring. Bruce Dennis is owner of the property and W. F. Allen Jr. is superintendent. The mill will handle as much as two tons of ore per hour. Besides having shipped some ore the mine has much ore on hand from the Constitution claim.

The Mining Journal - Feb. 5, 1941

The Constitution Gold Mining Company, operating the Buffalo mine near Granite, Oregon, is treating 25 tons of gold ore daily in the new 35-ton flotation mill completed last October. Underground development consists of drifting on the Constitution vein. A crew of 12 men is employed under the direction of W. F. Allen, Jr., of Granite. The property is owned and operated by Bruce Dennis, 403 Pacific Building, Portland, Oregon.

Mining Shipping Ore at Continental

Jose Haskins and sons, operating a lease at the Continental mine near Granite, are reported to be mining shipping ore. The ore which is high-grade as shown by samples, is being opened up to determine size of the body. The Continental belongs to J. A. Gyllenberg, who operates a machine shop in Baker.