

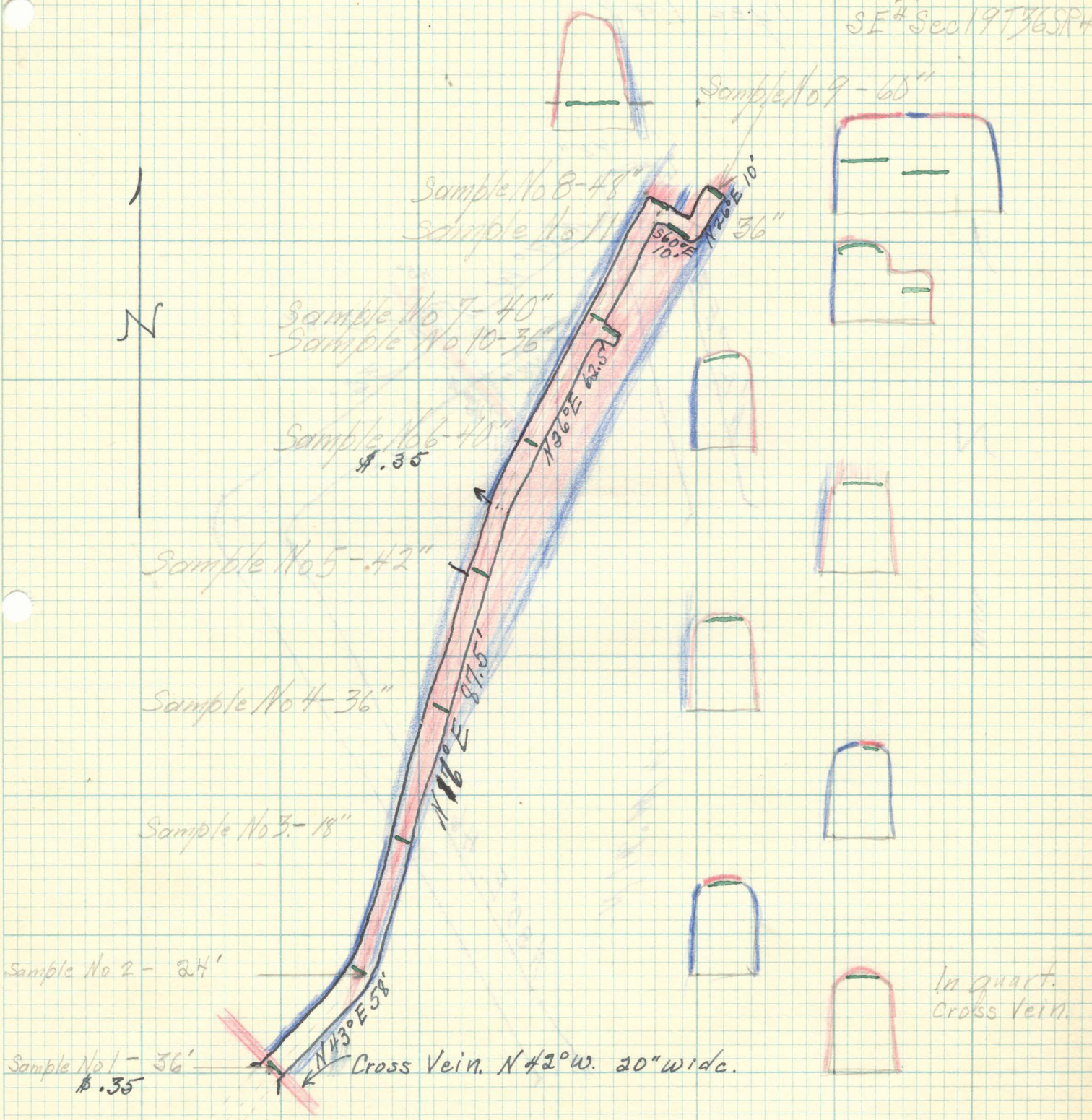
4/11/38

Big Chief.  
East Tunnel.

Geo E. Kearns.

Elev. 1300'  
SE# Sec 19 T36 S14 E

N



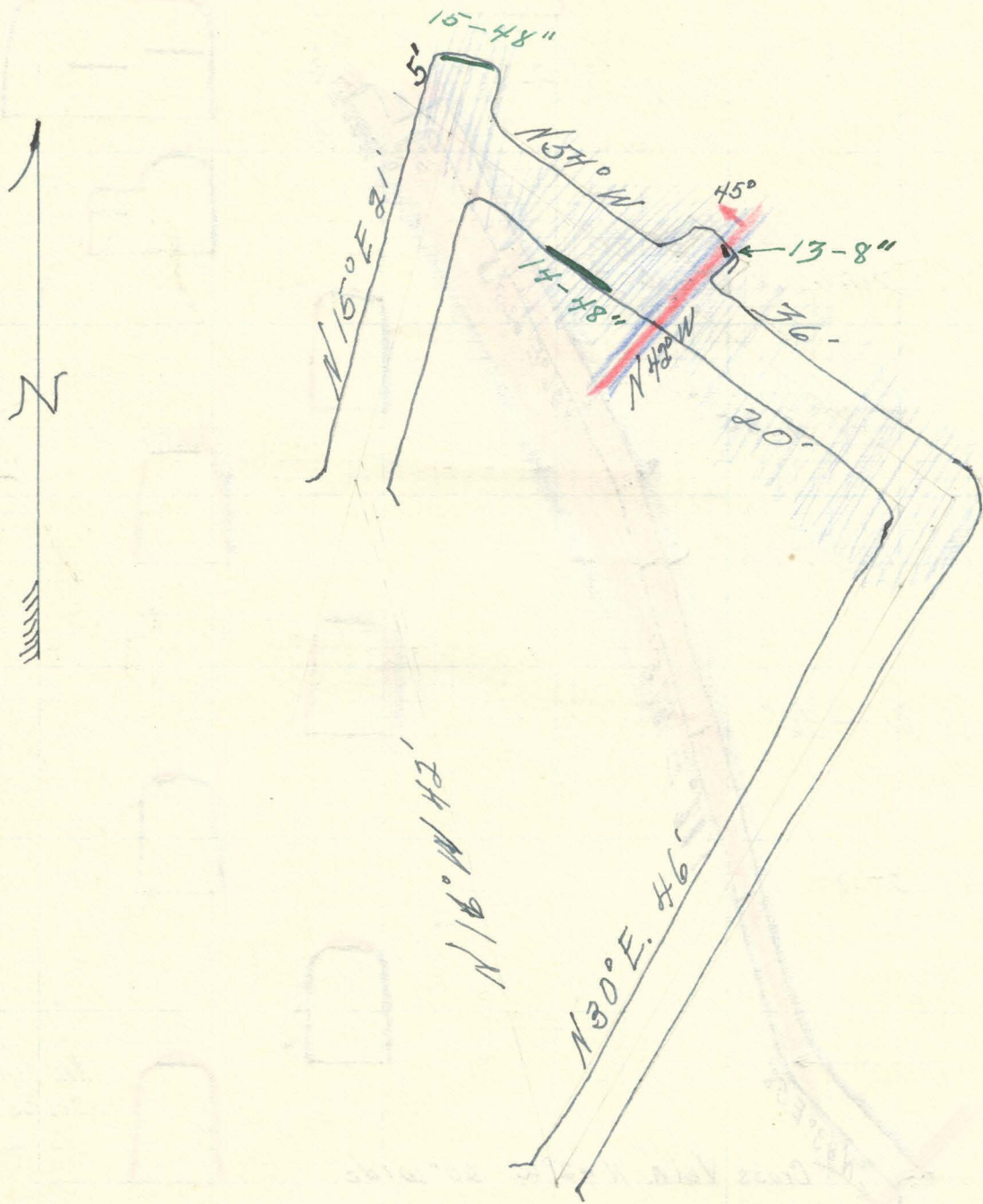
Scale 1" = 25'  
 Quartz - —  
 Porphyry - —  
 Sample - —

Sample No 12 Surface. Slope of hill 28°



West Tunnel. - Big Chief.  
 Tye 142

4/12/38



Sample No 16 take about 100' west of tunnel in small open cut.  
 48" porphyry

Scale 1" = 10'  
 quartz - -  
 Porphyry - -  
 Sample - -