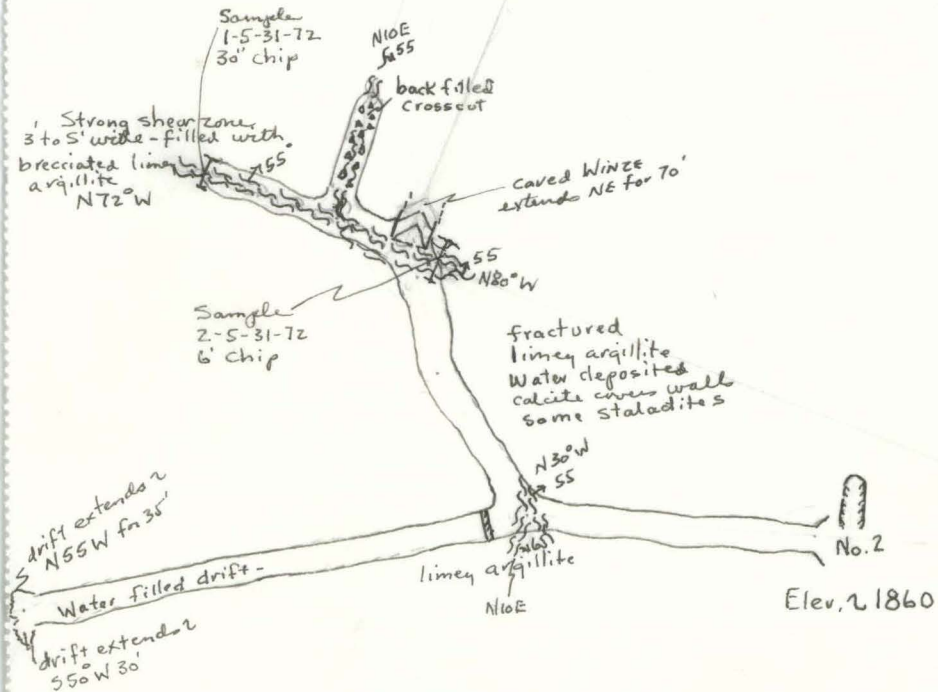


Narrow multiple shear zone with
 Calcite seams, strike N82°W, dips N35 to 60°
 Shear 2-3 inches + swells from 3 inches to
 10 inches, exposed from left side in back
 to right side at Sill. Free gold ore packet
 in face, Mn oxides + Fe oxides present.

Country Rock -
 Meta-basalt?
 - Andesite?

No. 1

Elev. ~ 1800'



DIXIE (DIXIE QUEEN) MINE

AU LODE

NE 1/4 SE 1/4 NW 1/4 Sec. 18, T37S., R3W.

Gold Hill District

JACKSON COUNTY, OREGON

Scale 1 inch = 30 feet

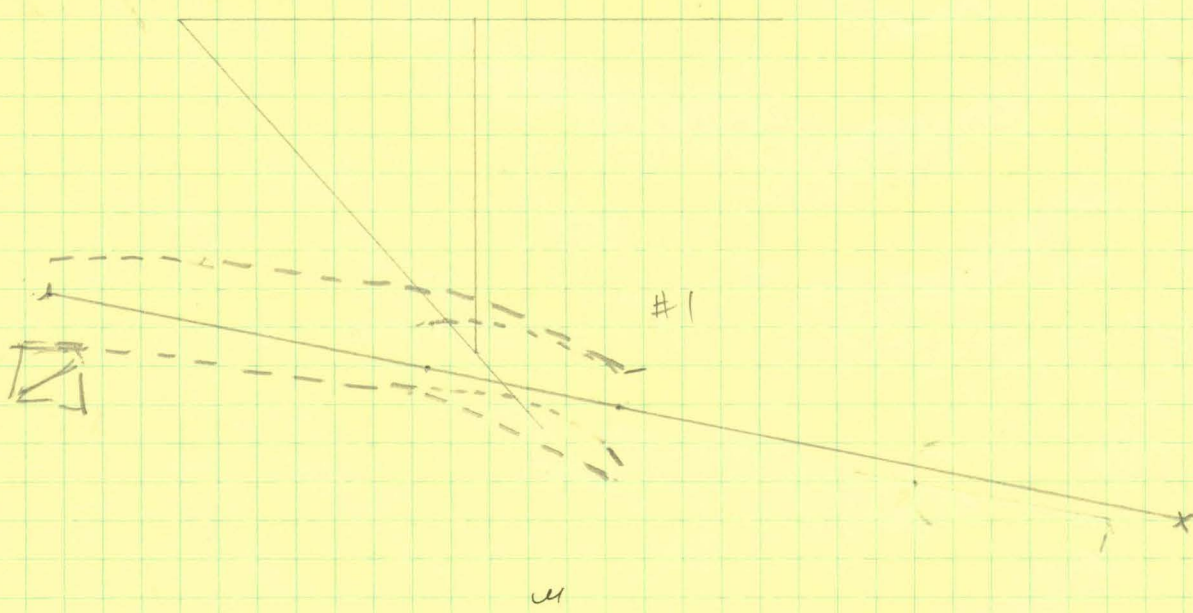
Map - Branton Compass + Tape survey by
 L. Ramp + N. Peterson JUNE 1, 1972

1. N80W - 30' to portal
2. N80W - 28' to face

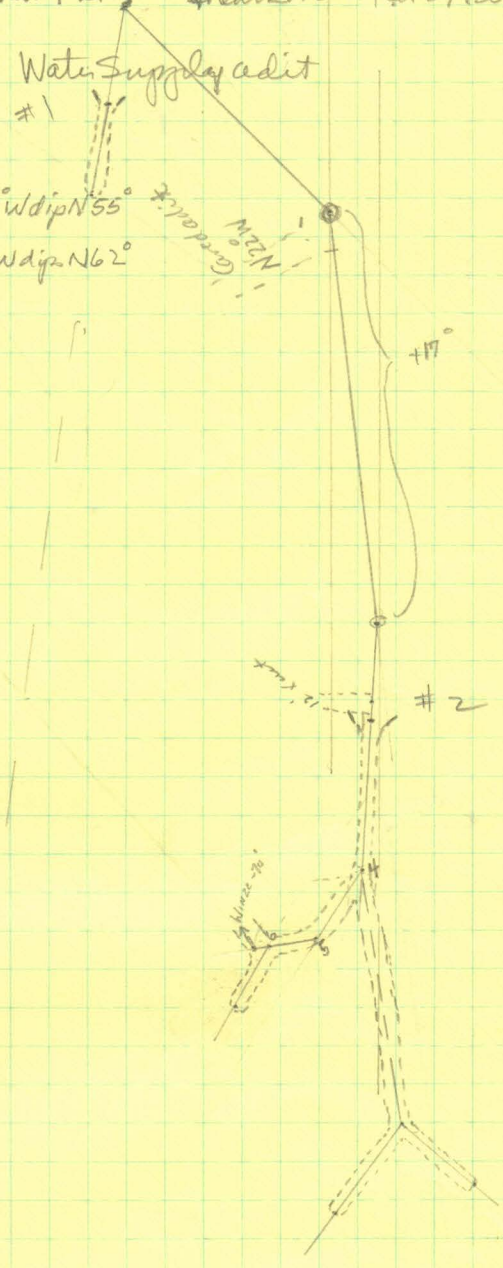
NE 1/4 SE 1/4 NW 1/4 Sec. 18, T. 37S., R. 3W

Elw N 1800
 SE 1/4 N 1/4, Sec. 18, T. 37S., R. 3W

Country rock is hard! gray
 meta-basalt or meta andesite
 possibly meta-ss/wacke
 Shear with ^{multiple} calcite seams
 N82W dipping N37°-58°
 about 3" wide - Shear is
 confined to 1" to 10" wide
 pinches + swells -
 exposed from left side in
 back to sill.



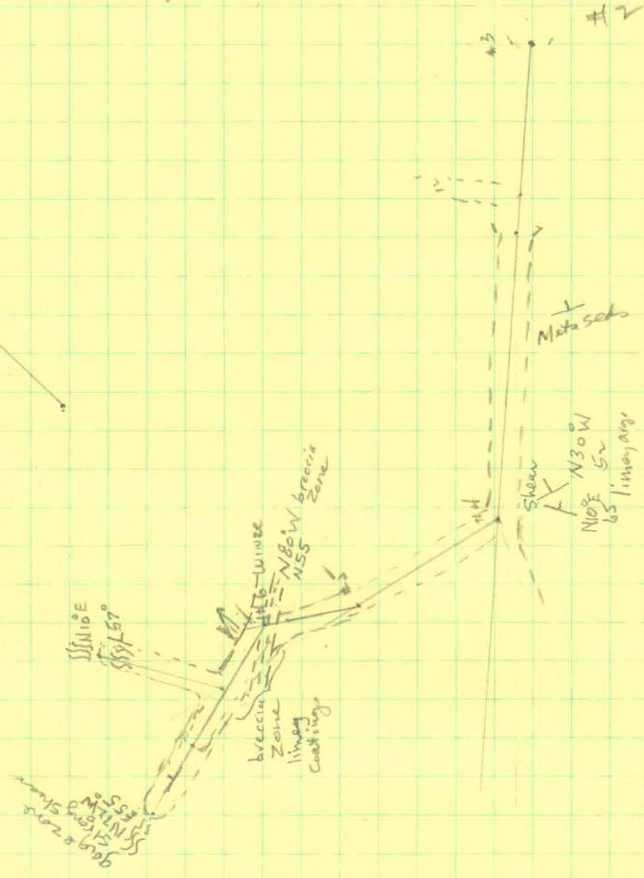
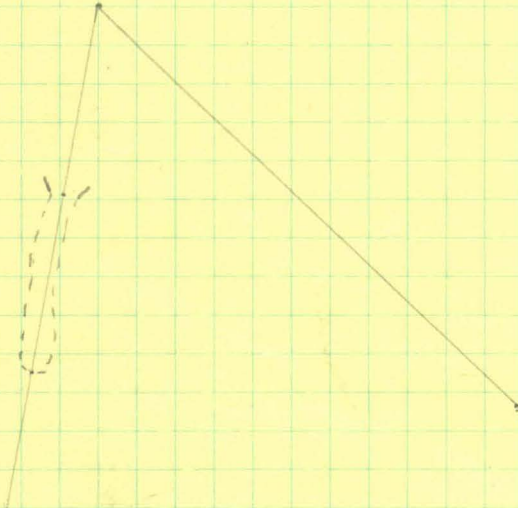
- ① S45°W - 90' + 8°
- ② S79°W - 130 + 17°
- ③ N87.5°W ~ 29' to portal - (X-cut at 24' - 12' long) 74' to sta. 4 at Y - Shear Zone in floor N30°W dip NE 55°
- ④ S81°W to another Y 80' - ① N55°W - 35' ② S55°W - 30' Water Supply adit
- ⑤ N32°W 26' to sta 5 turn to right
- ⑥ N70°W ^{15' to sta 6} _{20' to Winze + drift in shear zone N80°W dip N55°}
 11' to || shear - gouge lined & fastened N80°W dip N62°
- ⑦ drift + N10°W 12' to X-cut + 22' to face
 N15°E - 20' to face (X-cut back filled)



145
 45
 41
 34
 70

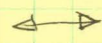
 325



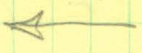
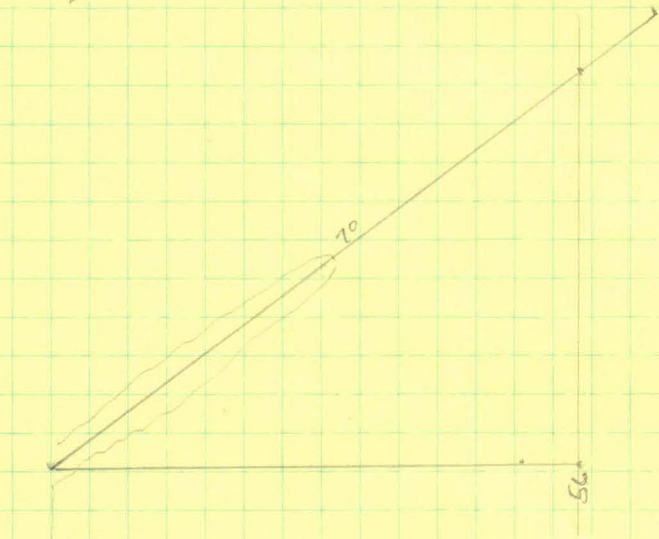


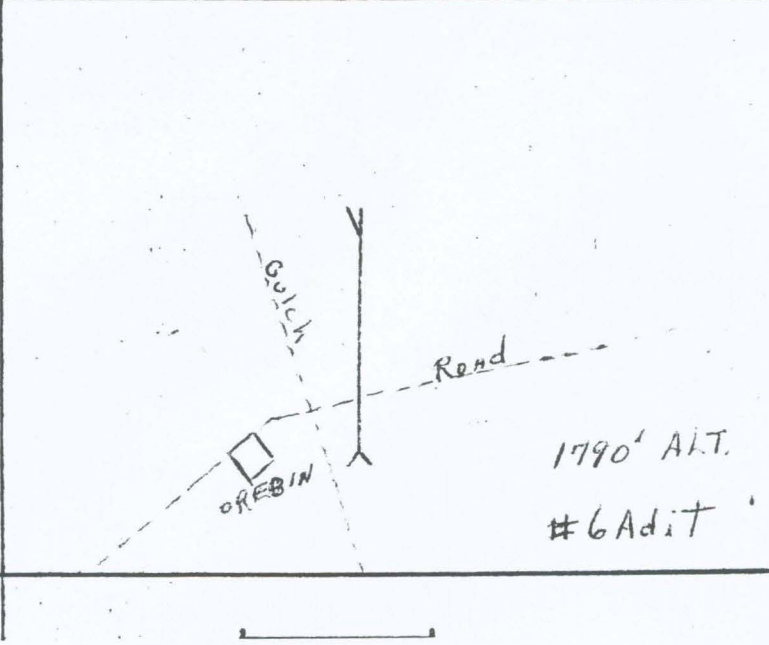
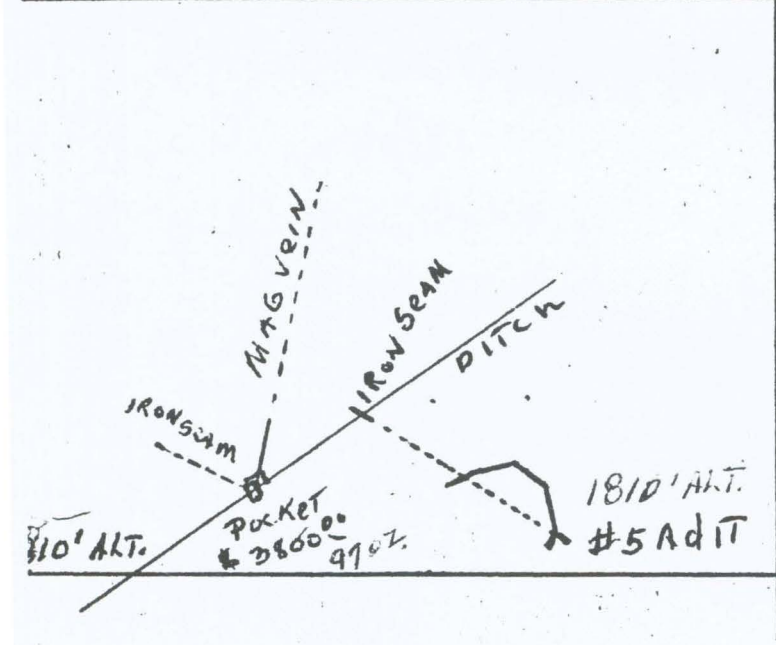
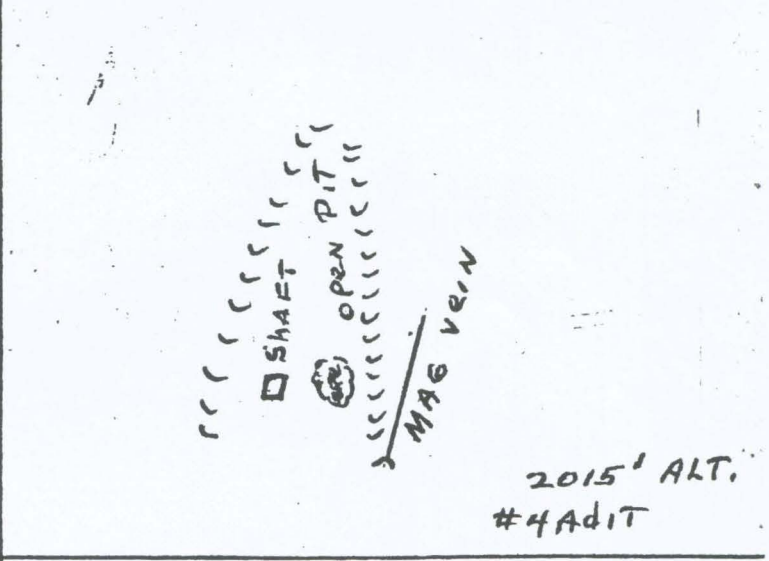
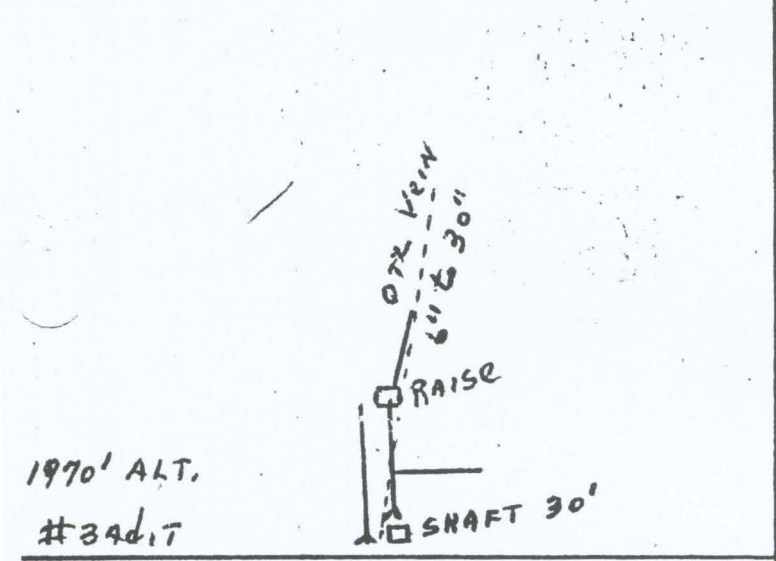
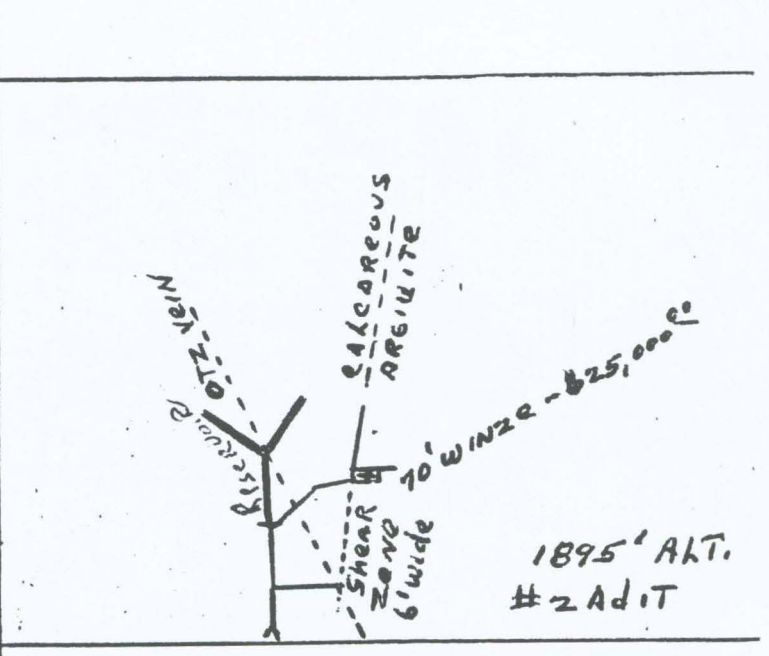
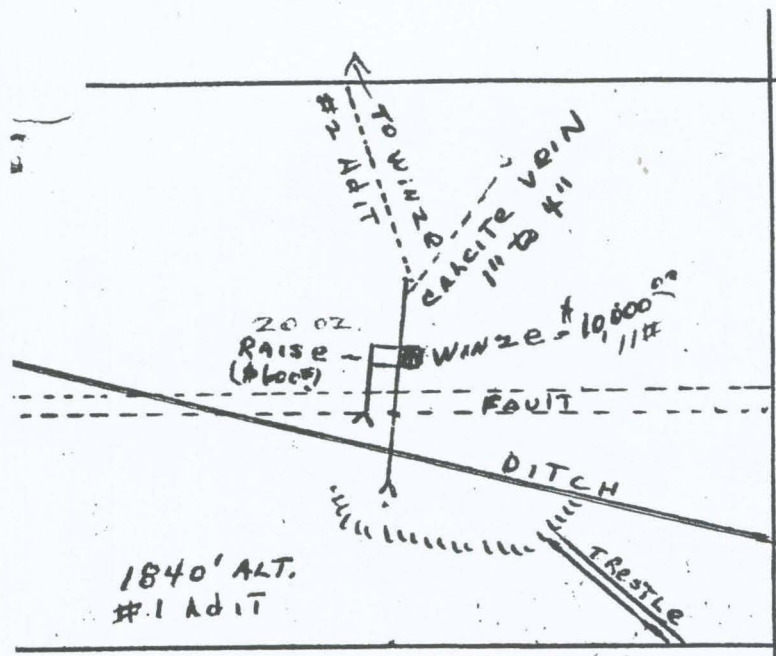
1.09

5-11-10
 5-11-10
 5-11-10



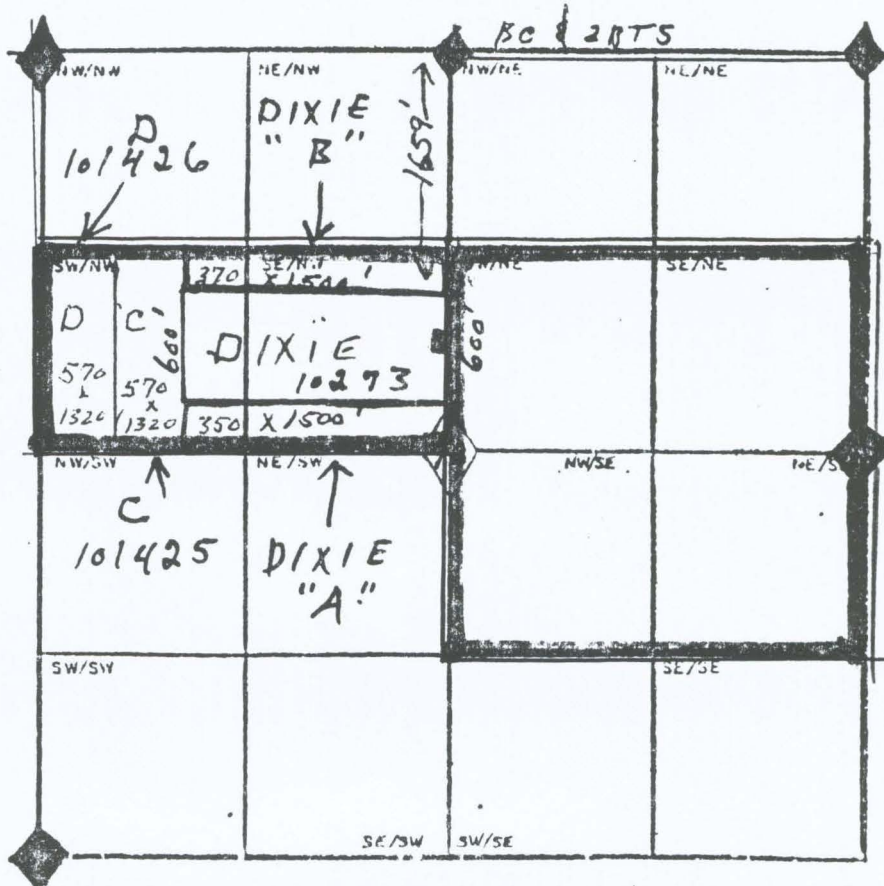
2000





Township 37 S Range 3 W W.M. Pogue River, Sec. 18
One.

Sec. 18: DIXIE MINE S. $\frac{1}{2}$ of the N. $\frac{1}{2}$



Comen located by County Surveyor.

Signature Ray Wolf
Date 9-6-78

Schist zone

