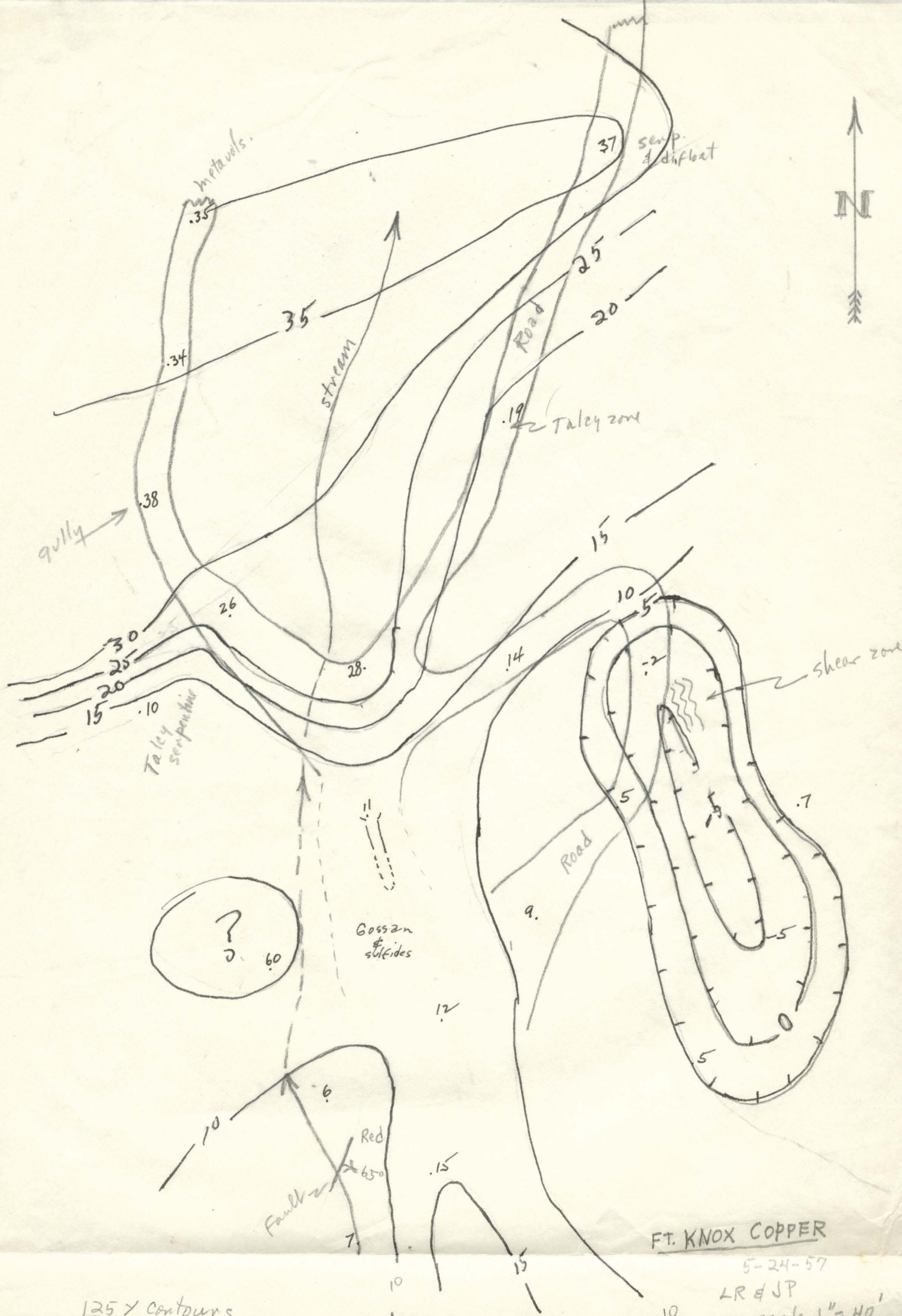
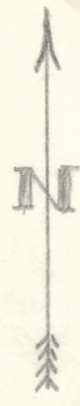


FT. KNOX COPPER

Magnetometer Survey  
125 Y contours

LR+JP 5/24/57

Scale 1"=40'



125' contours

FT. KNOX COPPER

5-24-57

LR #JP

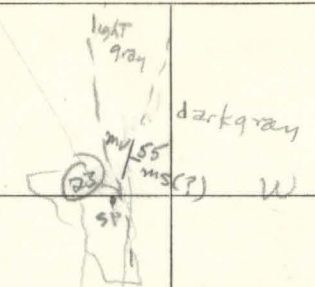
scale 1" = 40'

10

Mgt Fort Knox CU ②  
 L.R. JWP 5/24/57

21 = 36.5  
 22 = 26.0  
 23 = 17.7  
 24 = 35.0

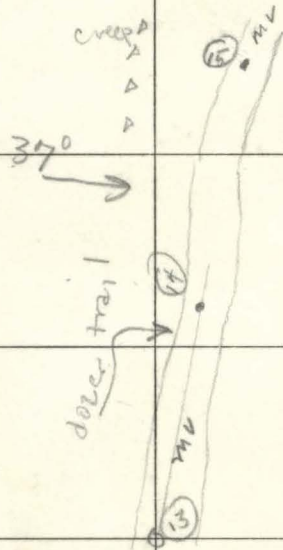
25 = 51.4



22.  
 bleached  
 mv

27  
 # SP float

20 ← Take zone



S. 1/2 m

9/14 → 13

Fort Knox Cu KR 5/24/57 SWP

40' = 1"

- sta 1 = 12.2
- 2 = 6.4
- 3 = 59.6
- 4 = 7.3
- 5 = 15.2
- 6 = 9.3
- 7 = 4.5
- 8 = 2.0
- 9 = 13.7
- 10 = 27.7(?)
- 11 = 11.0
- 12 = 26.2
- 13 = 37.6
- 14 = 33.7
- 15 = 34.5
- 16 = 10.3
- 17 = 5.4
- 18 = 4.9
- 19 = 6.8
- 20 = 19.0

