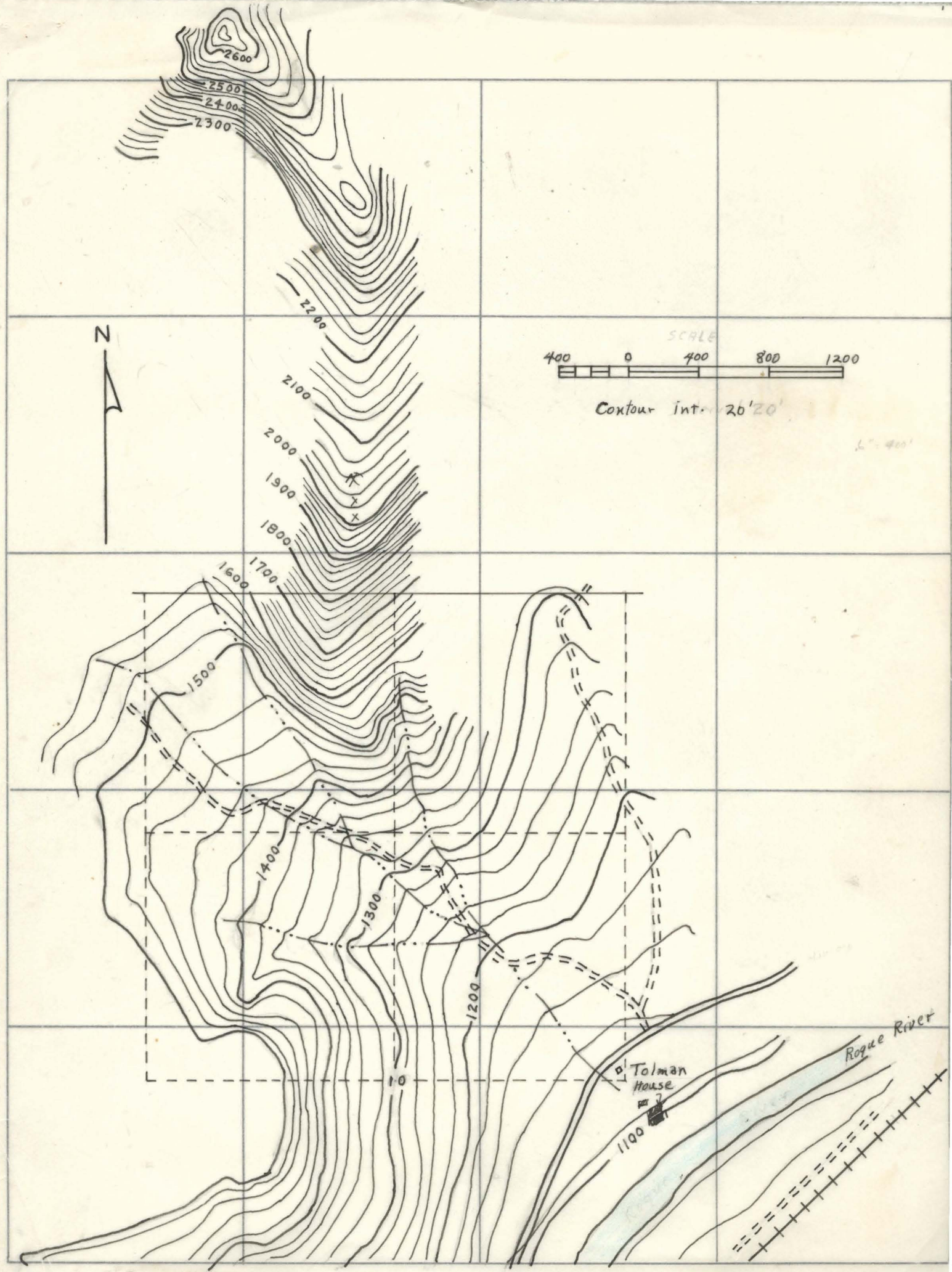


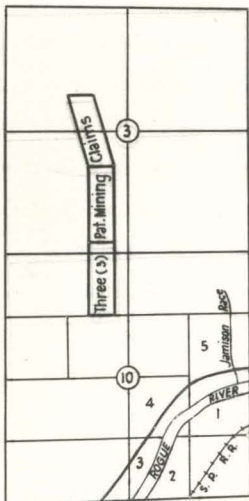
Tolman Iron Deposit, Jackson County, Oregon





Gold Hill

KEY MAP
 SCALE: 1" = 2 Mi.
 Contour interval 250'
 — Iron Deposit.



To Gold Hill, 2 mi.

CLAIM MAP
 SCALE: 2" = 1 mi.



PROPERTY MAP
 SEC. 3-10-15, T.36S, R.3W.
 SCALE: 2" = 1 mi.