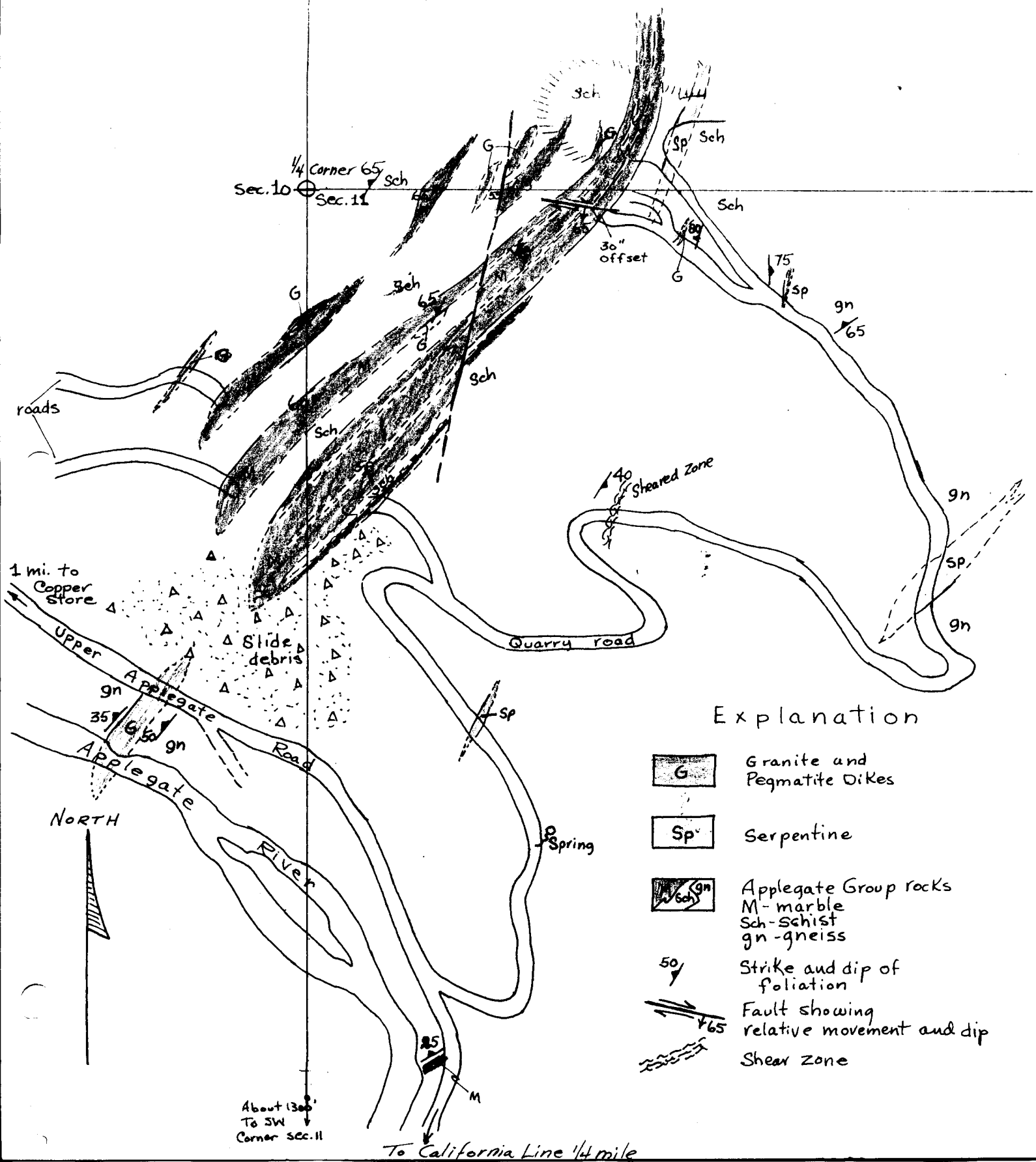


40 120 160 200 240 280 320 360 400 440 480 520 560 600 640 680 720 760 800 840 880 920 960 1000
 1000 900 800 700 600 500 400 300 200 100 0
 (Scale of 1 inch = 100 feet)

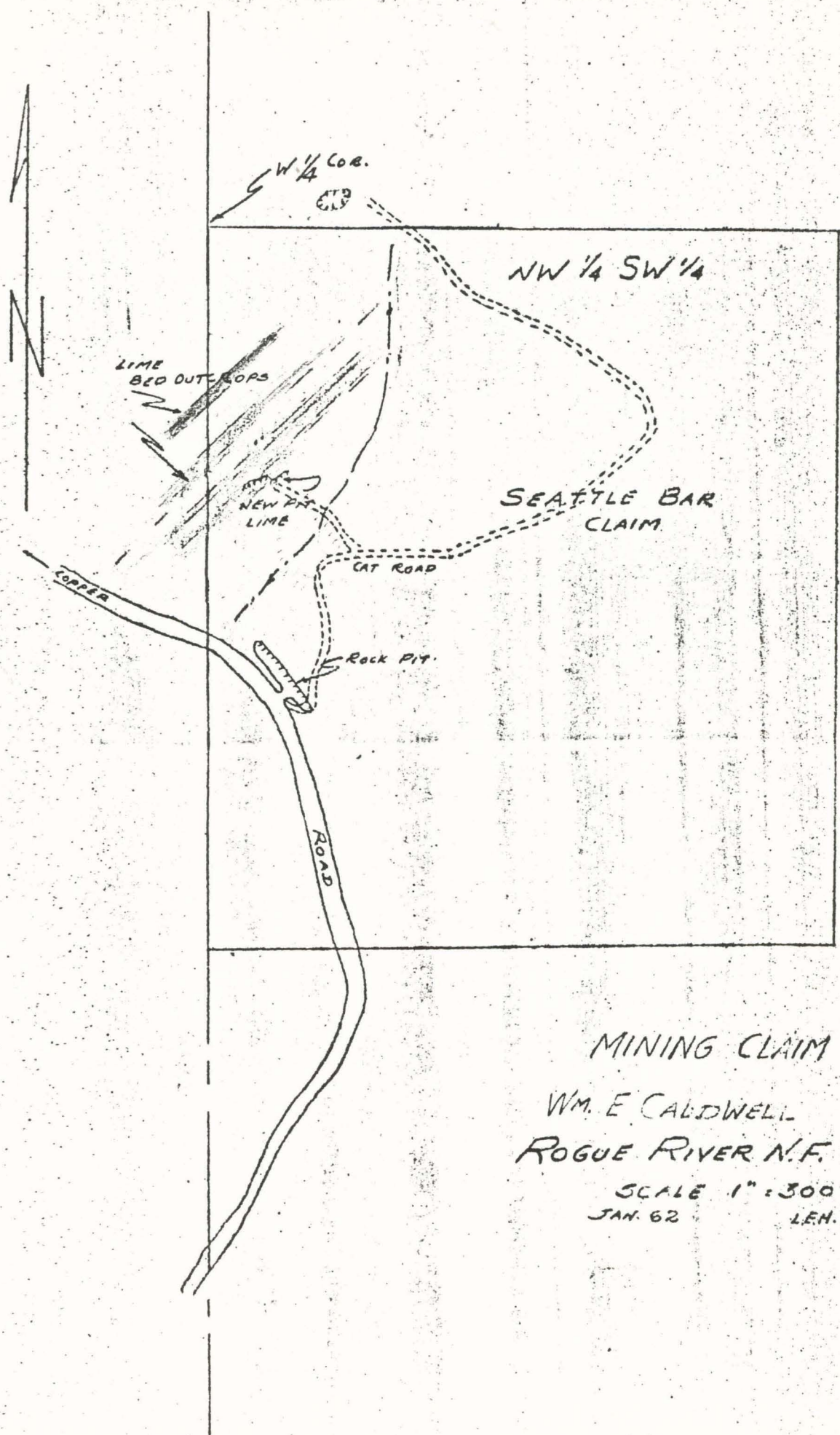


Explanation

- G Granite and Pegmatite Dikes
- Sp Serpentine
- gn
Sch Applegate Group rocks
 M-marble
 Sch-schist
 gn-gneiss
- 50° Strike and dip of foliation
- ↔ 65° Fault showing relative movement and dip
- ~ Shear zone

About 1300' To SW Corner sec. 11

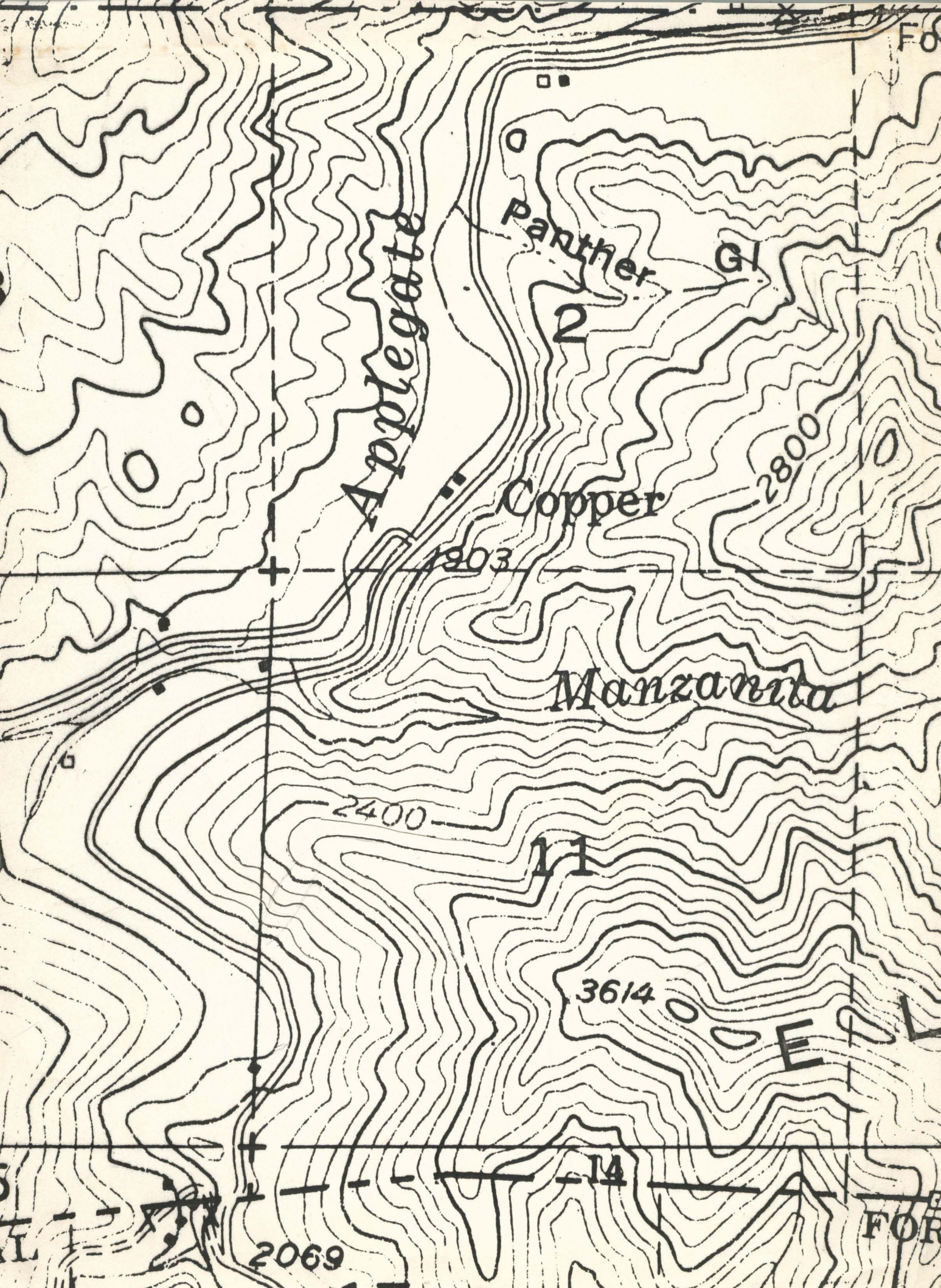
To California Line 1/4 mile



MINING CLAIM
 WM. E CALDWELL
 ROGUE RIVER N.F.
 SCALE 1" = 300'
 JAN. 62 L.E.H.

10 11

TALS BAW



Applegate

Panther

Copper

Manzanita

GI

2

1903

2800

2400

11

3614

14

2069

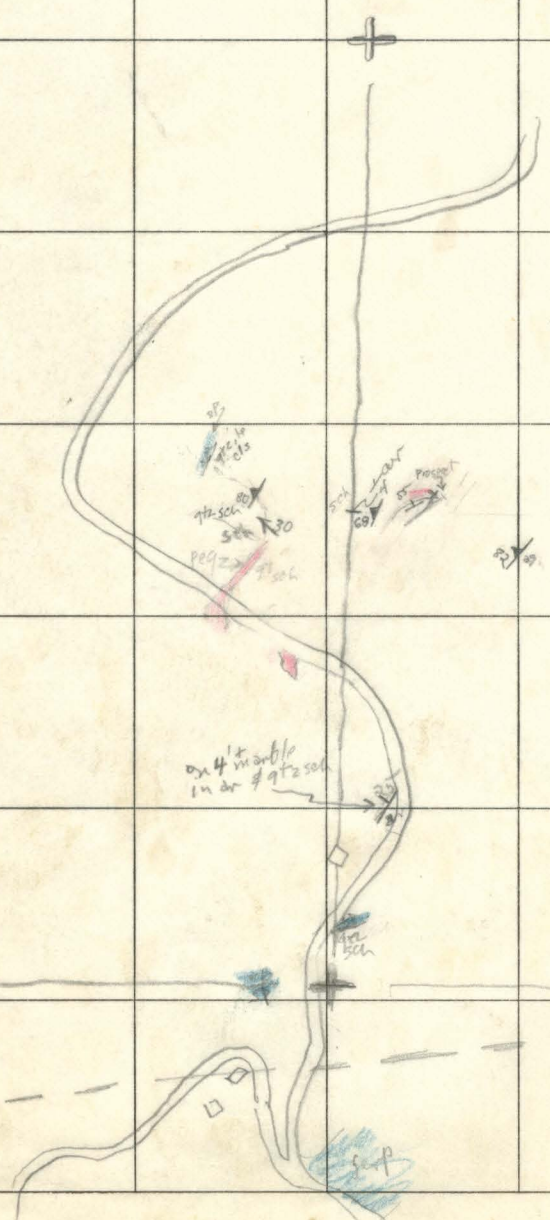
F O

F O

N Seattle bar Limestone

cls = chlorite schist
 sp = serpentinite
 qtz = quartzite
 sch = mica schist
 [red box] = pegmatite (granite)
 ls = limestone
 x = prospect cut
 qgn = gneiss

30 line near
 - qtz mica schist
 near 1000 = 1



on 4' marble
 in dr # qtz sch

Oreg
 Calif