

VERTICAL SECTION OF CROSS-SECTION "C"

Hor. Scale 1" = 100'

Ver. Scale 1" = 50'

Sterling Creek - Jackson Co. Oregon

1841



Cross-section  
 Sta. 1 EL 3198   Sta. 2 EL 3177   Sta. 3 EL 3186   Sta. 4 EL 3193   Sta. 5 EL 3200   Sta. 6 EL 3207   Sta. 7 EL 3211   Sta. 8 EL 3220   Sta. 9 EL 3223   Sta. 10 EL 3230   Sta. 11 EL 3243   Sta. 12 EL 3257

Drill Hole (Kerite), #1  
 EL 3207

N. End of stripped ground  
 EL 3167

S.E. End of stripped ground EL 3134

7th East Bank  
 EL 3167.4

Bank Sample B

Bank Sample C

(Bank Sample A is off)

Scale 1" = 50'

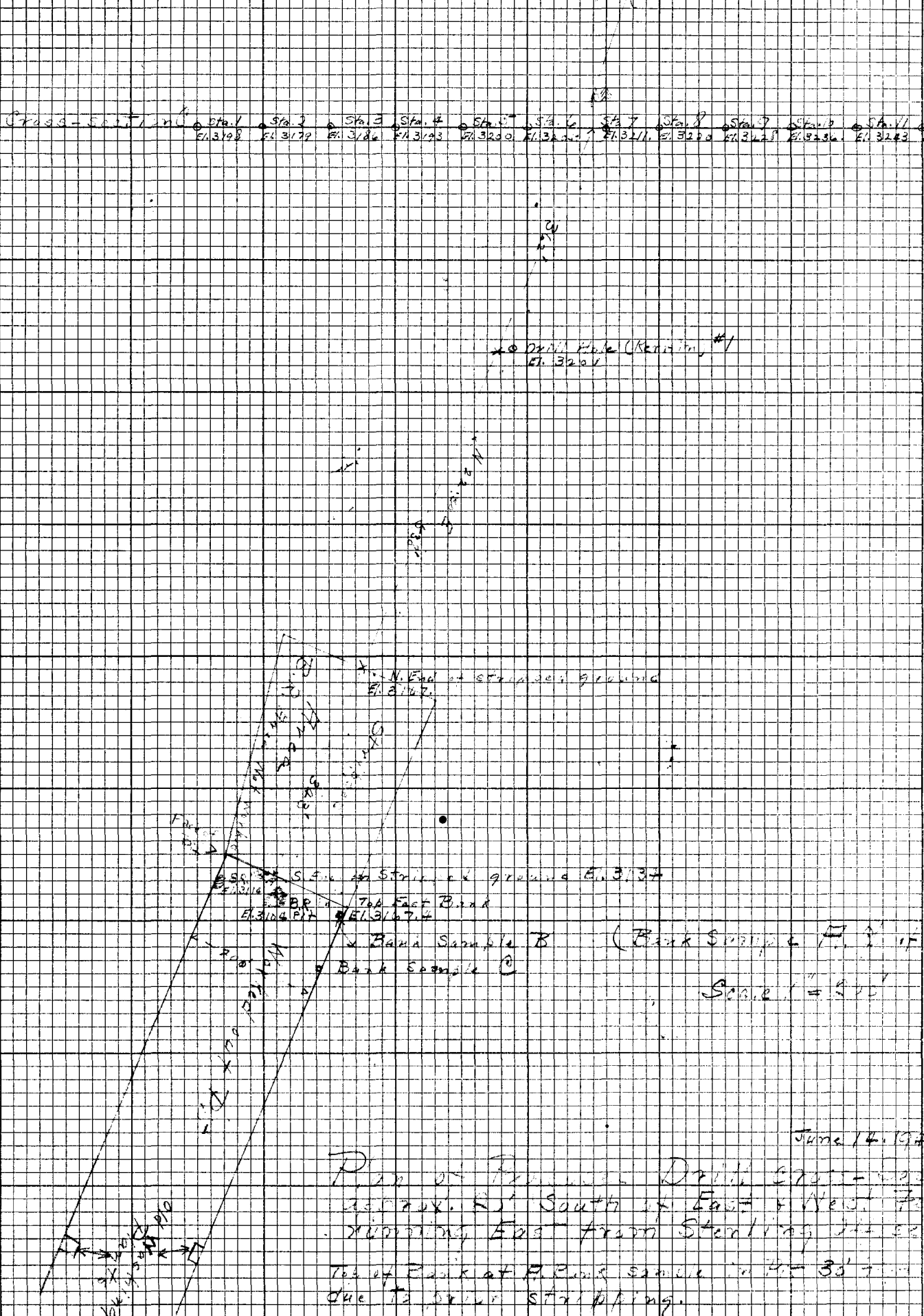
June 14, 1947

Plan of Proposed Drill Cross-section  
 across N. South of East & West  
 Trenches, East from Sterling

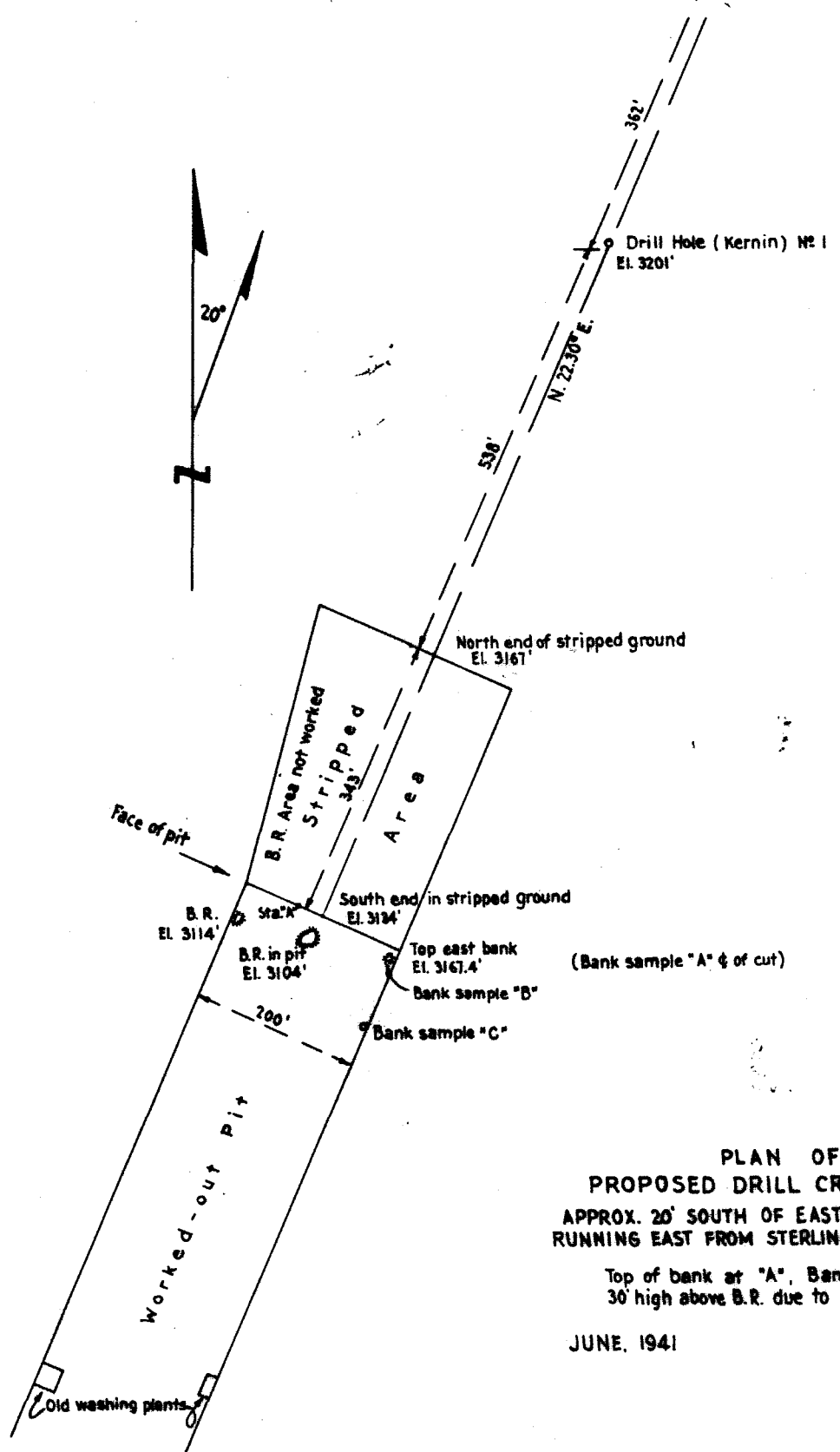
Top of Bank at E. Point sample in 4-35' from  
 due to lower stripping.

342  
 107  
 86  
 1713

(1)



Cross - Section "C"    Sta. 1    Sta. 2    Sta. 3    Sta. 4    Sta. 5    Sta. 6    Sta. 7    Sta. 8    Sta. 9    Sta. 10    Sta. 11    Sta. 12  
 EL. 3198'    EL. 3179'    EL. 3186'    EL. 3193'    EL. 3200'    EL. 3205'    EL. 3211'    EL. 3220'    EL. 3228'    EL. 3236'    EL. 3243'    EL. 3251'

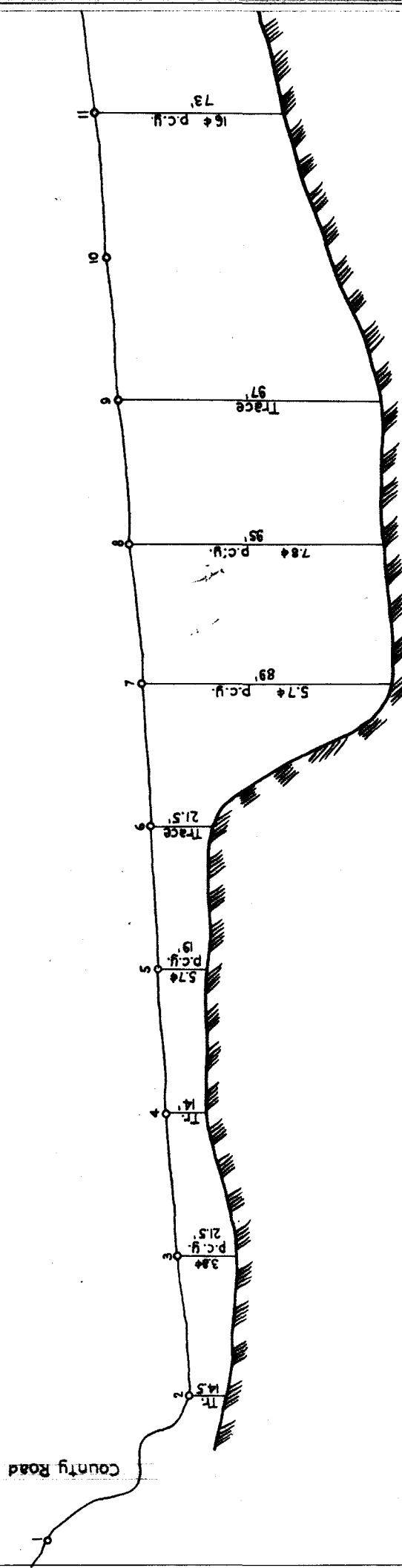


**PLAN OF  
 PROPOSED DRILL CROSS-SECTION  
 APPROX. 20' SOUTH OF EAST AND WEST FENCE  
 RUNNING EAST FROM STERLING OFFICE BUILDINGS**

Top of bank at "A", Bank sample in pit  
 30' high above B.R. due to prior stripping

JUNE, 1941                      SCALE: 1" = 200'

Old washing plants



VERTICAL SECTION of CROSS - SECTION "C"

Hor. Scale: 1" = 100'  
 Ver. Scale: 1" = 50'

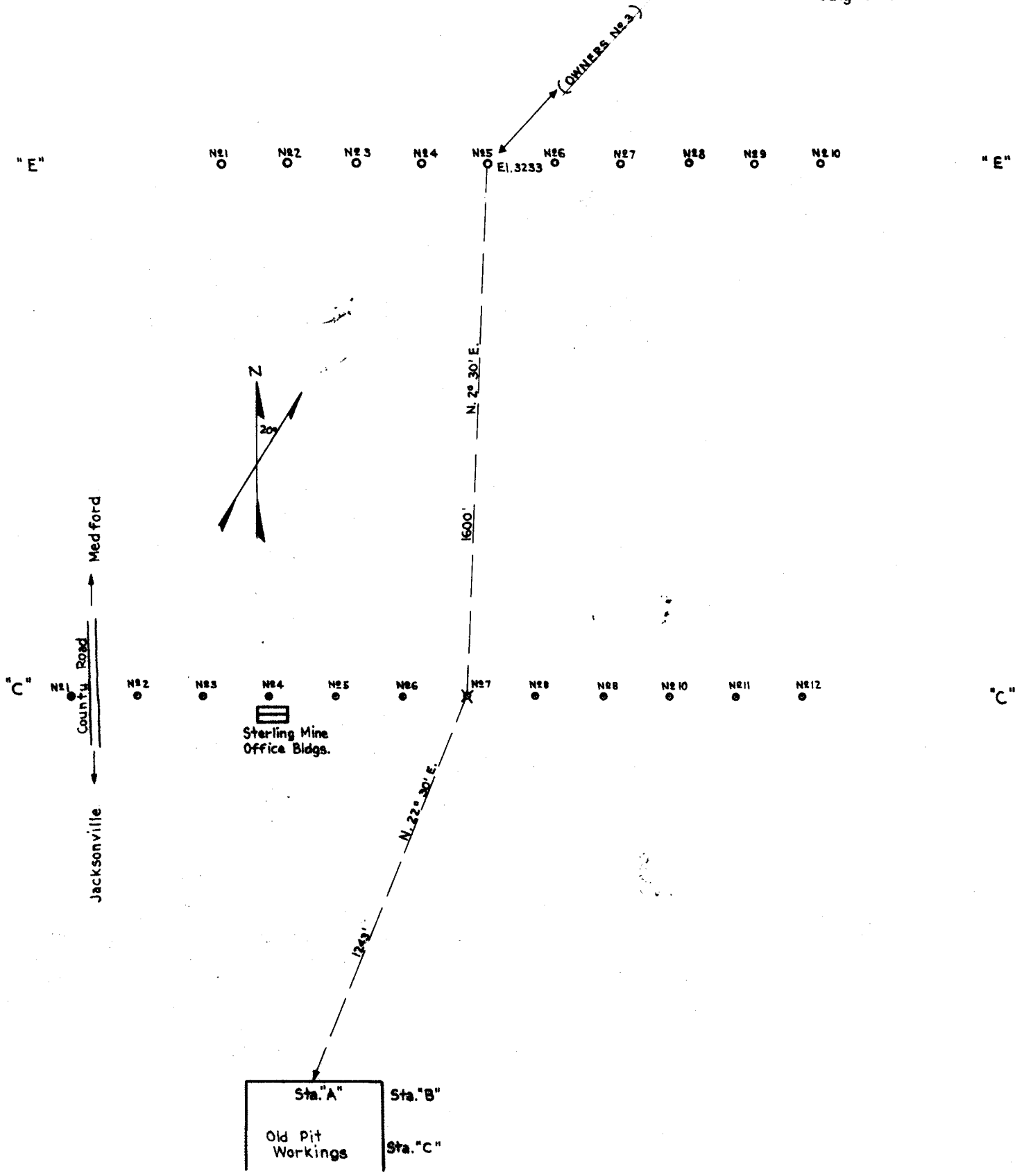
STERLING CREEK - JACKSON CO. OREGON

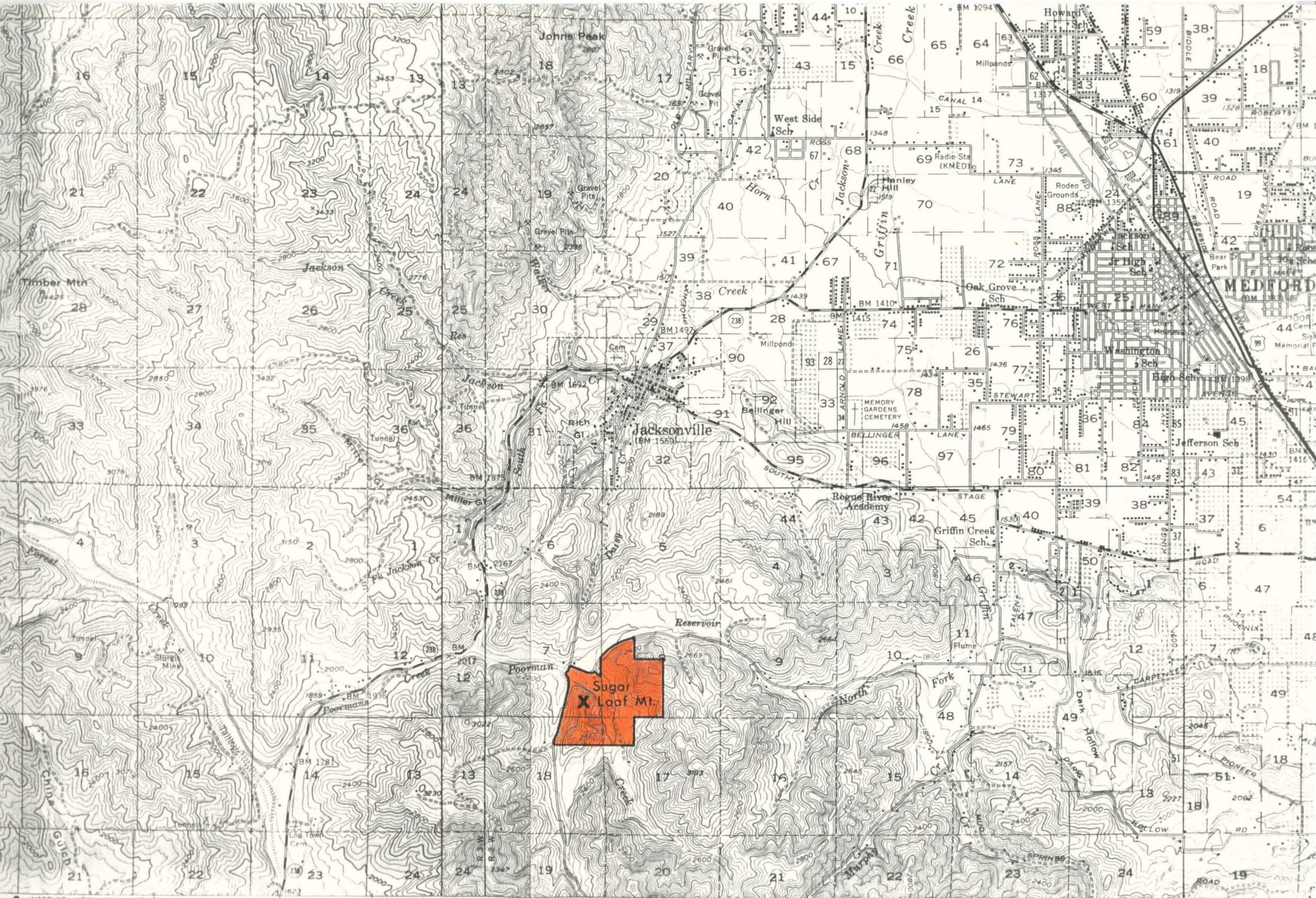
1941

STERLING MINE

Scale: 1 Inch = 200 Feet

July 15th 1941



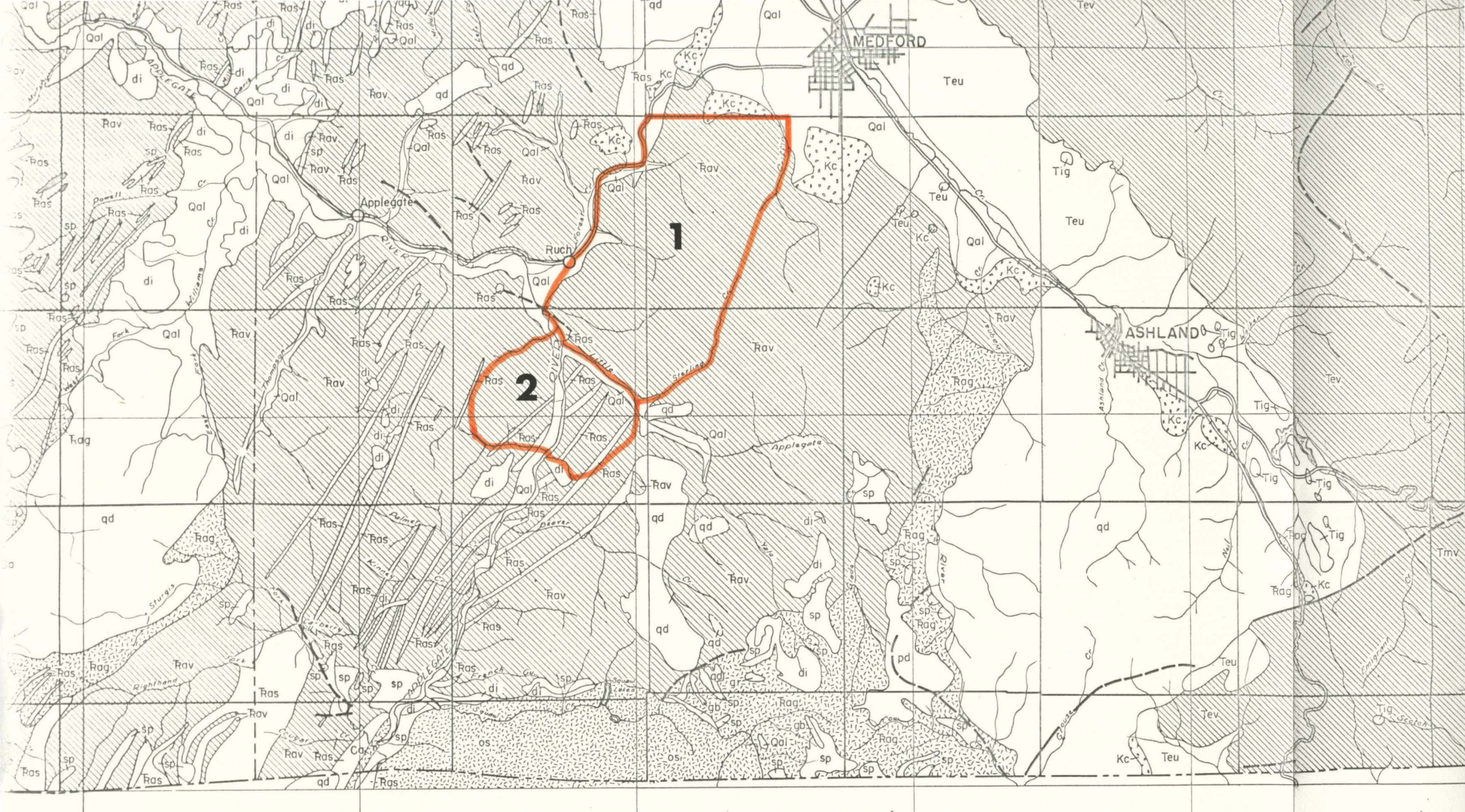


INTERIOR—GEOLOGICAL SURVEY WASHINGTON D. C. 20541 R. 3 W. 498000m E. 123°00' 11 330 000 FEET BUNCOM 7 MI. R. 2 W. 55' (TALENT)

ROAD CLASSIFICATION

Mapped, edited, and published by the Geological Survey

SCALE 1:62500



**GEOLOGIC MAP OF SOUTHWESTERN OREGON**  
 122° WEST, AND SOUTH OF PARALLEL 43° SOUTH NORTH

By Francis G. Wells



1955

