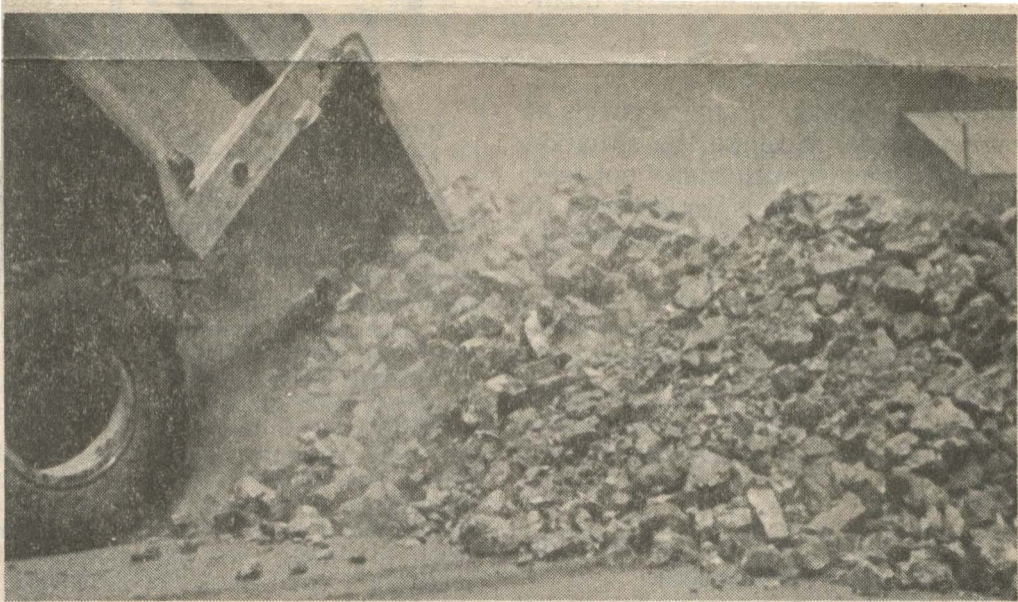




ERNIE McTimmonds stretches out 5-foot shovel handle along top of vein which goes another five foot beyond tip of shovel. He is also standing well onto the vein at the Brass Ledge.



CATERPILLAR clears route in pit in zones in background in white. picture taken from uphill side. Note the ore



FIRST LOAD of copper lode.

...ousmaker. But it worked
itself.

(Continued from Page 1A)

4,000 feet of diamond drilling.

"Bulk samples containing 117 tons of ore have already been sent to the American Smelting and Refining smelter in Tacoms, Wash.

"These samples should give an idea as to the grade of ore that can be expected. It is anticipated that a grade average of 6-8 per cent can be maintained.

"The induced polarization survey will give the location of the hidden ore reserves and then they will be drilled and opened up with a bulldozer.

"Two tunnels are being rehatilitated as they have good ore in them at depth. This known ore will probably be mined this coming spring.

"The known ore in the main pit consists of four different veins, all exposed, with the main vein being exposed over 300 feet long and with an apparent average width of four feet.

"At the present time, six men are being employed at the mine; but on occasion as many as twelve are needed. These men are doing the various jobs such as drilling, shooting, running "Cats" and loaders and making survey lines.

"As more and more ore is uncovered, then it necessitates the hiring of more men for the job of sort-

ing and loading ore in the ore bunker.

"When the ore bunker is fill, Mace Parrish Trucking brings it to the railhead at Grants Pass where Copeland Sand and Gravel loads it on railroad cars for shipment to the smelter.

"As Perry River Nickel Mines Ltd. and Western American Mining Inc. are presently in the process of establishing two more properties near the Oregon border, we can expect to see them around for quite some time in the future."

Since that release developments have come faster than can fully be recounted.

The biggest news was that the induced polarization testing has revealed a nearby body which could be a big, big find.

The body appears some 1,300 feet long, 250 feet wide and 300 feet in depth, according to McTimmonds, and represents a potential ore yield in excess of 11 million tons.

And, according to Mc Timmonds, the only reason the finding was 300 feet in depth is that is all the deeper the survey team was measuring with its instruments.

McTimmonds said Monday exploration and development of the finds at the Brass Ledge

are the next order of business.

Ramp also confirmed a second copper mining exploration is being conducted near O'Brien by a major company. Local sourdoughs and weekend prospectors have long found the richer ores in the area and copper mining at one time was a big thing near Takilma.

In addition, new drilling and exploration has been reported in the Mt. Bolivar copper mining area north of the Rogue near the Coos-Douglas County line; and helicopter searches and surveying has been constant in the Illinois Valley and around Silver Peak near Canyonville.

McTimmonds also indicated early this week the companies are going ahead with exploration near the border south of here and, in conjunction with this, are studying the possibility of establishing a small mill to make sheet copper.

However, take 11 million, multiply it by whatever assay figure you want between one and 10 per cent, and multiply that again by a copper price today of over 60 cents a pound, and you can figure out how much money is involved here.

Len Ramp, state geologist here, is cautious about the Brass Ledge, which was originally worked by Al Love in 1916, and another man in 1959, noting the proof of the venture lies in the report which is overdue from American Smelting on the 117 tons of ore sent there.

This, he said, should give a strong indication of whether there is enough copper in the overall project to meet the hopes and expectations of McTimmonds.

Ramp also noted the induced polarization indicates only that there is some type of conductive ore in a body, not what type of ore.

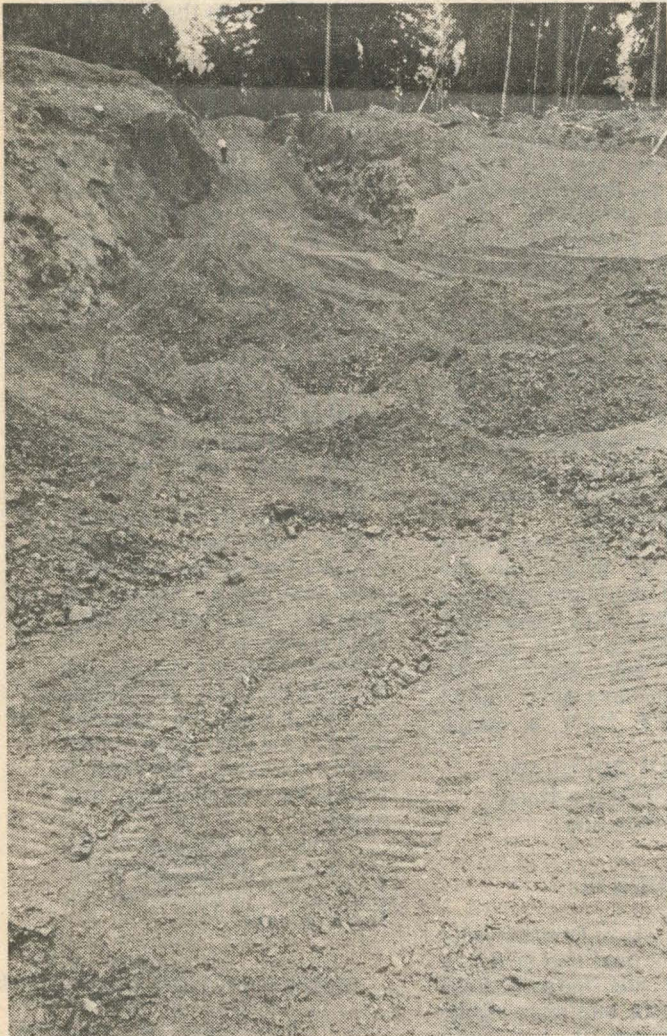
McTimmonds also gave assurances that the Brass Ledge Mine is screened from public view and was in operation long before the current restrictive meausres went into effect.

Love, when he operated it in 1916, reportedly shipped two train car loads of copper from a pit which had an average assay of 18 per cent. The 1959 operator also shipped two car loads, average 5.9 per cent.

Ramp indicated an assay does not necessarily mean profit or loss to an operator, noting that development, overhead, accessibility, transportation, manpower and a variety of other things determine what is a good find.

Anaconda Copper reportedly mines or assaying at less than one per cent in Montana.

The road to the Brass Ledge Mine is blocked by a gate and guarded by Martin Hamlin and a pair of husky hungry



Brass ledge mine for edge of hill to horizon.

Brass Ledge Copper Mine Looking Good

By KEN FRANCIS
Courier News Editor

Prospects of a new venture which could turn this county around to create a fourth major industry are buzzing through mining circles.

The venture is the Brass Ledge Mine on claims in the Galice area which has hit appears to be high grade copper ore in bulk form and has prospects of finding what may turn out to be a small

mountain of the valuable mineral.

Knowledge of the venture spread with the dumping of copper ore on the concrete floor of the burned out Southern Oregon Lumber Supply Co. and was made public by a release from the man who has worked on the project for years.

The release conservatively says: "Cougar Development Corporation of Washington, a wholly-owned subsidiary of Perry River Nickel Mines, Ltd., of Calgary, Canada, and Western American Mining, Inc., a locally-owned mining company owned by Steve McTimmonds and Betty Nelson Realty, are presently enjoying a joint venture on the Brass Ledge Copper Mine located in Josephine County, Ore.

"The production and exploration are under the leadership of Jerry DePeu, superintendent of mines for Western American.

"Exploration consists of extensive bulldozer cuts, bulk sampling, induced polarization surveying, geochemical sampling and

(Continued on Page 3A)



VIEW FROM TOP — Workmen at Brass Ledge clear digging. Boulder of copper ore in foreground weighed 7.5 tons.

— Brass Ledge photo

Brass
LEDGE
MINE

SIGN marks start of Brass Ledge Mine.