

State Department of Geology and Mineral Industries

702 Woodlark Building
Portland, Oregon

STATUS OF PLACER OPERATIONS FOR 1947-1948 SEASON

GALICE MINING DISTRICT

JOSEPHINE COUNTY

<u>Name</u>	<u>Location</u>	<u>Remarks</u>
CONLEY PLACER Cecil Conley East D Street Grants Pass, Ore.	On Galice Cr. approx. 2½ miles above the mouth. Sec. 2, T35S., R8W.	Hydraulic- 2 giants. At present are laying line and clearing with a bulldozer. Expect to be operating before end of December.
LEWIS PLACER Bud Lewis Galice, Ore.	Vicinity of Galice. Sec. 36, T34S., R8W.	Hydraulic-2 giants. reported to be operating.
Bert Pankey Merlin, Ore.	Approx. 3 miles above the mouth of Galice Creek. Sec. 10, T35S., R8W.	Hydraulic- 1 giant. will be in limited operation this season. This placer has not been operated during the past 4 years.
HIGH CHANNEL PL.	Sec. 35, T34S., R8W.	Sniping reported.
YOKUM MINE C. W. Gray Wolf Creek, Ore.	Lower Grave Cr. Sec. 2, T34S., R7W.	Hydraulic- 1 giant. will be operati within a few days.

Harold D. Wolfe

December 17, 1947

R.10 W. 50'

R.9 W.

40'

R.8 W.

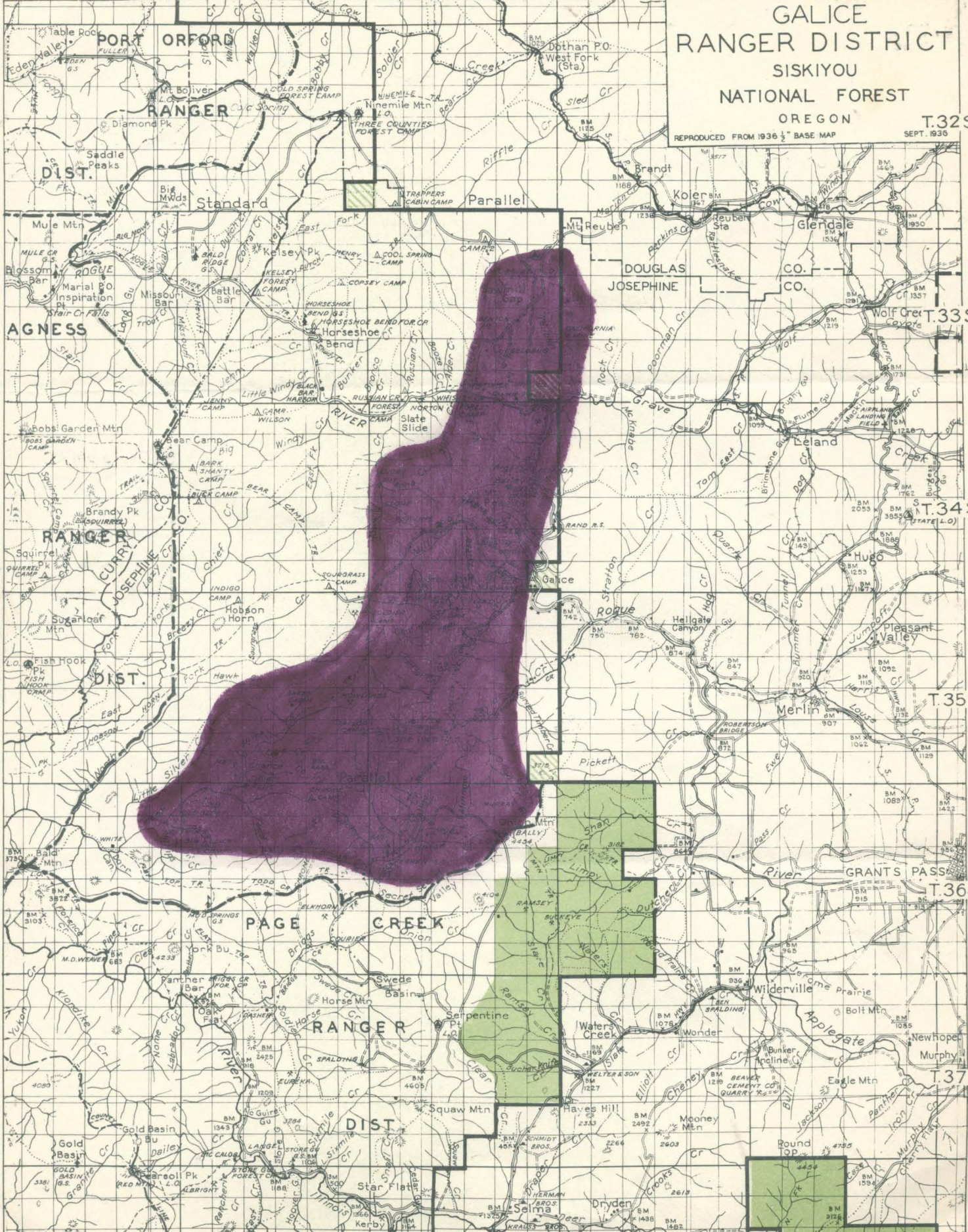
R.7 W.

R.6 W.


GALICE
 RANGER DISTRICT
 SISKIYOU
 NATIONAL FOREST
 OREGON

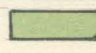
T.32 S.

REPRODUCED FROM 1936 1/2" BASE MAP SEPT. 1936



Cooperative Areas

 Protected by Forest Service

 Protected by State