



THE LAND tilts one way, buildings another, trees a third.



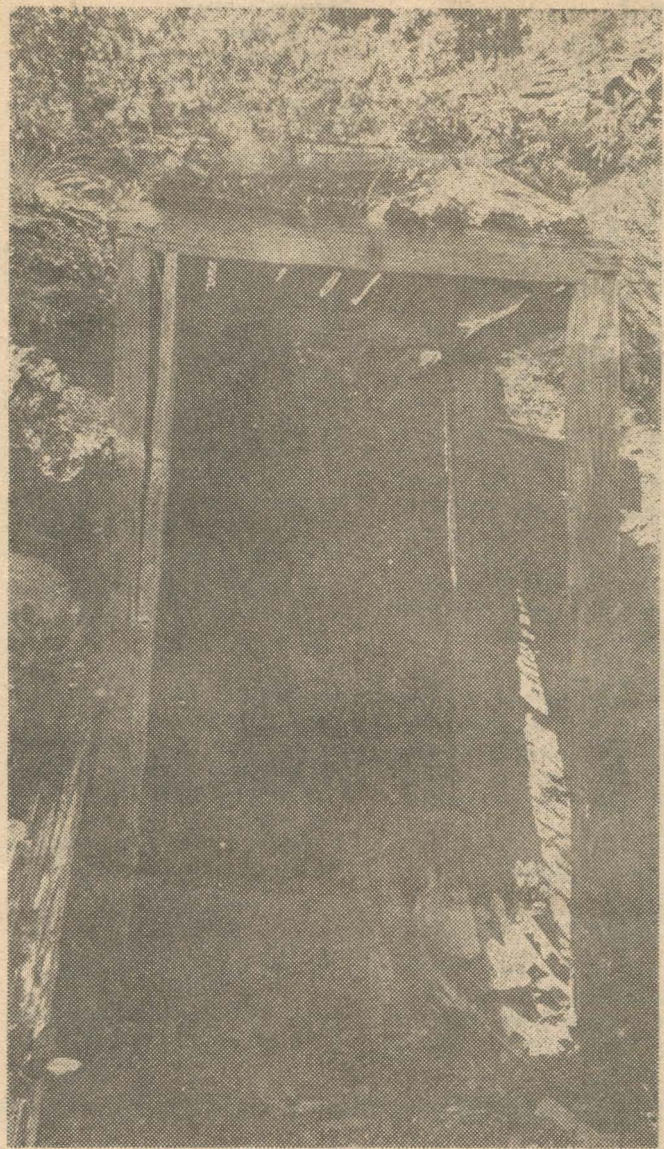
**TUMBLE DOWN** shack, much of it hand-made, is where the miner lived. Below, the mill minus its machinery but still with separating boxes and storage units. Much of the

wood beams were hand-hewn from nearby trees, cut with an axe and smoothed with some with some type of scraper.

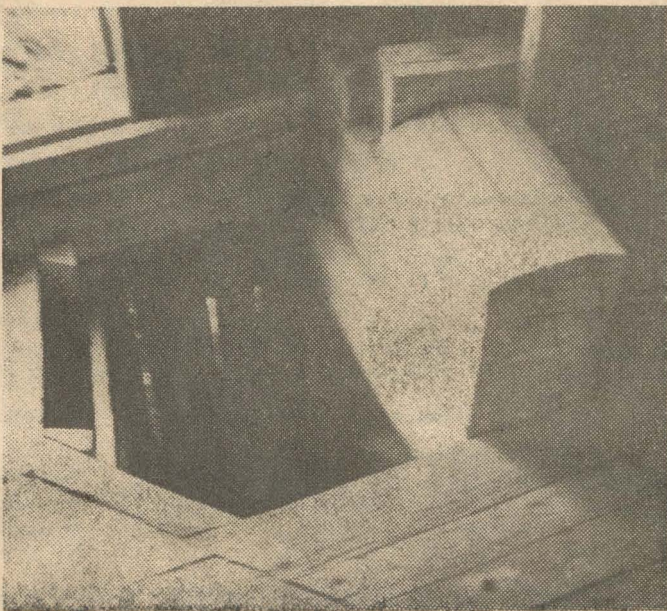
—Courier photos by Ken Francis

uck  
our  
we  
to  
to





**VACANT AND BLANK**, one of what was at one time or the other up to 30 tunnels or slashes, stands caved in on the side of "the saddle" at the 3,800 - foot elevation level. Below, a hand - hewn block in the mill.



# One of Many Abandoned Mines in Area

Scattered around the countryside, in nooks and crannies, atop mountains and plateaus, along creeks, watersheds, gullies and draws are a host of mines.

Such is the Hansen Mine, or the Alta Vista Mine as it was once called.

Only the remains of a small mill, a cabin, a few small storage buildings and caved-in tunnels remain of a mine known to have been in existence in 1932, worked again around World War 2 time and again in the late 1950s.

Geologists here say they doubt, however, it was a paying mine although veins showed traces of gold and copper. The ore was too poor or too small to make it payable.

But then, during the depression, almost any incoming money was better than none.

Hansen's Mine shows up as Alta Vista Mine in U. S. Geological Bulletins back in 1931 and 1932 and reports then were not too encouraging. L. S. Hansen, Grants Pass, was listed as the man then claiming ownership and developing.

The final geological report, in 1959, lists the owner as D. L. Hoffman of The Dales. Again, there was no indication of liveable paydirt.

The mine is located about three miles from Soldier's amp adjacent to Chrome Ridge Road on Hansen Saddle southwest of Galice.