

Bottom of
Wings from No. 3.
Level 39.5' below
No. 3 Elev. 1300.0

02
60
60
1416 1/2

350 FT. LEVEL
— of the —

8

ORIOLE MINE

Josephine Co.
Scale 1 in. to 10 feet.
C.B.Y.

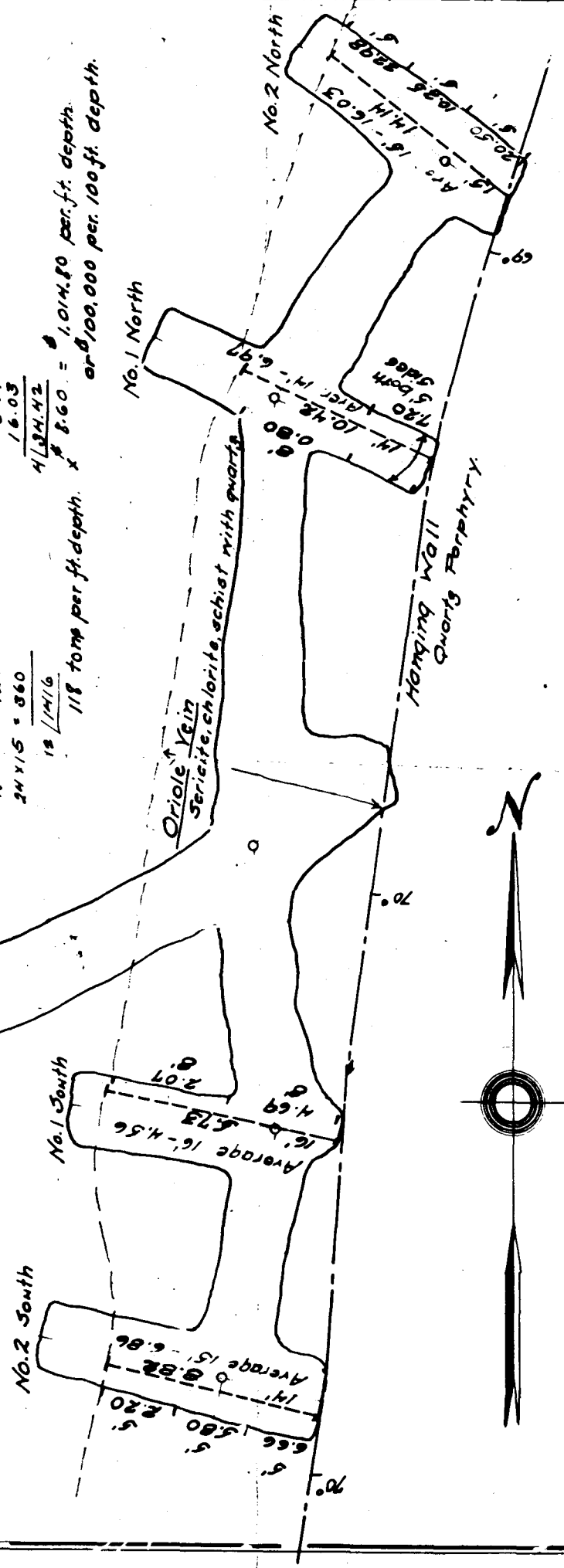
Oregon
Sampled by A.C. Thorne.

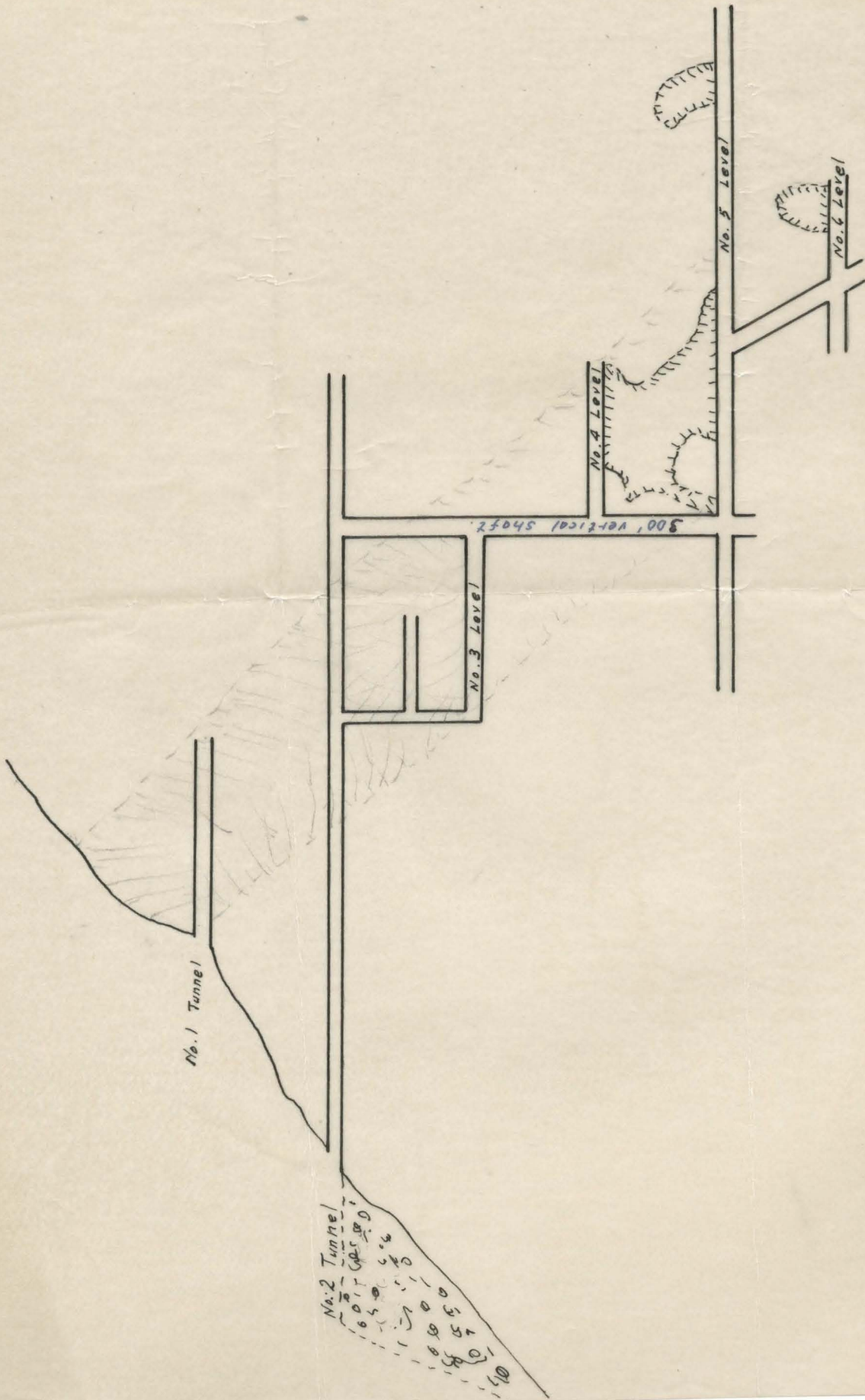
No. 2 South	No. 1 South	No. 1 North	No. 2 North
6.66	4.69	7.20 x 5 = 36.00	20.50
5.80	2.07	0.80 x 8 = 6.40	10.25
2.30	2 6.76	13 42.40	22.95
3 14.56	2.98	8.26	3 53.75
4.89	5.73	10.42 x 14 = 145.88	17.91
8.82	2 9.11	42.40	14.14
2 13.71	4.56	27 188.25	2 32.05
6.86		6.97	16.03

21 x 16 = 336
17 x 15 = 220
24 x 15 = 360
18 | 1416

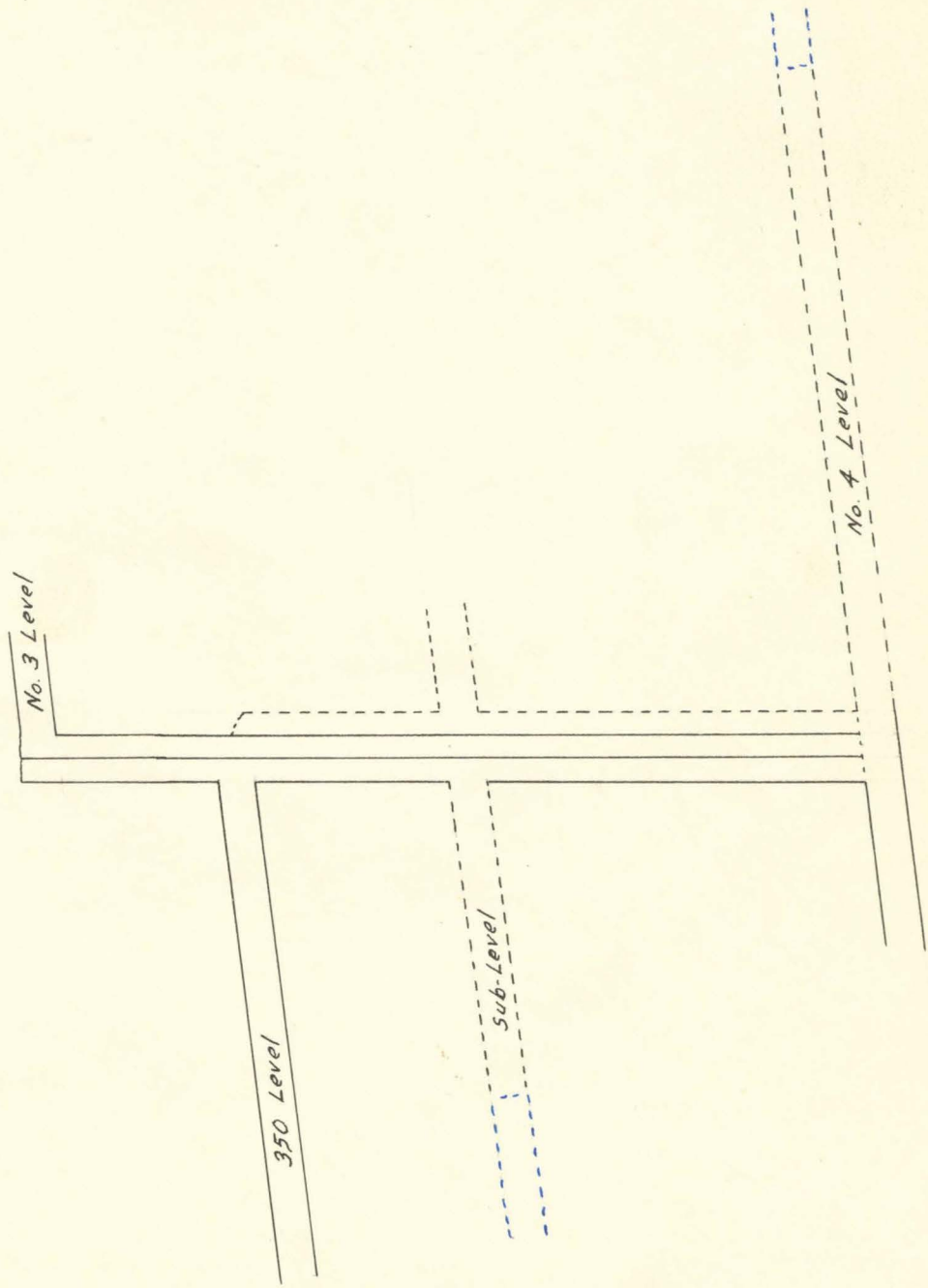
6.86
4.56
6.97
16.03
4 | 34.42

118 tons per ft. depth. x 8.60 = 1,014.80 per ft. depth.
or 8,100,000 per 100 ft. depth.

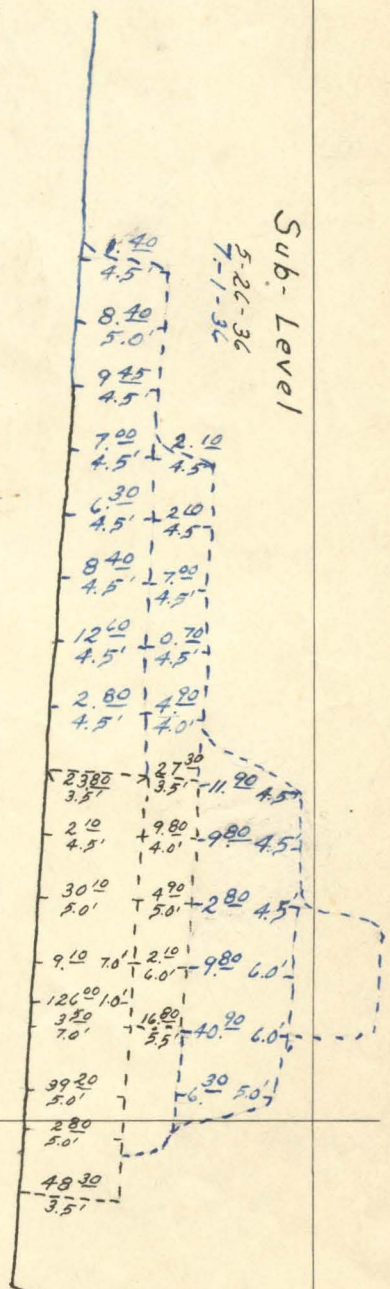
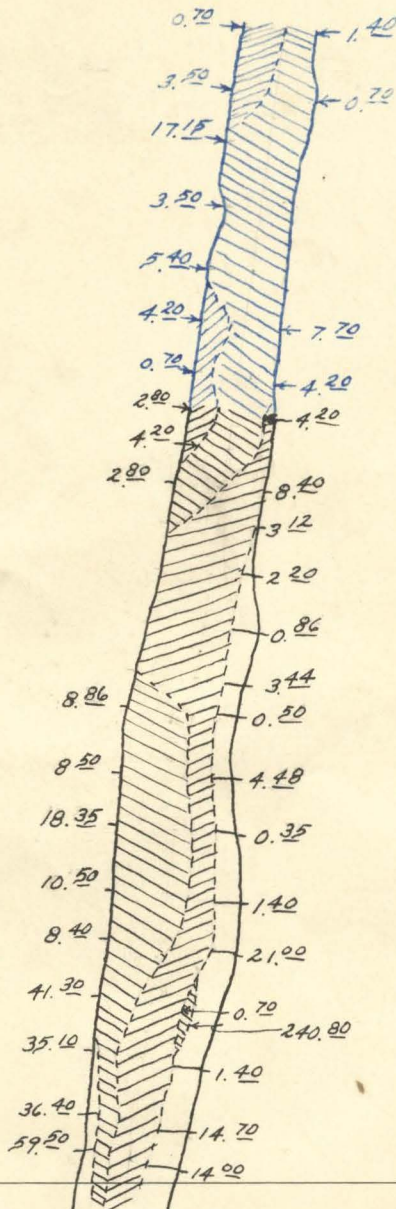




5-26-36
Dotted lines show new development



H AND M DEVELOPMENT COMPANY
GRANTS PASS, OREGON



Sub-Level

5-26-36
7-1-36

Raise