



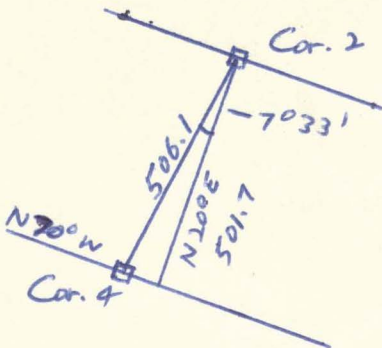
Piper, Jaffray & Hopwood

INCORPORATED

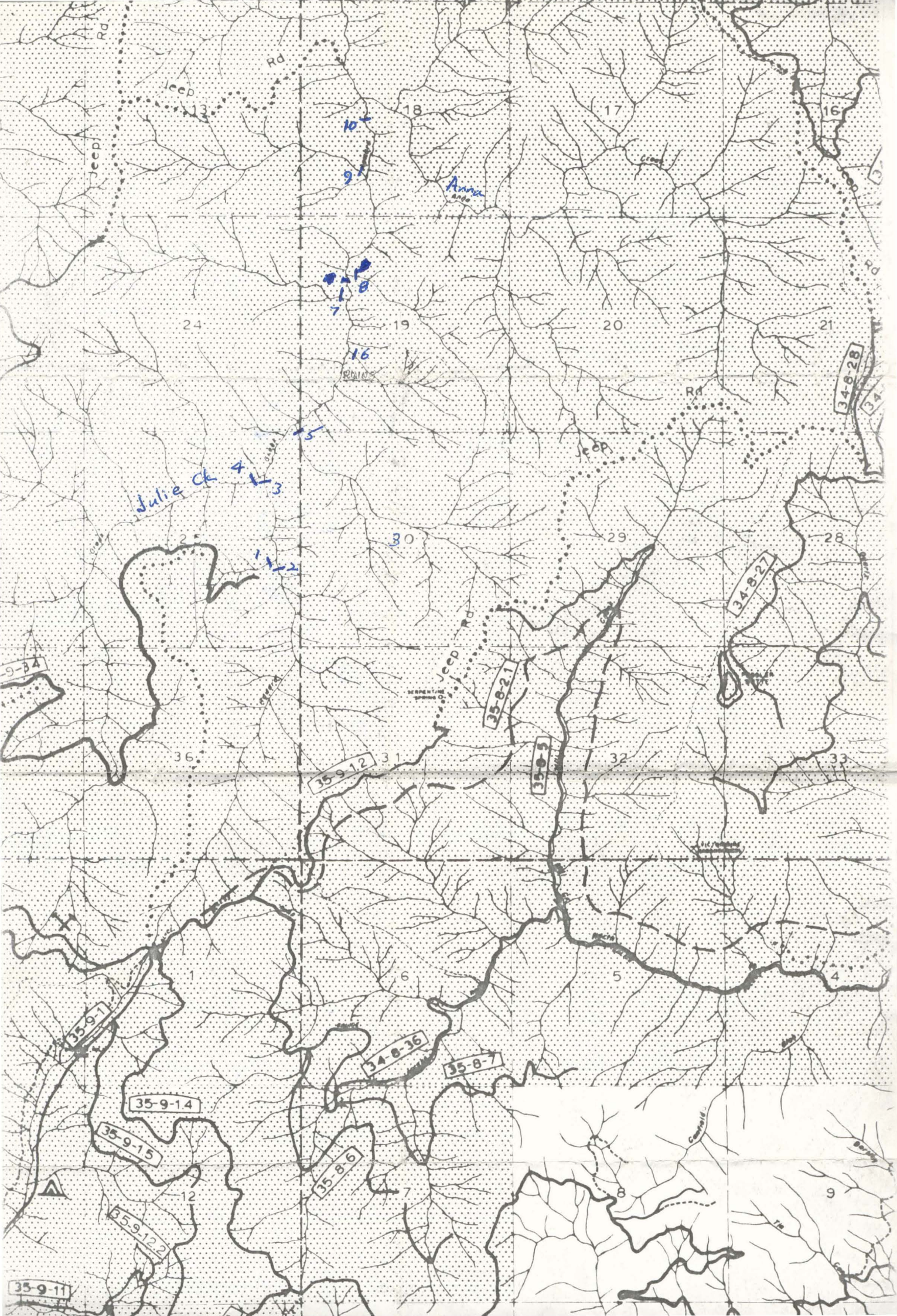
127 East Front Street  
Missoula, Montana 59801

LYNN PARKER  
406/728-2800

$$\begin{array}{r} 27^{\circ} 33' \\ - 20^{\circ} 00' \\ \hline 7^{\circ} 33' \end{array}$$



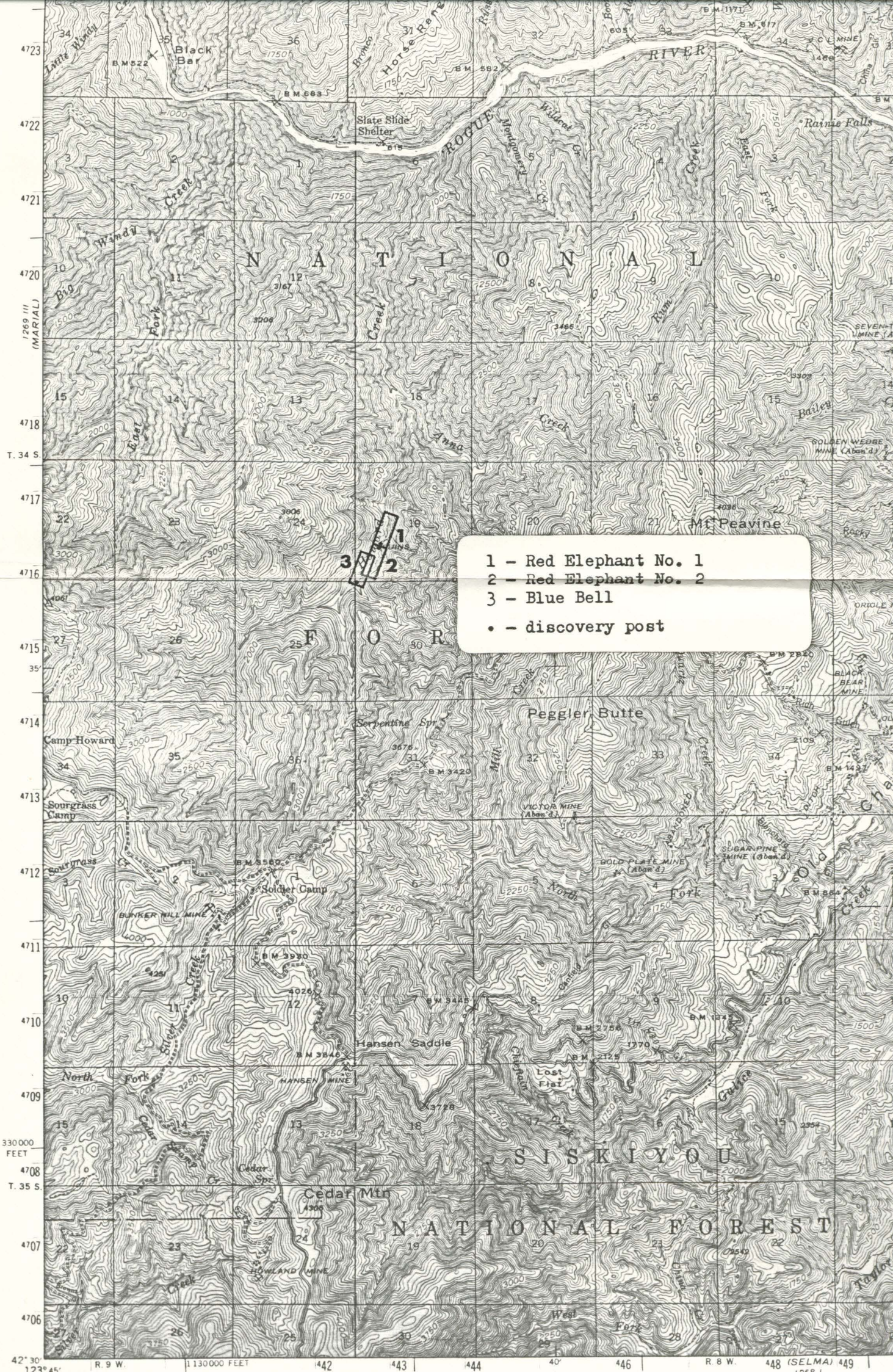
$$\begin{aligned} a &= 506.1 \times \cos 7^{\circ} 33' \\ &= 501.7 \end{aligned}$$

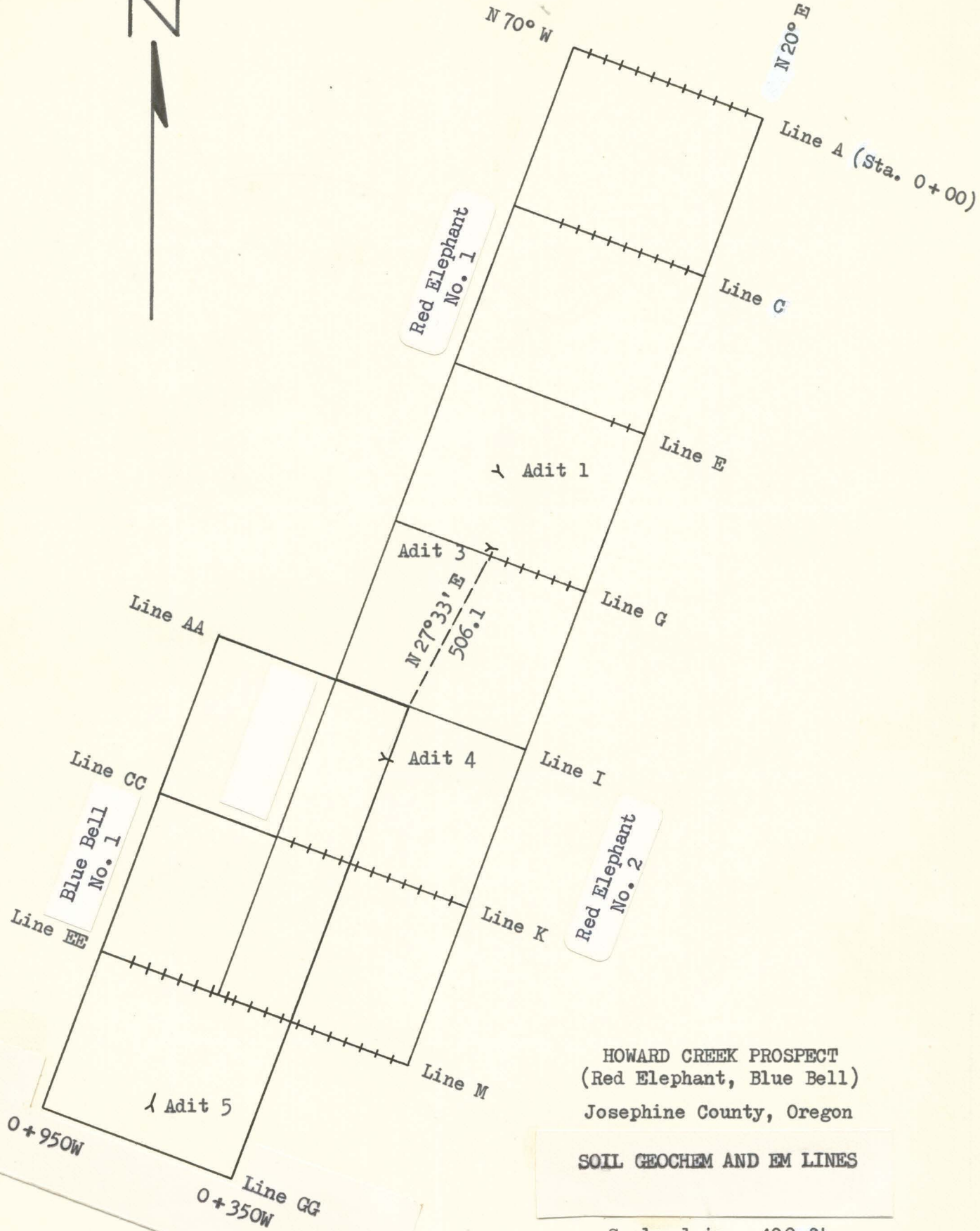


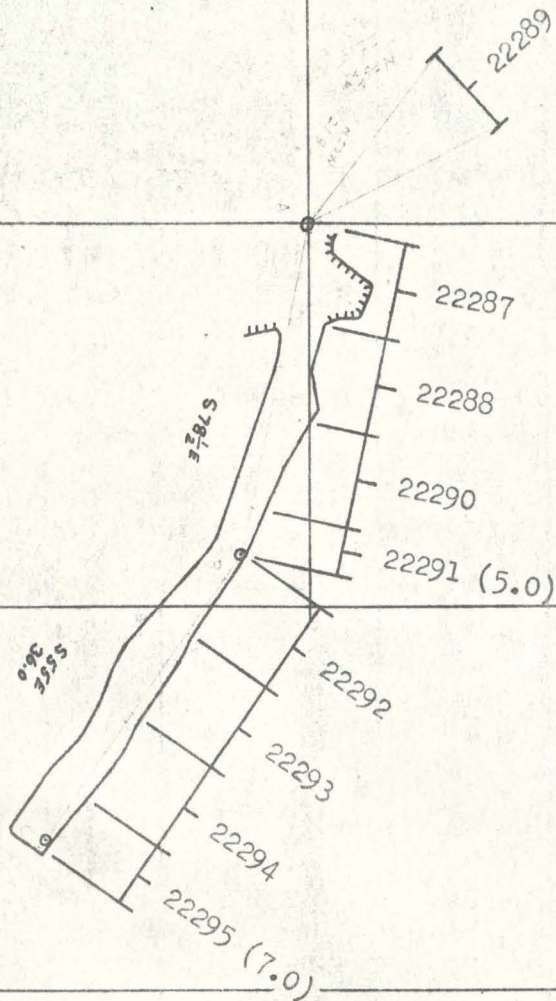


HOWARD CREEK AREA  
Stream sediment samples

Sample No.	Au ppb	Ag ppm	Cu ppm	Mo ppm	Pb ppm	Zn ppm	As ppm	Hg ppb
1	-5	0.3	32	1	13	66	2	100
2	15	0.5	69		14	40	3	170
3	-5	0.5	56		14	48	2	105
4	-5	0.4	31		15	68	5	30
5	-5	0.2	152	1	13	32	2	65
10		1.5	34		17	72	5	25







Sample No.	Au ppb	Ag ppm	Cu ppm	Mo ppm	Pb ppm	Zn ppm	As ppm	Hg ppb	Mo ppm
22287	15	1.5	1220		30	168	15	125	6
22288	15	1.0	1330		40	276	22	430	27
22289	10	1.0	795		24	152	12	125	34
22290	15	1.6	1800		14	166	5	155	41
22291	10	1.2	1750	180	12	236	2	435	190
22292	10	1.1	1080		15	164	12	155	31
22293	10	0.7	1200		13	106	6	110	18
22294	-5	0.8	1120		14	84	2	50	5
22295	-5	0.5	285		13	40	1	35	2

A composite of the above nine samples contained -40 ppb Pt, -2 ppb Pd, and a trace of Sn.

Mo values determined in June, 1976, on pulps retained from 1975, except for No. 22291, which was also run for Mo in '75.

MINE RED ELEPHANT

LEVEL No. 3 ADIT

NOTES BY JCP

SCALE 1" = 30'

DATE \_\_\_\_\_



Location	Sample No.	Au ppb	Ag ppm	Cu ppm	Pb ppm	Zn ppm	As ppm	Hg ppb	Mo ppm
Adit 1 dump	22301	-5	0.3	280	9	14	6	105	12
Adit 4 (10' at portal)	22305	5	0.2	620	9	54	2	425	28

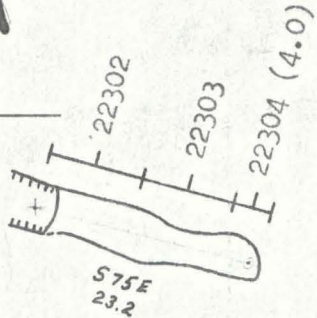
Mo values determined in June, 1976, on pulps retained from 1975.

MINE RED ELEPHANT  
 NOTES BY RCP

SCALE 1" = 200'

LEVEL \_\_\_\_\_  
 DATE 10/17/75

N  
↑



Sample No.	Au ppb	Ag ppm	Cu ppm	Pb ppm	Zn ppm	As ppm	Hg ppb	Mo ppm
22302	5	0.4	550	12	124	20	165	15
22303	5	0.3	390	11	108	10	105	10
22304	-5	0.3	370	13	102	7	90	4

Mo values determined in June, 1976, on pulps retained from 1975.

MINE RED ELEPHANT  
 NOTES BY RCP

SCALE 1" = 20'

LEVEL No. 2 Adit  
 DATE 10/17/75





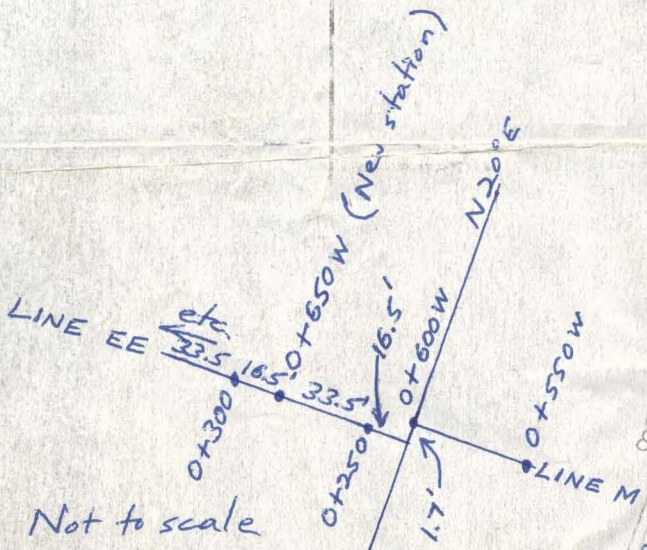
N 70° W

Rock chips

A 200 B

Line A (Sta. 0+50)

MISERY NO. 1



Not to scale

Calculated distances. May be somewhat different in the field

Stations shown in red

MISERY NO. 3

Line RR



Line M Stations shown in green

MISERY NO. 2

Line K

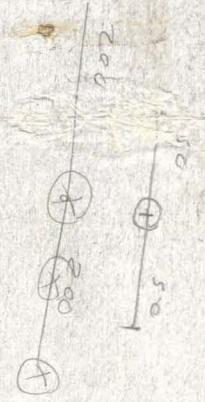
HOWARD CREEK PROSPECT  
(Red Elephant, Blue Bell)  
Josephine County, Oregon

GEOCHEMICAL DATA

ppm Cu

Scale: 1 in. = 400 ft.

350  
300  
60  
0.5



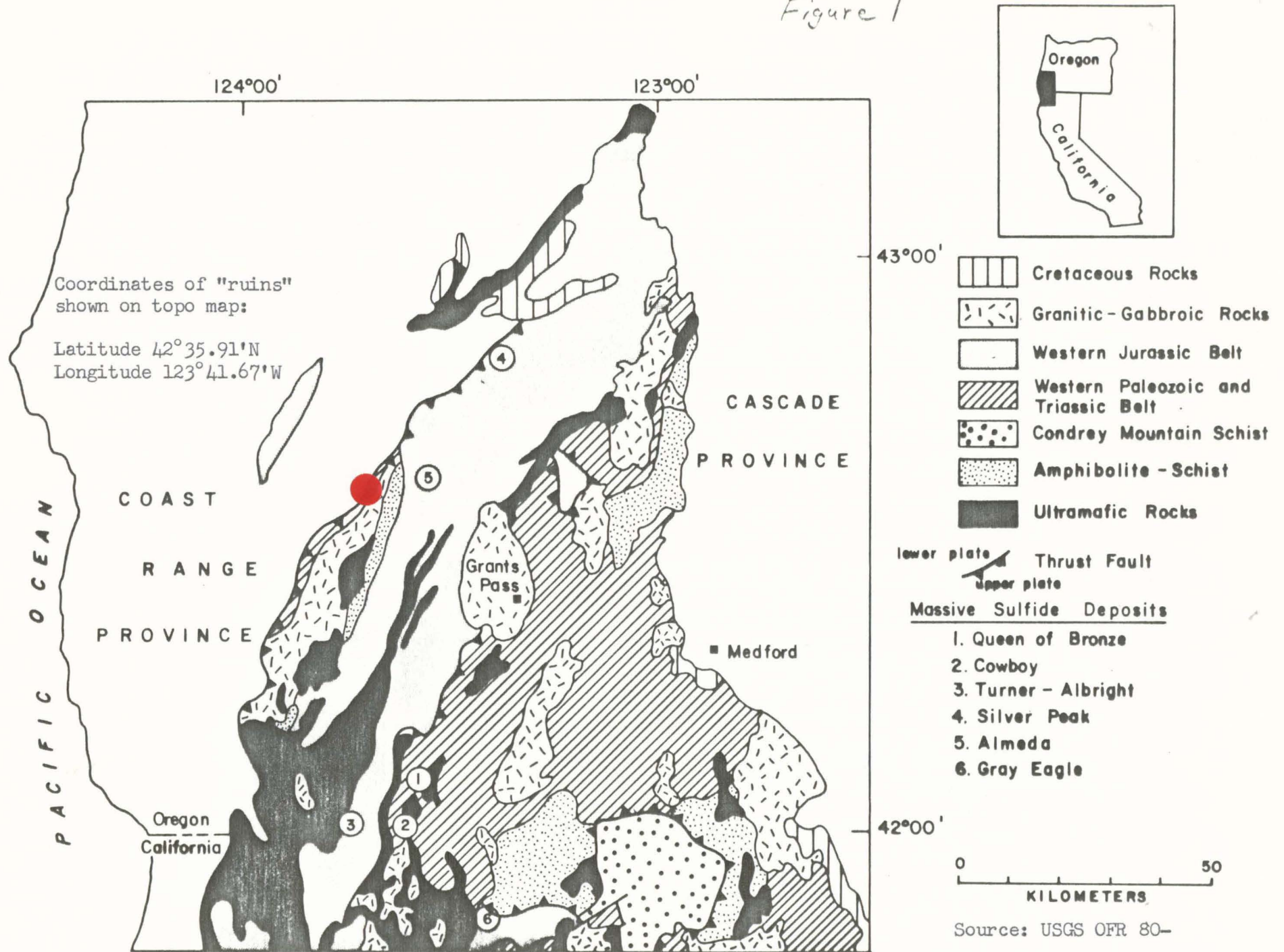
Line FF

Line GG

0.5

(Sta. 0+00)

Figure 1



Source: USGS OFR 80-  
 R.A. Koski