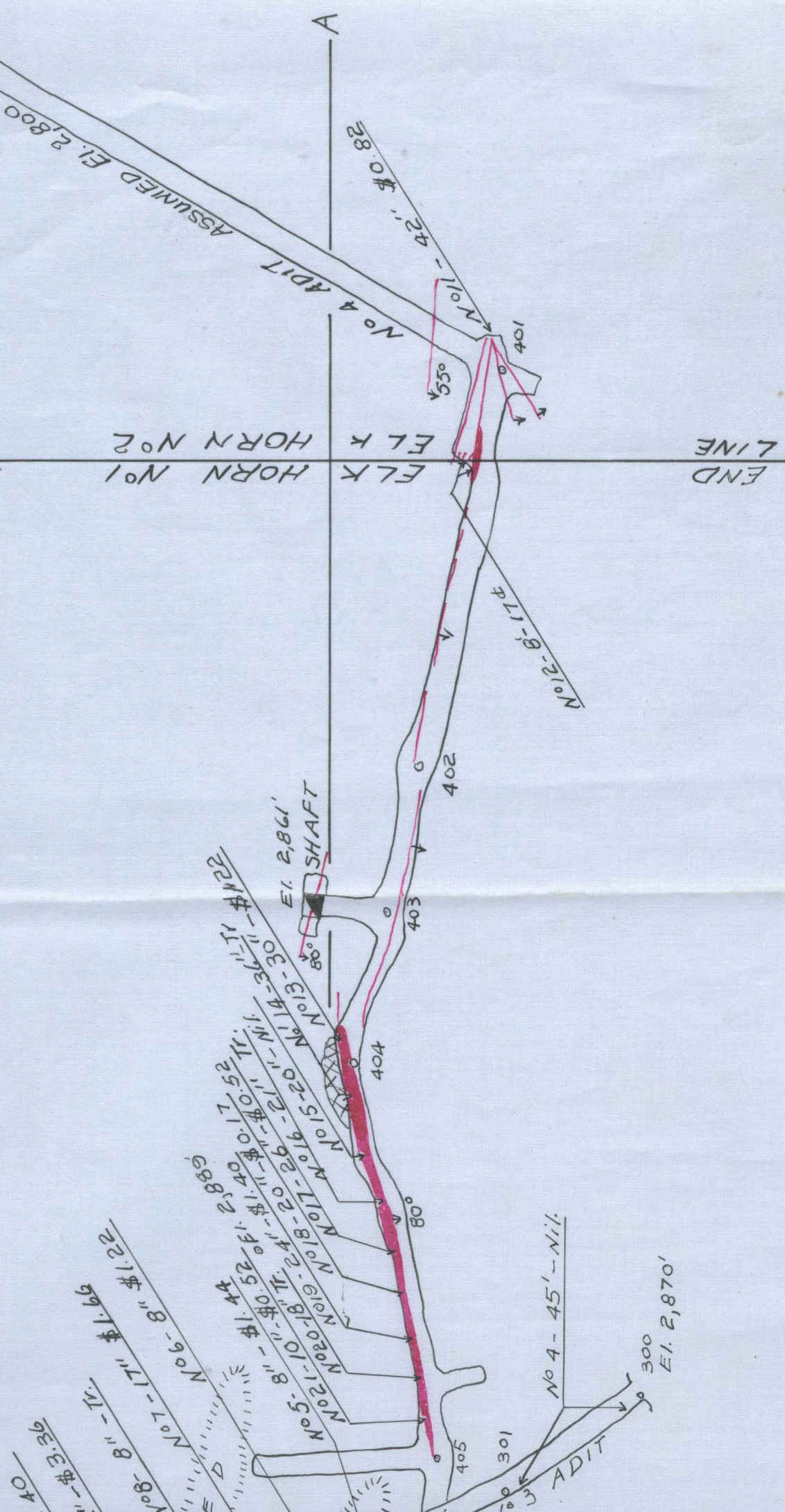
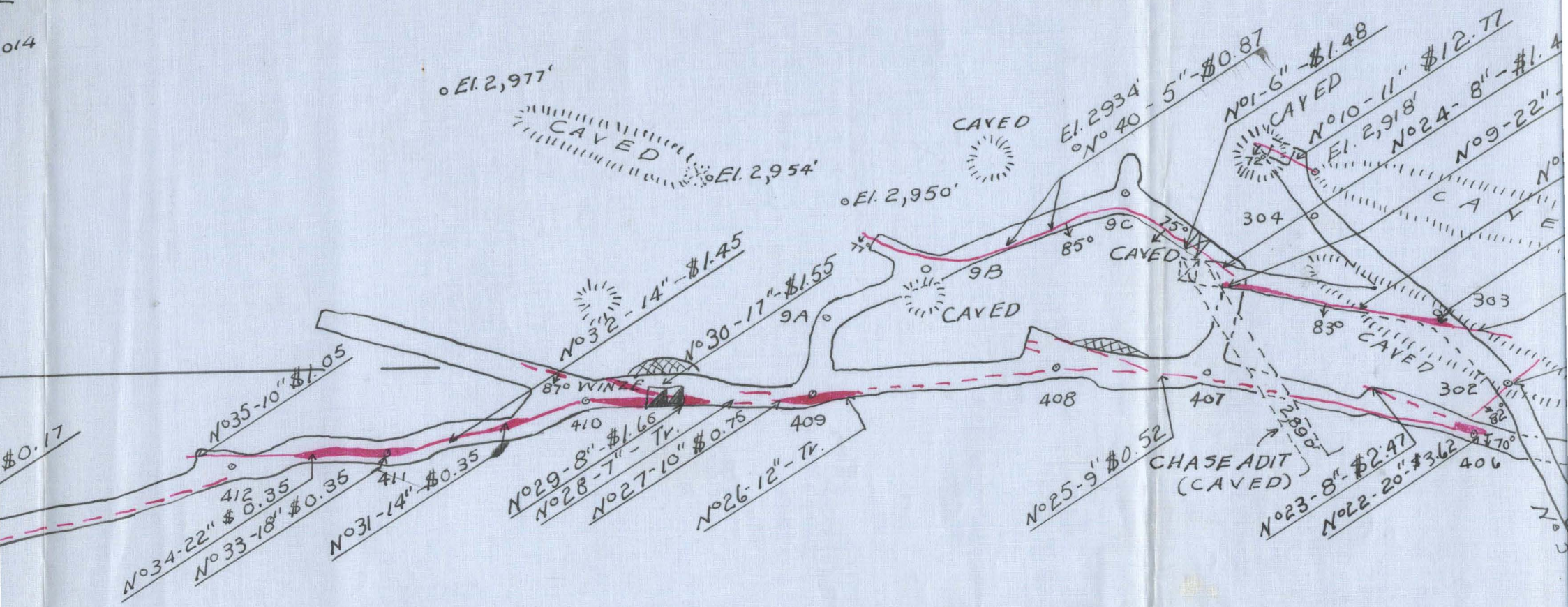


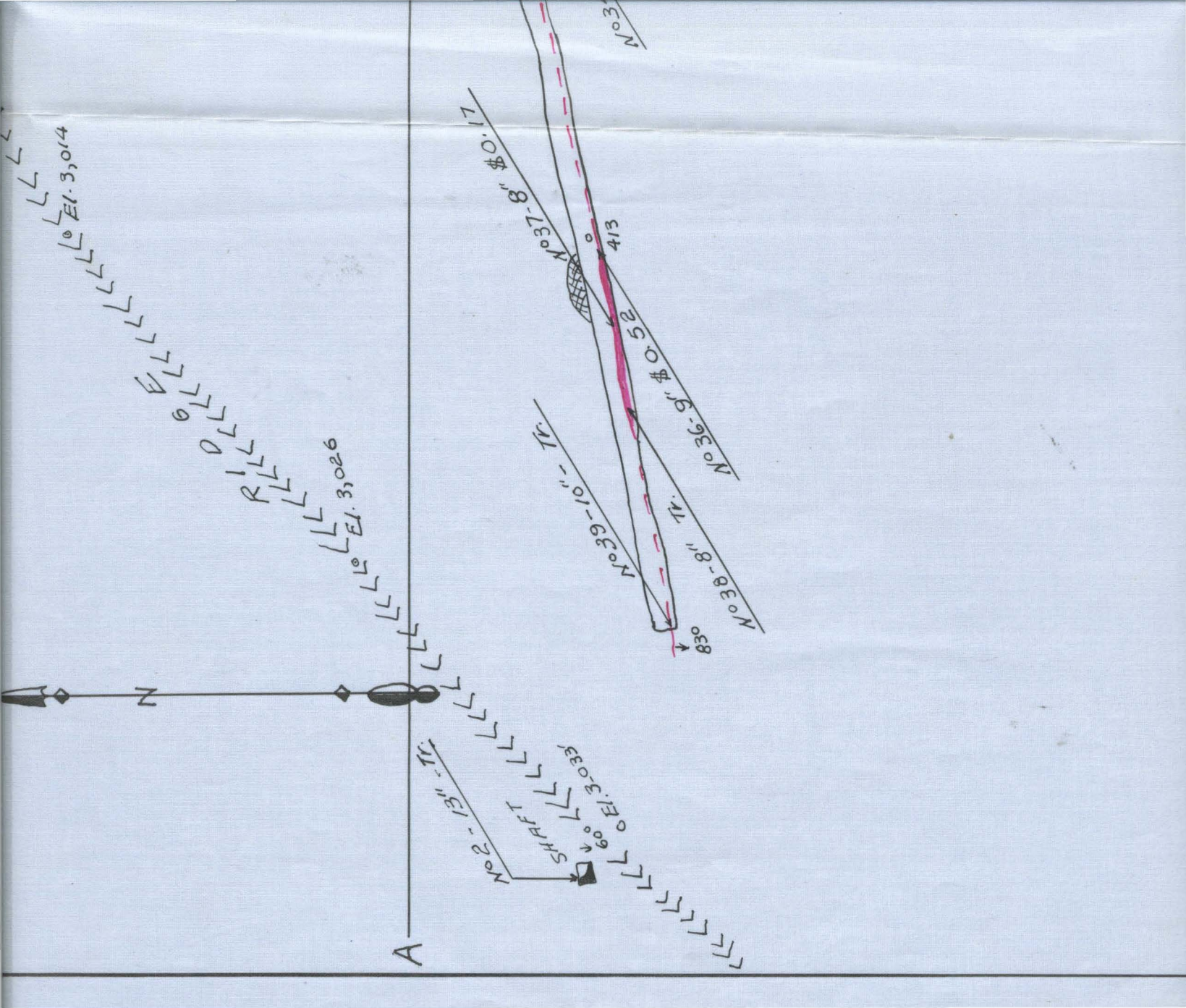
Pump Samples \$1.05 - \$10.26
 0.400



MAP
 OF THE
 ELK HORN MINE



EIK Horn No. 1



60° E. 3,014

SHRIFT

60° E. 3,026

A

No. 2 -- 13" - Tr.

No. 37-8" 8" \$0.17

SHRIFT
60° E. 3,036

No. 36-9" 71" Tr.

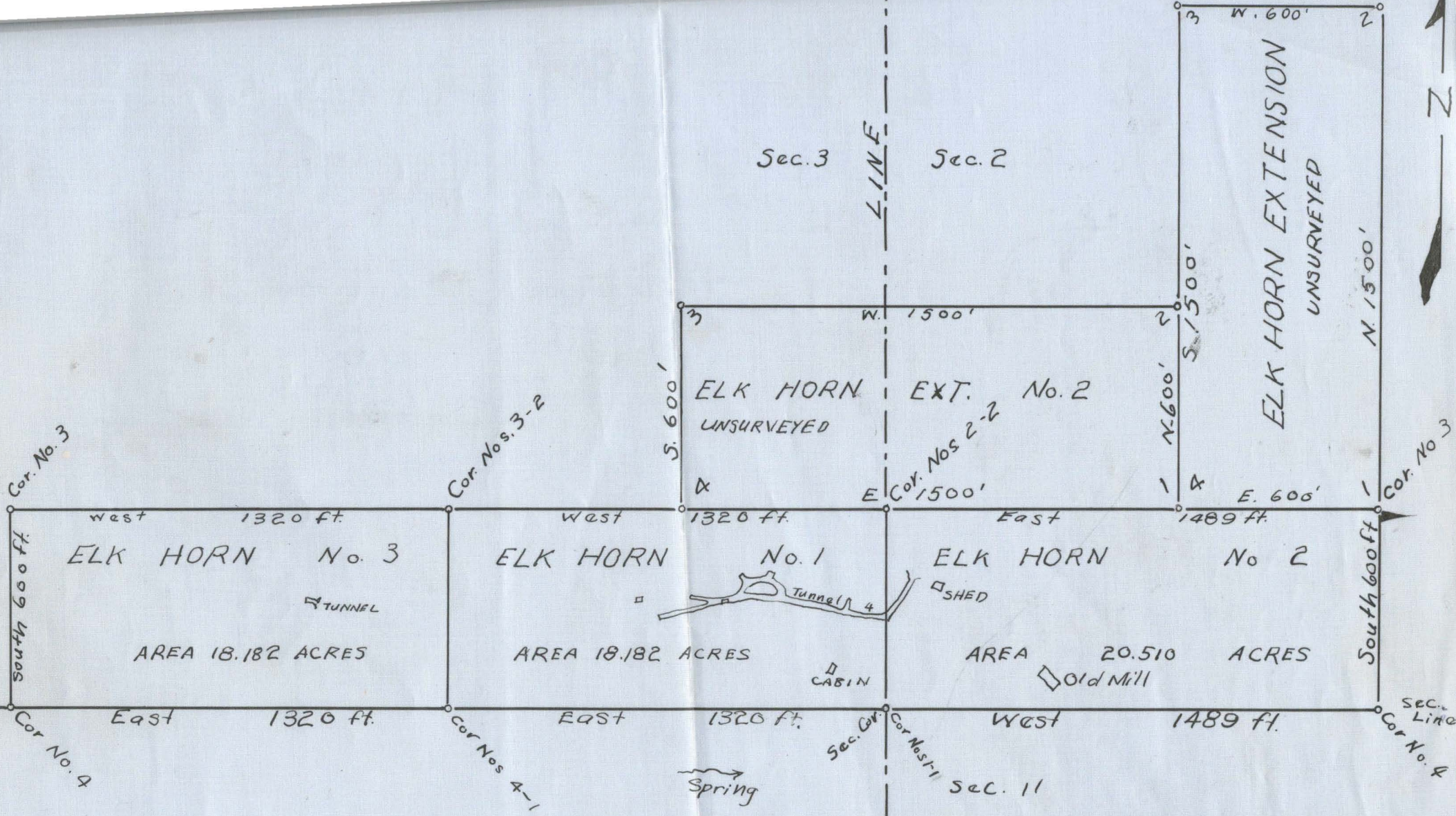
413

No. 38-8" 71" Tr.

No. 36-9" 71" Tr.

838

No. 3



T. 35 S., R. 5 W.

CLAIM MAP
 ELK HORN MINE
 JOSEPHINE COUNTY, ORE.
 COMPILED FROM LOCATION DATA
 ELK HORN Nos. 1, 2 & 3 CLAIMS
 Located in accordance with a survey of
 GOLD DRIFT

Sec. 10

SECTION