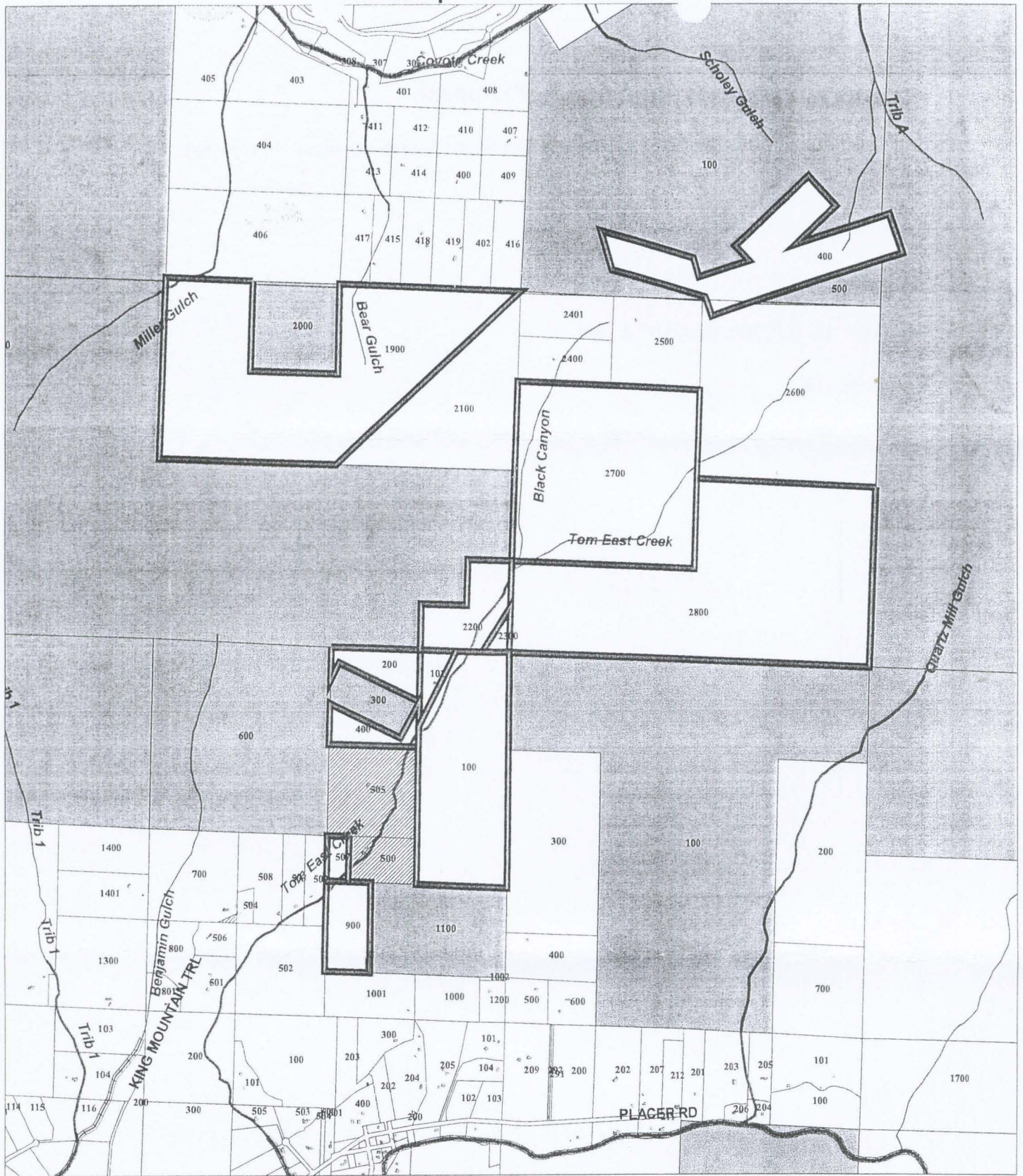


Ownership - Jo. Co. & Private



Legend

Buildings	Extraction Area
PRIMARY Ownership	BLM
SECONDARY Ownership	City
Taxlots	County
Water (line)	Federal
Class 1	Forest Service
Class 2	National Park Service
Wetlands (line)	Private
Wetlands (polygon)	School District
Aggregate Site Impacts	State
Aggregate Site	
Public	

2000 0 2000 4000 Feet



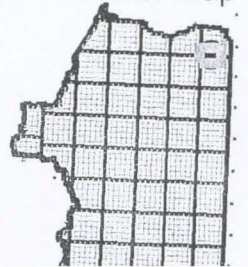
The information on this map is furnished for general interest purposes only. This information is provided without warranties of any kind, express or implied, and it should not be used to support any purchase or other investment. Neither Josephine County, Cave Junction, nor Grants Pass will accept responsibility for any errors or inaccuracies in the depicted information.



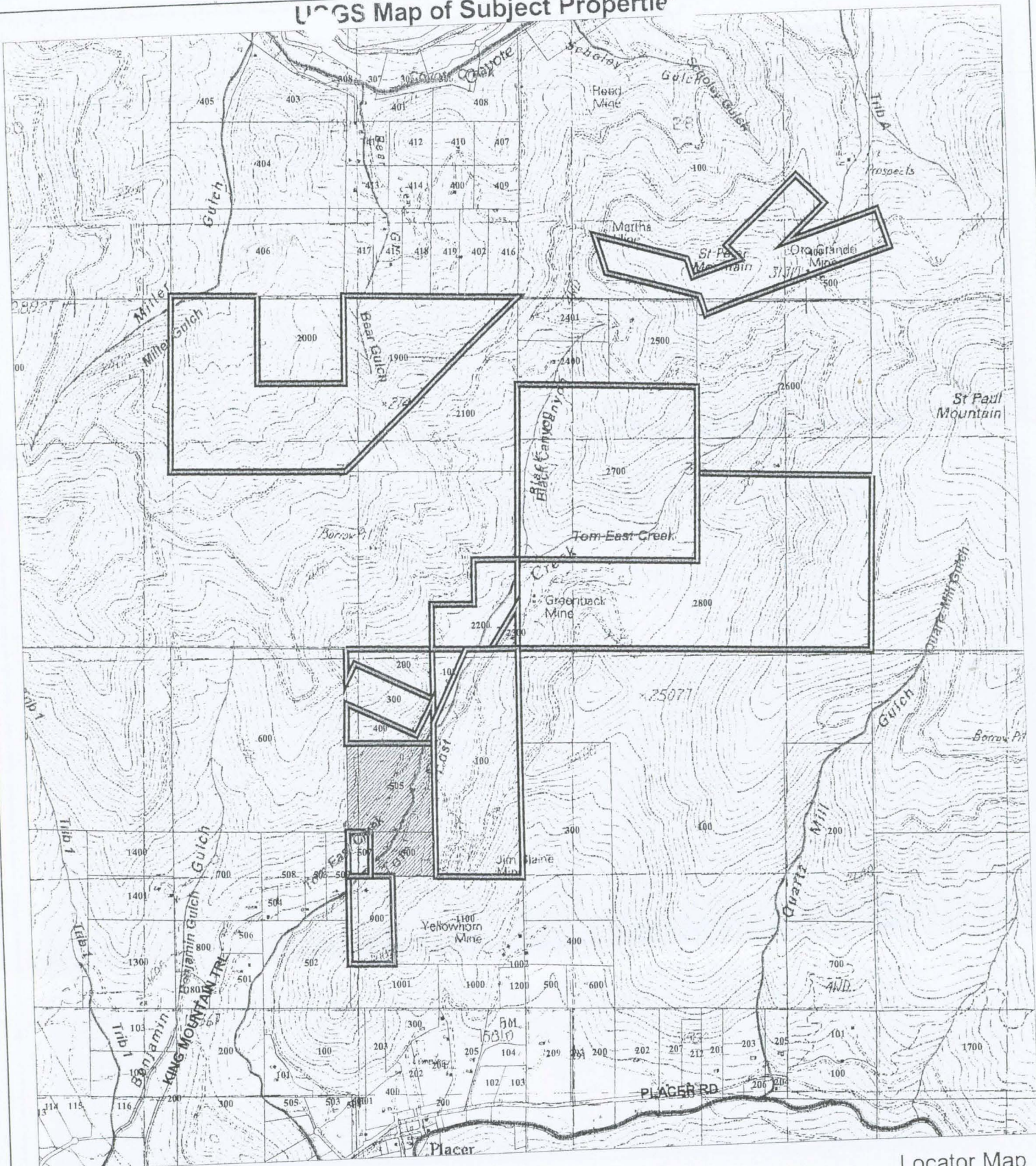
Scale
1:24000



Locator Map



USGS Map of Subject Properties



Legend

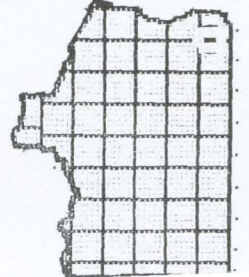
	Buildings		Webands (Line)
	PRIMARY		Webands (polygon)
	SECONDARY		Aggregate Site Impacts
	Tadpoles		Aggregate Site
	Water (line)		Buffer
	Class 1		Extract on Area
	Class 2		USGS 1:24000 Quads



Scale
1:24000

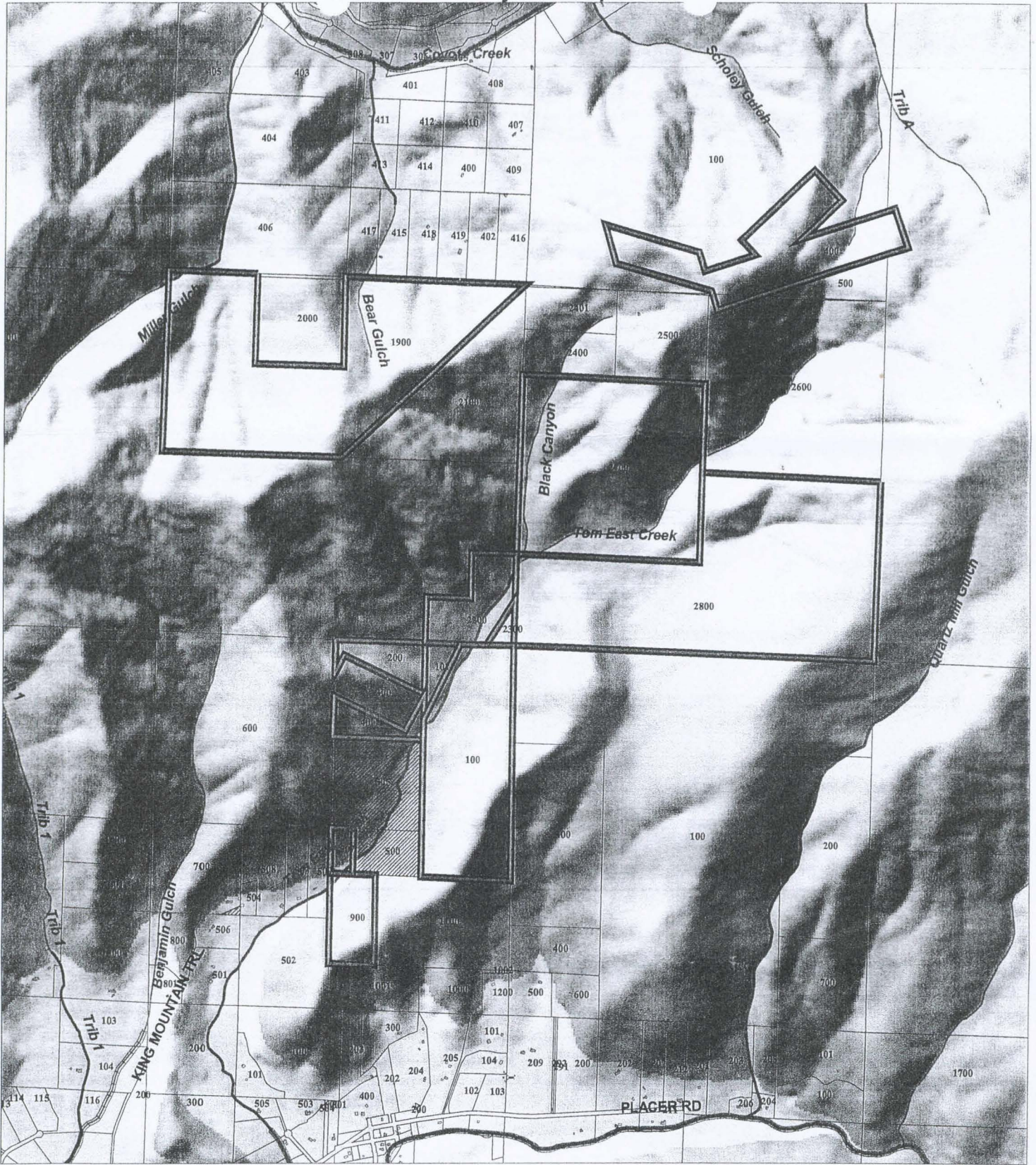


Locator Map



The information on this map is furnished for general interest purposes only. This information is provided without warranties of any kind, express or implied, and it should not be used to support any purchase or other investment. Neither Josephine County, Cave Junction, nor Grants Pass will accept responsibility for any errors or inaccuracies in the depicted information.

Terrain of Subject Properties



Legend

2000 0 2000 4000 Feet

	Buildings		Wetlands (Line)
	PRIMARY		Wetlands (polygon)
	SECONDARY		Aggregate Site Impacts
	Taxlots		Aggregate Site
	Water (line)		Buffer
	Class 1		Extraction Area
	Class 2		Hillshaded Terrain

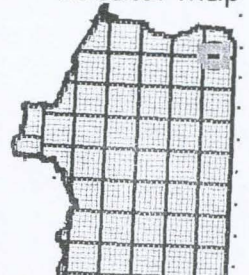
The information on this map is furnished for general interest purposes only. This information is provided without warranties of any kind, express or implied, and it should not be used to support any purchase or other investment. Neither Josephine County, Cave Junction, nor Grants Pass will accept responsibility for any errors or inaccuracies in the depicted information.



Scale
1:24000



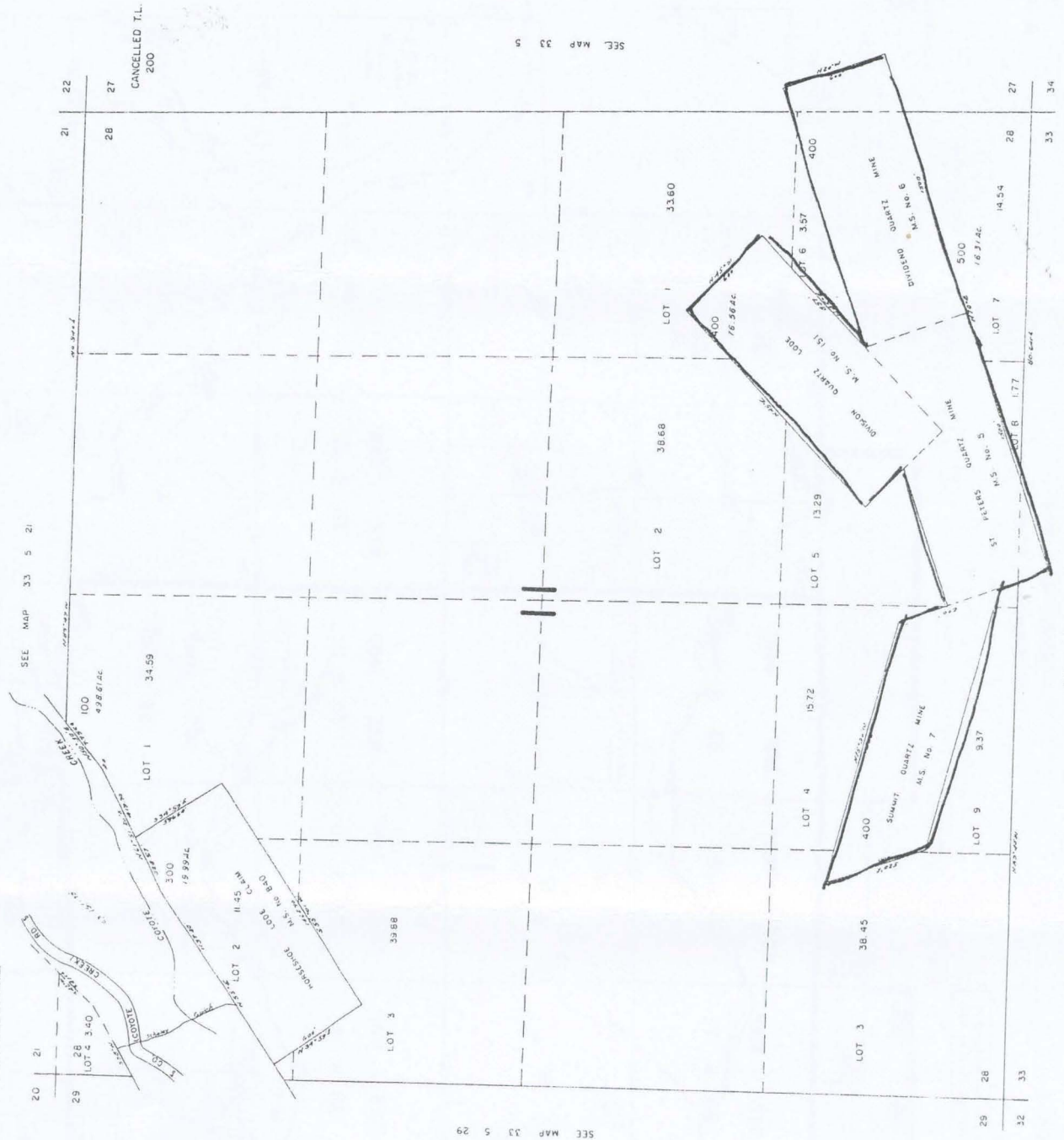
Locator Map



SECTION 28 T.33S. R.5W. W.M.
JOSEPHINE COUNTY

Prepared for
abstract and purposes only.

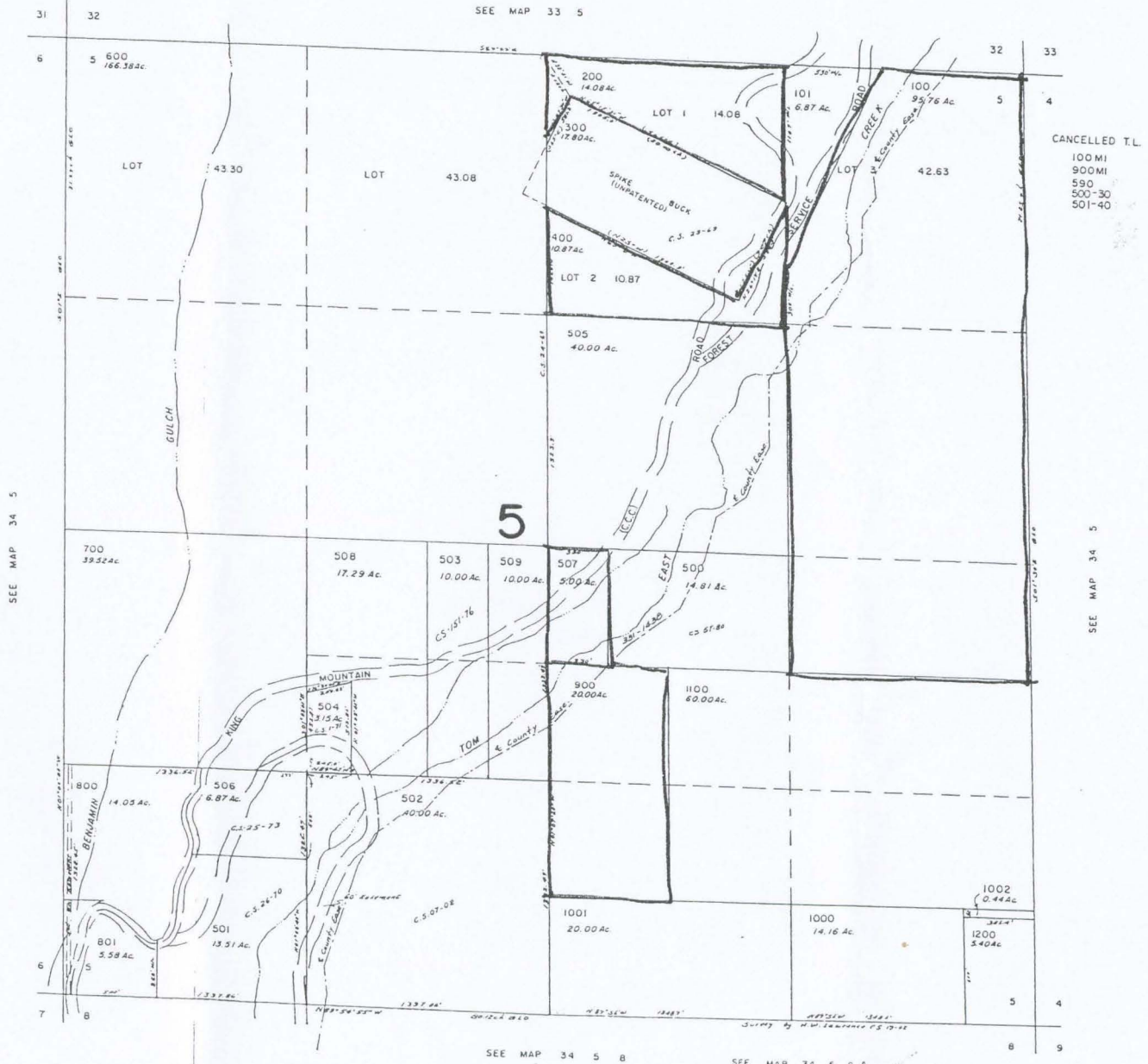
1" = 400'



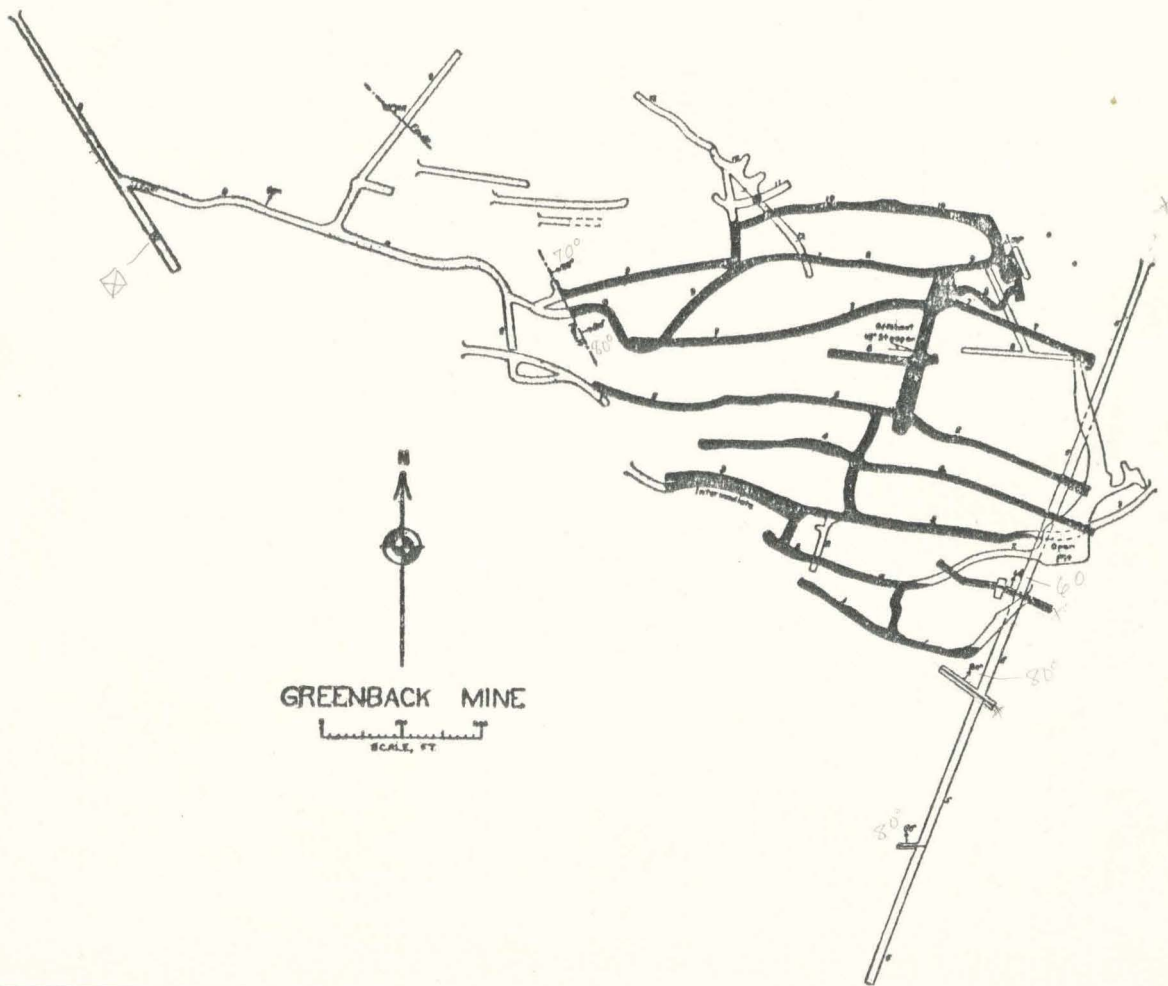
SEE MAP 33 5

SECTION 5 T.34S. R.5W. W.M.
JOSEPHINE COUNTY
1" = 400'

This map was prepared for
assessment purposes only.



CANCELLED T.L.
100 MI
900 MI
590
500-30
501-40



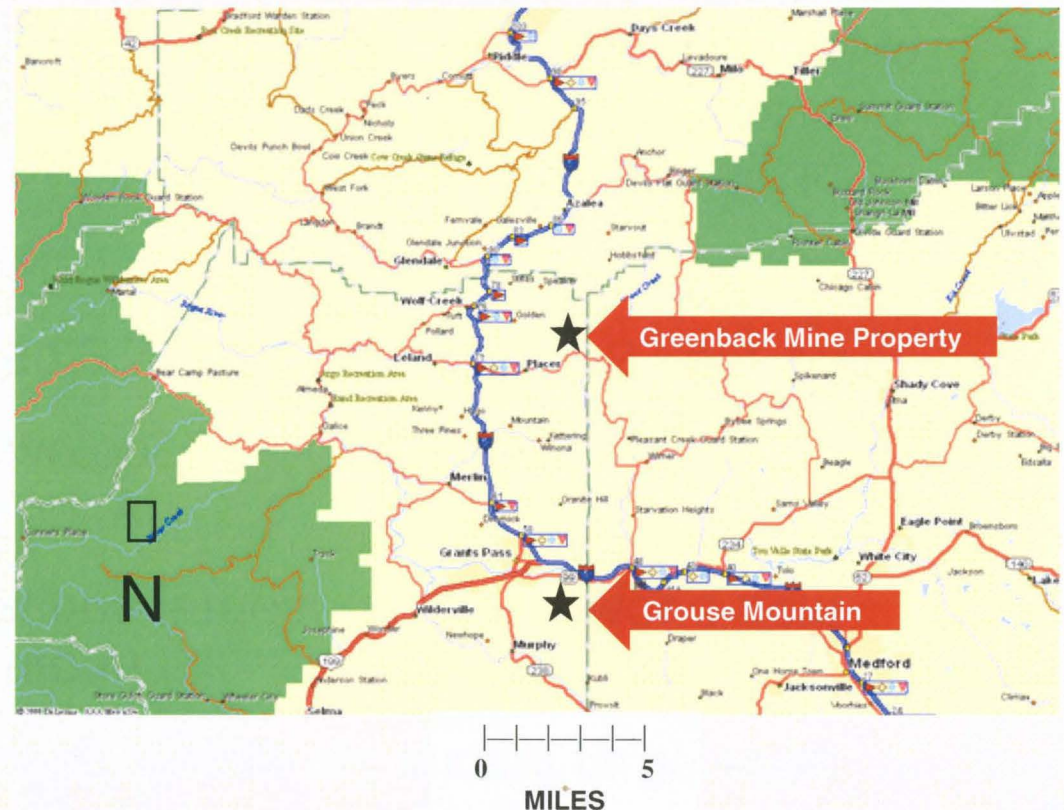
GREENBACK MINE



Land Base

- Greenback Property
 - 100% ownership
 - Over 1,000 acres (approx. 1/3 private lands) with additional contiguous acres pending
 - Includes past producing **Greenback Mine, Jim Blaine Mine and Martha Mine/Saint Peters Group**
- Grouse Mountain
 - 100% ownership
 - Over 360 acres
 - Proximal to Greenback
 - Excellent road access

Josephine County, Oregon



Greenback Property

Greenback Mine

- Historically largest producer (175,000+ oz gold)
- Series of sub-parallel quartz veins
- Historical est. 92,500 tons with 63,645 oz Au, suggesting avg. grade 0.68 oz Au per ton
- 43-101 samples run to 41 g/t and mean of 19 g/t

Martha Mine / St. Peters Group

- High-grade vein deposit w/ additional tonnage potential; possibility of large bulk-mineable pyritic gold deposit in footwall of veins
- Adjacent Cambior 1993 "reserve" est. of 200,000 tons grading 0.46 oz Au per ton

Jim Blaine Mine

- Part of the Greenback Mineral System with additional high-grade vein deposit potential
- Has large bulk-mineable pyritic Au potential in the footwall of its veins

