

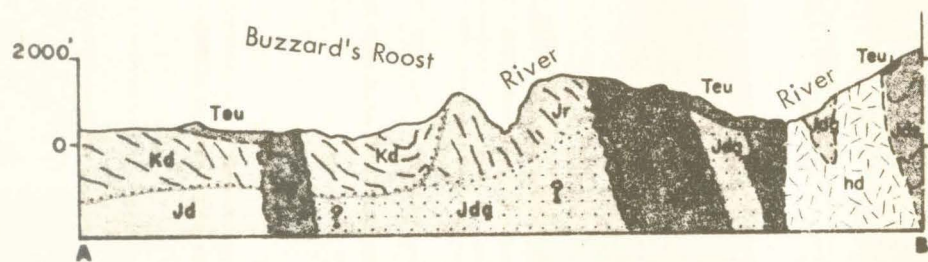
CENOZOIC  
MESOZOIC

- EOCENE { Umpqua Formation: sandstone and conglomerate
- EARLY CRETACEOUS { Kd Days Creek Formation: sandstone, siltstone, and conglomerate
- JURASSIC AND CRETACEOUS {
  - gd Intrusive rocks: serpentine (includes peridotite) sp; olivine gabbro og; hornblende diorite hd; and granodiorite gd.
  - Jr Riddle Formation: siltstone, sandstone, and conglomerate.
- LATE JURASSIC {
  - Jd Dothan Formation: undifferentiated Jd; sandstone and shale Jds; basalt Jdb; altered volcanic rock Jdv; and gneiss (possibly altered from the Dothan Fm.) Jdg.

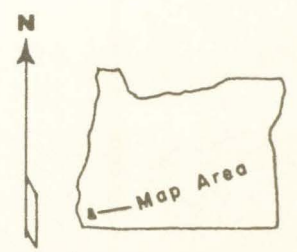
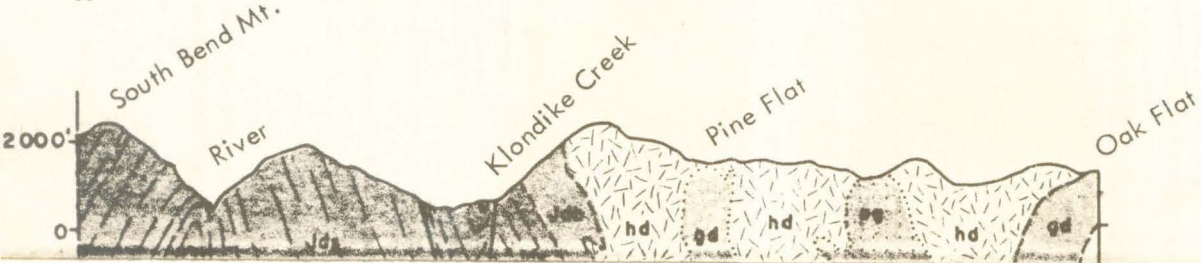
- 70 Strike and dip of beds
- 50 Strike and dip of fault
- Vertical fault
- Axis of anticline showing plunge
- Axis of syncline showing plunge
- Contact dashed where approximate, dotted where inferred.

⊕ GENERALIZED GEOLOGIC SECTIONS

Adapted from: Diller, 1903  
Wells, Hotz, and Cater, 1949  
Wells and Peck, 1961



1 2 3 4 5 miles  
Vertical scale exaggerated 2 1/2 times

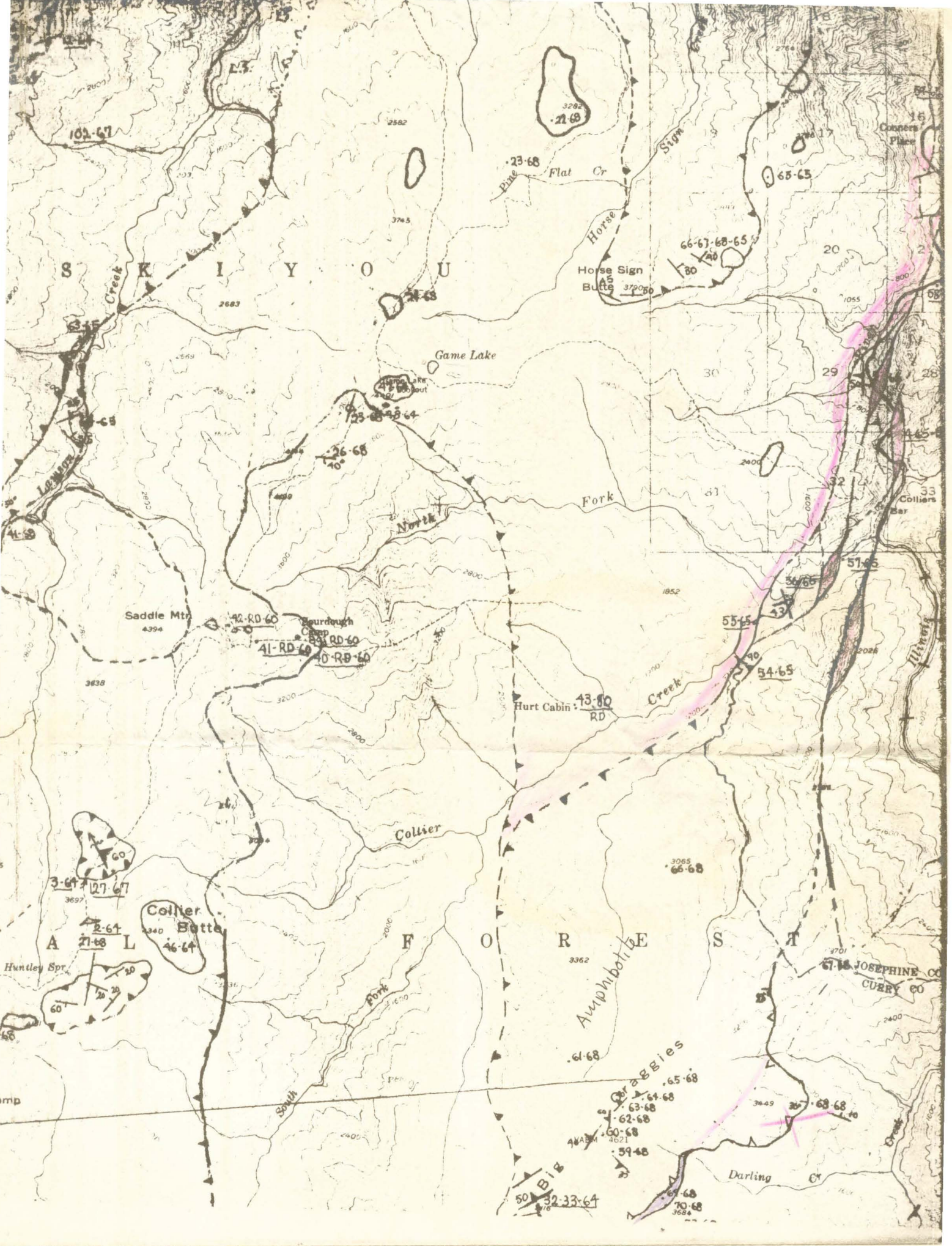






T.36 S.  
T.37 S.





Geol. by Bob Coleman 1969