

Gold Bond Placer

Grants Pass Courier, January 27, 1937

## DEVELOPMENT OF LARGE GOLD BOND PLACERS LISTED

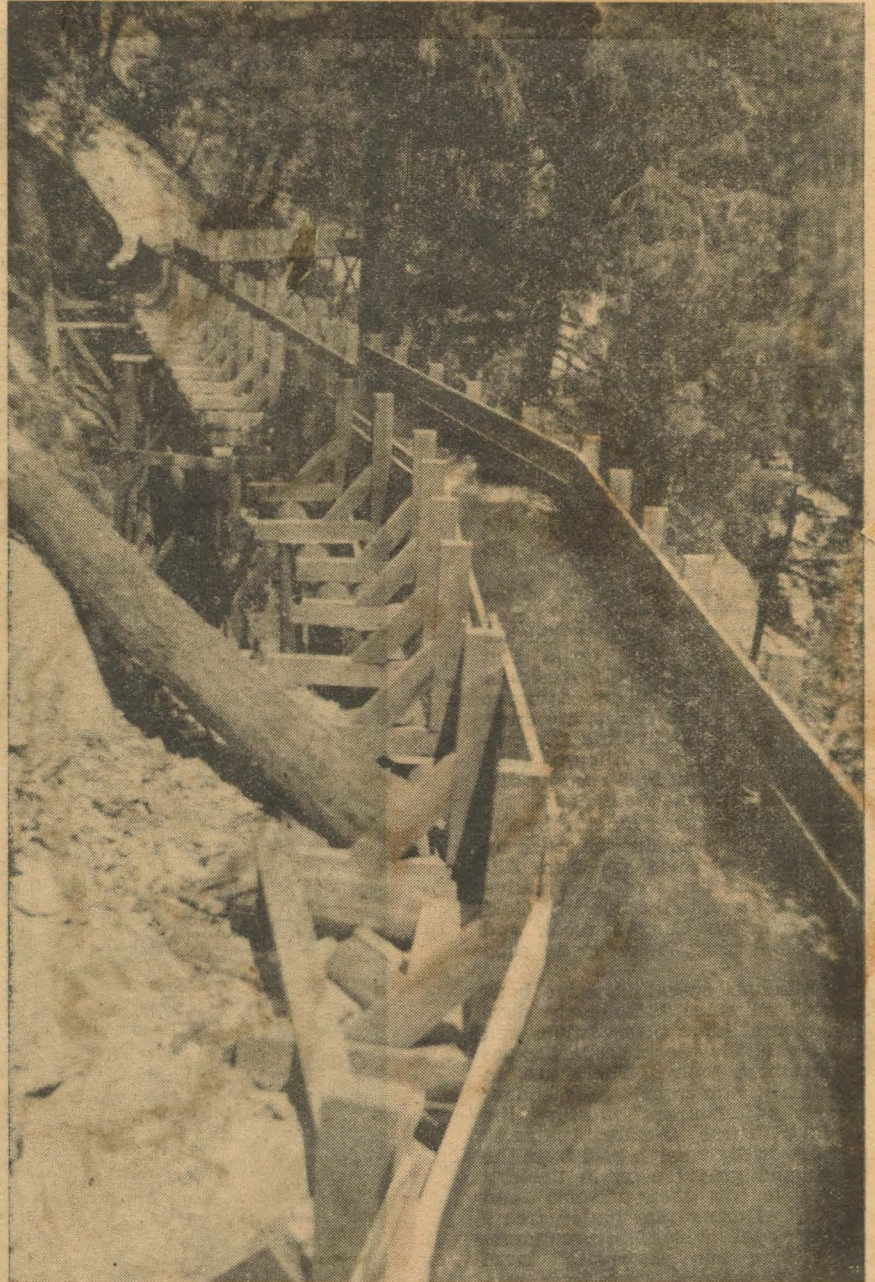
An undertaking that has now reached a stage of major importance among the placer mines of Southern Oregon, is that of the Gold Bond Placers, situated in the Briggs Creek Division of the Illinois River mining district, where approximately 1200 acres of placer ground has been acquired by the corporation together with an appropriation of 50 second feet of water for mining purposes, taken from Soldier creek, a tributary of Briggs.

A large crew of men have been employed on the project during the past three years, in the development and the installation of equipment. The water is conveyed through a canal and flume system a distance of five miles, then by pipe line to site of operation. The pipe-line is 30 inches in diameter, with two branches of 20 inch lines leading to the monitors. It has two number 3 giants with 4 inch nozzles. The head of water developed will furnish 100 pounds pressure at the nozzles with a 24 hour capacity of approximately 3000 cubic yards of gravel delivered to the sluiceways. The lay of the ground offers most ideal situation for disposal of the tailings with unlimited dumping area.

A sum approaching \$80,000 has already been expended in the development and equipping of this the first unit of installation, and extensive improvements are planned for the coming season.

A crew of 16 men are now engaged on the final construction necessary for the commencement of operation on or about the first of February depending of course on the weather condition which so far this season has retarded greatly the regular flow.

The Gold Bond Placers is organized and incorporated under the laws of Oregon with its head office at Grants Pass. J. G. Riggs is president, O. A. Thomas vice-president and general manager.



View of newly constructed flume at Gold Bond Placer, carrying water from the creek to be used in hydraulicking. The rugged country at this point gives the water considerable "fall."

# Mine Asks for Water Permit

*Jan  
1939*

Four years' preparation for extensive placer gold mining operations have been just completed in the Oak Flat area by a company headed by Owen A. Thomas, it was learned this week when the firm filed application for a 50 second foot water permit with County Watermaster Tom R. Pearce.

Mr. Pearce said that a ditch five feet deep, 10 feet wide and three miles long has been dug so as to carry water from Soldiers creek to the source of operations, near the mouth of Briggs creek. It is understood that a sizeable dam has also been constructed.

JAN 27 1937

PAGE FOUR

# Canal Five DEVELOPMENT OF LARGE GOLD BOND PLACERS LISTED

An undertaking that has now reached a stage of major importance among the placer mines of Southern Oregon, is that of the Gold Bond Placers, situated in the Briggs Creek Division of the Illinois River mining district, where approximately 1200 acres of placer ground has been acquired by the corporation together with an appropriation of 50 second feet of water for mining purposes, taken from Soldier creek, a tributary of Briggs.

A large crew of men have been employed on the project during the past three years, in the development and the installation of equipment. The water is conveyed through a canal and flume system a distance of five miles, then by pipe line to site of operation. The pipe-line is 30 inches in diameter, with two branches of 20 inch lines leading to the monitors. It has two number 3 giants with 4 inch nozzles. The head of water developed will furnish 100 pounds pressure at the nozzles with a 24 hour capacity of approximately 3000 cubic yards of gravel delivered to the sluiceways. The lay of the ground offers most ideal situation for disposal of the tailings with unlimited dumping area.

A sum approaching \$80,000 has already been expended in the development and equipping of this the first unit of installation, and extensive improvements are planned for the coming season.

A crew of 16 men are now engaged on the final construction necessary for the commencement of operation on or about the first of February depending of course on the weather condition which so far this season has retarded greatly the regular flow.

The Gold Bond Placers is organized and incorporated under the laws of Oregon with its head office at Grants Pass. J. G. Riggs is president, O. A. Thomas vice-president and general manager.