

US

22

D2,3 = sp 1860

D2,3 = sp 1860

D2,3 = sp 1860

XO
BR

XO

X-74

D2,3 = p 1890

BR

D2,3 = sp 1860

XO

21

G

BR

16

POWELL

D2,3 = p 1890

D2,3 = sp 1860

D5 Scat unnm
D3,2 = 1860

D5 Scat unnm
D3,2 = 1860

XO

D5 Scat unnm
D3,2 = 1860

XO
BR

C

D5 Scat unnm
D3,2 = 1860

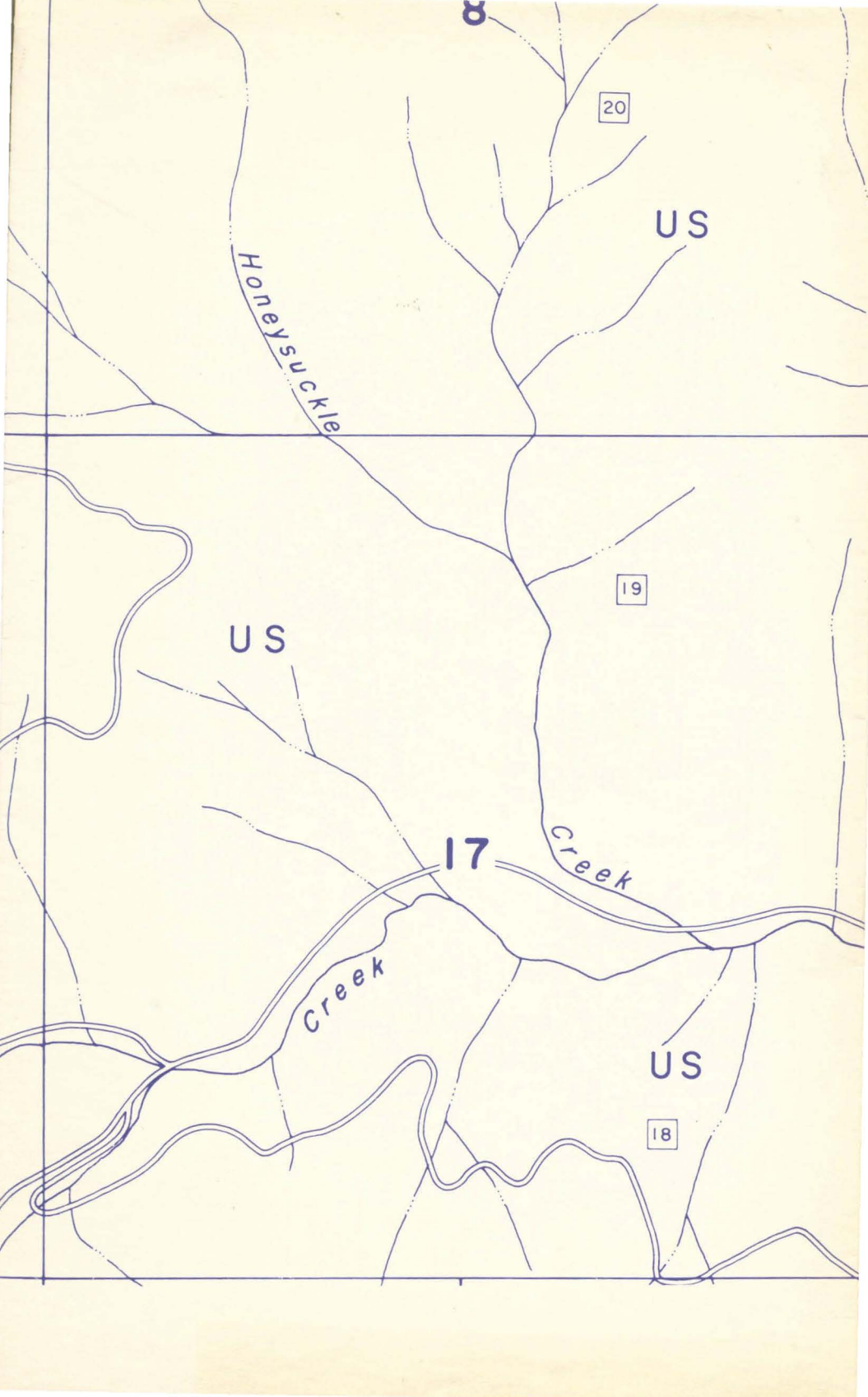
D2,3 = sp 1860

D5 Scat unnm
D3,2 = 1860

XO
BR

D5 Scat unnm
D3,2 = 1860

20



7

US

19

US

WILLOW

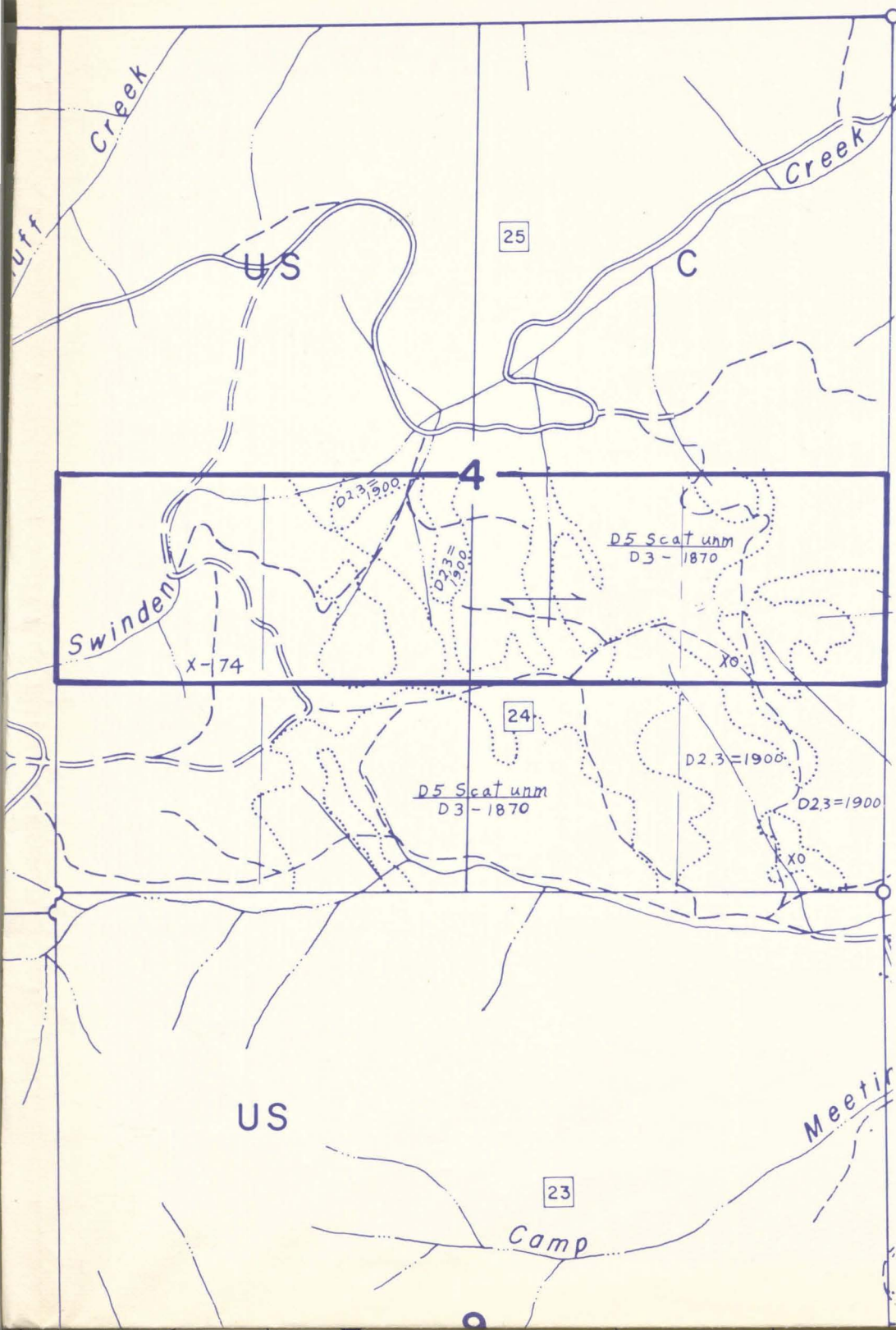
18

18

Creek

US

17



Creek

Creek

25

US

C

4

Swinden

X-74

D5 Scat unm
D3-1870

24

D5 Scat unm
D3-1870

D23=1900

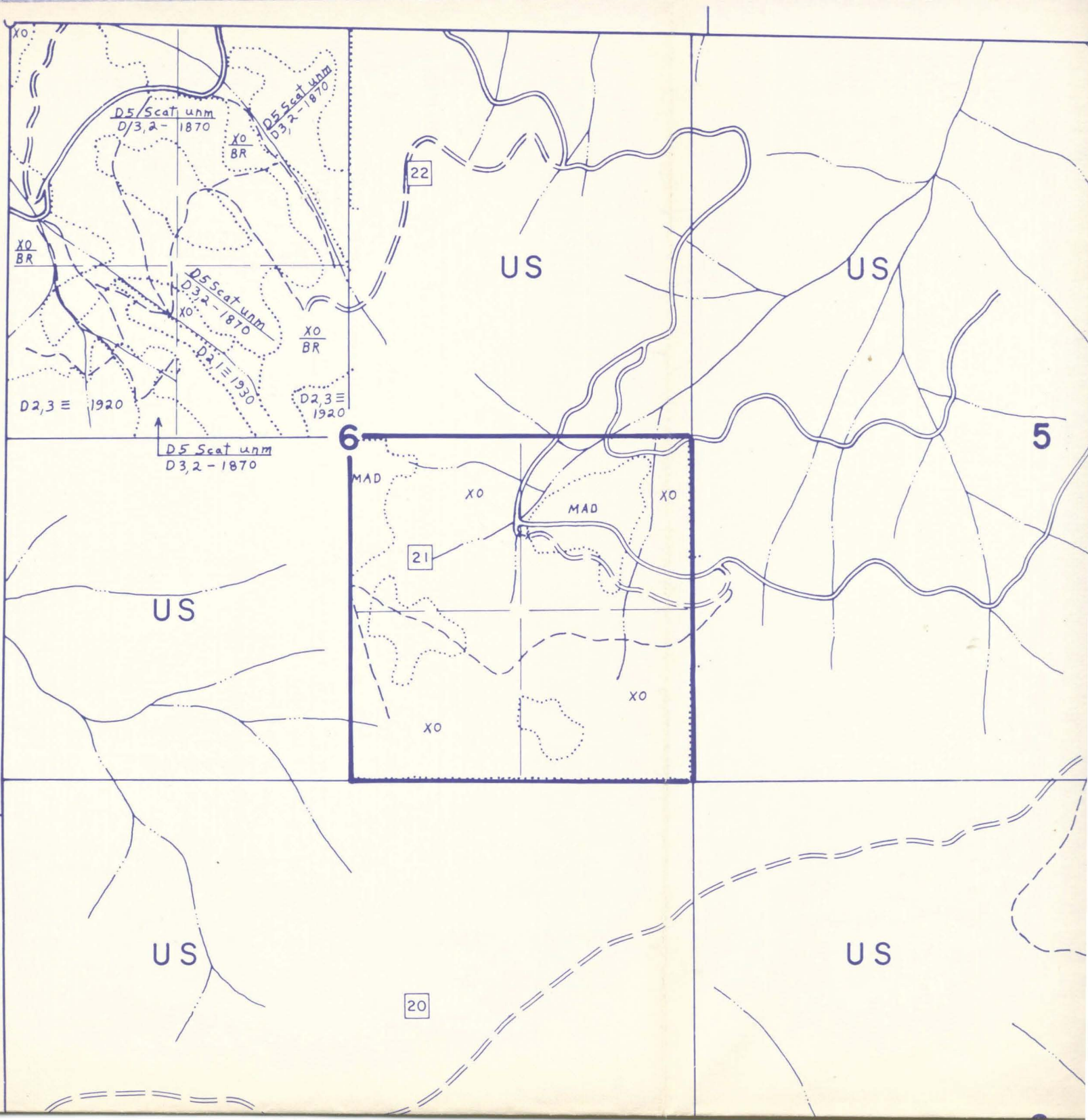
D23=1900

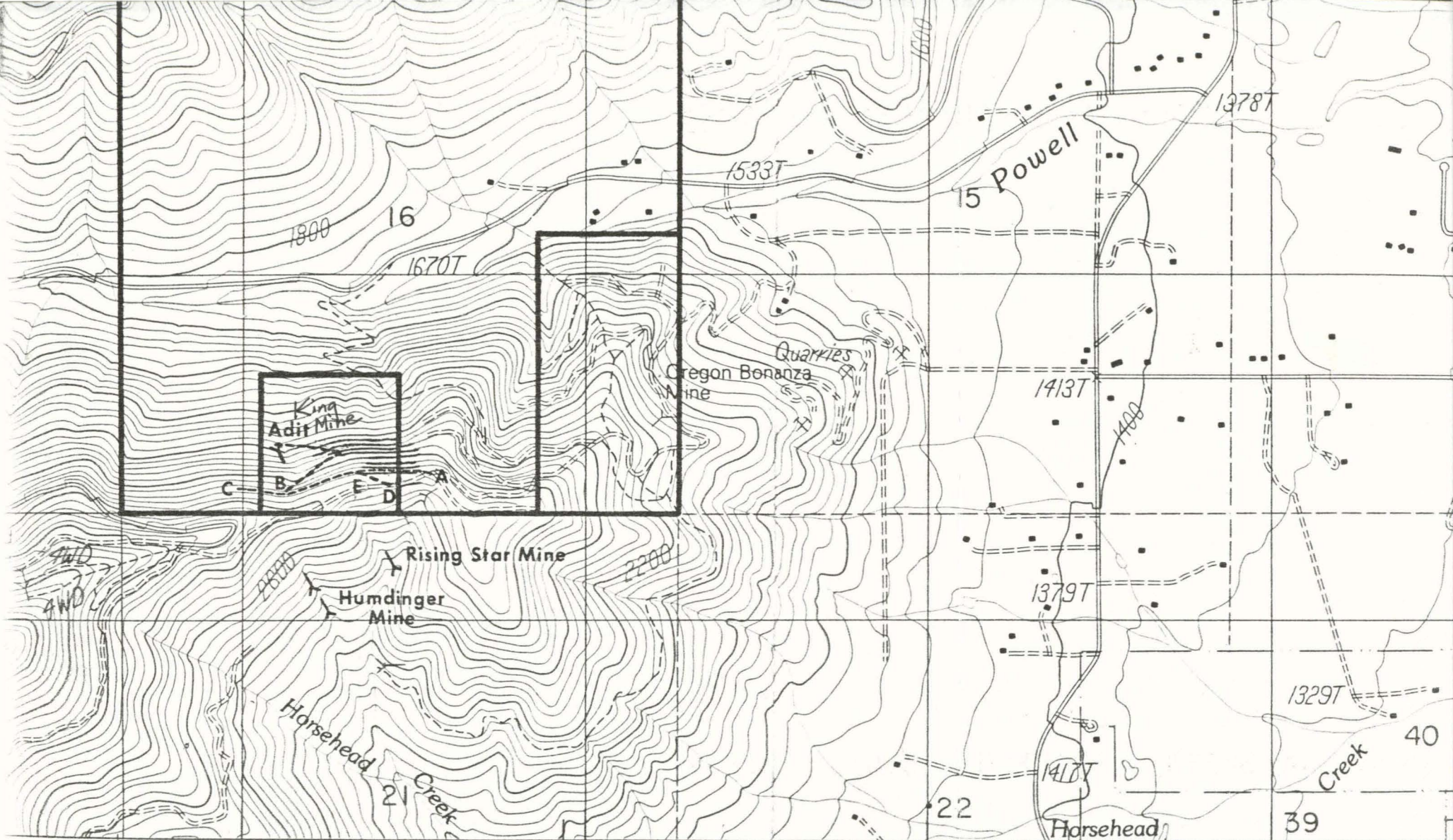
US

23

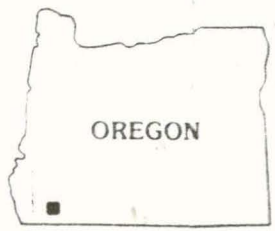
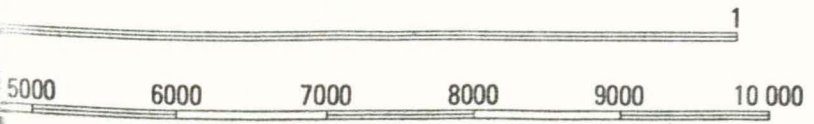
Camp

Meetin





475 17' 30" 477 478
 INTERIOR—GEOLOGICAL SURVEY, RESTON, VIRGINIA—1986



QUADRANGLE LOCATION

ROAD LEGEND

- Improved Road.....
- Unimproved Road.....
- Trail.....
- Interstate Route.....
- U.S. Route.....

VAL 40 FEET
 IR INTERVAL 90 FEET

1	2	3	1 Wilderville
			2 Grants Pass