

Oscar Creek Mine

Grants Pass Courier, January 27, 1937

\$26,000 SPENT IN YEAR'S RUN AT OSCAR CREEK

A somewhat different type of placer operation is found in the dry land dredge at the Oscar Creek mine, between Murphy and Provolt, owned and operated by A. M. Sturtevant and E. B. Bishop.

The equipment consists of one one and one-quarter yard Marion electric shovel, a 5 by 24 foot screen, stacking conveyor 55 feet in length and an automatic feeder 24 feet in length. The plant is operated by electric power and can be easily moved from one place to another on its own power.

Taking a 150-foot swath, the plant is capable of a run of 75 yards an hour, operating day and night. Large floodlights are installed for night operation. It is planned to operate either two or three shifts a day, employing six to ten men. Four men will be used on a shift if the mine runs only two shifts a day of ten hours each, three men if three shifts a day.

Less water is required for this type of placer mining than in the hydraulic method. The water that is required comes from the natural watershed of the district. About 1000 to 1200 gallons of water a minute are used in running the plant.

The equipment has been in its present location at the Oscar Creek mine about one year, most of the work being merely development operations and test runs. The two operators are now prepared to proceed at high speed and expect to take out considerable gold with the present set-up. Indications are that several years work lies ahead without moving far from the present location.

A large item in overhead in dry land dredging of this character is electric power to operate the machinery and flood lights. The power is purchased from the California Oregon Power company. The plant is designed, however, to handle a large amount of material with great speed.

During the year of operation the owners have spent \$4000 for labor, \$5000 for supplies, \$2000 for freight shipments (rail and truck lines) and \$15,000 for machinery, making a total expenditure of approximately \$26,000.

The above photograph, looking down into the cut, shows a view of the plant from the bank. The office, tool shed and shop, not shown in the pictures, are on top of the bank and some little distance back among a growth of trees.

Mr. Bishop was formerly a contractor and Mr. Sturtevant has followed mining for some years. Both are comparative newcomers to Grants Pass.

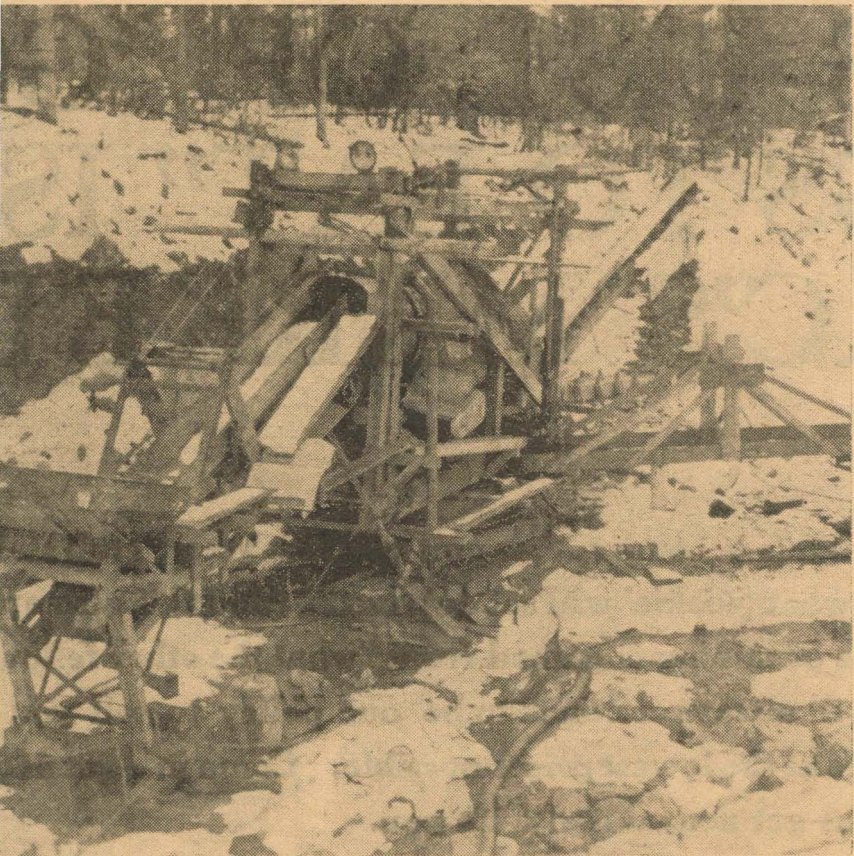
Several other operators have worked the Oscar Creek mine in past years although prior to the present development there was no major operation there since the Bolton Brothers worked it with heavy equipment about three years ago. Their equipment included a large steam shovel and plant somewhat similar to that now on the site. The operation continued for about a year.

Between major operations various individuals have taken gold from the property in small quantities.

JAN 27 1937

GRANTS PASS, OREGON, DAILY COURIER

Here Gives Practic



View of "dry land dredge" at Oscar Creek mine, operated by Sturtevant and Bishop, showing feeder which carries material excavated by Marion electric shovel to revolving screens which sort it before it passes over gold saving devices.