

blow going
Mining World
March 1941
PX-26-89, 1AP1, 1276M

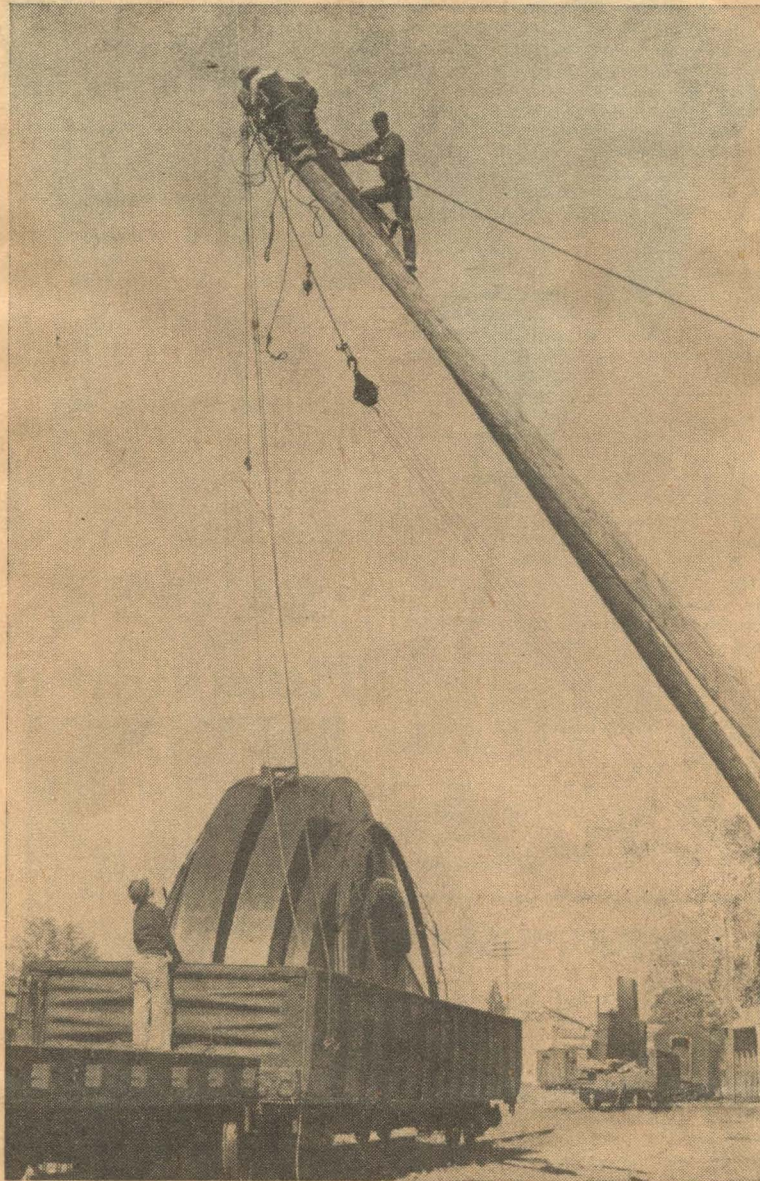
Mining Journal
June 12 1940

FLUMMER

ATLAS DREDGE

Clipping from the Grants Pass Courier, May 3rd, 1940

Heavy Mining Proposed —



Dragline dredge equipment of such size that seven or eight freight cars are required to bring it here from the Merriam Manufacturing company in Ohio was being shifted to a truck at the local yards Friday morning to be taken to Althouse creek, near Holland, for operations by the Atlas gold dredgers. Pictured here are two pieces for the pontoon, together weighing 28 tons. Yet to arrive are the Diesel-electric engine, 100-foot boom, five-yard bucket, cab, and other equipment which will bring the total weight to about 170 tons. The new machinery will replace a link belt dragline that the company has used on Althouse creek since setting up operations there several months ago. (Courier Photo and Engraving.)

of Courier May 31

of the new construction
of the creek to make it
more productive gold mine

of the bank of creek
which will be done this year

the dredge of the company

of the dredge of the company

Mining Journal
June 15, 1940

A new walker-type five-yard Marion dragline, Diesel-electrically operated, is being installed by the **Atlas Gold Dredging Company** on Althouse Creek near Holland, Oregon. The equipment already in use on the ground includes a 200-yard per hour Bodinson dragline dredge and Link-Belt dragline, each equipped with 2½-yard Esco buckets. This equipment was moved from the company's California operations last year. H. J. Ackley, 309 West A Street, Grants Pass, is superintendent. The property, formerly operated by the Von der Hellen interests, is known as the Leonard mine. Frank E. Ford, Edison Building, Los Angeles, is president and general manager.

G.P. Courier Mar 22, 1941

Dredge Equipment Shipped South

Dragline equipment, used by the Atlas Dredging corporations, in operations the past year near Holland was being loaded this week on two flatcars for shipment to Sacramento, Calif. The Atlas corporation has been one of Josephine county's largest operators.

see also. G.P. Bulletin Mar. 28, 1941