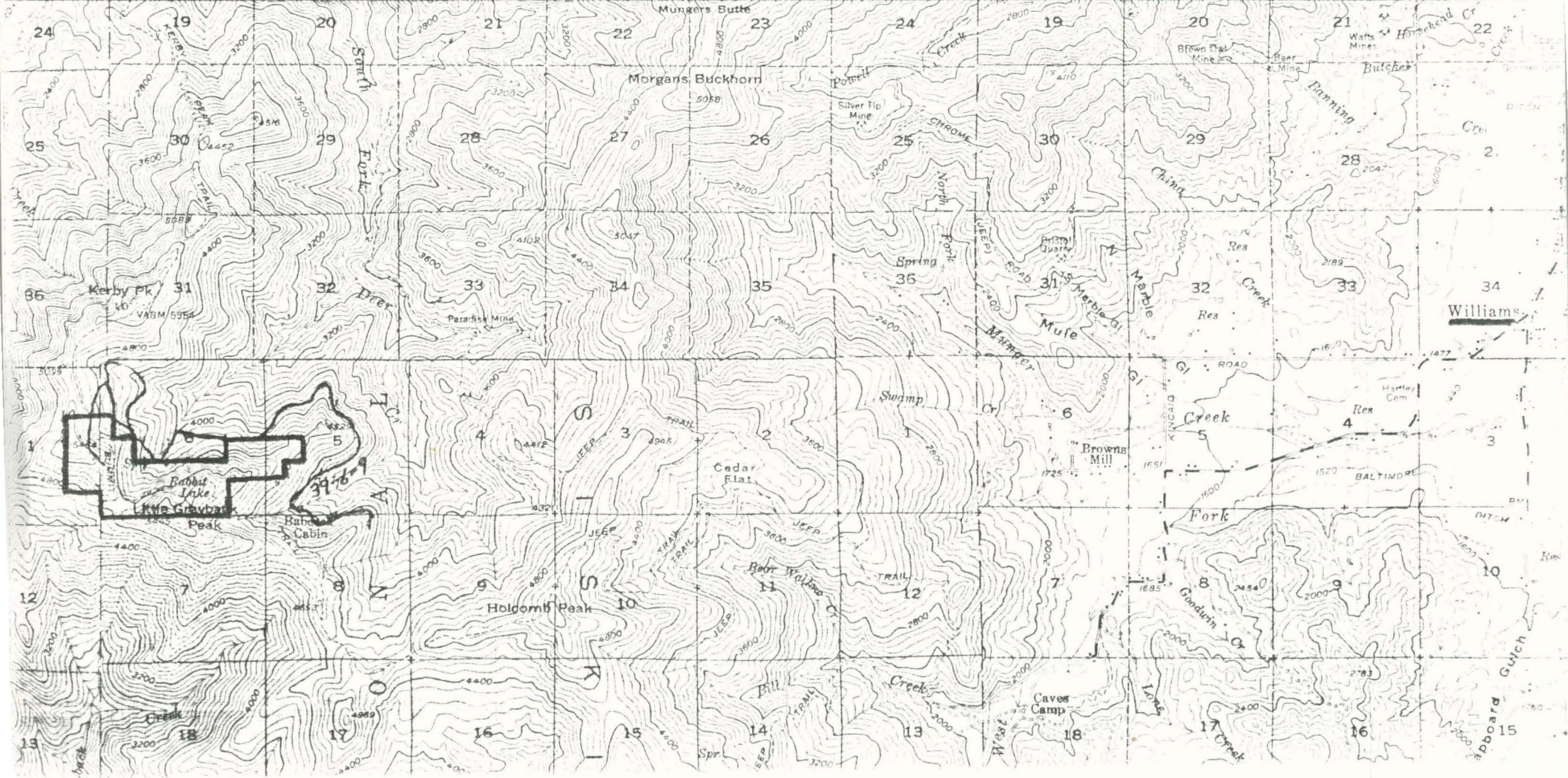
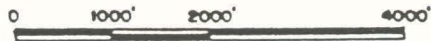
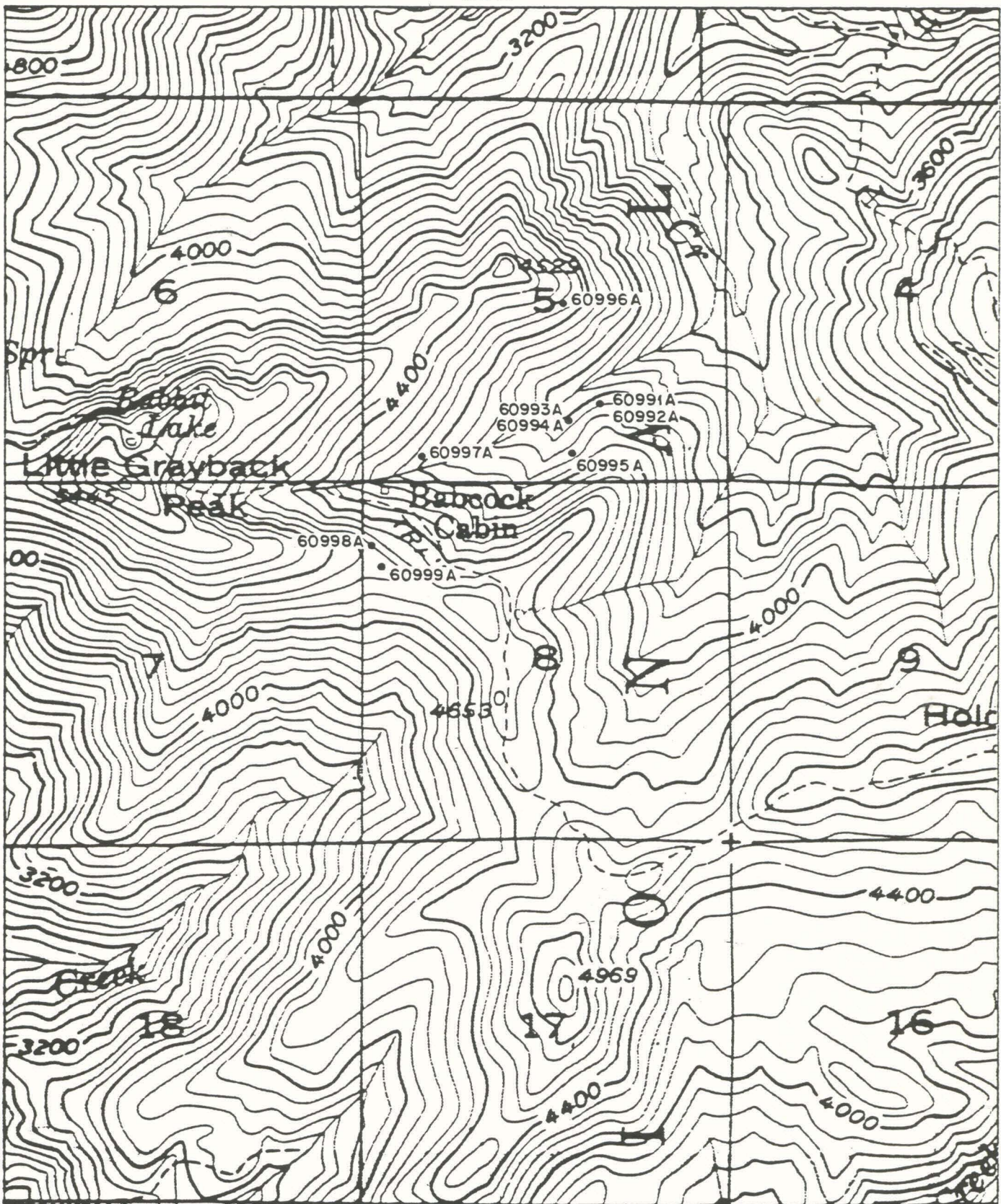


# Brewer Spruce RNA

DRYDEN 4.9 MI. 462 SELMA (U.S. 1991) 11 MI. 465 25' 466 R. 6 W. 467 468 1368 IV (GRANTS PASS) 470 471 472 20' 473 474 R 5 W 3.8 MI. TO OREG. 239

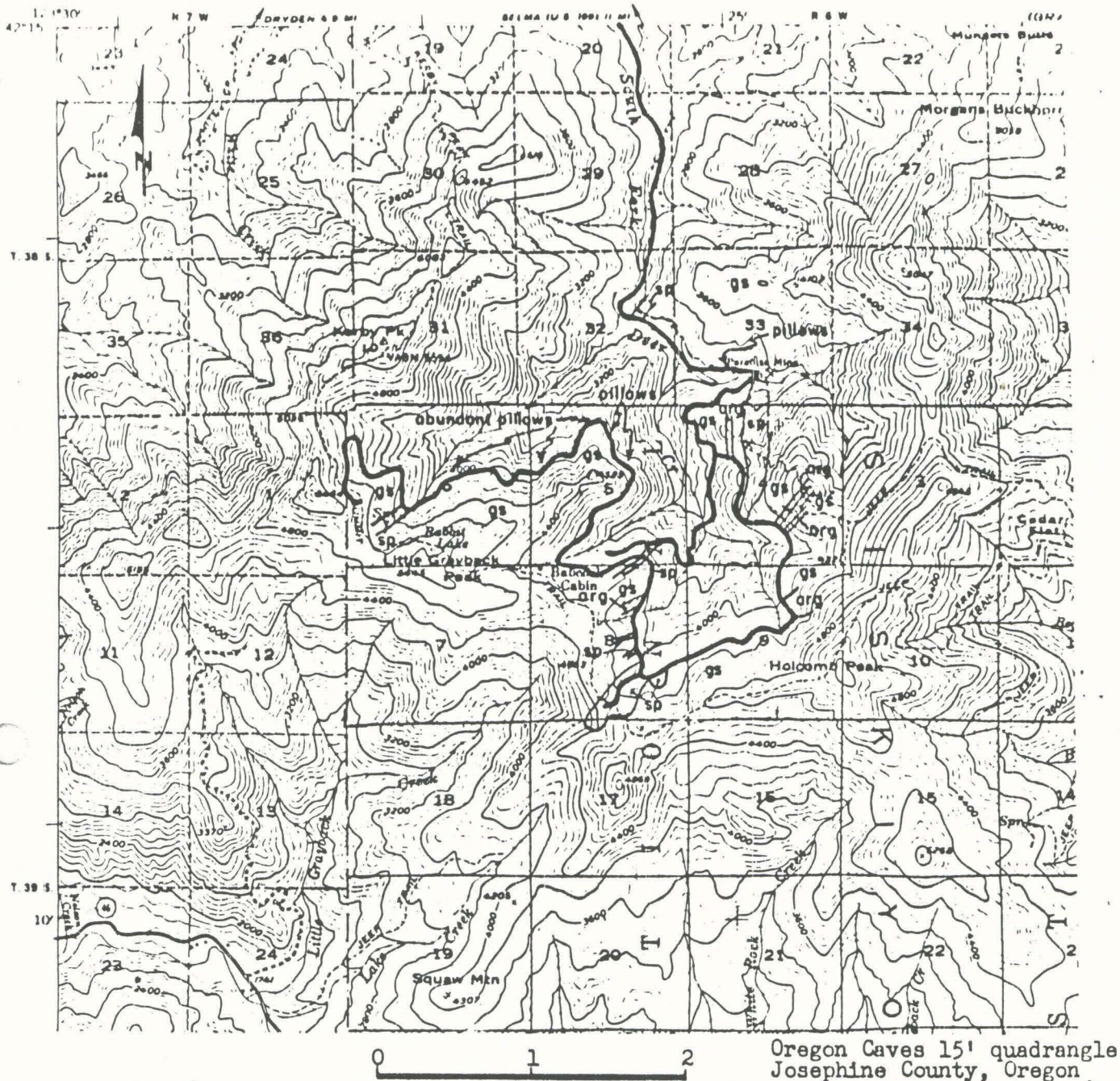




SCALE

SOURCE: Topo Base from Oregon Cove Quad., Oregon

COMINCO AMERICAN INCORPORATED			
COMPILED BY	MAH	DRAFTED BY	SKM
REVISED	DATE	REVISED	DATE
BABCOCK PROSPECT			SAMPLE LOCATION MAP
JOSEPHINE CO., OREGON			
SCALE: 1" = 2000 FEET	DATE: 7-31-81	FILE NO:	FIGURE:



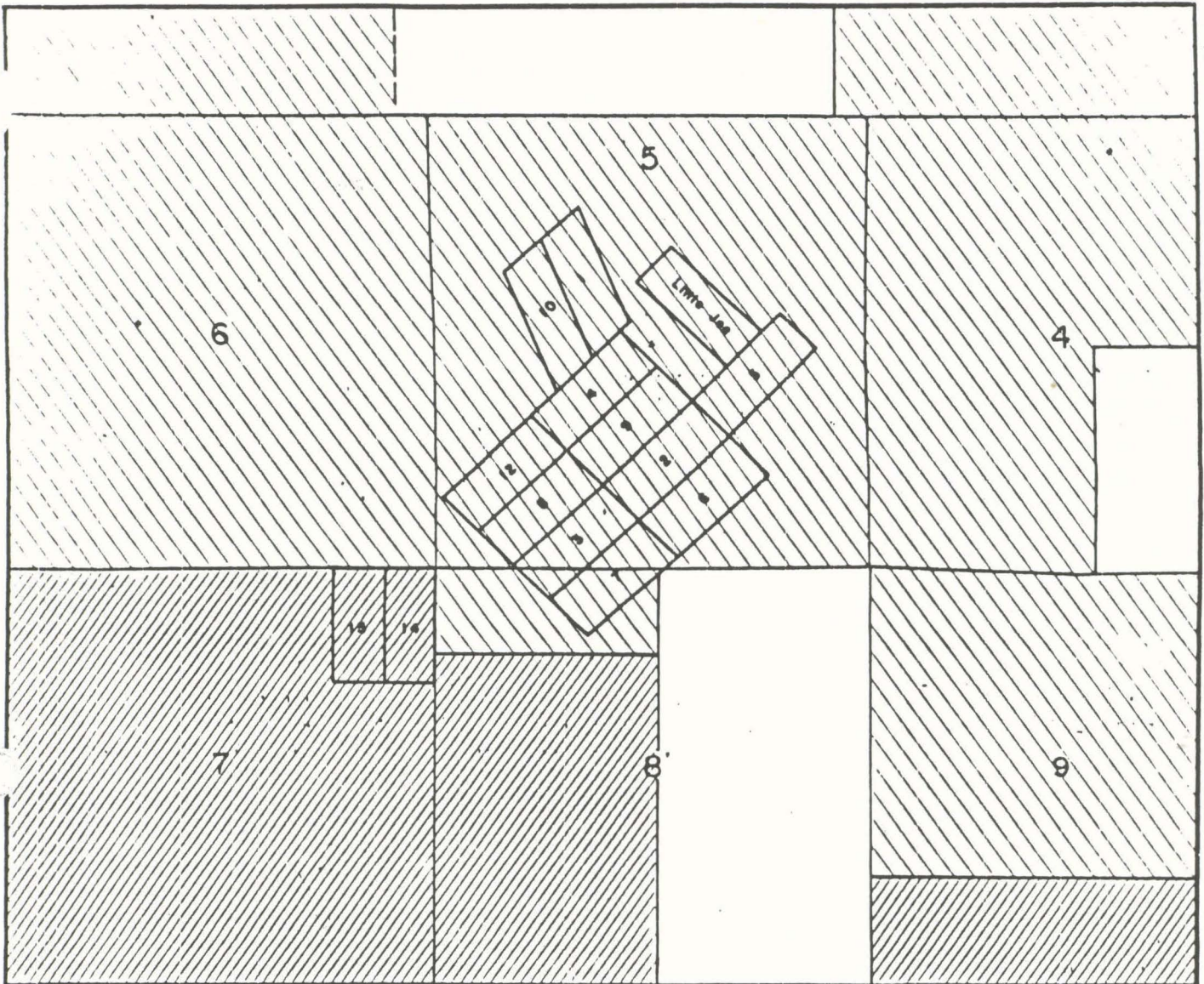
Oregon Caves 15' quadrangle  
Josephine County, Oregon

- sp Serpentinite, highly sheared and occupies zones of faulting
- arg Triassic Applegate Group black slaty shale and argillite
- gs Triassic Applegate Group greenstone and metapillow basalt





Figure 1. Location and general roadside geology - Babcock prospect.

R. 6 W.

T. 38  
S.



E X P L A N A T I O N

-  Joint ownership claims of Glenn Young and Fred Krauss
-  Siskiyou National Forest
-  Bureau of Land Management
-  Private Ownership

0 2000 4000 FEET

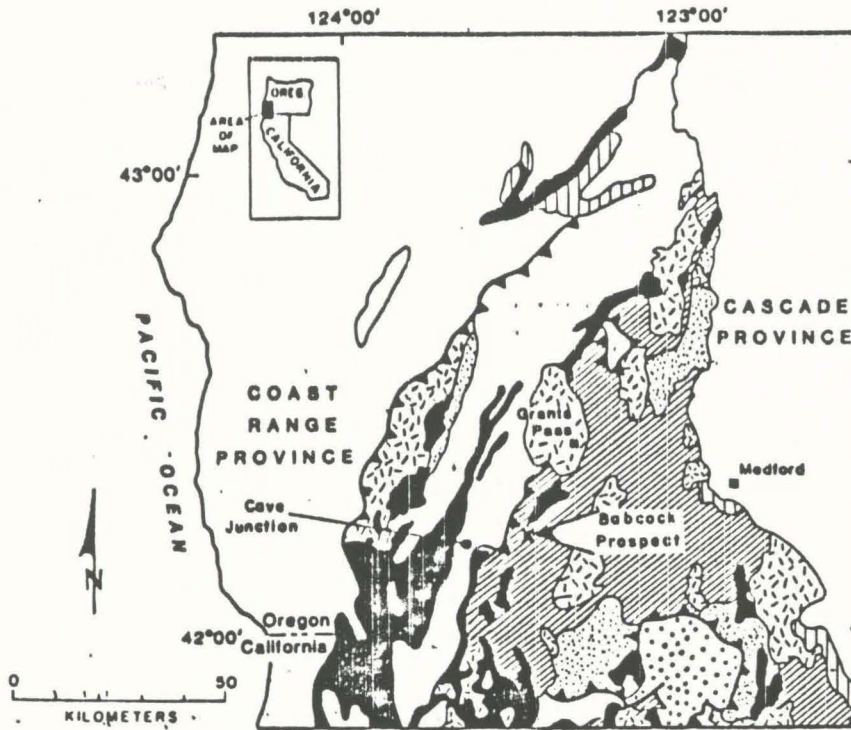
SCALE 1:24000

union  
MOLYCORP

Figure 2.

**BABCOCK PROSPECT**  
JOSEPHINE COUNTY, OREGON  
Claim and Land Status Map

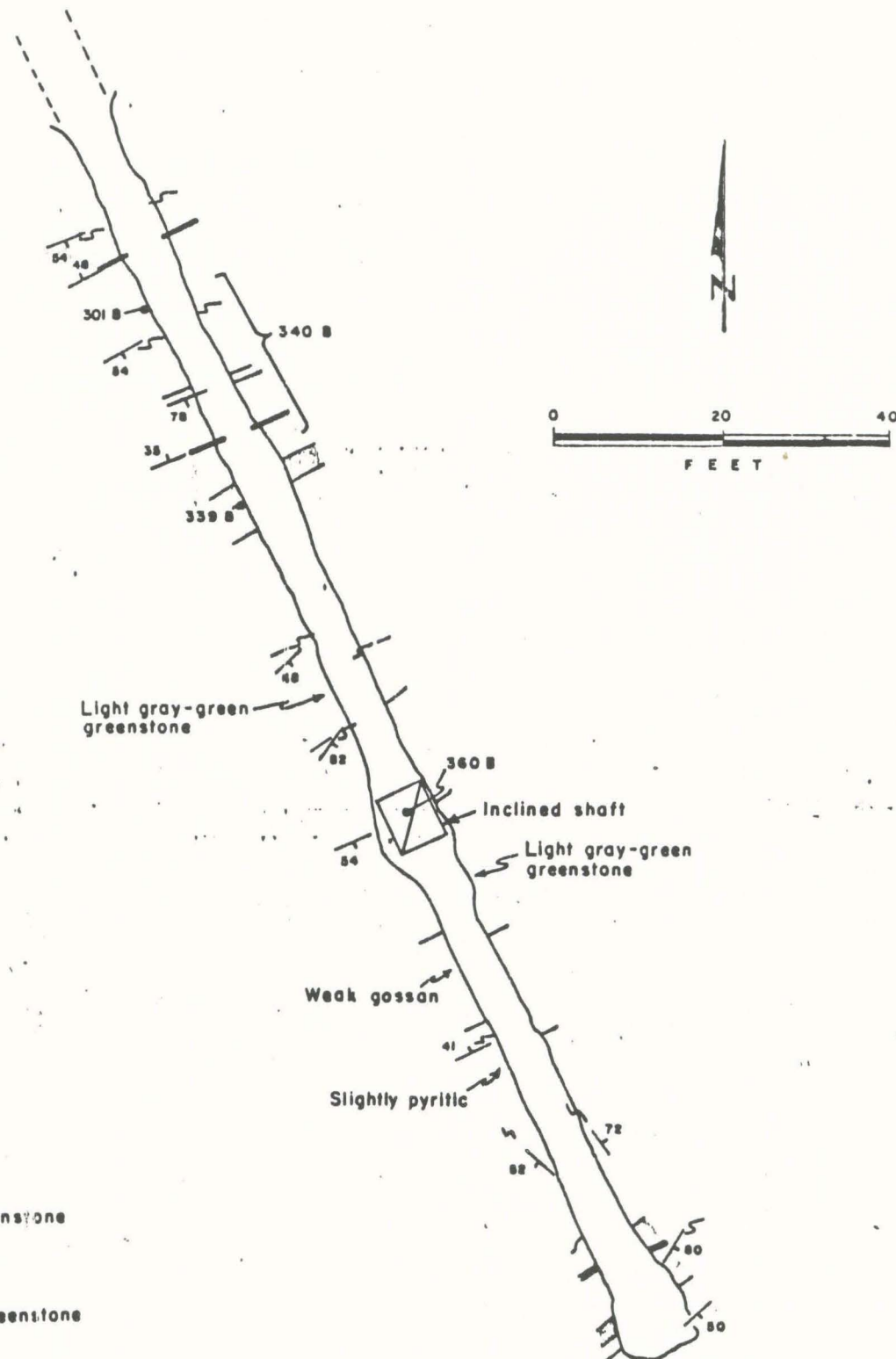
MLB/RCD/1982



EXPLANATION

- Marine clastic sedimentary rocks (Cretaceous)
- Condrey Mountain Schist (Upper Jurassic)
- Western Jurassic belt -- Marine clastic sedimentary, volcanic, and metavolcanic rocks (Jurassic)
- Granitic and gabbroic rocks (Jurassic or older)
- Ultramafic rocks (Jurassic or older)
- Western Paleozoic and Triassic belt -- Metasedimentary and metavolcanic rocks (Paleozoic and Triassic)
- Amphibolite and schist (mainly Paleozoic and Triassic)
- Thrust fault  
 Upper plate

Figure 3. Babcock prospect location and its relationship to the general geology of the Klamath Mountain Range.



- Siliceous greenstone
- Greenstone
- Gossanous greenstone
- Fault breccia
- >10% pyrite
- Quartz
- — — Fault
- ~ ~ ~ Shear zone

Figure 4.

## BABCOCK PROSPECT

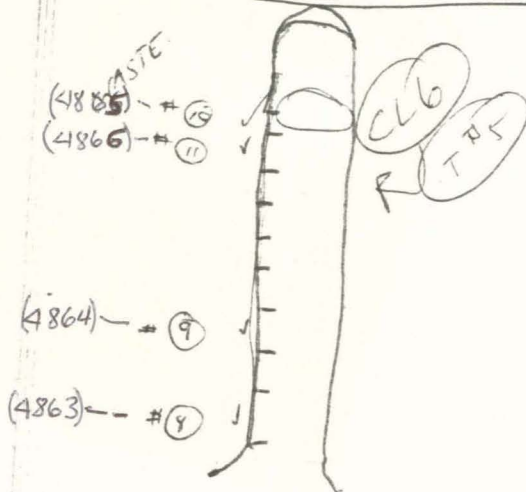
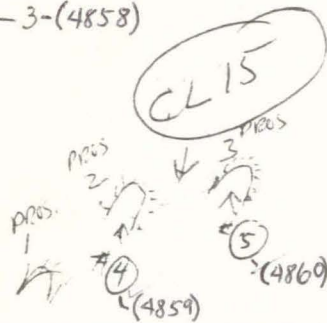
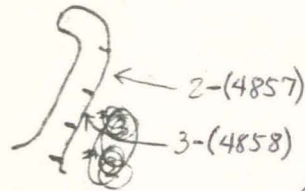
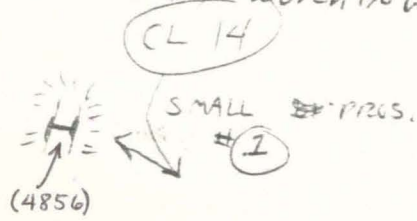
JOSEPHINE COUNTY, OREGON

### Adit #5 Geology

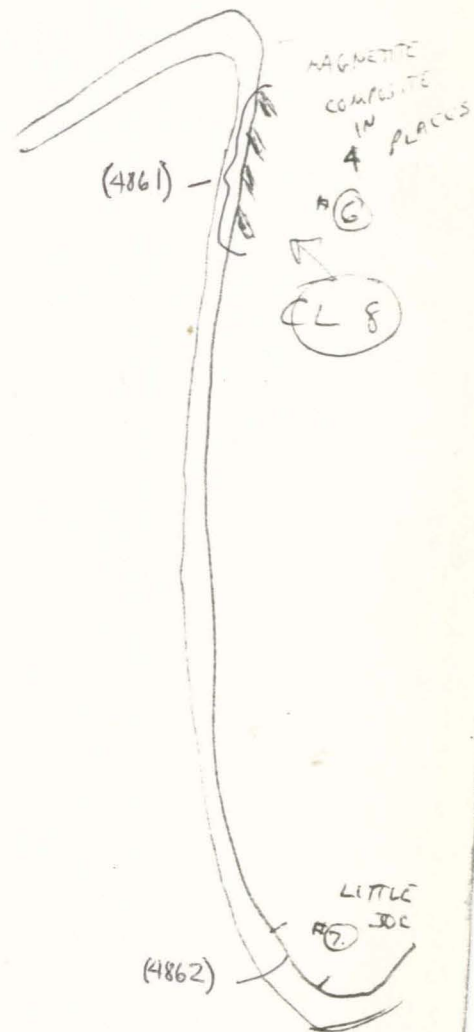
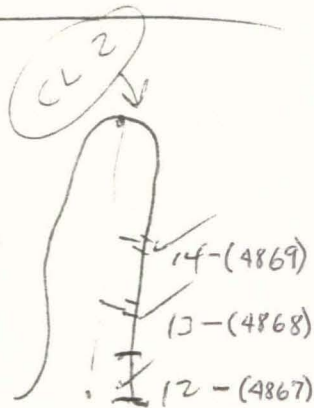
MLB/AA/RCD/1982-83

Babcock Cabin area

UPPER MOST WORKINGS



ROAD



# BABCOCK CABIN PROS.

