

(East)

#5919-R
PLAINTIFF'S EX. A
EX. A

Big Jasper Group Nos. 1-2-3-4-5
Cub Bear Nos. 1-2
Cougar.

#6379-E

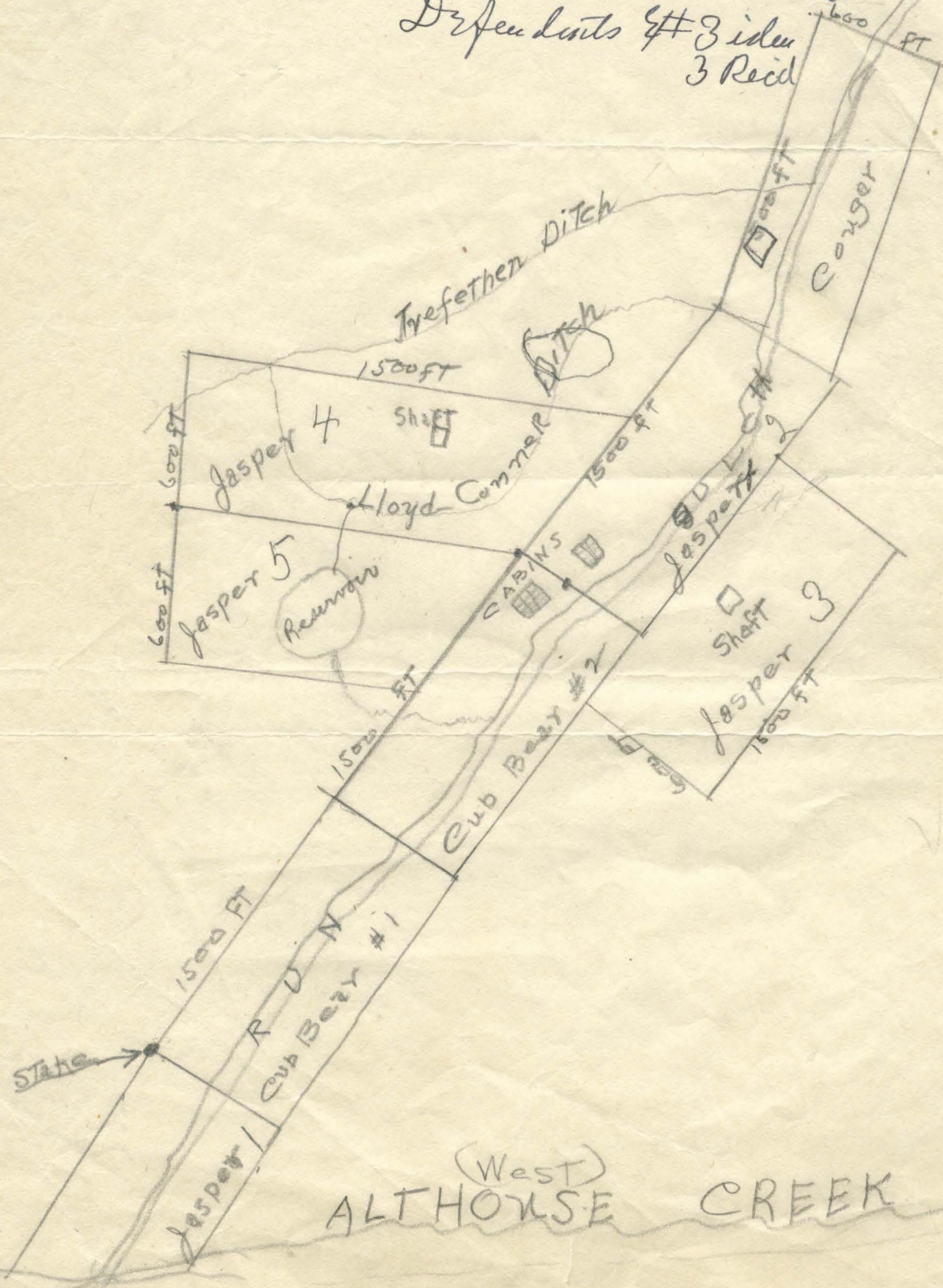
DEFENDANT'S EX. B IS.
EX. B REG.

#6694-L

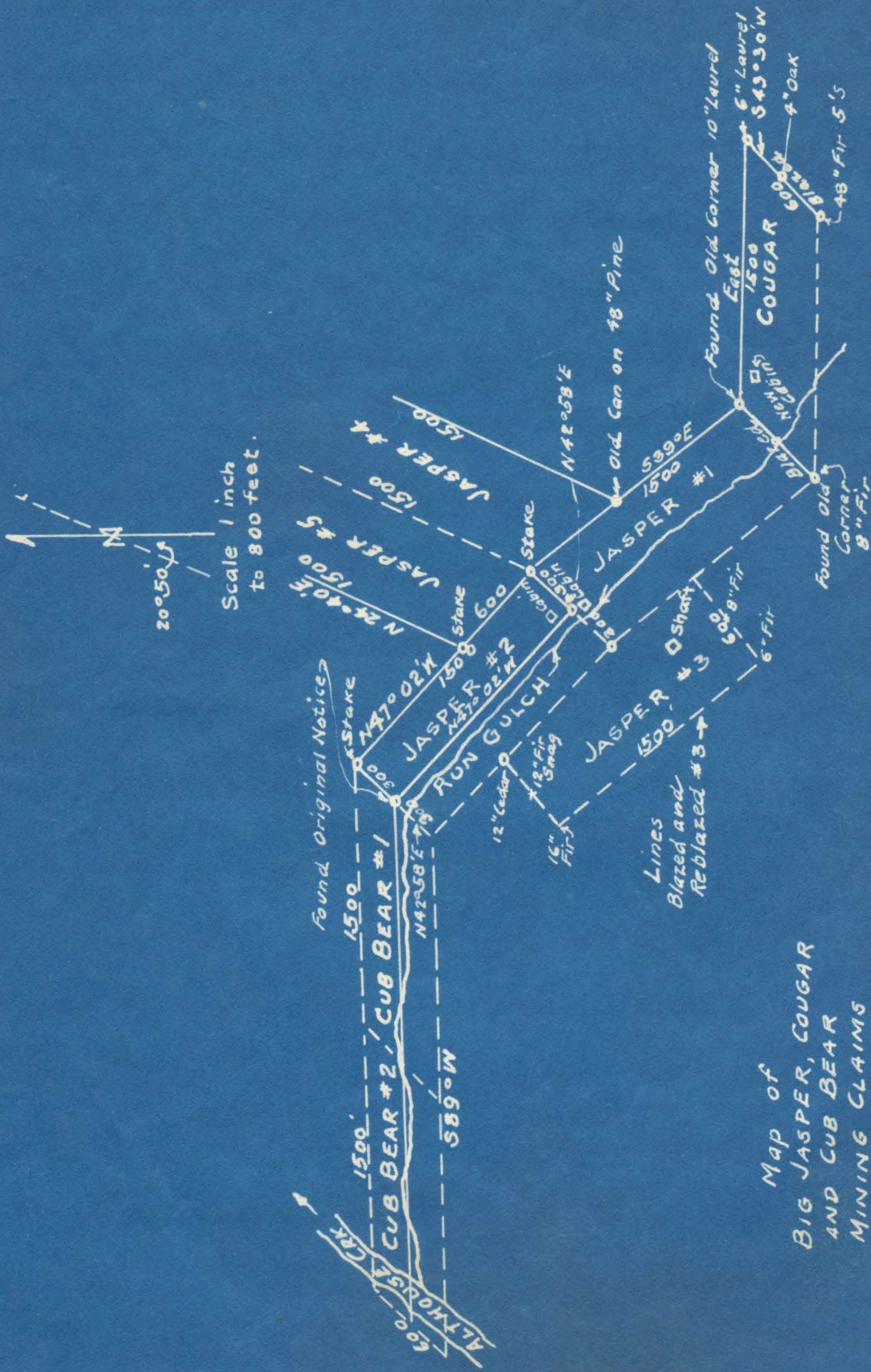
Defendants #3 iden
3 Recd

(North)

(South)



(West)
ALTHOUSE CREEK



Scale 1 inch
to 800 feet.

20°50'

Map of
BIG JASPER, COUGAR
AND CUB BEAR
MINING CLAIMS

As shown by Surveys made in
Apr. & Sept., 1939 by H.D. Powell-Eng'r.
RUN GULCH, ALTHOUSE DISTRICT,
JOSEPHINE COUNTY, OREGON.